

---

## Hazus: Earthquake Global Risk Report

---

**Region Name:** CalavCNCCCSCE

**Earthquake Scenario:** calaverascnccscsha\_m7p43\_se

**Print Date:** May 20, 2024

**Disclaimer:**

*Totals only reflect data for those census tracts/blocks included in the user's study region.*

*The estimates of social and economic impacts contained in this report were produced using Hazus loss estimation methodology software which is based on current scientific and engineering knowledge. There are uncertainties inherent in any loss estimation technique. Therefore, there may be significant differences between the modeled results contained in this report and the actual social and economic losses following a specific earthquake. These results can be improved by using enhanced inventory, geotechnical, and observed ground motion data.*

## Table of Contents

<b>Section</b>	<b>Page #</b>
<b>General Description of the Region</b>	<b>3</b>
<b>Building and Lifeline Inventory</b>	<b>4</b>
Building Inventory	
Critical Facility Inventory	
Transportation and Utility Lifeline Inventory	
<b>Earthquake Scenario Parameters</b>	<b>7</b>
<b>Direct Earthquake Damage</b>	<b>8</b>
Buildings Damage	
Essential Facilities Damage	
Transportation and Utility Lifeline Damage	
<b>Induced Earthquake Damage</b>	<b>14</b>
Fire Following Earthquake	
Debris Generation	
<b>Social Impact</b>	<b>15</b>
Shelter Requirements	
Casualties	
<b>Economic Loss</b>	<b>17</b>
Building Related Losses	
Transportation and Utility Lifeline Losses	
<b>Appendix A: County Listing for the Region</b>	
<b>Appendix B: Regional Population and Building Value Data</b>	

## General Description of the Region

Hazus-MH is a regional earthquake loss estimation model that was developed by the Federal Emergency Management Agency (FEMA) and the National Institute of Building Sciences. The primary purpose of Hazus is to provide a methodology and software application to develop multi-hazard losses at a regional scale. These loss estimates would be used primarily by local, state and regional officials to plan and stimulate efforts to reduce risks from multi-hazards and to prepare for emergency response and recovery.

The earthquake loss estimates provided in this report was based on a region that includes 39 county(ies) from the following state(s):

California

Note:

Appendix A contains a complete listing of the counties contained in the region.

The geographical size of the region is 68,457.81 square miles and contains 3,891 census tracts. There are over 5,831 thousand households in the region which has a total population of 16,846,162 people. The distribution of population by Total Region and County is provided in Appendix B.

There are an estimated 5,230 thousand buildings in the region with a total building replacement value (excluding contents) of (millions of dollars). Approximately 90.00 % of the buildings (and % of the building value) are associated with residential housing.

The replacement value of the transportation and utility lifeline systems is estimated to be 270,014 and 217,136 (millions of dollars) , respectively.

## Building and Lifeline Inventory

### Building Inventory

Hazus estimates that there are 5,230 thousand buildings in the region which have an aggregate total replacement value of (millions of dollars) . Appendix B provides a general distribution of the building value by Total Region and County.

In terms of building construction types found in the region, wood frame construction makes up 86% of the building inventory. The remaining percentage is distributed between the other general building types.

### Critical Facility Inventory

Hazus breaks critical facilities into two (2) groups: essential facilities and high potential loss facilities (HPL). Essential facilities include hospitals, medical clinics, schools, fire stations, police stations and emergency operations facilities. High potential loss facilities include dams, levees, military installations, nuclear power plants and hazardous material sites.

For essential facilities, there are 288 hospitals in the region with a total bed capacity of 43,687 beds. There are 6,267 schools, 1,670 fire stations, 570 police stations and 98 emergency operation facilities. With respect to high potential loss facilities (HPL), there are no dams identified within the inventory. The inventory also includes no hazardous material sites, no military installations and no nuclear power plants.

### Transportation and Utility Lifeline Inventory

Within Hazus, the lifeline inventory is divided between transportation and utility lifeline systems. There are seven (7) transportation systems that include highways, railways, light rail, bus, ports, ferry and airports. There are six (6) utility systems that include potable water, wastewater, natural gas, crude & refined oil, electric power and communications. The lifeline inventory data are provided in Tables 1 and 2.

The total value of the lifeline inventory is over 487,150.00 (millions of dollars). This inventory includes over 12,612.59 miles of highways, 13,345 bridges, 289,950.35 miles of pipes.

**Table 1: Transportation System Lifeline Inventory**

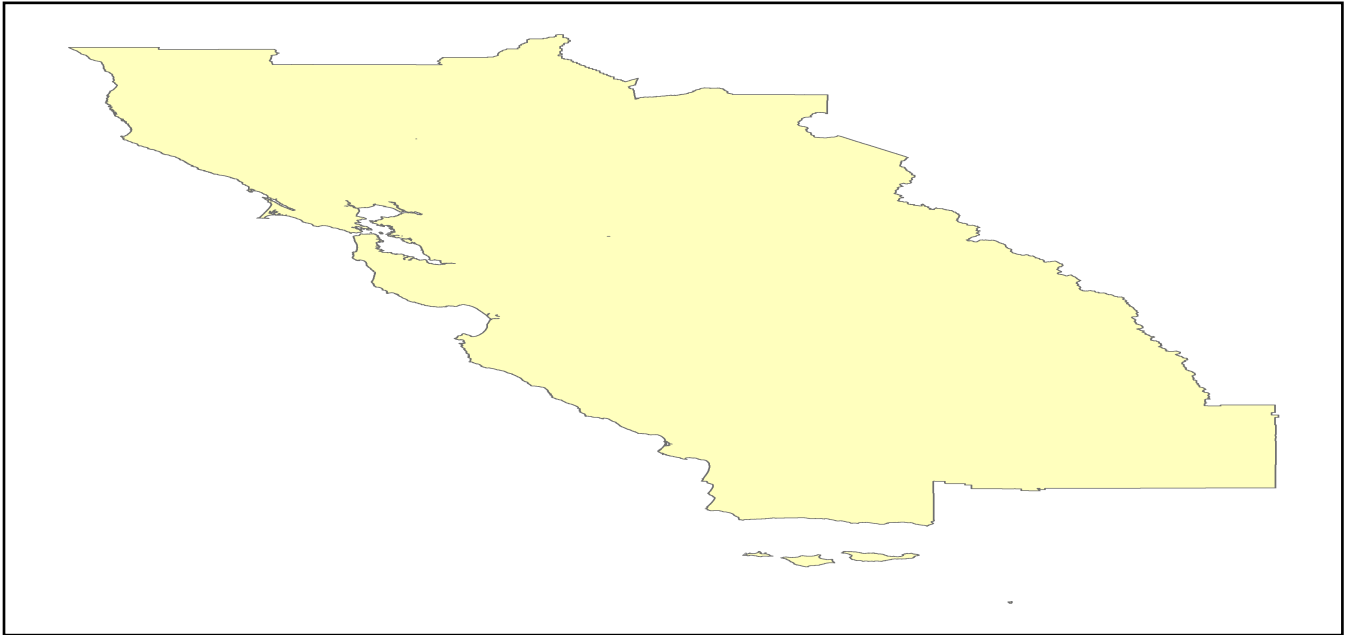
System	Component	# Locations/ # Segments	Replacement value (millions of dollars)
<b>Highway</b>	Bridges	13,345	62853.6251
	Segments	8,126	108549.9650
	Tunnels	52	1011.6097
	<b>Subtotal</b>		<b>172415.1998</b>
<b>Railways</b>	Bridges	2,042	11618.9800
	Facilities	101	268.9630
	Segments	3,549	69510.7967
	Tunnels	3	1.8495
	<b>Subtotal</b>		<b>81400.5892</b>
<b>Light Rail</b>	Bridges	112	15.3529
	Facilities	255	4154.0000
	Segments	15	5403.2756
	Tunnels	0	0.0000
	<b>Subtotal</b>		<b>9572.6285</b>
<b>Bus</b>	Facilities	61	137.0192
	<b>Subtotal</b>		<b>137.0192</b>
<b>Ferry</b>	Facilities	28	37.2680
	<b>Subtotal</b>		<b>37.2680</b>
<b>Port</b>	Facilities	379	1444.6891
	<b>Subtotal</b>		<b>1444.6891</b>
<b>Airport</b>	Facilities	139	3077.9753
	Runways	200	1929.4731
	<b>Subtotal</b>		<b>5007.4484</b>
		<b>Total</b>	<b>270,014.80</b>

**Table 2: Utility System Lifeline Inventory**

System	Component	# Locations / Segments	Replacement value (millions of dollars)
<b>Potable Water</b>	Distribution Lines	NA	5761.2154
	Facilities	28	1100.2320
	Pipelines	0	0.0000
		<b>Subtotal</b>	<b>6861.4474</b>
<b>Waste Water</b>	Distribution Lines	NA	3456.7293
	Facilities	204	35078.1672
	Pipelines	0	0.0000
		<b>Subtotal</b>	<b>38534.8965</b>
<b>Natural Gas</b>	Distribution Lines	NA	2304.4862
	Facilities	19	746.9647
	Pipelines	1,107	20194.4985
		<b>Subtotal</b>	<b>23245.9494</b>
<b>Oil Systems</b>	Facilities	35	4.1300
	Pipelines	0	0.0000
		<b>Subtotal</b>	<b>4.1300</b>
<b>Electrical Power</b>	Facilities	566	148421.6218
		<b>Subtotal</b>	<b>148421.6218</b>
<b>Communication</b>	Facilities	582	68.6760
		<b>Subtotal</b>	<b>68.6760</b>
	<b>Total</b>		<b>217,136.70</b>

## Earthquake Scenario

Hazus uses the following set of information to define the earthquake parameters used for the earthquake loss estimate provided in this report.



<b>Scenario Name</b>	calaverascnccccsesha_m7p43_se
<b>Type of Earthquake</b>	User-defined
<b>Fault Name</b>	NA
<b>Historical Epicenter ID #</b>	NA
<b>Probabilistic Return Period</b>	NA
<b>Longitude of Epicenter</b>	NA
<b>Latitude of Epicenter</b>	NA
<b>Earthquake Magnitude</b>	7.43
<b>Depth (km)</b>	NA
<b>Rupture Length (Km)</b>	NA
<b>Rupture Orientation (degrees)</b>	NA
<b>Attenuation Function</b>	NA

## Direct Earthquake Damage

### Building Damage

Hazus estimates that about 120,768 buildings will be at least moderately damaged. This is over 2.00 % of the buildings in the region. There are an estimated 1,972 buildings that will be damaged beyond repair. The definition of the 'damage states' is provided in Volume 1: Chapter 5 of the Hazus technical manual. Table 3 below summarizes the expected damage by general occupancy for the buildings in the region. Table 4 below summarizes the expected damage by general building type.

### Damage Categories by General Occupancy Type

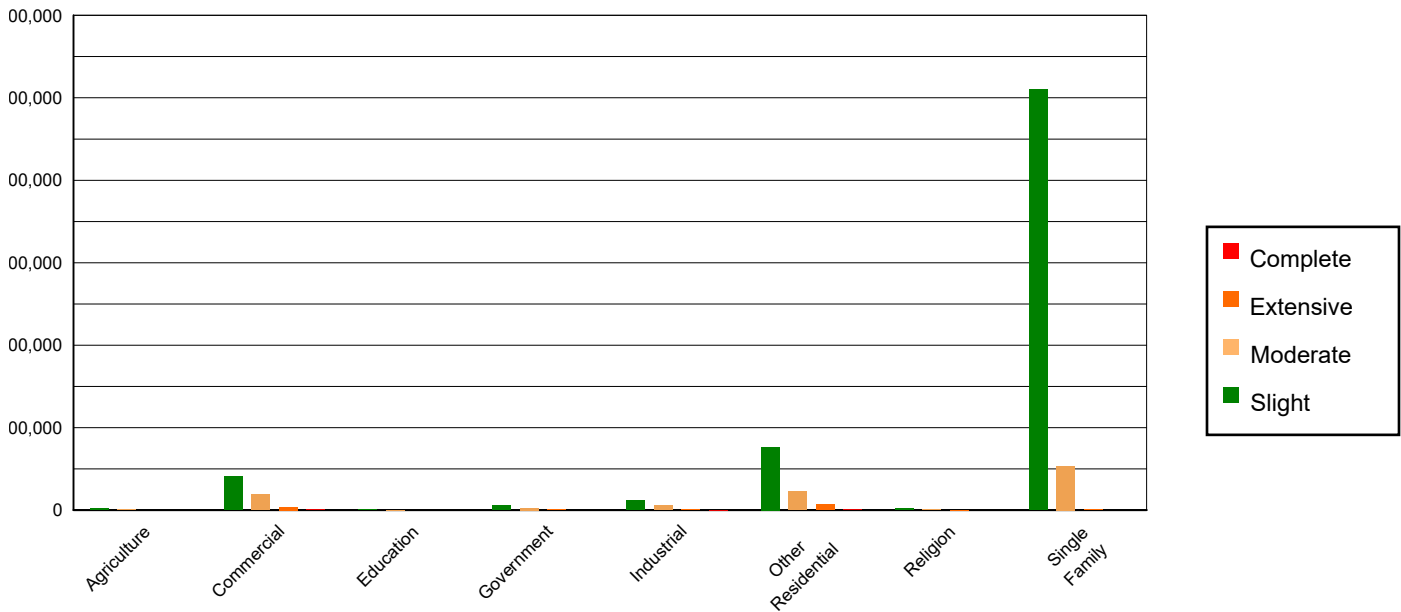


Table 3: Expected Building Damage by Occupancy

	None		Slight		Moderate		Extensive		Complete	
	Count	(%)	Count	(%)	Count	(%)	Count	(%)	Count	(%)
<b>Agriculture</b>	35281.40	0.79	1992.30	0.31	794.79	0.75	153.85	1.17	25.66	1.30
<b>Commercial</b>	271779.24	6.09	41120.03	6.33	18812.38	17.81	3913.05	29.75	748.30	37.94
<b>Education</b>	9295.50	0.21	856.68	0.13	282.59	0.27	57.31	0.44	11.92	0.60
<b>Government</b>	14810.50	0.33	5405.21	0.83	2621.96	2.48	448.91	3.41	56.42	2.86
<b>Industrial</b>	75192.46	1.69	11556.74	1.78	5517.01	5.22	1170.19	8.90	207.59	10.53
<b>Other Residential</b>	584173.83	13.10	76659.77	11.80	22959.99	21.73	6584.51	50.06	839.90	42.59
<b>Religion</b>	16916.67	0.38	2197.11	0.34	1081.79	1.02	250.23	1.90	47.20	2.39
<b>Single Family</b>	3452483.13	77.41	510035.52	78.49	53573.04	50.71	575.23	4.37	35.08	1.78
<b>Total</b>	<b>4,459,933</b>		<b>649,823</b>		<b>105,644</b>		<b>13,153</b>		<b>1,972</b>	

**Table 4: Expected Building Damage by Building Type (All Design Levels)**

	None		Slight		Moderate		Extensive		Complete	
	Count	(%)	Count	(%)	Count	(%)	Count	(%)	Count	(%)
<b>Wood</b>	3892566.98	87.28	570281.37	87.76	57936.22	54.84	526.78	4.00	21.10	1.07
<b>Steel</b>	90213.52	2.02	15669.90	2.41	11751.85	11.12	3040.77	23.12	541.07	27.44
<b>Concrete</b>	102295.37	2.29	19096.16	2.94	9228.01	8.74	2721.02	20.69	486.21	24.66
<b>Precast</b>	57749.29	1.29	9003.39	1.39	4885.44	4.62	488.17	3.71	38.31	1.94
<b>RM</b>	170576.25	3.82	17357.53	2.67	6860.65	6.49	492.94	3.75	8.01	0.41
<b>URM</b>	26350.26	0.59	11560.74	1.78	7058.45	6.68	1711.47	13.01	417.35	21.16
<b>MH</b>	120181.06	2.69	6854.26	1.05	7922.96	7.50	4172.13	31.72	460.01	23.33
<b>Total</b>	<b>4,459,933</b>		<b>649,823</b>		<b>105,644</b>		<b>13,153</b>		<b>1,972</b>	

\*Note:

- RM Reinforced Masonry
- URM Unreinforced Masonry
- MH Manufactured Housing

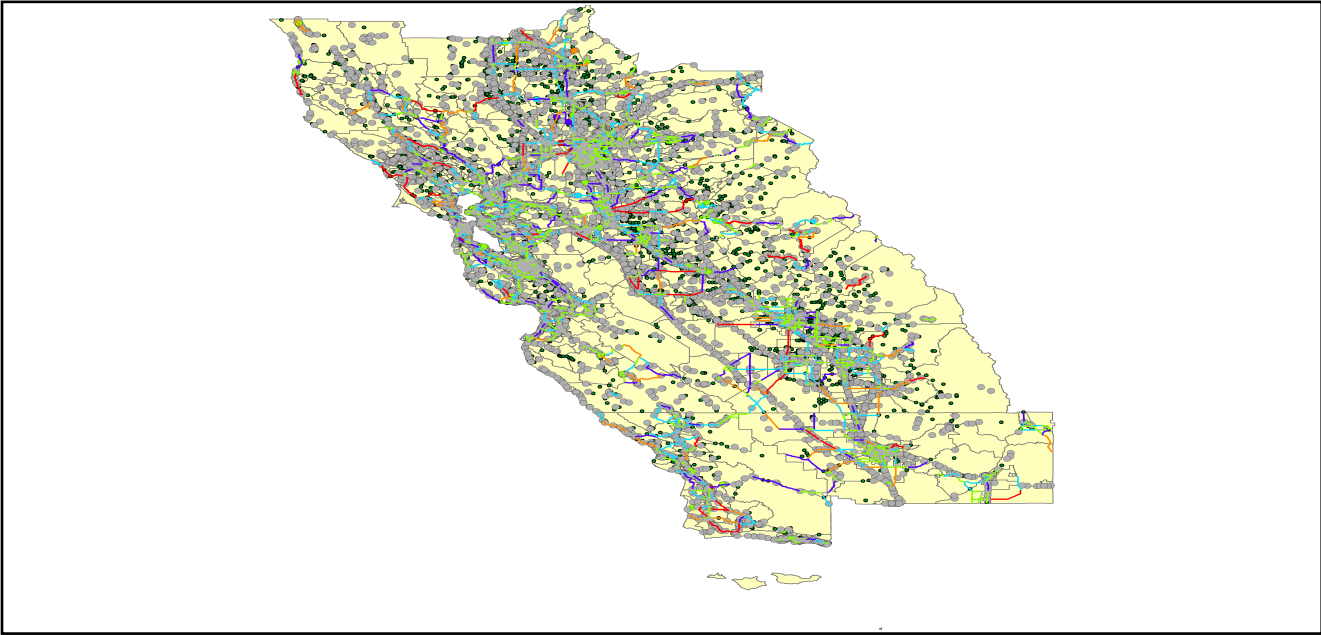
## Essential Facility Damage

Before the earthquake, the region had 43,687 hospital beds available for use. On the day of the earthquake, the model estimates that only 36,870 hospital beds (84.00%) are available for use by patients already in the hospital and those injured by the earthquake. After one week, 93.00% of the beds will be back in service. By 30 days, 99.00% will be operational.

**Table 5: Expected Damage to Essential Facilities**

Classification	Total	# Facilities		
		At Least Moderate Damage > 50%	Complete Damage > 50%	With Functionality > 50% on day 1
Hospitals	288	13	0	250
Schools	6,267	425	0	5,327
EOCs	98	5	0	88
PoliceStations	570	19	0	508
FireStations	1,670	50	0	1,537

Transportation Lifeline Damage



**Table 6: Expected Damage to the Transportation Systems**

System	Component	Number of Locations_				
		Locations/ Segments	With at Least Mod. Damage	With Complete Damage	With Functionality > 50 %	
					After Day 1	After Day 7
Highway	Segments	8,126	0	0	8,126	8,126
	Bridges	13,345	28	0	13,316	13,336
	Tunnels	52	0	0	52	52
Railways	Segments	3,549	0	0	3,549	3,549
	Bridges	2,042	0	0	2,042	2,042
	Tunnels	3	0	0	3	3
	Facilities	101	0	0	101	101
Light Rail	Segments	15	0	0	15	15
	Bridges	112	0	0	112	112
	Tunnels	0	0	0	0	0
	Facilities	255	0	0	255	255
Bus	Facilities	61	0	0	61	61
Ferry	Facilities	28	0	0	28	28
Port	Facilities	379	0	0	379	379
Airport	Facilities	139	2	0	139	139
	Runways	200	0	0	200	200

Table 6 provides damage estimates for the transportation system.

Note: Roadway segments, railroad tracks and light rail tracks are assumed to be damaged by ground failure only. If ground failure maps are not provided, damage estimates to these components will not be computed.

Tables 7-9 provide information on the damage to the utility lifeline systems. Table 7 provides damage to the utility system facilities. Table 8 provides estimates on the number of leaks and breaks by the pipelines of the utility systems. For electric power and potable water, Hazus performs a simplified system performance analysis. Table 9 provides a summary of the system performance information.

**Table 7 : Expected Utility System Facility Damage**

System	# of Locations				
	Total #	With at Least Moderate Damage	With Complete Damage	with Functionality > 50 %	
				After Day 1	After Day 7
Potable Water	28	4	0	21	28
Waste Water	204	8	0	178	204
Natural Gas	19	0	0	19	19
Oil Systems	35	0	0	35	35
Electrical Power	566	44	0	541	565
Communication	582	36	0	569	582

**Table 8 : Expected Utility System Pipeline Damage (Site Specific)**

System	Total Pipelines Length (miles)	Number of Leaks	Number of Breaks
Potable Water	178,993	12035	3009
Waste Water	107,396	6046	1511
Natural Gas	3,563	0	0
Oil	0	0	0

**Table 9: Expected Potable Water and Electric Power System Performance**

	Total # of Households	Number of Households without Service				
		At Day 1	At Day 3	At Day 7	At Day 30	At Day 90
Potable Water	5,831,946	544,268	491,982	384,243	87	0
Electric Power		434,818	271,811	108,062	9,147	591

## Induced Earthquake Damage

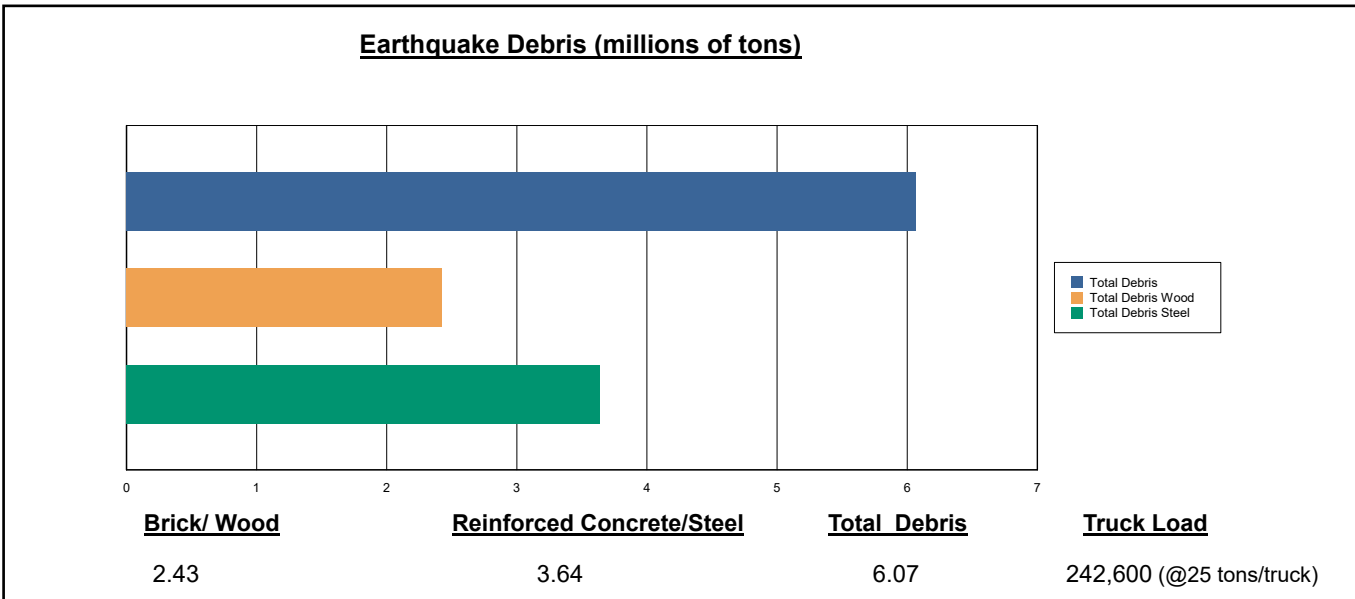
### Fire Following Earthquake

Fires often occur after an earthquake. Because of the number of fires and the lack of water to fight the fires, they can often burn out of control. Hazus uses a Monte Carlo simulation model to estimate the number of ignitions and the amount of burnt area. For this scenario, the model estimates that there will be 81 ignitions that will burn about 2.63 sq. mi 0.00 % of the region's total area.) The model also estimates that the fires will displace about 26,121 people and burn about 3,673 (millions of dollars) of building value.

### Debris Generation

Hazus estimates the amount of debris that will be generated by the earthquake. The model breaks the debris into two general categories: a) Brick/Wood and b) Reinforced Concrete/Steel. This distinction is made because of the different types of material handling equipment required to handle the debris.

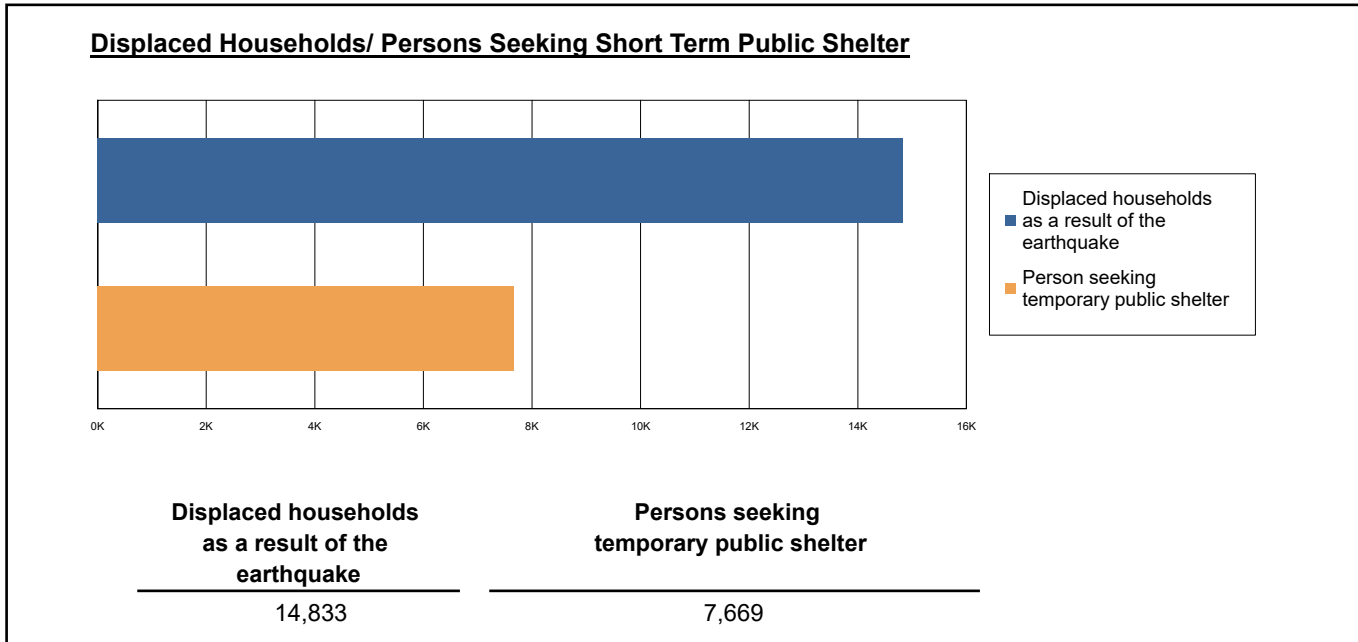
The model estimates that a total of 6,065,000 tons of debris will be generated. Of the total amount, Brick/Wood comprises 40.00% of the total, with the remainder being Reinforced Concrete/Steel. If the debris tonnage is converted to an estimated number of truckloads, it will require 242,600 truckloads (@25 tons/truck) to remove the debris generated by the earthquake.



## Social Impact

### Shelter Requirement

Hazus estimates the number of households that are expected to be displaced from their homes due to the earthquake and the number of displaced people that will require accommodations in temporary public shelters. The model estimates 14,833 households to be displaced due to the earthquake. Of these, 7,669 people (out of a total population of 16,846,162) will seek temporary shelter in public shelters.



### Casualties

Hazus estimates the number of people that will be injured and killed by the earthquake. The casualties are broken down into four (4) severity levels that describe the extent of the injuries. The levels are described as follows;

- Severity Level 1: Injuries will require medical attention but hospitalization is not needed.
- Severity Level 2: Injuries will require hospitalization but are not considered life-threatening
- Severity Level 3: Injuries will require hospitalization and can become life threatening if not promptly treated.
- Severity Level 4: Victims are killed by the earthquake.

The casualty estimates are provided for three (3) times of day: 2:00 AM, 2:00 PM and 5:00 PM. These times represent the periods of the day that different sectors of the community are at their peak occupancy loads. The 2:00 AM estimate considers that the residential occupancy load is maximum, the 2:00 PM estimate considers that the educational, commercial and industrial sector loads are maximum and 5:00 PM represents peak commute time.

Table 10 provides a summary of the casualties estimated for this earthquake

**Table 10: Casualty Estimates**

		Level 1	Level 2	Level 3	Level 4
<b>2 AM</b>	Commercial	55.78	9.54	1.06	2.07
	Commuting	0.64	0.87	1.45	0.28
	Educational	0.00	0.00	0.00	0.00
	Hotels	2.53	0.27	0.01	0.02
	Industrial	60.48	9.94	1.06	2.07
	Other-Residential	1693.86	253.32	25.15	48.65
	Single Family	1234.09	57.30	0.87	1.64
	<b>Total</b>	<b>3,047</b>	<b>331</b>	<b>30</b>	<b>55</b>
	<b>2 PM</b>	Commercial	3719.87	638.72	71.36
Commuting		5.79	7.84	13.09	2.54
Educational		814.39	131.83	14.64	28.38
Hotels		0.49	0.05	0.00	0.00
Industrial		443.75	73.24	7.87	15.21
Other-Residential		535.72	83.09	8.75	16.28
Single Family		341.74	16.72	0.32	0.57
<b>Total</b>		<b>5,862</b>	<b>951</b>	<b>116</b>	<b>201</b>
<b>5 PM</b>		Commercial	2606.84	449.60	50.77
	Commuting	114.09	153.46	257.49	49.94
	Educational	114.75	16.26	1.61	3.10
	Hotels	0.76	0.08	0.00	0.01
	Industrial	277.34	45.77	4.92	9.50
	Other-Residential	646.05	99.18	10.31	19.17
	Single Family	451.86	22.03	0.40	0.70
	<b>Total</b>	<b>4,212</b>	<b>786</b>	<b>325</b>	<b>179</b>

## Economic Loss

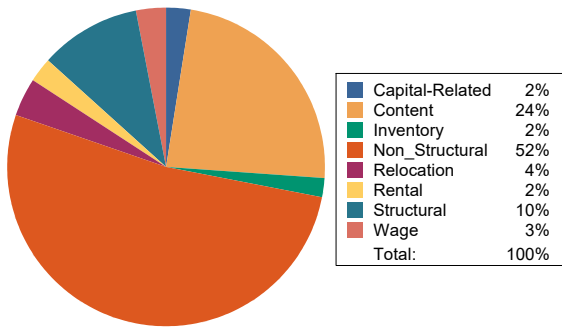
The total economic loss estimated for the earthquake is 62,970.31 (millions of dollars), which includes building and lifeline related losses based on the region's available inventory. The following three sections provide more detailed information about these losses.

## Building-Related Losses

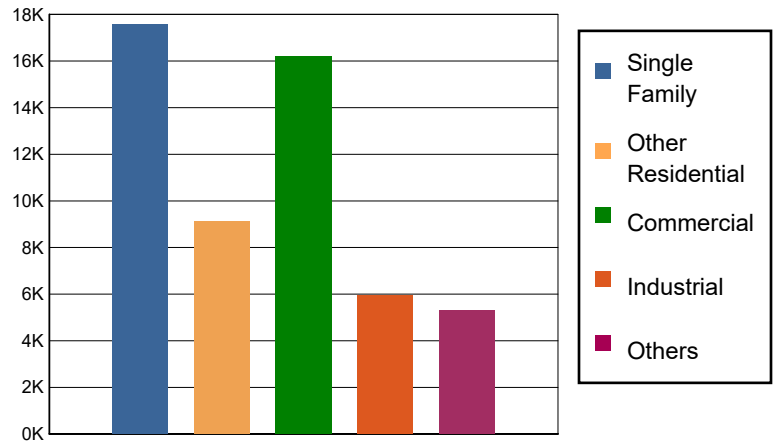
The building losses are broken into two categories: direct building losses and business interruption losses. The direct building losses are the estimated costs to repair or replace the damage caused to the building and its contents. The business interruption losses are the losses associated with inability to operate a business because of the damage sustained during the earthquake. Business interruption losses also include the temporary living expenses for those people displaced from their homes because of the earthquake.

The total building-related losses were 54,097.22 (millions of dollars); 12 % of the estimated losses were related to the business interruption of the region. By far, the largest loss was sustained by the residential occupancies which made up over 49 % of the total loss. Table 11 below provides a summary of the losses associated with the building damage.

Earthquake Losses by Loss Type (\$ millions)



Earthquake Losses by Occupancy Type (\$ millions)



**Table 11: Building-Related Economic Loss Estimates**  
(Millions of dollars)

Category	Area	Single Family	Other Residential	Commercial	Industrial	Others	Total
<b>Income Losses</b>							
	Wage	0.0000	134.1230	1289.0453	59.6029	166.7294	1,649.5006
	Capital-Related	0.0000	57.0147	1196.6356	36.0525	27.8190	1,317.5218
	Rental	128.3094	468.3521	627.6965	34.4450	90.5903	1,349.3933
	Relocation	390.6852	300.1181	877.7996	161.5094	437.8342	2,167.9465
	<b>Subtotal</b>	<b>518.9946</b>	<b>959.6079</b>	<b>3991.1770</b>	<b>291.6098</b>	<b>722.9729</b>	<b>6484.3622</b>
<b>Capital Stock Losses</b>							
	Structural	1723.3847	961.7625	1708.7862	576.7438	590.3831	5,561.0603
	Non_Structural	11034.2774	5623.2472	6281.6044	2776.1540	2489.3322	28,204.6152
	Content	4284.7057	1551.7527	3622.0453	1995.4307	1402.4730	12,856.4074
	Inventory	0.0000	0.0000	613.2186	292.5550	85.0053	990.7789
	<b>Subtotal</b>	<b>17042.3678</b>	<b>8136.7624</b>	<b>12225.6545</b>	<b>5640.8835</b>	<b>4567.1936</b>	<b>47612.8618</b>
	<b>Total</b>	<b>17561.36</b>	<b>9096.37</b>	<b>16216.83</b>	<b>5932.49</b>	<b>5290.17</b>	<b>54097.22</b>

### Transportation and Utility Lifeline Losses

For the transportation and utility lifeline systems, Hazus computes the direct repair cost for each component only. There are no losses computed by Hazus for business interruption due to lifeline outages. Tables 12 & 13 provide a detailed breakdown in the expected lifeline losses.

**Table 12: Transportation System Economic Losses**  
(Millions of dollars)

System	Component	Inventory Value	Economic Loss	Loss Ratio (%)
Highway	Segments	108549.9650	0.0000	0.00
	Bridges	62853.6251	654.3149	1.04
	Tunnels	1011.6097	5.6110	0.55
	<b>Subtotal</b>	<b>172415.1998</b>	<b>659.9259</b>	
Railways	Segments	69510.7967	0.0000	0.00
	Bridges	11618.9800	62.5188	0.54
	Tunnels	1.8495	0.0922	4.99
	Facilities	268.9630	19.1518	7.12
	<b>Subtotal</b>	<b>81400.5892</b>	<b>81.7628</b>	
Light Rail	Segments	5403.2756	0.0000	0.00
	Bridges	15.3529	0.3306	2.15
	Tunnels	0.0000	0.0000	0.00
	Facilities	4154.0000	459.0260	11.05
	<b>Subtotal</b>	<b>9572.6285</b>	<b>459.3566</b>	
Bus	Facilities	137.0192	6.9141	5.05
	<b>Subtotal</b>	<b>137.0192</b>	<b>6.9141</b>	
Ferry	Facilities	37.2680	3.2760	8.79
	<b>Subtotal</b>	<b>37.2680</b>	<b>3.2760</b>	
Port	Facilities	1444.6891	145.1569	10.05
	<b>Subtotal</b>	<b>1444.6891</b>	<b>145.1569</b>	
Airport	Facilities	3077.9753	296.5208	9.63
	Runways	1929.4731	0.0000	0.00
	<b>Subtotal</b>	<b>5007.4484</b>	<b>296.5208</b>	
<b>Total</b>		<b>270,014.84</b>	<b>1,652.91</b>	

**Table 13: Utility System Economic Losses**  
(Millions of dollars)

System	Component	Inventory Value	Economic Loss	Loss Ratio (%)
Potable Water	Pipelines	0.0000	0.0000	0.00
	Facilities	1100.2320	63.7164	5.79
	Distribution Lines	5761.2154	54.1581	0.94
	<b>Subtotal</b>	<b>6861.4474</b>	<b>117.8745</b>	
Waste Water	Pipelines	0.0000	0.0000	0.00
	Facilities	35078.1672	1030.1856	2.94
	Distribution Lines	3456.7293	27.2050	0.79
	<b>Subtotal</b>	<b>38534.8965</b>	<b>1057.3906</b>	
Natural Gas	Pipelines	20194.4985	0.0000	0.00
	Facilities	746.9647	0.3019	0.04
	Distribution Lines	2304.4862	9.3202	0.40
	<b>Subtotal</b>	<b>23245.9494</b>	<b>9.6221</b>	
Oil Systems	Pipelines	0.0000	0.0000	0.00
	Facilities	4.1300	0.1161	2.81
	<b>Subtotal</b>	<b>4.1300</b>	<b>0.1161</b>	
Electrical Power	Facilities	148421.6218	6031.3723	4.06
	<b>Subtotal</b>	<b>148421.6218</b>	<b>6031.3723</b>	
Communication	Facilities	68.6760	3.7898	5.52
	<b>Subtotal</b>	<b>68.6760</b>	<b>3.7898</b>	
	<b>Total</b>	<b>217,136.72</b>	<b>7,220.17</b>	

---

## Appendix A: County Listing for the Region

Alameda,CA  
Alpine,CA  
Amador,CA  
Butte,CA  
Calaveras,CA  
Colusa,CA  
Contra Costa,CA  
El Dorado,CA  
Fresno,CA  
Glenn,CA  
Kern,CA  
Kings,CA  
Lake,CA  
Madera,CA  
Marin,CA  
Mariposa,CA  
Mendocino,CA  
Merced,CA  
Monterey,CA  
Napa,CA  
Nevada,CA  
Placer,CA  
Sacramento,CA  
San Benito,CA  
San Francisco,CA  
San Joaquin,CA  
San Luis Obispo,CA  
San Mateo,CA  
Santa Barbara,CA

---

Santa Clara,CA

Santa Cruz,CA

Solano,CA

Sonoma,CA

Stanislaus,CA

Sutter,CA

Tulare,CA

Tuolumne,CA

Yolo,CA

Yuba,CA

## Appendix B: Regional Population and Building Value Data

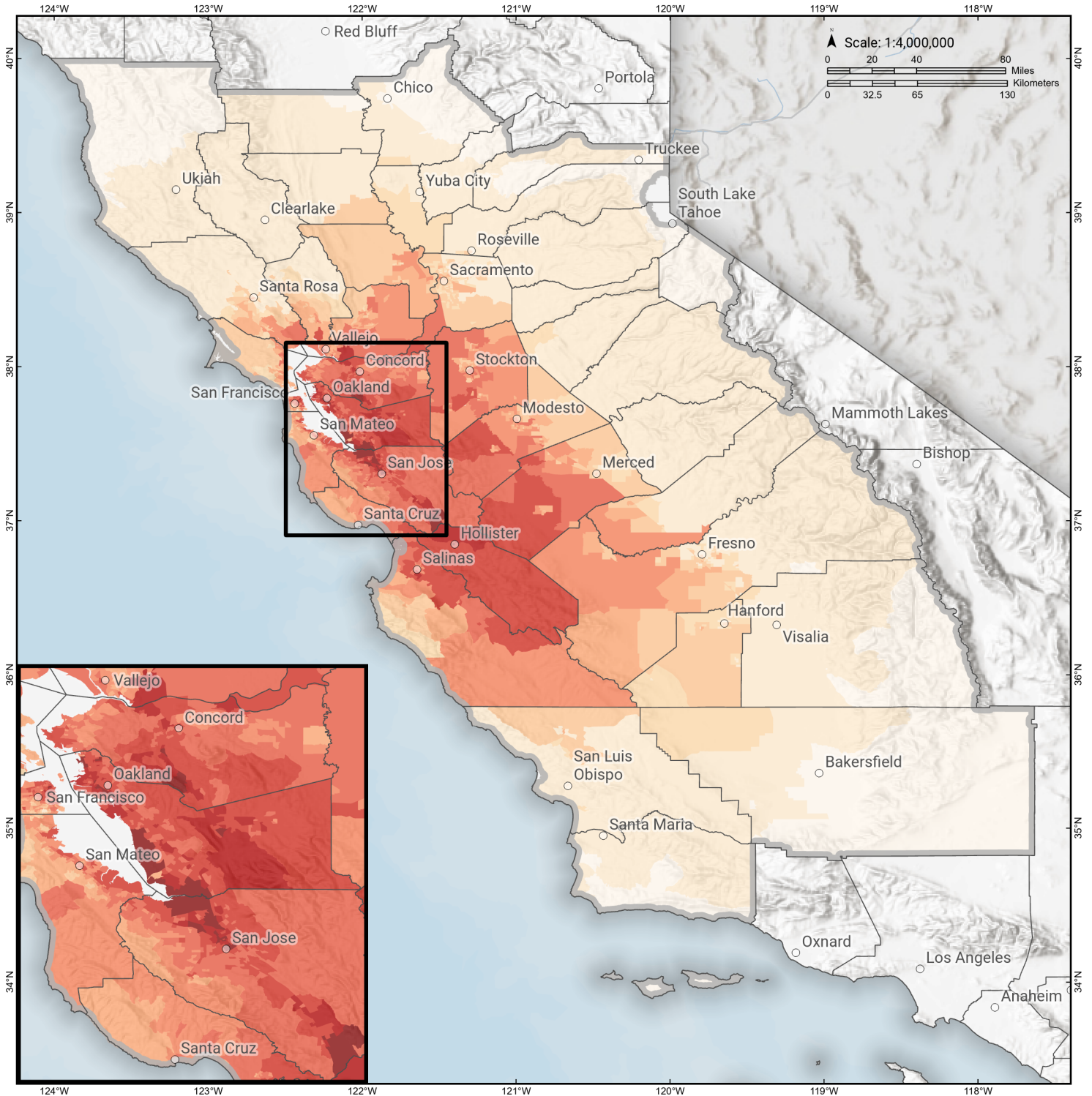
State	County Name	Population	Building Value (millions of dollars)		
			Residential	Non-Residential	Total
California	Alameda	1,682,353	209,951	122,639	332,590
	Alpine	1,204	721	139	861
	Amador	40,474	5,608	2,517	8,125
	Butte	211,632	25,875	16,639	42,514
	Calaveras	45,292	8,305	4,893	13,199
	Colusa	21,839	2,244	2,024	4,268
	Contra Costa	1,165,927	158,118	60,339	218,458
	El Dorado	191,185	34,907	9,704	44,611
	Fresno	1,008,654	98,532	61,772	160,304
	Glenn	28,917	2,791	3,717	6,508
	Kern	909,235	87,567	59,168	146,736
	Kings	152,486	13,719	7,861	21,581
	Lake	68,163	9,699	4,530	14,229
	Madera	156,255	18,025	9,641	27,667
	Marin	262,321	47,738	15,030	62,769
	Mariposa	17,131	3,299	1,141	4,441
	Mendocino	91,601	14,237	8,510	22,748
	Merced	281,202	25,194	26,098	51,292
	Monterey	439,035	47,655	28,750	76,405
	Napa	138,019	20,517	13,045	33,563
	Nevada	102,241	17,908	6,108	24,016
	Placer	404,739	69,985	24,193	94,179
	Sacramento	1,585,055	179,811	83,911	263,723
	San Benito	64,209	9,440	3,799	13,239
	San Francisco	873,965	108,848	46,020	154,869
	San Joaquin	779,233	82,706	56,882	139,589
	San Luis Obispo	282,424	41,720	20,896	62,616
	San Mateo	764,442	110,372	44,995	155,368
	Santa Barbara	448,229	49,971	28,481	78,452
	Santa Clara	1,936,259	261,111	120,471	381,582
	Santa Cruz	270,861	36,147	18,805	54,952
	Solano	453,491	55,802	26,393	82,195
	Sonoma	488,863	68,827	35,781	104,609
	Stanislaus	552,878	62,937	37,511	100,449
	Sutter	99,633	10,618	6,448	17,066
	Tulare	473,117	43,262	31,210	74,472
	Tuolumne	55,620	8,964	3,507	12,471
	Yolo	216,403	24,130	18,343	42,473
	Yuba	81,575	8,161	4,677	12,839

---

Total Region		16,846,162	2,085,422	1,076,588	3,162,028
--------------	--	------------	-----------	-----------	-----------

# Calaveras: CN+CC+CS+CE

## Debris Generated by Census Tract



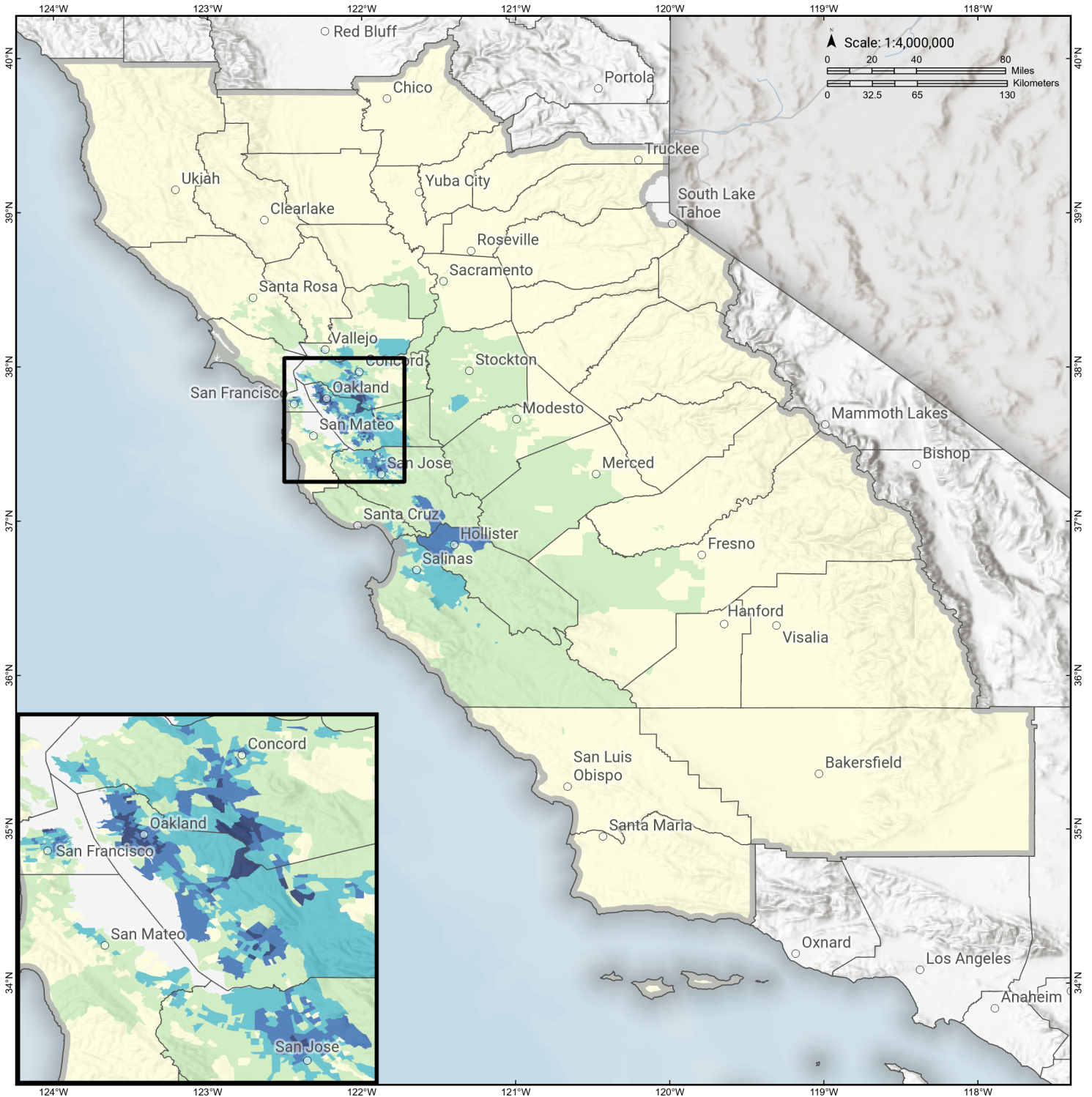
**Study Region:** Calaveras: CN+CC+CS+CE  
**Scenario:** calaverascnccccscsha\_m7p43\_se

**Debris Generated (in tons)**



# Calaveras: CN+CC+CS+CE

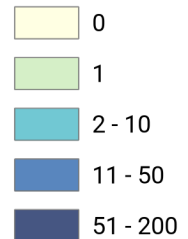
## Displaced Households by Census Tract



**Study Region:** Calaveras: CN+CC+CS+CE  
**Scenario:** calaverascnccscsesha\_m7p43\_se

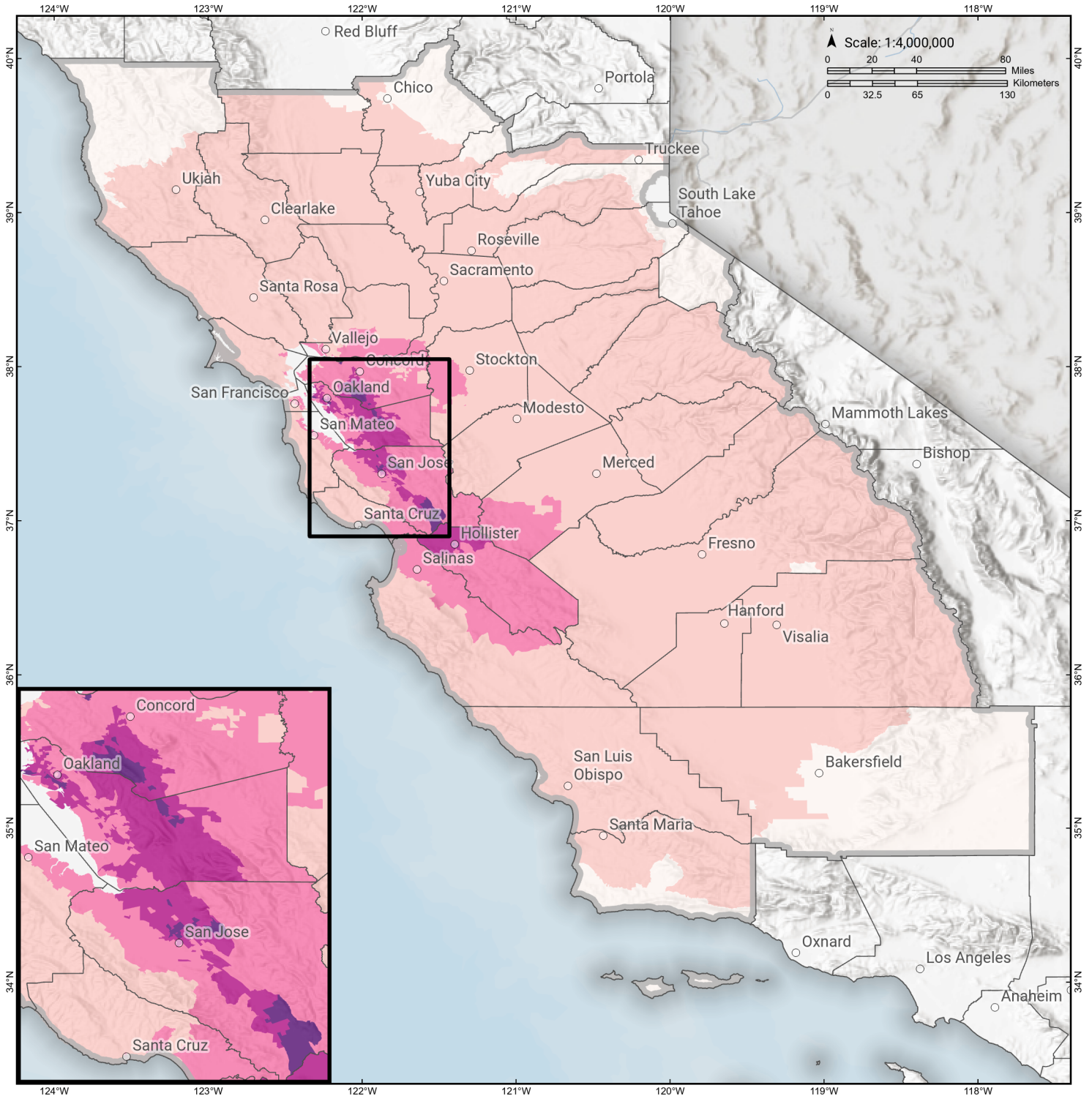


### Displaced Households



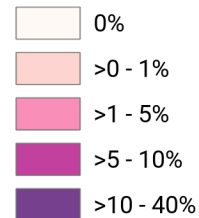
# Calaveras: CN+CC+CS+CE

## Loss Ratio by Census Tract



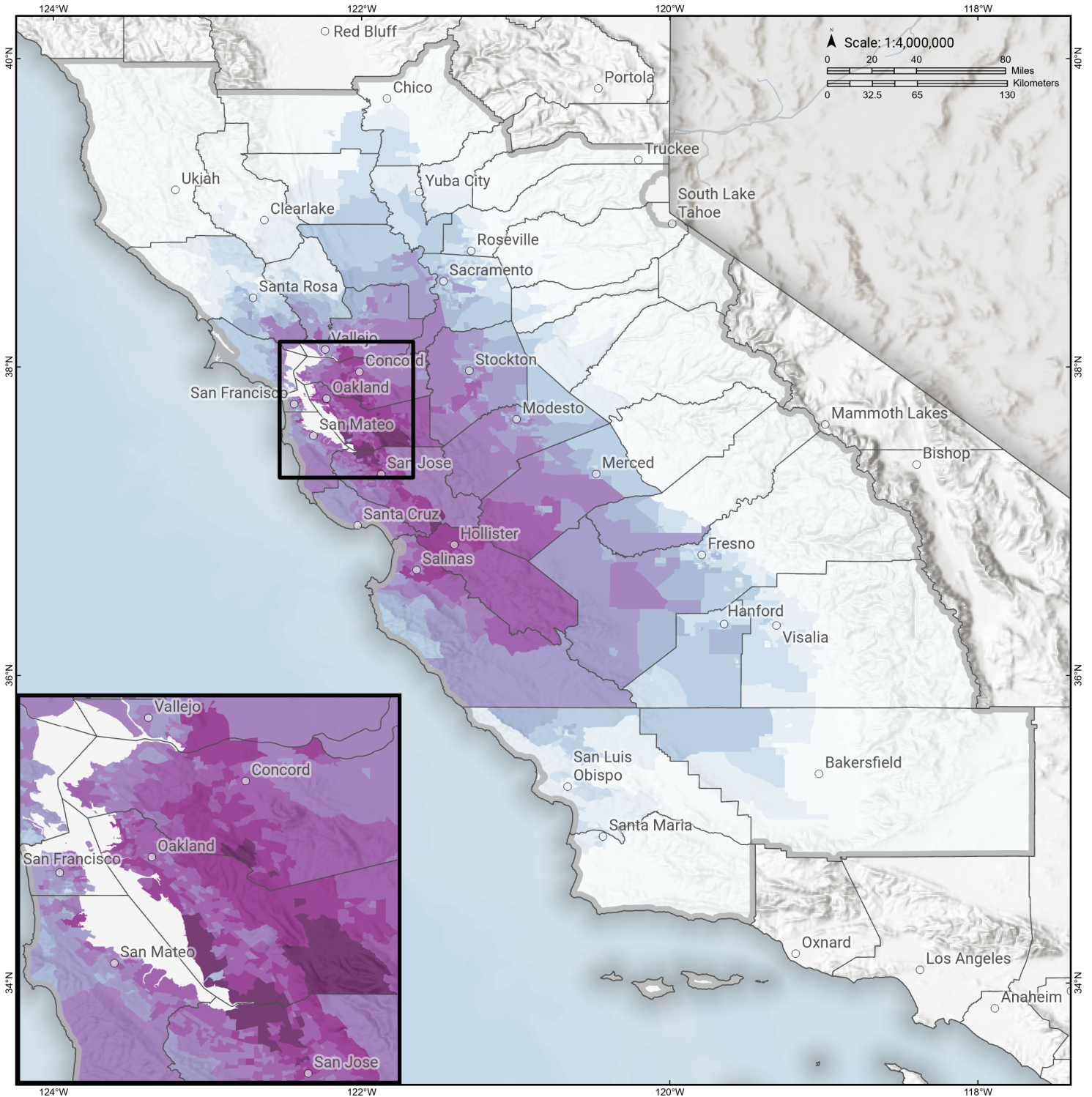
**Study Region:** Calaveras: CN+CC+CS+CE  
**Scenario:** calaverascnccccsesha\_m7p43\_se

**Loss Ratio** (ratio of building related economic loss to exposed value of buildings)



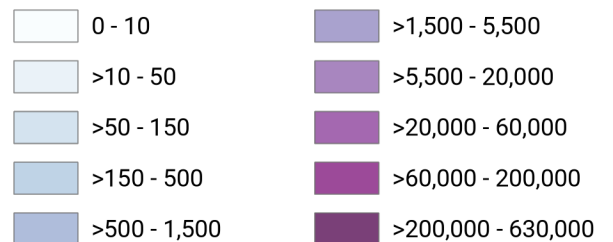
# Calaveras: CN+CC+CS+CE

## Total Building Related Economic Loss by Census Tract



**Study Region:** Calaveras: CN+CC+CS+CE  
**Scenario:** calaverascnccscsesha\_m7p43\_se

### Economic Loss (in thousands of USD \$)



## Building Damage by Count by General Occupancy

May 20, 2024

	# of Buildings					Total
	None	Slight	Moderate	Extensive	Complete	
<b>California</b>						
<b>Alameda</b>						
<i>Government</i>	4,525	3,748	1,917	309	29	10,528
<i>Commercial</i>	11,945	11,073	6,710	1,948	313	31,989
<i>Agriculture</i>	154	151	86	27	6	422
<i>Religion</i>	708	662	450	143	23	1,986
<i>Single Family</i>	170,265	156,940	16,867	98	3	344,173
<i>Education</i>	669	284	119	39	6	1,117
<i>Industrial</i>	3,929	3,560	2,064	558	92	10,205
<i>Other Residential</i>	28,961	22,725	6,845	2,507	359	61,396
<b>Alpine</b>						
<i>Education</i>	5	0	0	0	0	5
<i>Commercial</i>	48	0	0	0	0	48
<i>Government</i>	4	0	0	0	0	4
<i>Agriculture</i>	0	0	0	0	0	0
<i>Religion</i>	1	0	0	0	0	1
<i>Industrial</i>	14	0	0	0	0	14
<i>Single Family</i>	842	0	0	0	0	842
<i>Other Residential</i>	97	0	0	0	0	97
<b>Amador</b>						

	# of Buildings					Total
	None	Slight	Moderate	Extensive	Complete	
<i>Industrial</i>	235	0	0	0	0	235
<i>Other Residential</i>	1,036	1	0	0	0	1,037
<i>Single Family</i>	14,962	0	0	0	0	14,962
<i>Education</i>	23	0	0	0	0	23
<i>Government</i>	32	0	0	0	0	32
<i>Commercial</i>	1,368	0	0	0	0	1,368
<i>Agriculture</i>	44	0	0	0	0	44
<i>Religion</i>	45	0	0	0	0	45
<b>Butte</b>						
<i>Religion</i>	531	0	0	0	0	531
<i>Agriculture</i>	510	0	0	0	0	510
<i>Government</i>	147	0	0	0	0	147
<i>Commercial</i>	6,384	1	0	0	0	6,385
<i>Industrial</i>	1,522	0	0	0	0	1,522
<i>Other Residential</i>	21,495	3	0	0	0	21,498
<i>Single Family</i>	50,283	0	0	0	0	50,283
<i>Education</i>	172	0	0	0	0	172
<b>Calaveras</b>						
<i>Education</i>	35	0	0	0	0	35
<i>Government</i>	84	0	0	0	0	84
<i>Other Residential</i>	2,557	2	0	0	0	2,559
<i>Commercial</i>	1,413	0	0	0	0	1,413
<i>Religion</i>	130	0	0	0	0	130
<i>Agriculture</i>	2,206	1	0	0	0	2,207
<i>Industrial</i>	466	0	0	0	0	466

	# of Buildings					Total
	None	Slight	Moderate	Extensive	Complete	
<b>Colusa</b>						
<i>Single Family</i>	22,148	0	0	0	0	22,148
<i>Agriculture</i>	142	0	0	0	0	142
<i>Religion</i>	58	0	0	0	0	58
<i>Commercial</i>	793	1	0	0	0	794
<i>Industrial</i>	113	0	0	0	0	113
<i>Other Residential</i>	953	1	0	0	0	954
<i>Single Family</i>	5,953	1	0	0	0	5,954
<i>Government</i>	32	0	0	0	0	32
<i>Education</i>	33	0	0	0	0	33
<b>Contra Costa</b>						
<i>Commercial</i>	9,031	5,541	2,794	545	79	17,991
<i>Agriculture</i>	381	226	113	26	4	749
<i>Religion</i>	655	348	181	38	4	1,226
<i>Single Family</i>	174,273	96,227	11,328	106	1	281,935
<i>Government</i>	3,157	1,233	516	104	14	5,024
<i>Education</i>	457	146	44	5	1	653
<i>Industrial</i>	2,527	1,361	693	148	19	4,749
<i>Other Residential</i>	15,228	9,847	3,432	586	30	29,124
<b>El Dorado</b>						
<i>Education</i>	128	0	0	0	0	128
<i>Industrial</i>	1,199	0	0	0	0	1,199
<i>Other Residential</i>	10,420	0	0	0	0	10,420
<i>Single Family</i>	71,424	0	0	0	0	71,424
<i>Government</i>	100	0	0	0	0	100

	# of Buildings					Total
	None	Slight	Moderate	Extensive	Complete	
<i>Commercial</i>	4,768	0	0	0	0	4,768
<i>Religion</i>	180	0	0	0	0	180
<i>Agriculture</i>	161	0	0	0	0	161
<b>Fresno</b>						
<i>Commercial</i>	20,951	95	8	0	0	21,054
<i>Religion</i>	1,497	9	1	0	0	1,507
<i>Agriculture</i>	3,372	45	4	0	0	3,421
<i>Industrial</i>	5,310	35	3	0	0	5,348
<i>Other Residential</i>	40,692	259	21	0	0	40,973
<i>Single Family</i>	226,124	300	1	0	0	226,425
<i>Government</i>	289	2	0	0	0	291
<i>Education</i>	602	0	0	0	0	602
<b>Glenn</b>						
<i>Government</i>	99	0	0	0	0	99
<i>Education</i>	35	0	0	0	0	35
<i>Industrial</i>	254	0	0	0	0	254
<i>Other Residential</i>	2,151	1	0	0	0	2,152
<i>Single Family</i>	7,417	0	0	0	0	7,417
<i>Commercial</i>	885	0	0	0	0	885
<i>Agriculture</i>	1,365	0	0	0	0	1,365
<i>Religion</i>	89	0	0	0	0	89
<b>Kern</b>						
<i>Single Family</i>	205,139	0	0	0	0	205,139
<i>Education</i>	462	0	0	0	0	462
<i>Industrial</i>	6,047	0	0	0	0	6,047

		# of Buildings					
		None	Slight	Moderate	Extensive	Complete	Total
<b>Kings</b>	<i>Other Residential</i>	54,516	4	0	0	0	54,520
	<i>Government</i>	443	0	0	0	0	443
	<i>Commercial</i>	15,566	1	0	0	0	15,567
	<i>Religion</i>	1,524	0	0	0	0	1,524
	<i>Agriculture</i>	4,645	0	0	0	0	4,645
	<i>Commercial</i>	2,306	11	1	0	0	2,318
	<i>Agriculture</i>	305	1	0	0	0	306
	<i>Religion</i>	209	1	0	0	0	210
	<i>Government</i>	72	0	0	0	0	72
	<i>Other Residential</i>	4,319	22	1	0	0	4,342
<b>Lake</b>	<i>Industrial</i>	552	3	0	0	0	555
	<i>Single Family</i>	36,199	46	0	0	0	36,245
	<i>Education</i>	103	0	0	0	0	103
	<i>Agriculture</i>	161	0	0	0	0	161
	<i>Single Family</i>	21,633	0	0	0	0	21,633
	<i>Other Residential</i>	14,593	8	0	0	0	14,601
	<i>Education</i>	68	0	0	0	0	68
	<i>Industrial</i>	354	0	0	0	0	354
	<i>Religion</i>	140	0	0	0	0	140
	<i>Commercial</i>	2,091	0	0	0	0	2,091
<b>Madera</b>	<i>Government</i>	78	0	0	0	0	78
	<i>Commercial</i>	2,889	15	1	0	0	2,905

	# of Buildings					Total
	None	Slight	Moderate	Extensive	Complete	
<i>Religion</i>	119	0	0	0	0	119
<i>Government</i>	111	0	0	0	0	111
<i>Agriculture</i>	623	9	1	0	0	634
<i>Other Residential</i>	6,595	37	2	0	0	6,635
<i>Industrial</i>	897	5	0	0	0	903
<i>Single Family</i>	38,843	69	0	0	0	38,912
<i>Education</i>	115	0	0	0	0	115
<b>Marin</b>						
<i>Other Residential</i>	7,550	302	38	1	0	7,890
<i>Government</i>	136	6	1	0	0	143
<i>Education</i>	270	4	0	0	0	274
<i>Commercial</i>	7,783	430	55	1	0	8,270
<i>Religion</i>	305	13	1	0	0	319
<i>Agriculture</i>	177	11	3	0	0	190
<i>Single Family</i>	75,125	1,588	12	0	0	76,724
<i>Industrial</i>	1,390	124	20	0	0	1,535
<b>Mariposa</b>						
<i>Single Family</i>	8,084	0	0	0	0	8,084
<i>Education</i>	27	0	0	0	0	27
<i>Industrial</i>	94	0	0	0	0	94
<i>Other Residential</i>	307	0	0	0	0	307
<i>Commercial</i>	689	0	0	0	0	689
<i>Religion</i>	36	0	0	0	0	36
<i>Agriculture</i>	29	0	0	0	0	29

	# of Buildings					Total
	None	Slight	Moderate	Extensive	Complete	
<i>Government</i>	33	0	0	0	0	33
<b>Mendocino</b>						
<i>Commercial</i>	3,436	0	0	0	0	3,436
<i>Religion</i>	216	0	0	0	0	216
<i>Agriculture</i>	184	0	0	0	0	184
<i>Other Residential</i>	7,060	0	0	0	0	7,060
<i>Government</i>	83	0	0	0	0	83
<i>Single Family</i>	25,969	0	0	0	0	25,969
<i>Education</i>	101	0	0	0	0	101
<i>Industrial</i>	869	0	0	0	0	869
<b>Merced</b>						
<i>Education</i>	162	1	0	0	0	163
<i>Government</i>	168	3	0	0	0	171
<i>Commercial</i>	4,592	147	15	0	0	4,754
<i>Religion</i>	334	10	1	0	0	345
<i>Agriculture</i>	6,929	535	173	15	0	7,653
<i>Single Family</i>	62,389	1,204	6	0	0	63,598
<i>Industrial</i>	988	31	3	0	0	1,022
<i>Other Residential</i>	10,306	419	61	1	0	10,787
<b>Monterey</b>						
<i>Single Family</i>	77,726	12,814	336	0	0	90,876
<i>Industrial</i>	1,363	340	127	19	1	1,850
<i>Education</i>	222	15	2	0	0	239
<i>Other Residential</i>	15,247	3,470	1,010	80	2	19,809
<i>Commercial</i>	7,365	1,370	443	66	2	9,246

		# of Buildings					
		None	Slight	Moderate	Extensive	Complete	Total
<b>Napa</b>	<i>Religion</i>	466	81	28	5	0	580
	<i>Agriculture</i>	1,556	195	55	8	0	1,815
	<i>Government</i>	152	26	7	1	0	185
	<i>Agriculture</i>	338	10	2	0	0	349
	<i>Commercial</i>	3,828	172	21	0	0	4,021
	<i>Religion</i>	141	7	1	0	0	148
	<i>Single Family</i>	37,831	925	5	0	0	38,761
	<i>Other Residential</i>	6,608	334	35	0	0	6,978
	<i>Government</i>	97	5	1	0	0	103
	<i>Education</i>	128	3	1	0	0	132
<b>Nevada</b>	<i>Industrial</i>	1,290	68	9	0	0	1,367
	<i>Religion</i>	189	0	0	0	0	189
	<i>Commercial</i>	2,835	0	0	0	0	2,835
	<i>Government</i>	60	0	0	0	0	60
	<i>Agriculture</i>	132	0	0	0	0	132
	<i>Single Family</i>	43,280	0	0	0	0	43,280
	<i>Education</i>	108	0	0	0	0	108
	<i>Industrial</i>	1,161	0	0	0	0	1,161
	<i>Other Residential</i>	6,384	0	0	0	0	6,384
	<b>Placer</b>	<i>Education</i>	231	0	0	0	0
<i>Government</i>		377	0	0	0	0	377
<i>Commercial</i>		8,534	4	0	0	0	8,538

	# of Buildings					Total
	None	Slight	Moderate	Extensive	Complete	
<i>Agriculture</i>	258	0	0	0	0	258
<i>Religion</i>	382	0	0	0	0	382
<i>Other Residential</i>	14,835	8	0	0	0	14,843
<i>Single Family</i>	134,702	17	0	0	0	134,719
<i>Industrial</i>	2,702	1	0	0	0	2,703
<b>Sacramento</b>						
<i>Single Family</i>	385,809	1,025	6	0	0	386,840
<i>Industrial</i>	6,708	43	5	0	0	6,756
<i>Other Residential</i>	55,942	414	56	1	0	56,413
<i>Education</i>	828	1	0	0	0	829
<i>Commercial</i>	26,054	205	32	4	0	26,295
<i>Religion</i>	1,683	17	2	0	0	1,702
<i>Agriculture</i>	616	4	1	0	0	621
<i>Government</i>	607	11	1	0	0	619
<b>San Benito</b>						
<i>Other Residential</i>	232	630	311	152	50	1,375
<i>Government</i>	9	12	14	5	6	45
<i>Single Family</i>	3,706	9,104	1,891	25	0	14,726
<i>Industrial</i>	83	126	87	18	11	326
<i>Education</i>	16	16	7	1	2	42
<i>Agriculture</i>	100	104	41	5	2	253
<i>Religion</i>	13	25	15	4	8	64
<i>Commercial</i>	250	402	257	74	97	1,080
<b>San Francisco</b>						
<i>Other Residential</i>	34,142	7,653	2,557	175	3	44,529

	# of Buildings					Total
	None	Slight	Moderate	Extensive	Complete	
<i>Government</i>	166	81	38	4	0	289
<i>Single Family</i>	135,486	13,453	1,654	109	1	150,703
<i>Education</i>	474	63	31	3	0	572
<i>Industrial</i>	2,745	755	328	31	1	3,860
<i>Commercial</i>	14,296	4,751	2,114	181	3	21,344
<i>Religion</i>	1,002	249	89	6	0	1,345
<i>Agriculture</i>	125	27	10	1	0	162
<b>San Joaquin</b>						
<i>Commercial</i>	12,159	626	77	2	0	12,864
<i>Religion</i>	829	43	5	0	0	877
<i>Agriculture</i>	710	37	5	0	0	753
<i>Government</i>	286	15	3	0	0	304
<i>Single Family</i>	178,703	9,391	801	27	0	188,922
<i>Education</i>	388	7	1	0	0	395
<i>Industrial</i>	4,625	266	36	1	0	4,928
<i>Other Residential</i>	20,320	1,311	170	4	0	21,805
<b>San Luis Obispo</b>						
<i>Agriculture</i>	420	1	0	0	0	421
<i>Government</i>	185	0	0	0	0	185
<i>Religion</i>	359	1	0	0	0	360
<i>Commercial</i>	9,362	12	1	0	0	9,375
<i>Other Residential</i>	20,144	69	4	0	0	20,216
<i>Single Family</i>	85,621	18	0	0	0	85,639
<i>Industrial</i>	2,552	4	0	0	0	2,556
<i>Education</i>	182	0	0	0	0	182

	# of Buildings					Total
	None	Slight	Moderate	Extensive	Complete	
<b>San Mateo</b>						
<i>Religion</i>	607	105	23	1	0	736
<i>Commercial</i>	11,927	2,018	427	23	1	14,395
<i>Government</i>	245	44	10	0	0	299
<i>Agriculture</i>	457	61	18	3	0	539
<i>Single Family</i>	144,936	14,627	368	0	0	159,931
<i>Other Residential</i>	18,855	3,058	498	42	1	22,453
<i>Industrial</i>	3,588	696	177	11	0	4,472
<i>Education</i>	457	27	5	0	0	489
<b>Santa Barbara</b>						
<i>Education</i>	299	0	0	0	0	299
<i>Government</i>	239	0	0	0	0	239
<i>Other Residential</i>	24,105	5	0	0	0	24,111
<i>Agriculture</i>	464	0	0	0	0	464
<i>Religion</i>	621	0	0	0	0	621
<i>Commercial</i>	9,820	0	0	0	0	9,820
<i>Industrial</i>	2,840	0	0	0	0	2,840
<i>Single Family</i>	98,982	0	0	0	0	98,982
<b>Santa Clara</b>						
<i>Single Family</i>	234,053	172,854	20,073	209	29	427,219
<i>Government</i>	205	159	105	26	8	502
<i>Other Residential</i>	27,336	21,300	7,140	2,989	394	59,160
<i>Education</i>	832	261	68	9	3	1,173
<i>Industrial</i>	3,849	3,358	1,779	364	83	9,433
<i>Religion</i>	718	503	257	50	12	1,540

	# of Buildings					Total
	None	Slight	Moderate	Extensive	Complete	
<i>Commercial</i>	16,766	12,014	5,406	1,031	253	35,469
<i>Agriculture</i>	319	307	201	55	13	895
<b>Santa Cruz</b>						
<i>Agriculture</i>	609	158	60	12	1	840
<i>Religion</i>	299	45	13	2	0	359
<i>Other Residential</i>	12,225	2,210	423	33	1	14,892
<i>Industrial</i>	1,485	251	74	9	0	1,819
<i>Single Family</i>	62,125	6,631	114	0	0	68,870
<i>Education</i>	208	14	3	0	0	225
<i>Commercial</i>	5,620	847	207	19	0	6,694
<i>Government</i>	106	15	5	1	0	127
<b>Solano</b>						
<i>Agriculture</i>	218	21	5	1	0	245
<i>Religion</i>	390	50	12	2	0	454
<i>Commercial</i>	6,332	751	168	17	1	7,268
<i>Government</i>	136	14	2	0	0	152
<i>Other Residential</i>	10,651	1,409	244	13	0	12,317
<i>Industrial</i>	1,721	294	78	8	0	2,101
<i>Single Family</i>	111,962	8,906	100	0	0	120,968
<i>Education</i>	216	8	1	0	0	225
<b>Sonoma</b>						
<i>Government</i>	314	4	1	0	0	319
<i>Other Residential</i>	24,715	292	26	0	0	25,033
<i>Education</i>	366	1	0	0	0	367
<i>Religion</i>	570	6	0	0	0	576

	# of Buildings					Total
	None	Slight	Moderate	Extensive	Complete	
<i>Commercial</i>	11,962	134	14	0	0	12,110
<i>Agriculture</i>	1,273	26	5	0	0	1,304
<i>Single Family</i>	141,515	513	1	0	0	142,028
<i>Industrial</i>	3,765	53	6	0	0	3,825
<b>Stanislaus</b>						
<i>Other Residential</i>	18,743	746	80	1	0	19,569
<i>Education</i>	304	3	0	0	0	307
<i>Industrial</i>	3,287	163	24	1	0	3,475
<i>Single Family</i>	139,607	3,104	13	0	0	142,724
<i>Government</i>	654	24	2	0	0	680
<i>Religion</i>	433	20	3	0	0	456
<i>Commercial</i>	9,874	437	57	1	0	10,369
<i>Agriculture</i>	1,173	55	11	1	0	1,239
<b>Sutter</b>						
<i>Other Residential</i>	3,110	3	0	0	0	3,113
<i>Government</i>	77	0	0	0	0	77
<i>Education</i>	62	0	0	0	0	62
<i>Industrial</i>	636	0	0	0	0	636
<i>Single Family</i>	24,510	2	0	0	0	24,512
<i>Agriculture</i>	1,122	3	0	0	0	1,125
<i>Commercial</i>	2,051	1	0	0	0	2,052
<i>Religion</i>	154	0	0	0	0	154
<b>Tulare</b>						
<i>Religion</i>	827	0	0	0	0	827
<i>Commercial</i>	8,870	2	0	0	0	8,873

	# of Buildings					Total
	None	Slight	Moderate	Extensive	Complete	
<i>Agriculture</i>	3,553	1	0	0	0	3,555
<i>Government</i>	461	0	0	0	0	461
<i>Single Family</i>	112,033	1	0	0	0	112,034
<i>Education</i>	269	0	0	0	0	269
<i>Industrial</i>	2,147	1	0	0	0	2,148
<i>Other Residential</i>	20,011	10	0	0	0	20,022
<b>Tuolumne</b>						
<i>Education</i>	57	0	0	0	0	57
<i>Government</i>	143	0	0	0	0	143
<i>Commercial</i>	1,576	0	0	0	0	1,576
<i>Religion</i>	121	0	0	0	0	121
<i>Agriculture</i>	82	0	0	0	0	82
<i>Other Residential</i>	4,962	0	0	0	0	4,962
<i>Industrial</i>	383	0	0	0	0	383
<i>Single Family</i>	21,645	0	0	0	0	21,645
<b>Yolo</b>						
<i>Education</i>	130	1	0	0	0	131
<i>Government</i>	109	2	0	0	0	111
<i>Industrial</i>	1,100	16	1	0	0	1,117
<i>Other Residential</i>	9,753	104	5	0	0	9,861
<i>Single Family</i>	42,311	278	0	0	0	42,589
<i>Commercial</i>	4,165	55	4	0	0	4,225
<i>Agriculture</i>	278	3	0	0	0	281
<i>Religion</i>	239	3	0	0	0	242
<b>Yuba</b>						

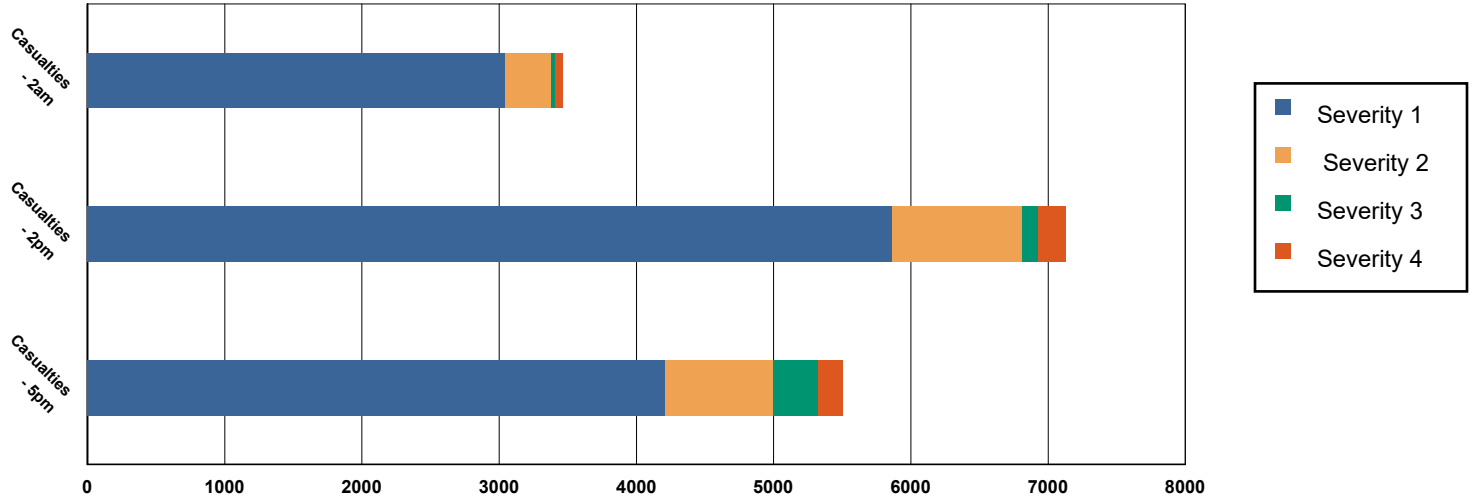
	# of Buildings					Total
	None	Slight	Moderate	Extensive	Complete	
<i>Other Residential</i>	7,018	3	0	0	0	7,021
<i>Government</i>	591	0	0	0	0	591
<i>Education</i>	54	0	0	0	0	54
<i>Agriculture</i>	92	0	0	0	0	92
<i>Religion</i>	98	0	0	0	0	98
<i>Commercial</i>	1,198	1	0	0	0	1,199
<i>Industrial</i>	404	0	0	0	0	404
<i>Single Family</i>	18,867	0	0	0	0	18,867
<b>Total</b>	<b>4,459,933</b>	<b>649,823</b>	<b>105,644</b>	<b>13,153</b>	<b>1,972</b>	<b>5,230,525</b>
<b>Region Total</b>	<b>4,459,933</b>	<b>649,823</b>	<b>105,644</b>	<b>13,153</b>	<b>1,972</b>	<b>5,230,525</b>

Totals only reflect data for those census tracts/blocks included in the user's study region and will reflect the entire county/state only if all of the census blocks for that county/states were selected at the time of study region creation.

### Casualties Summary Report

May 20, 2024

### Region Total Casualties



### Injury Severity Level

Severity 1      Severity 2      Severity 3      Severity 4      Total

#### California

##### Alameda

##### Casualties - 2am

	Severity 1	Severity 2	Severity 3	Severity 4	Total
Single Family	359	16	0	0	374
Hotels	0	0	0	0	1
Commuting	0	0	1	0	1
Educational	0	0	0	0	0
Industrial	23	4	0	1	29
Commercial	24	4	0	1	30
Other-Residential	659	104	11	21	794
<b>Total Casualties - 2am</b>	<b>1,066</b>	<b>128</b>	<b>12</b>	<b>23</b>	<b>1,229</b>

##### Casualties - 2pm

Industrial	171	30	3	7	211
Educational	320	51	5	10	385
Other-Residential	209	33	4	7	252
Single Family	97	4	0	0	102
Hotels	0	0	0	0	0
Commuting	2	3	5	1	10
Commercial	1,649	288	32	62	2,031

## Injury Severity Level

	Severity 1	Severity 2	Severity 3	Severity 4	Total
--	------------	------------	------------	------------	-------

### California

#### Alameda

	Severity 1	Severity 2	Severity 3	Severity 4	Total
<b>Total Casualties - 2pm</b>	<b>2,448</b>	<b>410</b>	<b>49</b>	<b>86</b>	<b>2,992</b>
<b>Casualties - 5pm</b>					
<i>Commuting</i>	40	52	89	17	197
<i>Single Family</i>	131	6	0	0	137
<i>Commercial</i>	1,176	205	23	43	1,446
<i>Hotels</i>	0	0	0	0	0
<i>Educational</i>	45	7	1	1	53
<i>Industrial</i>	107	19	2	4	132
<i>Other-Residential</i>	253	41	4	8	307
<b>Total Casualties - 5pm</b>	<b>1,751</b>	<b>329</b>	<b>119</b>	<b>74</b>	<b>2,272</b>

#### Alpine

	Severity 1	Severity 2	Severity 3	Severity 4	Total
<b>Casualties - 2am</b>					
<i>Industrial</i>	0	0	0	0	0
<i>Single Family</i>	0	0	0	0	0
<i>Commercial</i>	0	0	0	0	0
<i>Other-Residential</i>	0	0	0	0	0
<i>Hotels</i>	0	0	0	0	0
<i>Commuting</i>	0	0	0	0	0
<i>Educational</i>	0	0	0	0	0
<b>Total Casualties - 2am</b>	<b>0</b>	<b>0</b>	<b>0</b>	<b>0</b>	<b>0</b>

	Severity 1	Severity 2	Severity 3	Severity 4	Total
<b>Casualties - 2pm</b>					
<i>Educational</i>	0	0	0	0	0
<i>Other-Residential</i>	0	0	0	0	0
<i>Single Family</i>	0	0	0	0	0
<i>Hotels</i>	0	0	0	0	0
<i>Commercial</i>	0	0	0	0	0
<i>Commuting</i>	0	0	0	0	0
<i>Industrial</i>	0	0	0	0	0
<b>Total Casualties - 2pm</b>	<b>0</b>	<b>0</b>	<b>0</b>	<b>0</b>	<b>0</b>

	Severity 1	Severity 2	Severity 3	Severity 4	Total
<b>Casualties - 5pm</b>					
<i>Industrial</i>	0	0	0	0	0
<i>Other-Residential</i>	0	0	0	0	0
<i>Commuting</i>	0	0	0	0	0
<i>Commercial</i>	0	0	0	0	0
<i>Single Family</i>	0	0	0	0	0
<i>Educational</i>	0	0	0	0	0
<i>Hotels</i>	0	0	0	0	0
<b>Total Casualties - 5pm</b>	<b>0</b>	<b>0</b>	<b>0</b>	<b>0</b>	<b>0</b>

#### Amador

	Severity 1	Severity 2	Severity 3	Severity 4	Total
<b>Casualties - 2am</b>					
<i>Commercial</i>	0	0	0	0	0

	Injury Severity Level				Total
	Severity 1	Severity 2	Severity 3	Severity 4	
<b>California</b>					
<b>Amador</b>					
<b>Casualties - 2am</b>					
Other-Residential	0	0	0	0	0
Commuting	0	0	0	0	0
Educational	0	0	0	0	0
Single Family	0	0	0	0	0
Hotels	0	0	0	0	0
Industrial	0	0	0	0	0
<b>Total Casualties - 2am</b>	<b>0</b>	<b>0</b>	<b>0</b>	<b>0</b>	<b>0</b>
<b>Casualties - 2pm</b>					
Single Family	0	0	0	0	0
Hotels	0	0	0	0	0
Educational	0	0	0	0	0
Commuting	0	0	0	0	0
Commercial	0	0	0	0	0
Other-Residential	0	0	0	0	0
Industrial	0	0	0	0	0
<b>Total Casualties - 2pm</b>	<b>0</b>	<b>0</b>	<b>0</b>	<b>0</b>	<b>0</b>
<b>Casualties - 5pm</b>					
Commercial	0	0	0	0	0
Commuting	0	0	0	0	0
Other-Residential	0	0	0	0	0
Single Family	0	0	0	0	0
Educational	0	0	0	0	0
Hotels	0	0	0	0	0
Industrial	0	0	0	0	0
<b>Total Casualties - 5pm</b>	<b>0</b>	<b>0</b>	<b>0</b>	<b>0</b>	<b>0</b>
<b>Butte</b>					
<b>Casualties - 2am</b>					
Industrial	0	0	0	0	0
Commercial	0	0	0	0	0
Other-Residential	0	0	0	0	0
Single Family	0	0	0	0	0
Commuting	0	0	0	0	0
Educational	0	0	0	0	0
Hotels	0	0	0	0	0
<b>Total Casualties - 2am</b>	<b>0</b>	<b>0</b>	<b>0</b>	<b>0</b>	<b>0</b>
<b>Casualties - 2pm</b>					
Single Family	0	0	0	0	0
Educational	0	0	0	0	0
Commuting	0	0	0	0	0
Other-Residential	0	0	0	0	0
Hotels	0	0	0	0	0

	Injury Severity Level				Total
	Severity 1	Severity 2	Severity 3	Severity 4	
<b>California</b>					
<b>Butte</b>					
<b>Casualties - 2pm</b>					
Commercial	0	0	0	0	0
Industrial	0	0	0	0	0
<b>Total Casualties - 2pm</b>	<b>0</b>	<b>0</b>	<b>0</b>	<b>0</b>	<b>0</b>
<b>Casualties - 5pm</b>					
Industrial	0	0	0	0	0
Other-Residential	0	0	0	0	0
Single Family	0	0	0	0	0
Commercial	0	0	0	0	0
Commuting	0	0	0	0	0
Hotels	0	0	0	0	0
Educational	0	0	0	0	0
<b>Total Casualties - 5pm</b>	<b>0</b>	<b>0</b>	<b>0</b>	<b>0</b>	<b>0</b>
<b>Calaveras</b>					
<b>Casualties - 2am</b>					
Other-Residential	0	0	0	0	0
Commuting	0	0	0	0	0
Commercial	0	0	0	0	0
Single Family	0	0	0	0	0
Hotels	0	0	0	0	0
Educational	0	0	0	0	0
Industrial	0	0	0	0	0
<b>Total Casualties - 2am</b>	<b>0</b>	<b>0</b>	<b>0</b>	<b>0</b>	<b>0</b>
<b>Casualties - 2pm</b>					
Hotels	0	0	0	0	0
Single Family	0	0	0	0	0
Educational	0	0	0	0	0
Commuting	0	0	0	0	0
Commercial	0	0	0	0	0
Industrial	0	0	0	0	0
Other-Residential	0	0	0	0	0
<b>Total Casualties - 2pm</b>	<b>0</b>	<b>0</b>	<b>0</b>	<b>0</b>	<b>0</b>
<b>Casualties - 5pm</b>					
Industrial	0	0	0	0	0
Commercial	0	0	0	0	0
Other-Residential	0	0	0	0	0
Educational	0	0	0	0	0
Hotels	0	0	0	0	0
Commuting	0	0	0	0	0
Single Family	0	0	0	0	0
<b>Total Casualties - 5pm</b>	<b>0</b>	<b>0</b>	<b>0</b>	<b>0</b>	<b>0</b>

	Injury Severity Level				Total
	Severity 1	Severity 2	Severity 3	Severity 4	
<b>California</b>					
<b>Colusa</b>					
<b>Casualties - 2am</b>					
<i>Other-Residential</i>	0	0	0	0	0
<i>Industrial</i>	0	0	0	0	0
<i>Single Family</i>	0	0	0	0	0
<i>Commercial</i>	0	0	0	0	0
<i>Educational</i>	0	0	0	0	0
<i>Commuting</i>	0	0	0	0	0
<i>Hotels</i>	0	0	0	0	0
<b>Total Casualties - 2am</b>	<b>0</b>	<b>0</b>	<b>0</b>	<b>0</b>	<b>0</b>
<b>Casualties - 2pm</b>					
<i>Hotels</i>	0	0	0	0	0
<i>Single Family</i>	0	0	0	0	0
<i>Educational</i>	0	0	0	0	0
<i>Commercial</i>	0	0	0	0	0
<i>Commuting</i>	0	0	0	0	0
<i>Other-Residential</i>	0	0	0	0	0
<i>Industrial</i>	0	0	0	0	0
<b>Total Casualties - 2pm</b>	<b>0</b>	<b>0</b>	<b>0</b>	<b>0</b>	<b>0</b>
<b>Casualties - 5pm</b>					
<i>Industrial</i>	0	0	0	0	0
<i>Commercial</i>	0	0	0	0	0
<i>Other-Residential</i>	0	0	0	0	0
<i>Commuting</i>	0	0	0	0	0
<i>Single Family</i>	0	0	0	0	0
<i>Educational</i>	0	0	0	0	0
<i>Hotels</i>	0	0	0	0	0
<b>Total Casualties - 5pm</b>	<b>0</b>	<b>0</b>	<b>0</b>	<b>0</b>	<b>0</b>
<b>Contra Costa</b>					
<b>Casualties - 2am</b>					
<i>Educational</i>	0	0	0	0	0
<i>Hotels</i>	0	0	0	0	0
<i>Industrial</i>	6	1	0	0	7
<i>Other-Residential</i>	133	14	1	2	150
<i>Single Family</i>	235	10	0	0	245
<i>Commercial</i>	7	1	0	0	8
<i>Commuting</i>	0	0	0	0	1
<b>Total Casualties - 2am</b>	<b>381</b>	<b>27</b>	<b>1</b>	<b>2</b>	<b>412</b>
<b>Casualties - 2pm</b>					
<i>Other-Residential</i>	44	5	0	1	49
<i>Industrial</i>	45	7	1	1	53
<i>Hotels</i>	0	0	0	0	0
<i>Single Family</i>	69	3	0	0	72

## Injury Severity Level

	Severity 1	Severity 2	Severity 3	Severity 4	Total
--	------------	------------	------------	------------	-------

### California

#### Contra Costa

##### Casualties - 2pm

<i>Educational</i>	108	14	1	2	126
<i>Commuting</i>	1	2	3	1	6
<i>Commercial</i>	478	77	8	15	578
<b>Total Casualties - 2pm</b>	<b>744</b>	<b>107</b>	<b>13</b>	<b>20</b>	<b>884</b>

##### Casualties - 5pm

<i>Educational</i>	13	2	0	0	15
<i>Commuting</i>	22	34	52	10	119
<i>Single Family</i>	86	4	0	0	90
<i>Hotels</i>	0	0	0	0	0
<i>Industrial</i>	28	4	0	1	33
<i>Other-Residential</i>	50	5	0	1	56
<i>Commercial</i>	331	52	5	10	398
<b>Total Casualties - 5pm</b>	<b>529</b>	<b>101</b>	<b>58</b>	<b>22</b>	<b>711</b>

#### El Dorado

##### Casualties - 2am

<i>Commuting</i>	0	0	0	0	0
<i>Educational</i>	0	0	0	0	0
<i>Single Family</i>	0	0	0	0	0
<i>Hotels</i>	0	0	0	0	0
<i>Other-Residential</i>	0	0	0	0	0
<i>Industrial</i>	0	0	0	0	0
<i>Commercial</i>	0	0	0	0	0
<b>Total Casualties - 2am</b>	<b>0</b>	<b>0</b>	<b>0</b>	<b>0</b>	<b>0</b>

##### Casualties - 2pm

<i>Industrial</i>	0	0	0	0	0
<i>Other-Residential</i>	0	0	0	0	0
<i>Single Family</i>	0	0	0	0	0
<i>Hotels</i>	0	0	0	0	0
<i>Educational</i>	0	0	0	0	0
<i>Commuting</i>	0	0	0	0	0
<i>Commercial</i>	0	0	0	0	0
<b>Total Casualties - 2pm</b>	<b>0</b>	<b>0</b>	<b>0</b>	<b>0</b>	<b>0</b>

##### Casualties - 5pm

<i>Commercial</i>	0	0	0	0	0
<i>Commuting</i>	0	0	0	0	0
<i>Single Family</i>	0	0	0	0	0
<i>Educational</i>	0	0	0	0	0
<i>Hotels</i>	0	0	0	0	0
<i>Industrial</i>	0	0	0	0	0
<i>Other-Residential</i>	0	0	0	0	0

	Injury Severity Level				Total
	Severity 1	Severity 2	Severity 3	Severity 4	
<b>California</b>					
<b>El Dorado</b>					
<b>Total Casualties - 5pm</b>	<b>0</b>	<b>0</b>	<b>0</b>	<b>0</b>	<b>0</b>
<b>Fresno</b>					
<b>Casualties - 2am</b>					
<i>Hotels</i>	0	0	0	0	0
<i>Educational</i>	0	0	0	0	0
<i>Industrial</i>	0	0	0	0	0
<i>Commercial</i>	0	0	0	0	0
<i>Other-Residential</i>	1	0	0	0	1
<i>Single Family</i>	1	0	0	0	1
<i>Commuting</i>	0	0	0	0	0
<b>Total Casualties - 2am</b>	<b>1</b>	<b>0</b>	<b>0</b>	<b>0</b>	<b>1</b>
<b>Casualties - 2pm</b>					
<i>Commercial</i>	2	0	0	0	2
<i>Other-Residential</i>	0	0	0	0	0
<i>Industrial</i>	0	0	0	0	0
<i>Single Family</i>	0	0	0	0	0
<i>Hotels</i>	0	0	0	0	0
<i>Commuting</i>	0	0	0	0	0
<i>Educational</i>	0	0	0	0	0
<b>Total Casualties - 2pm</b>	<b>2</b>	<b>0</b>	<b>0</b>	<b>0</b>	<b>2</b>
<b>Casualties - 5pm</b>					
<i>Educational</i>	0	0	0	0	0
<i>Commuting</i>	0	0	0	0	0
<i>Hotels</i>	0	0	0	0	0
<i>Industrial</i>	0	0	0	0	0
<i>Single Family</i>	0	0	0	0	0
<i>Other-Residential</i>	0	0	0	0	0
<i>Commercial</i>	1	0	0	0	1
<b>Total Casualties - 5pm</b>	<b>2</b>	<b>0</b>	<b>0</b>	<b>0</b>	<b>2</b>
<b>Glenn</b>					
<b>Casualties - 2am</b>					
<i>Hotels</i>	0	0	0	0	0
<i>Educational</i>	0	0	0	0	0
<i>Industrial</i>	0	0	0	0	0
<i>Other-Residential</i>	0	0	0	0	0
<i>Commercial</i>	0	0	0	0	0
<i>Commuting</i>	0	0	0	0	0
<i>Single Family</i>	0	0	0	0	0
<b>Total Casualties - 2am</b>	<b>0</b>	<b>0</b>	<b>0</b>	<b>0</b>	<b>0</b>
<b>Casualties - 2pm</b>					
<i>Industrial</i>	0	0	0	0	0

	Injury Severity Level				Total
	Severity 1	Severity 2	Severity 3	Severity 4	
<b>California</b>					
<b>Glenn</b>					
<b>Casualties - 2pm</b>					
<i>Other-Residential</i>	0	0	0	0	0
<i>Commuting</i>	0	0	0	0	0
<i>Commercial</i>	0	0	0	0	0
<i>Hotels</i>	0	0	0	0	0
<i>Single Family</i>	0	0	0	0	0
<i>Educational</i>	0	0	0	0	0
<b>Total Casualties - 2pm</b>	<b>0</b>	<b>0</b>	<b>0</b>	<b>0</b>	<b>0</b>
<b>Casualties - 5pm</b>					
<i>Educational</i>	0	0	0	0	0
<i>Commuting</i>	0	0	0	0	0
<i>Hotels</i>	0	0	0	0	0
<i>Single Family</i>	0	0	0	0	0
<i>Industrial</i>	0	0	0	0	0
<i>Commercial</i>	0	0	0	0	0
<i>Other-Residential</i>	0	0	0	0	0
<b>Total Casualties - 5pm</b>	<b>0</b>	<b>0</b>	<b>0</b>	<b>0</b>	<b>0</b>
<b>Kern</b>					
<b>Casualties - 2am</b>					
<i>Commercial</i>	0	0	0	0	0
<i>Commuting</i>	0	0	0	0	0
<i>Educational</i>	0	0	0	0	0
<i>Single Family</i>	0	0	0	0	0
<i>Other-Residential</i>	0	0	0	0	0
<i>Hotels</i>	0	0	0	0	0
<i>Industrial</i>	0	0	0	0	0
<b>Total Casualties - 2am</b>	<b>0</b>	<b>0</b>	<b>0</b>	<b>0</b>	<b>0</b>
<b>Casualties - 2pm</b>					
<i>Educational</i>	0	0	0	0	0
<i>Commuting</i>	0	0	0	0	0
<i>Single Family</i>	0	0	0	0	0
<i>Hotels</i>	0	0	0	0	0
<i>Other-Residential</i>	0	0	0	0	0
<i>Commercial</i>	0	0	0	0	0
<i>Industrial</i>	0	0	0	0	0
<b>Total Casualties - 2pm</b>	<b>0</b>	<b>0</b>	<b>0</b>	<b>0</b>	<b>0</b>
<b>Casualties - 5pm</b>					
<i>Single Family</i>	0	0	0	0	0
<i>Commercial</i>	0	0	0	0	0
<i>Other-Residential</i>	0	0	0	0	0
<i>Commuting</i>	0	0	0	0	0
<i>Educational</i>	0	0	0	0	0

	Injury Severity Level				Total
	Severity 1	Severity 2	Severity 3	Severity 4	
<b>California</b>					
<b>Kern</b>					
<b>Casualties - 5pm</b>					
<i>Hotels</i>	0	0	0	0	0
<i>Industrial</i>	0	0	0	0	0
<b>Total Casualties - 5pm</b>	<b>0</b>	<b>0</b>	<b>0</b>	<b>0</b>	<b>0</b>
<b>Kings</b>					
<b>Casualties - 2am</b>					
<i>Industrial</i>	0	0	0	0	0
<i>Other-Residential</i>	0	0	0	0	0
<i>Educational</i>	0	0	0	0	0
<i>Commuting</i>	0	0	0	0	0
<i>Commercial</i>	0	0	0	0	0
<i>Single Family</i>	0	0	0	0	0
<i>Hotels</i>	0	0	0	0	0
<b>Total Casualties - 2am</b>	<b>0</b>	<b>0</b>	<b>0</b>	<b>0</b>	<b>0</b>
<b>Casualties - 2pm</b>					
<i>Single Family</i>	0	0	0	0	0
<i>Other-Residential</i>	0	0	0	0	0
<i>Commercial</i>	0	0	0	0	0
<i>Educational</i>	0	0	0	0	0
<i>Commuting</i>	0	0	0	0	0
<i>Hotels</i>	0	0	0	0	0
<i>Industrial</i>	0	0	0	0	0
<b>Total Casualties - 2pm</b>	<b>0</b>	<b>0</b>	<b>0</b>	<b>0</b>	<b>0</b>
<b>Casualties - 5pm</b>					
<i>Single Family</i>	0	0	0	0	0
<i>Commercial</i>	0	0	0	0	0
<i>Commuting</i>	0	0	0	0	0
<i>Other-Residential</i>	0	0	0	0	0
<i>Educational</i>	0	0	0	0	0
<i>Hotels</i>	0	0	0	0	0
<i>Industrial</i>	0	0	0	0	0
<b>Total Casualties - 5pm</b>	<b>0</b>	<b>0</b>	<b>0</b>	<b>0</b>	<b>0</b>
<b>Lake</b>					
<b>Casualties - 2am</b>					
<i>Hotels</i>	0	0	0	0	0
<i>Industrial</i>	0	0	0	0	0
<i>Other-Residential</i>	0	0	0	0	0
<i>Commuting</i>	0	0	0	0	0
<i>Educational</i>	0	0	0	0	0
<i>Single Family</i>	0	0	0	0	0
<i>Commercial</i>	0	0	0	0	0

	Injury Severity Level				Total
	Severity 1	Severity 2	Severity 3	Severity 4	
<b>California</b>					
<b>Lake</b>					
<b>Total Casualties - 2am</b>	<b>0</b>	<b>0</b>	<b>0</b>	<b>0</b>	<b>0</b>
<b>Casualties - 2pm</b>					
Industrial	0	0	0	0	0
Single Family	0	0	0	0	0
Commercial	0	0	0	0	0
Other-Residential	0	0	0	0	0
Hotels	0	0	0	0	0
Educational	0	0	0	0	0
Commuting	0	0	0	0	0
<b>Total Casualties - 2pm</b>	<b>0</b>	<b>0</b>	<b>0</b>	<b>0</b>	<b>0</b>
<b>Casualties - 5pm</b>					
Other-Residential	0	0	0	0	0
Industrial	0	0	0	0	0
Commercial	0	0	0	0	0
Educational	0	0	0	0	0
Commuting	0	0	0	0	0
Single Family	0	0	0	0	0
Hotels	0	0	0	0	0
<b>Total Casualties - 5pm</b>	<b>0</b>	<b>0</b>	<b>0</b>	<b>0</b>	<b>0</b>
<b>Madera</b>					
<b>Casualties - 2am</b>					
Hotels	0	0	0	0	0
Educational	0	0	0	0	0
Single Family	0	0	0	0	0
Commuting	0	0	0	0	0
Industrial	0	0	0	0	0
Commercial	0	0	0	0	0
Other-Residential	0	0	0	0	0
<b>Total Casualties - 2am</b>	<b>0</b>	<b>0</b>	<b>0</b>	<b>0</b>	<b>0</b>
<b>Casualties - 2pm</b>					
Industrial	0	0	0	0	0
Commercial	0	0	0	0	0
Other-Residential	0	0	0	0	0
Commuting	0	0	0	0	0
Single Family	0	0	0	0	0
Hotels	0	0	0	0	0
Educational	0	0	0	0	0
<b>Total Casualties - 2pm</b>	<b>0</b>	<b>0</b>	<b>0</b>	<b>0</b>	<b>0</b>
<b>Casualties - 5pm</b>					
Industrial	0	0	0	0	0
Commercial	0	0	0	0	0

	Injury Severity Level				Total
	Severity 1	Severity 2	Severity 3	Severity 4	
<b>California</b>					
<b>Madera</b>					
<b>Casualties - 5pm</b>					
Single Family	0	0	0	0	0
Educational	0	0	0	0	0
Other-Residential	0	0	0	0	0
Commuting	0	0	0	0	0
Hotels	0	0	0	0	0
<b>Total Casualties - 5pm</b>	<b>0</b>	<b>0</b>	<b>0</b>	<b>0</b>	<b>0</b>
<b>Marin</b>					
<b>Casualties - 2am</b>					
Commercial	0	0	0	0	0
Commuting	0	0	0	0	0
Other-Residential	1	0	0	0	1
Educational	0	0	0	0	0
Single Family	2	0	0	0	2
Hotels	0	0	0	0	0
Industrial	0	0	0	0	0
<b>Total Casualties - 2am</b>	<b>4</b>	<b>0</b>	<b>0</b>	<b>0</b>	<b>4</b>
<b>Casualties - 2pm</b>					
Hotels	0	0	0	0	0
Commuting	0	0	0	0	0
Educational	0	0	0	0	0
Industrial	1	0	0	0	1
Other-Residential	0	0	0	0	0
Commercial	4	0	0	0	5
Single Family	1	0	0	0	1
<b>Total Casualties - 2pm</b>	<b>7</b>	<b>0</b>	<b>0</b>	<b>0</b>	<b>7</b>
<b>Casualties - 5pm</b>					
Commuting	0	0	0	0	0
Commercial	3	0	0	0	3
Other-Residential	1	0	0	0	1
Single Family	1	0	0	0	1
Industrial	0	0	0	0	1
Educational	0	0	0	0	0
Hotels	0	0	0	0	0
<b>Total Casualties - 5pm</b>	<b>5</b>	<b>0</b>	<b>0</b>	<b>0</b>	<b>5</b>
<b>Mariposa</b>					
<b>Casualties - 2am</b>					
Commuting	0	0	0	0	0
Single Family	0	0	0	0	0
Commercial	0	0	0	0	0
Hotels	0	0	0	0	0
Educational	0	0	0	0	0

	Injury Severity Level				Total
	Severity 1	Severity 2	Severity 3	Severity 4	
<b>California</b>					
<b>Mariposa</b>					
<b>Casualties - 2am</b>					
<i>Industrial</i>	0	0	0	0	0
<i>Other-Residential</i>	0	0	0	0	0
<b>Total Casualties - 2am</b>	<b>0</b>	<b>0</b>	<b>0</b>	<b>0</b>	<b>0</b>
<b>Casualties - 2pm</b>					
<i>Hotels</i>	0	0	0	0	0
<i>Industrial</i>	0	0	0	0	0
<i>Commercial</i>	0	0	0	0	0
<i>Other-Residential</i>	0	0	0	0	0
<i>Educational</i>	0	0	0	0	0
<i>Commuting</i>	0	0	0	0	0
<i>Single Family</i>	0	0	0	0	0
<b>Total Casualties - 2pm</b>	<b>0</b>	<b>0</b>	<b>0</b>	<b>0</b>	<b>0</b>
<b>Casualties - 5pm</b>					
<i>Other-Residential</i>	0	0	0	0	0
<i>Educational</i>	0	0	0	0	0
<i>Commuting</i>	0	0	0	0	0
<i>Hotels</i>	0	0	0	0	0
<i>Single Family</i>	0	0	0	0	0
<i>Commercial</i>	0	0	0	0	0
<i>Industrial</i>	0	0	0	0	0
<b>Total Casualties - 5pm</b>	<b>0</b>	<b>0</b>	<b>0</b>	<b>0</b>	<b>0</b>
<b>Mendocino</b>					
<b>Casualties - 2am</b>					
<i>Educational</i>	0	0	0	0	0
<i>Hotels</i>	0	0	0	0	0
<i>Commuting</i>	0	0	0	0	0
<i>Industrial</i>	0	0	0	0	0
<i>Other-Residential</i>	0	0	0	0	0
<i>Single Family</i>	0	0	0	0	0
<i>Commercial</i>	0	0	0	0	0
<b>Total Casualties - 2am</b>	<b>0</b>	<b>0</b>	<b>0</b>	<b>0</b>	<b>0</b>
<b>Casualties - 2pm</b>					
<i>Industrial</i>	0	0	0	0	0
<i>Other-Residential</i>	0	0	0	0	0
<i>Commercial</i>	0	0	0	0	0
<i>Single Family</i>	0	0	0	0	0
<i>Commuting</i>	0	0	0	0	0
<i>Hotels</i>	0	0	0	0	0
<i>Educational</i>	0	0	0	0	0
<b>Total Casualties - 2pm</b>	<b>0</b>	<b>0</b>	<b>0</b>	<b>0</b>	<b>0</b>

	Injury Severity Level				Total
	Severity 1	Severity 2	Severity 3	Severity 4	
<b>California</b>					
<b>Mendocino</b>					
<b>Casualties - 5pm</b>					
<i>Hotels</i>	0	0	0	0	0
<i>Single Family</i>	0	0	0	0	0
<i>Educational</i>	0	0	0	0	0
<i>Commuting</i>	0	0	0	0	0
<i>Commercial</i>	0	0	0	0	0
<i>Other-Residential</i>	0	0	0	0	0
<i>Industrial</i>	0	0	0	0	0
<b>Total Casualties - 5pm</b>	<b>0</b>	<b>0</b>	<b>0</b>	<b>0</b>	<b>0</b>
<b>Merced</b>					
<b>Casualties - 2am</b>					
<i>Hotels</i>	0	0	0	0	0
<i>Industrial</i>	0	0	0	0	0
<i>Commercial</i>	0	0	0	0	0
<i>Single Family</i>	2	0	0	0	2
<i>Other-Residential</i>	1	0	0	0	1
<i>Educational</i>	0	0	0	0	0
<i>Commuting</i>	0	0	0	0	0
<b>Total Casualties - 2am</b>	<b>3</b>	<b>0</b>	<b>0</b>	<b>0</b>	<b>3</b>
<b>Casualties - 2pm</b>					
<i>Other-Residential</i>	0	0	0	0	0
<i>Industrial</i>	0	0	0	0	0
<i>Commercial</i>	10	1	0	0	11
<i>Commuting</i>	0	0	0	0	0
<i>Hotels</i>	0	0	0	0	0
<i>Educational</i>	1	0	0	0	1
<i>Single Family</i>	1	0	0	0	1
<b>Total Casualties - 2pm</b>	<b>12</b>	<b>1</b>	<b>0</b>	<b>0</b>	<b>13</b>
<b>Casualties - 5pm</b>					
<i>Industrial</i>	0	0	0	0	0
<i>Hotels</i>	0	0	0	0	0
<i>Educational</i>	0	0	0	0	0
<i>Commuting</i>	0	0	0	0	0
<i>Single Family</i>	1	0	0	0	1
<i>Commercial</i>	8	1	0	0	9
<i>Other-Residential</i>	0	0	0	0	0
<b>Total Casualties - 5pm</b>	<b>9</b>	<b>1</b>	<b>0</b>	<b>0</b>	<b>10</b>
<b>Monterey</b>					
<b>Casualties - 2am</b>					
<i>Other-Residential</i>	30	2	0	0	32
<i>Commuting</i>	0	0	0	0	0
<i>Commercial</i>	0	0	0	0	1

	Injury Severity Level				Total
	Severity 1	Severity 2	Severity 3	Severity 4	
<b>California</b>					
<b>Monterey</b>					
<b>Casualties - 2am</b>					
Single Family	26	0	0	0	26
Hotels	0	0	0	0	0
Educational	0	0	0	0	0
Industrial	1	0	0	0	1
<b>Total Casualties - 2am</b>	<b>57</b>	<b>3</b>	<b>0</b>	<b>0</b>	<b>60</b>
<b>Casualties - 2pm</b>					
Commuting	0	0	0	0	0
Commercial	37	4	0	0	41
Single Family	7	0	0	0	7
Hotels	0	0	0	0	0
Educational	10	1	0	0	11
Industrial	4	0	0	0	5
Other-Residential	9	1	0	0	9
<b>Total Casualties - 2pm</b>	<b>68</b>	<b>6</b>	<b>0</b>	<b>0</b>	<b>74</b>
<b>Casualties - 5pm</b>					
Commercial	28	3	0	0	31
Other-Residential	11	1	0	0	12
Industrial	3	0	0	0	3
Hotels	0	0	0	0	0
Educational	2	0	0	0	2
Commuting	1	2	3	1	6
Single Family	9	0	0	0	9
<b>Total Casualties - 5pm</b>	<b>54</b>	<b>6</b>	<b>3</b>	<b>1</b>	<b>64</b>
<b>Napa</b>					
<b>Casualties - 2am</b>					
Commercial	0	0	0	0	0
Other-Residential	1	0	0	0	1
Educational	0	0	0	0	0
Single Family	1	0	0	0	1
Commuting	0	0	0	0	0
Hotels	0	0	0	0	0
Industrial	0	0	0	0	0
<b>Total Casualties - 2am</b>	<b>2</b>	<b>0</b>	<b>0</b>	<b>0</b>	<b>2</b>
<b>Casualties - 2pm</b>					
Educational	1	0	0	0	1
Hotels	0	0	0	0	0
Commuting	0	0	0	0	0
Industrial	0	0	0	0	0
Other-Residential	0	0	0	0	0
Single Family	0	0	0	0	0
Commercial	2	0	0	0	2

	Injury Severity Level				Total
	Severity 1	Severity 2	Severity 3	Severity 4	
<b>California</b>					
<b>Napa</b>					
<b>Total Casualties - 2pm</b>	<b>4</b>	<b>0</b>	<b>0</b>	<b>0</b>	<b>4</b>
<b>Casualties - 5pm</b>					
<i>Commercial</i>	1	0	0	0	1
<i>Single Family</i>	0	0	0	0	0
<i>Other-Residential</i>	0	0	0	0	0
<i>Commuting</i>	0	0	0	0	0
<i>Industrial</i>	0	0	0	0	0
<i>Educational</i>	0	0	0	0	0
<i>Hotels</i>	0	0	0	0	0
<b>Total Casualties - 5pm</b>	<b>3</b>	<b>0</b>	<b>0</b>	<b>0</b>	<b>3</b>
<b>Nevada</b>					
<b>Casualties - 2am</b>					
<i>Single Family</i>	0	0	0	0	0
<i>Commercial</i>	0	0	0	0	0
<i>Commuting</i>	0	0	0	0	0
<i>Hotels</i>	0	0	0	0	0
<i>Educational</i>	0	0	0	0	0
<i>Industrial</i>	0	0	0	0	0
<i>Other-Residential</i>	0	0	0	0	0
<b>Total Casualties - 2am</b>	<b>0</b>	<b>0</b>	<b>0</b>	<b>0</b>	<b>0</b>
<b>Casualties - 2pm</b>					
<i>Hotels</i>	0	0	0	0	0
<i>Industrial</i>	0	0	0	0	0
<i>Commercial</i>	0	0	0	0	0
<i>Single Family</i>	0	0	0	0	0
<i>Other-Residential</i>	0	0	0	0	0
<i>Educational</i>	0	0	0	0	0
<i>Commuting</i>	0	0	0	0	0
<b>Total Casualties - 2pm</b>	<b>0</b>	<b>0</b>	<b>0</b>	<b>0</b>	<b>0</b>
<b>Casualties - 5pm</b>					
<i>Commuting</i>	0	0	0	0	0
<i>Hotels</i>	0	0	0	0	0
<i>Other-Residential</i>	0	0	0	0	0
<i>Educational</i>	0	0	0	0	0
<i>Single Family</i>	0	0	0	0	0
<i>Commercial</i>	0	0	0	0	0
<i>Industrial</i>	0	0	0	0	0
<b>Total Casualties - 5pm</b>	<b>0</b>	<b>0</b>	<b>0</b>	<b>0</b>	<b>0</b>
<b>Placer</b>					
<b>Casualties - 2am</b>					
<i>Hotels</i>	0	0	0	0	0

	Injury Severity Level				Total
	Severity 1	Severity 2	Severity 3	Severity 4	
<b>California</b>					
<b>Placer</b>					
<b>Casualties - 2am</b>					
<i>Educational</i>	0	0	0	0	0
<i>Industrial</i>	0	0	0	0	0
<i>Other-Residential</i>	0	0	0	0	0
<i>Commercial</i>	0	0	0	0	0
<i>Single Family</i>	0	0	0	0	0
<i>Commuting</i>	0	0	0	0	0
<b>Total Casualties - 2am</b>	<b>0</b>	<b>0</b>	<b>0</b>	<b>0</b>	<b>0</b>
<b>Casualties - 2pm</b>					
<i>Other-Residential</i>	0	0	0	0	0
<i>Industrial</i>	0	0	0	0	0
<i>Commercial</i>	0	0	0	0	0
<i>Single Family</i>	0	0	0	0	0
<i>Educational</i>	0	0	0	0	0
<i>Commuting</i>	0	0	0	0	0
<i>Hotels</i>	0	0	0	0	0
<b>Total Casualties - 2pm</b>	<b>0</b>	<b>0</b>	<b>0</b>	<b>0</b>	<b>0</b>
<b>Casualties - 5pm</b>					
<i>Single Family</i>	0	0	0	0	0
<i>Hotels</i>	0	0	0	0	0
<i>Commuting</i>	0	0	0	0	0
<i>Educational</i>	0	0	0	0	0
<i>Commercial</i>	0	0	0	0	0
<i>Industrial</i>	0	0	0	0	0
<i>Other-Residential</i>	0	0	0	0	0
<b>Total Casualties - 5pm</b>	<b>0</b>	<b>0</b>	<b>0</b>	<b>0</b>	<b>0</b>
<b>Sacramento</b>					
<b>Casualties - 2am</b>					
<i>Industrial</i>	0	0	0	0	0
<i>Other-Residential</i>	2	0	0	0	2
<i>Commercial</i>	0	0	0	0	0
<i>Single Family</i>	2	0	0	0	2
<i>Hotels</i>	0	0	0	0	0
<i>Commuting</i>	0	0	0	0	0
<i>Educational</i>	0	0	0	0	0
<b>Total Casualties - 2am</b>	<b>3</b>	<b>0</b>	<b>0</b>	<b>0</b>	<b>3</b>
<b>Casualties - 2pm</b>					
<i>Other-Residential</i>	1	0	0	0	1
<i>Commuting</i>	0	0	0	0	0
<i>Single Family</i>	0	0	0	0	0
<i>Commercial</i>	6	0	0	0	6
<i>Hotels</i>	0	0	0	0	0

	Injury Severity Level				Total
	Severity 1	Severity 2	Severity 3	Severity 4	
<b>California</b>					
<b>Sacramento</b>					
<b>Casualties - 2pm</b>					
<i>Educational</i>	0	0	0	0	0
<i>Industrial</i>	0	0	0	0	0
<b>Total Casualties - 2pm</b>	<b>7</b>	<b>0</b>	<b>0</b>	<b>0</b>	<b>8</b>
<b>Casualties - 5pm</b>					
<i>Industrial</i>	0	0	0	0	0
<i>Educational</i>	0	0	0	0	0
<i>Hotels</i>	0	0	0	0	0
<i>Commercial</i>	3	0	0	0	3
<i>Commuting</i>	0	0	0	0	0
<i>Other-Residential</i>	1	0	0	0	1
<i>Single Family</i>	1	0	0	0	1
<b>Total Casualties - 5pm</b>	<b>5</b>	<b>0</b>	<b>0</b>	<b>0</b>	<b>5</b>
<b>San Benito</b>					
<b>Casualties - 2am</b>					
<i>Other-Residential</i>	21	4	0	1	26
<i>Commercial</i>	1	0	0	0	2
<i>Commuting</i>	0	0	0	0	0
<i>Hotels</i>	0	0	0	0	0
<i>Educational</i>	0	0	0	0	0
<i>Single Family</i>	34	2	0	0	36
<i>Industrial</i>	1	0	0	0	2
<b>Total Casualties - 2am</b>	<b>57</b>	<b>7</b>	<b>1</b>	<b>1</b>	<b>66</b>
<b>Casualties - 2pm</b>					
<i>Hotels</i>	0	0	0	0	0
<i>Educational</i>	102	31	5	10	149
<i>Industrial</i>	9	2	0	1	12
<i>Other-Residential</i>	6	1	0	0	7
<i>Commercial</i>	106	30	5	9	150
<i>Commuting</i>	0	0	0	0	1
<i>Single Family</i>	10	1	0	0	11
<b>Total Casualties - 2pm</b>	<b>234</b>	<b>65</b>	<b>11</b>	<b>20</b>	<b>330</b>
<b>Casualties - 5pm</b>					
<i>Commuting</i>	3	4	6	1	14
<i>Commercial</i>	80	23	4	7	113
<i>Other-Residential</i>	8	2	0	0	9
<i>Single Family</i>	13	1	0	0	14
<i>Industrial</i>	6	1	0	0	8
<i>Educational</i>	14	4	1	1	21
<i>Hotels</i>	0	0	0	0	0
<b>Total Casualties - 5pm</b>	<b>123</b>	<b>35</b>	<b>11</b>	<b>10</b>	<b>179</b>

## Injury Severity Level

	Severity 1	Severity 2	Severity 3	Severity 4	Total
--	------------	------------	------------	------------	-------

### California

#### San Francisco

##### Casualties - 2am

<i>Industrial</i>	2	0	0	0	2
<i>Hotels</i>	1	0	0	0	1
<i>Commercial</i>	5	1	0	0	6
<i>Other-Residential</i>	189	17	0	1	207
<i>Commuting</i>	0	0	0	0	0
<i>Educational</i>	0	0	0	0	0
<i>Single Family</i>	33	2	0	0	35
<b>Total Casualties - 2am</b>	<b>231</b>	<b>20</b>	<b>0</b>	<b>1</b>	<b>252</b>

##### Casualties - 2pm

<i>Commercial</i>	283	27	1	1	312
<i>Industrial</i>	16	2	0	0	18
<i>Other-Residential</i>	61	6	0	0	67
<i>Single Family</i>	10	1	0	0	11
<i>Hotels</i>	0	0	0	0	0
<i>Commuting</i>	0	0	0	0	0
<i>Educational</i>	36	3	0	0	39
<b>Total Casualties - 2pm</b>	<b>407</b>	<b>38</b>	<b>1</b>	<b>1</b>	<b>447</b>

##### Casualties - 5pm

<i>Educational</i>	13	1	0	0	14
<i>Hotels</i>	0	0	0	0	0
<i>Industrial</i>	10	1	0	0	11
<i>Commuting</i>	0	0	0	0	1
<i>Commercial</i>	163	16	0	1	179
<i>Other-Residential</i>	74	7	0	0	82
<i>Single Family</i>	13	1	0	0	13
<b>Total Casualties - 5pm</b>	<b>273</b>	<b>26</b>	<b>1</b>	<b>1</b>	<b>301</b>

#### San Joaquin

##### Casualties - 2am

<i>Educational</i>	0	0	0	0	0
<i>Commuting</i>	0	0	0	0	0
<i>Hotels</i>	0	0	0	0	0
<i>Commercial</i>	0	0	0	0	0
<i>Single Family</i>	24	1	0	0	25
<i>Industrial</i>	0	0	0	0	0
<i>Other-Residential</i>	6	0	0	0	7
<b>Total Casualties - 2am</b>	<b>31</b>	<b>2</b>	<b>0</b>	<b>0</b>	<b>33</b>

##### Casualties - 2pm

<i>Industrial</i>	2	0	0	0	2
<i>Other-Residential</i>	2	0	0	0	2
<i>Educational</i>	2	0	0	0	2
<i>Single Family</i>	8	0	0	0	8

## Injury Severity Level

	Severity 1	Severity 2	Severity 3	Severity 4	Total
--	------------	------------	------------	------------	-------

### California

#### San Joaquin

##### Casualties - 2pm

<i>Hotels</i>	0	0	0	0	0
<i>Commuting</i>	0	0	0	0	0
<i>Commercial</i>	11	1	0	0	12
<b>Total Casualties - 2pm</b>	<b>26</b>	<b>1</b>	<b>0</b>	<b>0</b>	<b>27</b>

##### Casualties - 5pm

<i>Commuting</i>	0	0	0	0	0
<i>Single Family</i>	9	0	0	0	10
<i>Educational</i>	0	0	0	0	0
<i>Hotels</i>	0	0	0	0	0
<i>Industrial</i>	1	0	0	0	2
<i>Commercial</i>	7	0	0	0	8
<i>Other-Residential</i>	2	0	0	0	3
<b>Total Casualties - 5pm</b>	<b>21</b>	<b>1</b>	<b>0</b>	<b>0</b>	<b>22</b>

#### San Luis Obispo

##### Casualties - 2am

<i>Commercial</i>	0	0	0	0	0
<i>Other-Residential</i>	0	0	0	0	0
<i>Industrial</i>	0	0	0	0	0
<i>Single Family</i>	0	0	0	0	0
<i>Commuting</i>	0	0	0	0	0
<i>Educational</i>	0	0	0	0	0
<i>Hotels</i>	0	0	0	0	0
<b>Total Casualties - 2am</b>	<b>0</b>	<b>0</b>	<b>0</b>	<b>0</b>	<b>0</b>

##### Casualties - 2pm

<i>Single Family</i>	0	0	0	0	0
<i>Educational</i>	0	0	0	0	0
<i>Other-Residential</i>	0	0	0	0	0
<i>Hotels</i>	0	0	0	0	0
<i>Commuting</i>	0	0	0	0	0
<i>Commercial</i>	0	0	0	0	0
<i>Industrial</i>	0	0	0	0	0
<b>Total Casualties - 2pm</b>	<b>0</b>	<b>0</b>	<b>0</b>	<b>0</b>	<b>0</b>

##### Casualties - 5pm

<i>Industrial</i>	0	0	0	0	0
<i>Other-Residential</i>	0	0	0	0	0
<i>Commuting</i>	0	0	0	0	0
<i>Single Family</i>	0	0	0	0	0
<i>Commercial</i>	0	0	0	0	0
<i>Hotels</i>	0	0	0	0	0
<i>Educational</i>	0	0	0	0	0

	Injury Severity Level				Total
	Severity 1	Severity 2	Severity 3	Severity 4	
<b>California</b>					
<b>San Luis Obispo</b>					
<b>Total Casualties - 5pm</b>	<b>0</b>	<b>0</b>	<b>0</b>	<b>0</b>	<b>0</b>
<b>San Mateo</b>					
<b>Casualties - 2am</b>					
<i>Industrial</i>	1	0	0	0	1
<i>Other-Residential</i>	27	2	0	0	29
<i>Single Family</i>	26	0	0	0	27
<i>Commercial</i>	1	0	0	0	1
<i>Educational</i>	0	0	0	0	0
<i>Commuting</i>	0	0	0	0	0
<i>Hotels</i>	0	0	0	0	0
<b>Total Casualties - 2am</b>	<b>56</b>	<b>2</b>	<b>0</b>	<b>0</b>	<b>58</b>
<b>Casualties - 2pm</b>					
<i>Other-Residential</i>	8	0	0	0	9
<i>Single Family</i>	7	0	0	0	7
<i>Commuting</i>	0	0	0	0	0
<i>Commercial</i>	53	4	0	0	57
<i>Educational</i>	7	0	0	0	8
<i>Hotels</i>	0	0	0	0	0
<i>Industrial</i>	7	1	0	0	8
<b>Total Casualties - 2pm</b>	<b>83</b>	<b>5</b>	<b>0</b>	<b>0</b>	<b>89</b>
<b>Casualties - 5pm</b>					
<i>Commercial</i>	34	2	0	0	37
<i>Industrial</i>	5	0	0	0	5
<i>Other-Residential</i>	10	1	0	0	11
<i>Single Family</i>	9	0	0	0	10
<i>Educational</i>	1	0	0	0	1
<i>Commuting</i>	2	2	4	1	8
<i>Hotels</i>	0	0	0	0	0
<b>Total Casualties - 5pm</b>	<b>61</b>	<b>6</b>	<b>4</b>	<b>1</b>	<b>71</b>
<b>Santa Barbara</b>					
<b>Casualties - 2am</b>					
<i>Industrial</i>	0	0	0	0	0
<i>Commercial</i>	0	0	0	0	0
<i>Other-Residential</i>	0	0	0	0	0
<i>Commuting</i>	0	0	0	0	0
<i>Educational</i>	0	0	0	0	0
<i>Single Family</i>	0	0	0	0	0
<i>Hotels</i>	0	0	0	0	0
<b>Total Casualties - 2am</b>	<b>0</b>	<b>0</b>	<b>0</b>	<b>0</b>	<b>0</b>
<b>Casualties - 2pm</b>					
<i>Commercial</i>	0	0	0	0	0

	Injury Severity Level				Total
	Severity 1	Severity 2	Severity 3	Severity 4	
<b>California</b>					
<b>Santa Barbara</b>					
<b>Casualties - 2pm</b>					
Single Family	0	0	0	0	0
Other-Residential	0	0	0	0	0
Commuting	0	0	0	0	0
Educational	0	0	0	0	0
Hotels	0	0	0	0	0
Industrial	0	0	0	0	0
<b>Total Casualties - 2pm</b>	<b>0</b>	<b>0</b>	<b>0</b>	<b>0</b>	<b>0</b>
<b>Casualties - 5pm</b>					
Other-Residential	0	0	0	0	0
Single Family	0	0	0	0	0
Commercial	0	0	0	0	0
Commuting	0	0	0	0	0
Educational	0	0	0	0	0
Industrial	0	0	0	0	0
Hotels	0	0	0	0	0
<b>Total Casualties - 5pm</b>	<b>0</b>	<b>0</b>	<b>0</b>	<b>0</b>	<b>0</b>
<b>Santa Clara</b>					
<b>Casualties - 2am</b>					
Commuting	0	0	1	0	1
Educational	0	0	0	0	0
Single Family	461	25	1	1	488
Hotels	1	0	0	0	1
Industrial	24	4	0	1	30
Commercial	15	3	0	1	19
Other-Residential	597	108	13	25	743
<b>Total Casualties - 2am</b>	<b>1,099</b>	<b>141</b>	<b>15</b>	<b>28</b>	<b>1,282</b>
<b>Casualties - 2pm</b>					
Industrial	179	31	4	7	220
Commercial	1,036	204	26	50	1,316
Single Family	123	7	0	0	131
Commuting	2	3	5	1	11
Hotels	0	0	0	0	0
Other-Residential	188	36	5	9	238
Educational	215	31	3	6	255
<b>Total Casualties - 2pm</b>	<b>1,744</b>	<b>312</b>	<b>42</b>	<b>73</b>	<b>2,171</b>
<b>Casualties - 5pm</b>					
Industrial	112	19	2	4	138
Hotels	0	0	0	0	0
Other-Residential	227	42	5	10	284
Commercial	741	146	19	36	941
Commuting	46	59	102	20	226

	Injury Severity Level				Total
	Severity 1	Severity 2	Severity 3	Severity 4	
<b>California</b>					
<b>Santa Clara</b>					
<b>Casualties - 5pm</b>					
Single Family	169	10	0	1	180
Educational	26	3	0	0	29
<b>Total Casualties - 5pm</b>	<b>1,321</b>	<b>279</b>	<b>128</b>	<b>70</b>	<b>1,798</b>
<b>Santa Cruz</b>					
<b>Casualties - 2am</b>					
Hotels	0	0	0	0	0
Educational	0	0	0	0	0
Industrial	0	0	0	0	0
Other-Residential	13	1	0	0	14
Single Family	10	0	0	0	10
Commercial	0	0	0	0	0
Commuting	0	0	0	0	0
<b>Total Casualties - 2am</b>	<b>24</b>	<b>1</b>	<b>0</b>	<b>0</b>	<b>25</b>
<b>Casualties - 2pm</b>					
Industrial	3	0	0	0	3
Other-Residential	4	0	0	0	4
Commercial	21	2	0	0	23
Commuting	0	0	0	0	0
Educational	5	0	0	0	6
Single Family	3	0	0	0	3
Hotels	0	0	0	0	0
<b>Total Casualties - 2pm</b>	<b>36</b>	<b>3</b>	<b>0</b>	<b>0</b>	<b>39</b>
<b>Casualties - 5pm</b>					
Industrial	2	0	0	0	2
Other-Residential	5	0	0	0	5
Commercial	15	1	0	0	16
Commuting	0	0	0	0	1
Single Family	4	0	0	0	4
Hotels	0	0	0	0	0
Educational	0	0	0	0	0
<b>Total Casualties - 5pm</b>	<b>26</b>	<b>2</b>	<b>0</b>	<b>0</b>	<b>28</b>
<b>Solano</b>					
<b>Casualties - 2am</b>					
Industrial	0	0	0	0	0
Other-Residential	7	0	0	0	7
Commercial	0	0	0	0	0
Educational	0	0	0	0	0
Commuting	0	0	0	0	0
Single Family	13	0	0	0	13
Hotels	0	0	0	0	0

	Injury Severity Level				Total
	Severity 1	Severity 2	Severity 3	Severity 4	
<b>California</b>					
<b>Solano</b>					
<b>Total Casualties - 2am</b>	<b>20</b>	<b>1</b>	<b>0</b>	<b>0</b>	<b>21</b>
<b>Casualties - 2pm</b>					
Single Family	3	0	0	0	4
Other-Residential	2	0	0	0	2
Commercial	13	1	0	0	14
Educational	3	0	0	0	3
Commuting	0	0	0	0	0
Hotels	0	0	0	0	0
Industrial	3	0	0	0	3
<b>Total Casualties - 2pm</b>	<b>24</b>	<b>2</b>	<b>0</b>	<b>0</b>	<b>26</b>
<b>Casualties - 5pm</b>					
Commercial	10	1	0	0	10
Other-Residential	3	0	0	0	3
Single Family	5	0	0	0	5
Educational	0	0	0	0	0
Commuting	0	0	1	0	2
Hotels	0	0	0	0	0
Industrial	2	0	0	0	2
<b>Total Casualties - 5pm</b>	<b>19</b>	<b>1</b>	<b>1</b>	<b>0</b>	<b>22</b>
<b>Sonoma</b>					
<b>Casualties - 2am</b>					
Single Family	1	0	0	0	1
Other-Residential	1	0	0	0	1
Commercial	0	0	0	0	0
Commuting	0	0	0	0	0
Hotels	0	0	0	0	0
Educational	0	0	0	0	0
Industrial	0	0	0	0	0
<b>Total Casualties - 2am</b>	<b>1</b>	<b>0</b>	<b>0</b>	<b>0</b>	<b>2</b>
<b>Casualties - 2pm</b>					
Single Family	0	0	0	0	0
Commuting	0	0	0	0	0
Educational	0	0	0	0	0
Hotels	0	0	0	0	0
Industrial	0	0	0	0	0
Other-Residential	0	0	0	0	0
Commercial	1	0	0	0	2
<b>Total Casualties - 2pm</b>	<b>2</b>	<b>0</b>	<b>0</b>	<b>0</b>	<b>3</b>
<b>Casualties - 5pm</b>					
Single Family	0	0	0	0	0
Commercial	1	0	0	0	1

	Injury Severity Level				Total
	Severity 1	Severity 2	Severity 3	Severity 4	
<b>California</b>					
<b>Sonoma</b>					
<b>Casualties - 5pm</b>					
<i>Commuting</i>	0	0	0	0	0
<i>Hotels</i>	0	0	0	0	0
<i>Educational</i>	0	0	0	0	0
<i>Industrial</i>	0	0	0	0	0
<i>Other-Residential</i>	0	0	0	0	0
<b>Total Casualties - 5pm</b>	<b>2</b>	<b>0</b>	<b>0</b>	<b>0</b>	<b>2</b>
<b>Stanislaus</b>					
<b>Casualties - 2am</b>					
<i>Hotels</i>	0	0	0	0	0
<i>Industrial</i>	0	0	0	0	0
<i>Commercial</i>	0	0	0	0	0
<i>Single Family</i>	4	0	0	0	4
<i>Other-Residential</i>	3	0	0	0	3
<i>Commuting</i>	0	0	0	0	0
<i>Educational</i>	0	0	0	0	0
<b>Total Casualties - 2am</b>	<b>8</b>	<b>0</b>	<b>0</b>	<b>0</b>	<b>8</b>
<b>Casualties - 2pm</b>					
<i>Industrial</i>	1	0	0	0	1
<i>Other-Residential</i>	1	0	0	0	1
<i>Commercial</i>	6	0	0	0	6
<i>Commuting</i>	0	0	0	0	0
<i>Educational</i>	2	0	0	0	2
<i>Single Family</i>	1	0	0	0	1
<i>Hotels</i>	0	0	0	0	0
<b>Total Casualties - 2pm</b>	<b>11</b>	<b>0</b>	<b>0</b>	<b>0</b>	<b>12</b>
<b>Casualties - 5pm</b>					
<i>Industrial</i>	1	0	0	0	1
<i>Other-Residential</i>	1	0	0	0	1
<i>Commuting</i>	0	0	0	0	0
<i>Single Family</i>	2	0	0	0	2
<i>Commercial</i>	4	0	0	0	5
<i>Hotels</i>	0	0	0	0	0
<i>Educational</i>	0	0	0	0	0
<b>Total Casualties - 5pm</b>	<b>8</b>	<b>0</b>	<b>0</b>	<b>0</b>	<b>8</b>
<b>Sutter</b>					
<b>Casualties - 2am</b>					
<i>Educational</i>	0	0	0	0	0
<i>Commuting</i>	0	0	0	0	0
<i>Hotels</i>	0	0	0	0	0
<i>Industrial</i>	0	0	0	0	0
<i>Other-Residential</i>	0	0	0	0	0

	Injury Severity Level				Total
	Severity 1	Severity 2	Severity 3	Severity 4	
<b>California</b>					
<b>Sutter</b>					
<b>Casualties - 2am</b>					
Single Family	0	0	0	0	0
Commercial	0	0	0	0	0
<b>Total Casualties - 2am</b>	<b>0</b>	<b>0</b>	<b>0</b>	<b>0</b>	<b>0</b>
<b>Casualties - 2pm</b>					
Industrial	0	0	0	0	0
Commuting	0	0	0	0	0
Other-Residential	0	0	0	0	0
Single Family	0	0	0	0	0
Commercial	0	0	0	0	0
Hotels	0	0	0	0	0
Educational	0	0	0	0	0
<b>Total Casualties - 2pm</b>	<b>0</b>	<b>0</b>	<b>0</b>	<b>0</b>	<b>0</b>
<b>Casualties - 5pm</b>					
Commuting	0	0	0	0	0
Commercial	0	0	0	0	0
Educational	0	0	0	0	0
Single Family	0	0	0	0	0
Hotels	0	0	0	0	0
Industrial	0	0	0	0	0
Other-Residential	0	0	0	0	0
<b>Total Casualties - 5pm</b>	<b>0</b>	<b>0</b>	<b>0</b>	<b>0</b>	<b>0</b>
<b>Tulare</b>					
<b>Casualties - 2am</b>					
Commercial	0	0	0	0	0
Commuting	0	0	0	0	0
Single Family	0	0	0	0	0
Educational	0	0	0	0	0
Hotels	0	0	0	0	0
Industrial	0	0	0	0	0
Other-Residential	0	0	0	0	0
<b>Total Casualties - 2am</b>	<b>0</b>	<b>0</b>	<b>0</b>	<b>0</b>	<b>0</b>
<b>Casualties - 2pm</b>					
Industrial	0	0	0	0	0
Hotels	0	0	0	0	0
Commercial	0	0	0	0	0
Other-Residential	0	0	0	0	0
Educational	0	0	0	0	0
Commuting	0	0	0	0	0
Single Family	0	0	0	0	0
<b>Total Casualties - 2pm</b>	<b>0</b>	<b>0</b>	<b>0</b>	<b>0</b>	<b>0</b>

	Injury Severity Level				Total
	Severity 1	Severity 2	Severity 3	Severity 4	
<b>California</b>					
<b>Tulare</b>					
<b>Casualties - 5pm</b>					
<i>Other-Residential</i>	0	0	0	0	0
<i>Commercial</i>	0	0	0	0	0
<i>Single Family</i>	0	0	0	0	0
<i>Hotels</i>	0	0	0	0	0
<i>Commuting</i>	0	0	0	0	0
<i>Educational</i>	0	0	0	0	0
<i>Industrial</i>	0	0	0	0	0
<b>Total Casualties - 5pm</b>	<b>0</b>	<b>0</b>	<b>0</b>	<b>0</b>	<b>0</b>
<b>Tuolumne</b>					
<b>Casualties - 2am</b>					
<i>Other-Residential</i>	0	0	0	0	0
<i>Industrial</i>	0	0	0	0	0
<i>Commercial</i>	0	0	0	0	0
<i>Commuting</i>	0	0	0	0	0
<i>Single Family</i>	0	0	0	0	0
<i>Educational</i>	0	0	0	0	0
<i>Hotels</i>	0	0	0	0	0
<b>Total Casualties - 2am</b>	<b>0</b>	<b>0</b>	<b>0</b>	<b>0</b>	<b>0</b>
<b>Casualties - 2pm</b>					
<i>Other-Residential</i>	0	0	0	0	0
<i>Commercial</i>	0	0	0	0	0
<i>Single Family</i>	0	0	0	0	0
<i>Educational</i>	0	0	0	0	0
<i>Commuting</i>	0	0	0	0	0
<i>Industrial</i>	0	0	0	0	0
<i>Hotels</i>	0	0	0	0	0
<b>Total Casualties - 2pm</b>	<b>0</b>	<b>0</b>	<b>0</b>	<b>0</b>	<b>0</b>
<b>Casualties - 5pm</b>					
<i>Industrial</i>	0	0	0	0	0
<i>Other-Residential</i>	0	0	0	0	0
<i>Commercial</i>	0	0	0	0	0
<i>Hotels</i>	0	0	0	0	0
<i>Commuting</i>	0	0	0	0	0
<i>Educational</i>	0	0	0	0	0
<i>Single Family</i>	0	0	0	0	0
<b>Total Casualties - 5pm</b>	<b>0</b>	<b>0</b>	<b>0</b>	<b>0</b>	<b>0</b>
<b>Yolo</b>					
<b>Casualties - 2am</b>					
<i>Single Family</i>	0	0	0	0	0
<i>Other-Residential</i>	0	0	0	0	0
<i>Commercial</i>	0	0	0	0	0

### Injury Severity Level

Severity 1      Severity 2      Severity 3      Severity 4      Total

#### California

##### Yolo

##### Casualties - 2am

<i>Educational</i>	0	0	0	0	0
<i>Commuting</i>	0	0	0	0	0
<i>Hotels</i>	0	0	0	0	0
<i>Industrial</i>	0	0	0	0	0
<b>Total Casualties - 2am</b>	<b>1</b>	<b>0</b>	<b>0</b>	<b>0</b>	<b>1</b>

##### Casualties - 2pm

<i>Industrial</i>	0	0	0	0	0
<i>Hotels</i>	0	0	0	0	0
<i>Educational</i>	0	0	0	0	0
<i>Commuting</i>	0	0	0	0	0
<i>Commercial</i>	1	0	0	0	1
<i>Other-Residential</i>	0	0	0	0	0
<i>Single Family</i>	0	0	0	0	0
<b>Total Casualties - 2pm</b>	<b>1</b>	<b>0</b>	<b>0</b>	<b>0</b>	<b>1</b>

##### Casualties - 5pm

<i>Other-Residential</i>	0	0	0	0	0
<i>Single Family</i>	0	0	0	0	0
<i>Commuting</i>	0	0	0	0	0
<i>Commercial</i>	0	0	0	0	0
<i>Hotels</i>	0	0	0	0	0
<i>Educational</i>	0	0	0	0	0
<i>Industrial</i>	0	0	0	0	0
<b>Total Casualties - 5pm</b>	<b>1</b>	<b>0</b>	<b>0</b>	<b>0</b>	<b>1</b>

##### Yuba

##### Casualties - 2am

<i>Industrial</i>	0	0	0	0	0
<i>Other-Residential</i>	0	0	0	0	0
<i>Commercial</i>	0	0	0	0	0
<i>Educational</i>	0	0	0	0	0
<i>Single Family</i>	0	0	0	0	0
<i>Commuting</i>	0	0	0	0	0
<i>Hotels</i>	0	0	0	0	0
<b>Total Casualties - 2am</b>	<b>0</b>	<b>0</b>	<b>0</b>	<b>0</b>	<b>0</b>

##### Casualties - 2pm

<i>Commercial</i>	0	0	0	0	0
<i>Commuting</i>	0	0	0	0	0
<i>Single Family</i>	0	0	0	0	0
<i>Other-Residential</i>	0	0	0	0	0
<i>Industrial</i>	0	0	0	0	0
<i>Hotels</i>	0	0	0	0	0
<i>Educational</i>	0	0	0	0	0

	Injury Severity Level				Total
	Severity 1	Severity 2	Severity 3	Severity 4	
<b>California</b>					
<b>Yuba</b>					
<b>Total Casualties - 2pm</b>	<b>0</b>	<b>0</b>	<b>0</b>	<b>0</b>	<b>0</b>
<b>Casualties - 5pm</b>					
Hotels	0	0	0	0	0
Educational	0	0	0	0	0
Industrial	0	0	0	0	0
Other-Residential	0	0	0	0	0
Single Family	0	0	0	0	0
Commercial	0	0	0	0	0
Commuting	0	0	0	0	0
<b>Total Casualties - 5pm</b>	<b>0</b>	<b>0</b>	<b>0</b>	<b>0</b>	<b>0</b>
<b>Region Total</b>	<b>NA</b>	<b>NA</b>	<b>NA</b>	<b>NA</b>	<b>NA</b>

Totals only reflect data for those census tracts/blocks included in the user's study region and will reflect the entire county/state only if all of the census blocks for that county/states were selected at the time of study region creation.

## Debris Summary Report

May 20, 2024

All values are in thousands of tons.

	Brick, Wood & Others	Concrete & Steel	Total
<b>California</b>			
Fresno	2	1	3
Butte	0	0	0
Alameda	839	1,574	2,413
Solano	20	26	46
San Mateo	42	51	93
Tuolumne	0	0	0
Kings	0	0	0
San Joaquin	40	17	57
San Luis Obispo	0	0	0
Nevada	0	0	0
Madera	0	0	1
Tulare	0	0	0
Colusa	0	0	0
Napa	3	3	7
Mendocino	0	0	0
Contra Costa	304	439	743
El Dorado	0	0	0
Kern	0	0	0
Amador	0	0	0

	Brick, Wood & Others	Concrete & Steel	Total
Santa Cruz	25	34	58
Lake	0	0	0
Monterey	44	69	113
Sacramento	5	3	8
Mariposa	0	0	0
Yolo	1	1	2
Calaveras	0	0	0
Yuba	0	0	0
Glenn	0	0	0
Alpine	0	0	0
Stanislaus	10	10	20
Sonoma	3	2	5
Santa Barbara	0	0	0
Santa Clara	672	1,118	1,790
San Benito	53	116	170
San Francisco	329	184	513
Merced	6	9	15
Placer	0	0	0
Marin	5	4	9
Sutter	0	0	0
<b>Total</b>	<b>2,403</b>	<b>3,662</b>	<b>6,066</b>
<b>Region Total</b>	<b>2,403</b>	<b>3,662</b>	<b>6,066</b>

---

---

**Brick, Wood & Others**

**Concrete & Steel**

**Total**

---

*Totals only reflect data for those census tracts/blocks included in the user's study region and will reflect the entire county/state only if all of the census blocks for that county/states were selected at the time of study region creation.*

---

## Direct Economic Losses For Buildings

May 20, 2024

All values are in thousands of dollars

	Capital Stock Losses				Loss Ratio %	Income Losses				Total Loss
	Cost Structural Damage	Cost Non-struct. Damage	Cost Contents Damage	Inventory Loss		Relocation Loss	Capital Related Loss	Wages Losses	Rental Income Loss	
<b>California</b>										
Contra Costa	847,262	4,936,251	2,145,667	131,106	2.65	336,950	175,623	227,684	186,084	8,986,628
Mendocino	0	12	8	1	0.00	0	0	0	0	21
Napa	6,478	59,189	31,298	3,481	0.20	1,297	1,067	1,303	1,316	105,431
Colusa	13	214	138	26	0.01	2	5	5	4	409
Alameda	1,995,020	9,325,524	4,176,986	293,581	3.40	871,146	504,366	680,589	508,282	18,355,493
Nevada	0	1	1	0	0.00	0	0	0	0	2
San Joaquin	47,322	340,632	183,769	22,102	0.28	12,225	5,774	7,069	7,913	626,806
Tuolumne	0	43	30	3	0.00	0	0	0	0	75
Tulare	52	1,874	1,261	289	0.00	4	6	8	9	3,504

	Capital Stock Losses				Loss Ratio %	Income Losses				Total Loss
	Cost Structural Damage	Cost Non-struct. Damage	Cost Contents Damage	Inventory Loss		Relocation Loss	Capital Related Loss	Wages Losses	Rental Income Loss	
<b>Madera</b>	711	7,134	3,982	853	0.03	81	52	61	98	12,972
<b>Butte</b>	12	152	105	18	0.00	1	1	1	2	292
<b>Fresno</b>	3,243	36,353	20,963	4,363	0.02	492	495	551	607	67,066
<b>Kings</b>	251	3,677	1,934	245	0.02	36	54	65	53	6,316
<b>San Luis Obispo</b>	200	3,261	1,664	167	0.01	30	53	48	57	5,479
<b>Solano</b>	43,935	314,371	155,332	14,946	0.44	11,115	8,741	10,994	8,747	568,181
<b>San Mateo</b>	114,043	841,018	405,331	28,998	0.61	28,688	21,484	26,269	28,432	1,494,263
<b>Yolo</b>	1,945	32,623	20,157	2,105	0.08	249	303	362	390	58,135
<b>Glenn</b>	5	85	60	15	0.00	0	1	1	1	168
<b>San Benito</b>	141,034	712,887	311,558	27,910	6.45	58,206	32,637	38,937	23,448	1,346,618
<b>San Francisco</b>	357,995	925,023	438,758	24,425	0.83	164,585	102,499	120,875	154,297	2,288,458
<b>Stanislaus</b>	19,284	162,506	88,306	12,148	0.18	3,961	2,444	2,836	3,617	295,102
<b>Sutter</b>	46	685	435	114	0.00	4	2	3	4	1,293
<b>Santa Clara</b>	1,779,800	9,348,972	4,271,988	324,037	2.92	622,528	425,061	489,288	387,262	17,648,936
<b>Sonoma</b>	4,449	45,644	25,100	3,408	0.05	819	928	1,038	824	82,209
<b>Calaveras</b>	14	221	157	48	0.00	1	3	3	2	450
<b>Yuba</b>	9	303	189	23	0.00	1	2	2	3	531
<b>Alpine</b>	0	0	0	0	0.00	0	0	0	0	0

	Capital Stock Losses				Loss Ratio %	Income Losses				Total Loss
	Cost Structural Damage	Cost Non-struct. Damage	Cost Contents Damage	Inventory Loss		Relocation Loss	Capital Related Loss	Wages Losses	Rental Income Loss	
<b>Merced</b>	22,920	74,274	45,602	17,308	0.19	3,126	1,425	1,239	1,127	167,020
<b>Santa Barbara</b>	8	403	255	37	0.00	1	1	2	2	709
<b>Placer</b>	90	2,403	1,385	130	0.00	8	13	14	19	4,062
<b>Marin</b>	10,134	105,392	55,369	3,840	0.18	1,863	2,118	2,286	2,208	183,210
<b>Kern</b>	14	428	277	70	0.00	1	1	2	2	796
<b>El Dorado</b>	0	104	76	4	0.00	0	0	0	0	185
<b>Lake</b>	6	193	102	9	0.00	0	1	1	1	314
<b>Santa Cruz</b>	58,231	294,607	146,186	22,825	0.64	15,579	12,356	14,998	10,701	575,483
<b>Mariposa</b>	0	11	7	1	0.00	0	0	0	0	19
<b>Amador</b>	2	103	68	8	0.00	0	1	1	1	182
<b>Sacramento</b>	6,828	86,431	47,709	4,232	0.04	1,635	2,025	2,375	2,001	153,235
<b>Monterey</b>	99,706	541,610	274,192	47,902	0.84	33,312	17,979	20,596	21,876	1,057,173
<b>Total</b>	<b>5,561,061</b>	<b>28,204,615</b>	<b>12,856,408</b>	<b>990,779</b>	<b>0.51</b>	<b>2,167,947</b>	<b>1,317,522</b>	<b>1,649,501</b>	<b>1,349,394</b>	<b>54,097,226</b>
<b>Region Total</b>	<b>5,561,061</b>	<b>28,204,615</b>	<b>12,856,408</b>	<b>990,779</b>	<b>0.51</b>	<b>2,167,947</b>	<b>1,317,522</b>	<b>1,649,501</b>	<b>1,349,394</b>	<b>54,097,226</b>

Totals only reflect data for those census tracts/blocks included in the user's study region and will reflect the entire county/state only if all of the census blocks for that county/states were selected at the time of study region creation.

## Direct Economic Loss For Transportation

May 20, 2024

All values are in thousands of dollars

	Highway	Railway	Light Rail	Bus Facility	Ports	Ferries	Airport	Total
<b>California</b>								
<b>Alameda</b>								
Segments	0	0	0					0
Bridges	206,782	32,928	196					239,906
Tunnels	3,536	0	0					3,536
Facilities		8,468	0	434	28,851	642	72,125	110,519
<b>Total</b>	<b>210,318</b>	<b>41,396</b>	<b>196</b>	<b>434</b>	<b>28,851</b>	<b>642</b>	<b>72,125</b>	<b>353,962</b>
<b>Alpine</b>								
Segments	0	0	0					0
Bridges	0	0	0					0
Tunnels	0	0	0					0
Facilities		0	0	0	0	0	6	6
<b>Total</b>	<b>0</b>	<b>0</b>	<b>0</b>	<b>0</b>	<b>0</b>	<b>0</b>	<b>6</b>	<b>6</b>
<b>Amador</b>								
Segments	0	0	0					0
Bridges	0	0	0					0
Tunnels	0	0	0					0
Facilities		0	0	0	0	0	51	51

	Highway	Railway	Light Rail	Bus Facility	Ports	Ferries	Airport	Total
<b>Total</b>	<b>0</b>	<b>0</b>	<b>0</b>	<b>0</b>	<b>0</b>	<b>0</b>	<b>51</b>	<b>51</b>
<b>Butte</b>								
Segments	0	0	0					0
Bridges	1	0	0					1
Tunnels	0	0	0					0
Facilities		3	0	0	0	0	26	28
<b>Total</b>	<b>1</b>	<b>3</b>	<b>0</b>	<b>0</b>	<b>0</b>	<b>0</b>	<b>26</b>	<b>29</b>
<b>Calaveras</b>								
Segments	0	0	0					0
Bridges	0	0	0					0
Tunnels	0	0	0					0
Facilities		0	0	0	0	0	102	102
<b>Total</b>	<b>0</b>	<b>0</b>	<b>0</b>	<b>0</b>	<b>0</b>	<b>0</b>	<b>102</b>	<b>102</b>
<b>Colusa</b>								
Segments	0	0	0					0
Bridges	11	0	0					11
Tunnels	0	0	0					0
Facilities		0	0	0	0	0	51	51
<b>Total</b>	<b>11</b>	<b>0</b>	<b>0</b>	<b>0</b>	<b>0</b>	<b>0</b>	<b>51</b>	<b>62</b>
<b>Contra Costa</b>								
Segments	0	0	0					0
Bridges	113,850	8,204	93					122,147
Tunnels	1,530	92	0					1,622
Facilities		3,057	2,321	0	35,537	639	3,862	45,415

	Highway	Railway	Light Rail	Bus Facility	Ports	Ferries	Airport	Total
<b>Total</b>	<b>115,379</b>	<b>11,353</b>	<b>2,414</b>	<b>0</b>	<b>35,537</b>	<b>639</b>	<b>3,862</b>	<b>169,183</b>
<b>El Dorado</b>								
Segments	0	0	0					0
Bridges	0	0	0					0
Tunnels	0	0	0					0
Facilities		0	0	26	0	0	191	217
<b>Total</b>	<b>0</b>	<b>0</b>	<b>0</b>	<b>26</b>	<b>0</b>	<b>0</b>	<b>191</b>	<b>217</b>
<b>Fresno</b>								
Segments	0	0	0					0
Bridges	852	4	0					856
Tunnels	0	0	0					0
Facilities		314	0	21	0	0	1,639	1,974
<b>Total</b>	<b>852</b>	<b>319</b>	<b>0</b>	<b>21</b>	<b>0</b>	<b>0</b>	<b>1,639</b>	<b>2,830</b>
<b>Glenn</b>								
Segments	0	0	0					0
Bridges	0	0	0					0
Tunnels	0	0	0					0
Facilities		0	0	0	37	0	57	93
<b>Total</b>	<b>0</b>	<b>0</b>	<b>0</b>	<b>0</b>	<b>37</b>	<b>0</b>	<b>57</b>	<b>94</b>
<b>Kern</b>								
Segments	0	0	0					0
Bridges	2	0	0					2
Tunnels	0	0	0					0
Facilities		66	0	44	0	0	222	332

	Highway	Railway	Light Rail	Bus Facility	Ports	Ferries	Airport	Total
<b>Total</b>	<b>2</b>	<b>66</b>	<b>0</b>	<b>44</b>	<b>0</b>	<b>0</b>	<b>222</b>	<b>334</b>
<b>Kings</b>								
Segments	0	0	0					0
Bridges	12	0	0					12
Tunnels	0	0	0					0
Facilities		128	0	41	0	0	526	695
<b>Total</b>	<b>12</b>	<b>128</b>	<b>0</b>	<b>41</b>	<b>0</b>	<b>0</b>	<b>526</b>	<b>707</b>
<b>Lake</b>								
Segments	0	0	0					0
Bridges	0	0	0					0
Tunnels	0	0	0					0
Facilities		0	0	0	0	0	57	57
<b>Total</b>	<b>0</b>	<b>0</b>	<b>0</b>	<b>0</b>	<b>0</b>	<b>0</b>	<b>57</b>	<b>57</b>
<b>Madera</b>								
Segments	0	0	0					0
Bridges	40	0	0					40
Tunnels	0	0	0					0
Facilities		26	0	21	0	0	102	149
<b>Total</b>	<b>40</b>	<b>26</b>	<b>0</b>	<b>21</b>	<b>0</b>	<b>0</b>	<b>102</b>	<b>189</b>
<b>Marin</b>								
Segments	0	0	0					0
Bridges	2,767	6	0					2,772
Tunnels	49	0	0					49
Facilities		0	0	720	6,527	502	400	8,149

	Highway	Railway	Light Rail	Bus Facility	Ports	Ferries	Airport	Total
<b>Total</b>	<b>2,816</b>	<b>6</b>	<b>0</b>	<b>720</b>	<b>6,527</b>	<b>502</b>	<b>400</b>	<b>10,971</b>
<b>Mariposa</b>								
Segments	0	0	0					0
Bridges	0	0	0					0
Tunnels	0	0	0					0
Facilities		0	0	10	0	0	51	61
<b>Total</b>	<b>0</b>	<b>0</b>	<b>0</b>	<b>10</b>	<b>0</b>	<b>0</b>	<b>51</b>	<b>61</b>
<b>Mendocino</b>								
Segments	0	0	0					0
Bridges	0	0	0					0
Tunnels	0	0	0					0
Facilities		0	0	48	4	0	119	171
<b>Total</b>	<b>0</b>	<b>0</b>	<b>0</b>	<b>48</b>	<b>4</b>	<b>0</b>	<b>119</b>	<b>171</b>
<b>Merced</b>								
Segments	0	0	0					0
Bridges	1,397	25	0					1,421
Tunnels	0	0	0					0
Facilities		135	0	91	0	0	2,113	2,339
<b>Total</b>	<b>1,397</b>	<b>160</b>	<b>0</b>	<b>91</b>	<b>0</b>	<b>0</b>	<b>2,113</b>	<b>3,760</b>
<b>Monterey</b>								
Segments	0	0	0					0
Bridges	6,167	502	0					6,669
Tunnels	1	0	0					1
Facilities		394	0	1,947	469	0	5,184	7,994

	Highway	Railway	Light Rail	Bus Facility	Ports	Ferries	Airport	Total
<b>Total</b>	<b>6,168</b>	<b>896</b>	<b>0</b>	<b>1,947</b>	<b>469</b>	<b>0</b>	<b>5,184</b>	<b>14,664</b>
<b>Napa</b>								
<i>Segments</i>	0	0	0					0
<i>Bridges</i>	94	82	0					177
<i>Tunnels</i>	0	0	0					0
<i>Facilities</i>		0	0	171	997	0	1,225	2,393
<b>Total</b>	<b>94</b>	<b>82</b>	<b>0</b>	<b>171</b>	<b>997</b>	<b>0</b>	<b>1,225</b>	<b>2,570</b>
<b>Nevada</b>								
<i>Segments</i>	0	0	0					0
<i>Bridges</i>	0	0	0					0
<i>Tunnels</i>	0	0	0					0
<i>Facilities</i>		3	0	0	0	0	11	14
<b>Total</b>	<b>0</b>	<b>3</b>	<b>0</b>	<b>0</b>	<b>0</b>	<b>0</b>	<b>11</b>	<b>14</b>
<b>Placer</b>								
<i>Segments</i>	0	0	0					0
<i>Bridges</i>	2	0	0					2
<i>Tunnels</i>	0	0	0					0
<i>Facilities</i>		80	0	2	0	0	159	241
<b>Total</b>	<b>2</b>	<b>80</b>	<b>0</b>	<b>2</b>	<b>0</b>	<b>0</b>	<b>159</b>	<b>243</b>
<b>Sacramento</b>								
<i>Segments</i>	0	0	0					0
<i>Bridges</i>	725	1	0					726
<i>Tunnels</i>	0	0	0					0
<i>Facilities</i>		109	8,222	181	5,841	100	4,783	19,238

	Highway	Railway	Light Rail	Bus Facility	Ports	Ferries	Airport	Total
<b>Total</b>	<b>725</b>	<b>110</b>	<b>8,222</b>	<b>181</b>	<b>5,841</b>	<b>100</b>	<b>4,783</b>	<b>19,964</b>
<b>San Benito</b>								
Segments	0	0	0					0
Bridges	14,740	5,064	0					19,804
Tunnels	0	0	0					0
Facilities		0	0	0	0	0	4,414	4,414
<b>Total</b>	<b>14,740</b>	<b>5,064</b>	<b>0</b>	<b>0</b>	<b>0</b>	<b>0</b>	<b>4,414</b>	<b>24,218</b>
<b>San Francisco</b>								
Segments	0	0	0					0
Bridges	29,586	66	0					29,652
Tunnels	283	0	0					283
Facilities		0	314,930	559	24,762	542	2,886	343,679
<b>Total</b>	<b>29,869</b>	<b>66</b>	<b>314,930</b>	<b>559</b>	<b>24,762</b>	<b>542</b>	<b>2,886</b>	<b>373,614</b>
<b>San Joaquin</b>								
Segments	0	0	0					0
Bridges	2,902	112	0					3,015
Tunnels	0	0	0					0
Facilities		1,748	0	91	10,808	402	2,605	15,653
<b>Total</b>	<b>2,902</b>	<b>1,860</b>	<b>0</b>	<b>91</b>	<b>10,808</b>	<b>402</b>	<b>2,605</b>	<b>18,668</b>
<b>San Luis Obispo</b>								
Segments	0	0	0					0
Bridges	39	0	0					39
Tunnels	0	0	0					0
Facilities		77	0	41	294	0	784	1,196

	Highway	Railway	Light Rail	Bus Facility	Ports	Ferries	Airport	Total
<b>Total</b>	<b>39</b>	<b>77</b>	<b>0</b>	<b>41</b>	<b>294</b>	<b>0</b>	<b>784</b>	<b>1,235</b>
<b>San Mateo</b>								
<i>Segments</i>	0	0	0					0
<i>Bridges</i>	43,264	149	0					43,413
<i>Tunnels</i>	36	0	0					36
<i>Facilities</i>		0	0	0	8,026	0	100,818	108,844
<b>Total</b>	<b>43,300</b>	<b>149</b>	<b>0</b>	<b>0</b>	<b>8,026</b>	<b>0</b>	<b>100,818</b>	<b>152,293</b>
<b>Santa Barbara</b>								
<i>Segments</i>	0	0	0					0
<i>Bridges</i>	9	0	0					9
<i>Tunnels</i>	0	0	0					0
<i>Facilities</i>		37	0	46	29	0	91	202
<b>Total</b>	<b>9</b>	<b>37</b>	<b>0</b>	<b>46</b>	<b>29</b>	<b>0</b>	<b>91</b>	<b>211</b>
<b>Santa Clara</b>								
<i>Segments</i>	0	0	0					0
<i>Bridges</i>	221,923	14,066	41					236,030
<i>Tunnels</i>	176	0	0					176
<i>Facilities</i>		2,516	133,553	1,095	4,014	0	84,435	225,614
<b>Total</b>	<b>222,099</b>	<b>16,582</b>	<b>133,594</b>	<b>1,095</b>	<b>4,014</b>	<b>0</b>	<b>84,435</b>	<b>461,819</b>
<b>Santa Cruz</b>								
<i>Segments</i>	0	0	0					0
<i>Bridges</i>	1,028	137	0					1,166
<i>Tunnels</i>	0	0	0					0
<i>Facilities</i>		0	0	352	288	0	2,956	3,596

	Highway	Railway	Light Rail	Bus Facility	Ports	Ferries	Airport	Total
<b>Total</b>	<b>1,028</b>	<b>137</b>	<b>0</b>	<b>352</b>	<b>288</b>	<b>0</b>	<b>2,956</b>	<b>4,761</b>
<b>Solano</b>								
<i>Segments</i>	0	0	0					0
<i>Bridges</i>	5,153	1,052	0					6,206
<i>Tunnels</i>	0	0	0					0
<i>Facilities</i>		790	0	590	15,508	449	1,348	18,685
<b>Total</b>	<b>5,153</b>	<b>1,843</b>	<b>0</b>	<b>590</b>	<b>15,508</b>	<b>449</b>	<b>1,348</b>	<b>24,890</b>
<b>Sonoma</b>								
<i>Segments</i>	0	0	0					0
<i>Bridges</i>	497	95	0					592
<i>Tunnels</i>	0	0	0					0
<i>Facilities</i>		0	0	97	508	0	833	1,437
<b>Total</b>	<b>497</b>	<b>95</b>	<b>0</b>	<b>97</b>	<b>508</b>	<b>0</b>	<b>833</b>	<b>2,029</b>
<b>Stanislaus</b>								
<i>Segments</i>	0	0	0					0
<i>Bridges</i>	608	22	0					630
<i>Tunnels</i>	0	0	0					0
<i>Facilities</i>		655	0	183	0	0	999	1,837
<b>Total</b>	<b>608</b>	<b>677</b>	<b>0</b>	<b>183</b>	<b>0</b>	<b>0</b>	<b>999</b>	<b>2,467</b>
<b>Sutter</b>								
<i>Segments</i>	0	0	0					0
<i>Bridges</i>	24	0	0					24
<i>Tunnels</i>	0	0	0					0
<i>Facilities</i>		0	0	0	0	0	129	129

	Highway	Railway	Light Rail	Bus Facility	Ports	Ferries	Airport	Total
<b>Total</b>	<b>24</b>	<b>0</b>	<b>0</b>	<b>0</b>	<b>0</b>	<b>0</b>	<b>129</b>	<b>152</b>
<b>Tulare</b>								
Segments	0	0	0					0
Bridges	19	0	0					19
Tunnels	0	0	0					0
Facilities		0	0	83	0	0	255	338
<b>Total</b>	<b>19</b>	<b>0</b>	<b>0</b>	<b>83</b>	<b>0</b>	<b>0</b>	<b>255</b>	<b>357</b>
<b>Tuolumne</b>								
Segments	0	0	0					0
Bridges	0	0	0					0
Tunnels	0	0	0					0
Facilities		0	0	0	0	0	153	153
<b>Total</b>	<b>0</b>	<b>0</b>	<b>0</b>	<b>0</b>	<b>0</b>	<b>0</b>	<b>153</b>	<b>153</b>
<b>Yolo</b>								
Segments	0	0	0					0
Bridges	1,820	3	0					1,822
Tunnels	0	0	0					0
Facilities		546	0	0	2,658	0	652	3,857
<b>Total</b>	<b>1,820</b>	<b>549</b>	<b>0</b>	<b>0</b>	<b>2,658</b>	<b>0</b>	<b>652</b>	<b>5,679</b>
<b>Yuba</b>								
Segments	0	0	0					0
Bridges	1	0	0					1
Tunnels	0	0	0					0
Facilities		0	0	22	0	0	102	124

	Highway	Railway	Light Rail	Bus Facility	Ports	Ferries	Airport	Total
<b>Total</b>	1	0	0	22	0	0	102	124
<b>Total</b>	659,926	81,763	459,357	6,914	145,157	3,276	296,521	1,652,913
<b>Region Total</b>	659,926	81,763	459,357	6,914	145,157	3,276	296,521	1,652,913

*Totals only reflect data for those census tracts/blocks included in the user's study region and will reflect the entire county/state only if all of the census blocks for that county/states were selected at the time of study region creation.*

## Direct Economic Loss For Utilities

May 20, 2024

All values are in thousands of dollars

	Potable Water	Waste Water	Oil Systems	Natural Gas	Electric Power	Communication	Total
<b>California</b>							
<b>Alameda</b>							
<i>Facilities</i>	17,741	347,533	0	0	709,703	856	1,075,833
<i>Pipelines</i>	14,121	7,093	0	0			21,214
<b>Total</b>	<b>31,862</b>	<b>354,626</b>	<b>0</b>	<b>0</b>	<b>709,703</b>	<b>856</b>	<b>1,097,047</b>
<b>Alpine</b>							
<i>Facilities</i>	0	3	0	0	0	0	3
<i>Pipelines</i>	2	1	0	0			2
<b>Total</b>	<b>2</b>	<b>3</b>	<b>0</b>	<b>0</b>	<b>0</b>	<b>0</b>	<b>5</b>
<b>Amador</b>							
<i>Facilities</i>	0	3	0	0	7,382	0	7,384
<i>Pipelines</i>	23	12	0	0			35
<b>Total</b>	<b>23</b>	<b>14</b>	<b>0</b>	<b>0</b>	<b>7,382</b>	<b>0</b>	<b>7,419</b>
<b>Butte</b>							
<i>Facilities</i>	0	371	0	0	2,558	0	2,930

	Potable Water	Waste Water	Oil Systems	Natural Gas	Electric Power	Communication	Total
<i>Pipelines</i>	49	24	0	0			73
<b>Total</b>	49	396	0	0	2,558	0	3,003
<b>Calaveras</b>							
<i>Facilities</i>	28	492	0	0	25,137	0	25,657
<i>Pipelines</i>	51	26	0	0			77
<b>Total</b>	79	517	0	0	25,137	0	25,734
<b>Colusa</b>							
<i>Facilities</i>	0	369	0	75	6,525	0	6,969
<i>Pipelines</i>	32	16	0	0			48
<b>Total</b>	32	385	0	75	6,525	0	7,017
<b>Contra Costa</b>							
<i>Facilities</i>	34,298	139,944	93	0	1,778,507	308	1,953,151
<i>Pipelines</i>	10,490	5,270	0	0			15,760
<b>Total</b>	44,789	145,213	93	0	1,778,507	308	1,968,911
<b>El Dorado</b>							
<i>Facilities</i>	28	492	0	0	13,173	1	13,694
<i>Pipelines</i>	70	35	0	0			104
<b>Total</b>	98	527	0	0	13,173	1	13,798
<b>Fresno</b>							
<i>Facilities</i>	0	492	0	13	269,023	15	269,544
<i>Pipelines</i>	893	449	0	0			1,342

	Potable Water	Waste Water	Oil Systems	Natural Gas	Electric Power	Communication	Total
<b>Total</b>	893	941	0	13	269,023	15	270,886
<b>Glenn</b>							
<i>Facilities</i>	0	123	0	0	2	0	125
<i>Pipelines</i>	32	16	0	0			48
<b>Total</b>	32	139	0	0	2	0	173
<b>Kern</b>							
<i>Facilities</i>	2	8	0	75	24,203	1	24,289
<i>Pipelines</i>	215	108	0	0			323
<b>Total</b>	217	116	0	75	24,203	1	24,612
<b>Kings</b>							
<i>Facilities</i>	0	0	0	134	8,104	1	8,239
<i>Pipelines</i>	150	75	0	0			226
<b>Total</b>	150	75	0	134	8,104	1	8,465
<b>Lake</b>							
<i>Facilities</i>	56	0	0	0	5,226	1	5,283
<i>Pipelines</i>	56	28	0	0			84
<b>Total</b>	112	28	0	0	5,226	1	5,367
<b>Madera</b>							
<i>Facilities</i>	0	0	0	0	3,555	1	3,555
<i>Pipelines</i>	190	95	0	0			285
<b>Total</b>	190	95	0	0	3,555	1	3,840

	Potable Water	Waste Water	Oil Systems	Natural Gas	Electric Power	Communication	Total
<b>Marin</b>							
<i>Facilities</i>	348	35,319	0	0	2,093	48	37,809
<i>Pipelines</i>	183	92	0	0			274
<b>Total</b>	531	35,411	0	0	2,093	48	38,083
<b>Mariposa</b>							
<i>Facilities</i>	0	131	0	0	2,808	2	2,940
<i>Pipelines</i>	40	20	0	0			61
<b>Total</b>	40	151	0	0	2,808	2	3,001
<b>Mendocino</b>							
<i>Facilities</i>	0	136	0	0	5	0	141
<i>Pipelines</i>	76	38	0	0			115
<b>Total</b>	76	174	0	0	5	0	256
<b>Merced</b>							
<i>Facilities</i>	0	7,709	0	0	602,487	34	610,231
<i>Pipelines</i>	605	304	0	0			909
<b>Total</b>	605	8,013	0	0	602,487	34	611,139
<b>Monterey</b>							
<i>Facilities</i>	0	67,960	0	0	409,398	793	478,150
<i>Pipelines</i>	2,158	1,084	0	0			3,242
<b>Total</b>	2,158	69,044	0	0	409,398	793	481,393
<b>Napa</b>							

	Potable Water	Waste Water	Oil Systems	Natural Gas	Electric Power	Communication	Total
<i>Facilities</i>	0	11,878	0	0	4,314	10	16,202
<i>Pipelines</i>	101	51	0	0			151
<b>Total</b>	101	11,929	0	0	4,314	10	16,354
<b>Nevada</b>							
<i>Facilities</i>	0	18	0	0	44	0	62
<i>Pipelines</i>	28	14	0	0			42
<b>Total</b>	28	32	0	0	44	0	104
<b>Placer</b>							
<i>Facilities</i>	0	1,229	0	0	4,168	1	5,399
<i>Pipelines</i>	64	32	0	0			95
<b>Total</b>	64	1,261	0	0	4,168	1	5,494
<b>Sacramento</b>							
<i>Facilities</i>	0	11,039	0	0	44,623	61	55,723
<i>Pipelines</i>	397	199	0	0			596
<b>Total</b>	397	11,239	0	0	44,623	61	56,319
<b>San Benito</b>							
<i>Facilities</i>	0	71,639	0	0	0	198	71,837
<i>Pipelines</i>	5,636	2,831	0	0			8,467
<b>Total</b>	5,636	74,471	0	0	0	198	80,304
<b>San Francisco</b>							
<i>Facilities</i>	0	54,976	0	0	4,060	179	59,215

	Potable Water	Waste Water	Oil Systems	Natural Gas	Electric Power	Communication	Total
<i>Pipelines</i>	314	158	0	0			471
<b>Total</b>	314	55,134	0	0	4,060	179	59,687
<b>San Joaquin</b>							
<i>Facilities</i>	1,421	31,903	6	0	175,927	48	209,305
<i>Pipelines</i>	711	357	0	0			1,068
<b>Total</b>	2,132	32,260	6	0	175,927	48	210,373
<b>San Luis Obispo</b>							
<i>Facilities</i>	28	3,786	0	0	25,125	10	28,950
<i>Pipelines</i>	172	86	0	0			258
<b>Total</b>	200	3,873	0	0	25,125	10	29,209
<b>San Mateo</b>							
<i>Facilities</i>	0	89,509	0	0	19,042	158	108,708
<i>Pipelines</i>	830	417	0	0			1,246
<b>Total</b>	830	89,925	0	0	19,042	158	109,954
<b>Santa Barbara</b>							
<i>Facilities</i>	0	18	0	4	18	2	43
<i>Pipelines</i>	73	37	0	0			110
<b>Total</b>	73	55	0	4	18	2	153
<b>Santa Clara</b>							
<i>Facilities</i>	9,736	60,717	0	0	1,217,855	865	1,289,172
<i>Pipelines</i>	13,798	6,931	0	0			20,728

	Potable Water	Waste Water	Oil Systems	Natural Gas	Electric Power	Communication	Total
<b>Total</b>	23,533	67,648	0	0	1,217,855	865	1,309,901
<b>Santa Cruz</b>							
<i>Facilities</i>	0	21,549	0	0	2,945	65	24,558
<i>Pipelines</i>	611	307	0	0			918
<b>Total</b>	611	21,856	0	0	2,945	65	25,477
<b>Solano</b>							
<i>Facilities</i>	0	40,417	17	0	511,422	38	551,894
<i>Pipelines</i>	1,045	525	0	0			1,571
<b>Total</b>	1,045	40,942	17	0	511,422	38	553,464
<b>Sonoma</b>							
<i>Facilities</i>	0	11,338	0	0	40,012	12	51,361
<i>Pipelines</i>	227	114	0	0			341
<b>Total</b>	227	11,452	0	0	40,012	12	51,702
<b>Stanislaus</b>							
<i>Facilities</i>	0	11,878	0	0	78,971	67	90,917
<i>Pipelines</i>	364	183	0	0			547
<b>Total</b>	364	12,061	0	0	78,971	67	91,464
<b>Sutter</b>							
<i>Facilities</i>	0	246	0	0	6,808	1	7,055
<i>Pipelines</i>	33	16	0	0			49
<b>Total</b>	33	262	0	0	6,808	1	7,104

	Potable Water	Waste Water	Oil Systems	Natural Gas	Electric Power	Communication	Total
<b>Tulare</b>							
<i>Facilities</i>	28	369	0	0	2,105	2	2,504
<i>Pipelines</i>	112	56	0	0			168
<b>Total</b>	140	425	0	0	2,105	2	2,672
<b>Tuolumne</b>							
<i>Facilities</i>	0	123	0	0	16,265	1	16,390
<i>Pipelines</i>	50	25	0	0			75
<b>Total</b>	50	148	0	0	16,265	1	16,465
<b>Yolo</b>							
<i>Facilities</i>	0	6,097	0	0	6,937	12	13,047
<i>Pipelines</i>	134	67	0	0			201
<b>Total</b>	134	6,165	0	0	6,937	12	13,248
<b>Yuba</b>							
<i>Facilities</i>	0	371	0	0	840	0	1,212
<i>Pipelines</i>	24	12	0	0			37
<b>Total</b>	24	384	0	0	840	0	1,249
<b>Total</b>	<b>117,874</b>	<b>1,057,391</b>	<b>116</b>	<b>302</b>	<b>6,031,372</b>	<b>3,790</b>	<b>7,210,845</b>
<b>Region Total</b>	<b>117,874</b>	<b>1,057,391</b>	<b>116</b>	<b>302</b>	<b>6,031,372</b>	<b>3,790</b>	<b>7,210,845</b>

Totals only reflect data for those census tracts/blocks included in the user's study region and will reflect the entire county/state only if all of the census blocks for that county/states were selected at the time of study region creation.

## Hazus Quick Assessment Report

### Estimated Economic Loss (\$ Billions)

Category	Description	Range
General Building Stock	Building Damage	16.90 - 67.50
	Building Contents	2.10 - 8.30
	Business Interruption	3.20 - 13.00
Infrastructure	Lifelines Damage	
<b>Total</b>		27.00 - 108.20

### Preliminary Damage Assessment (PDA) Estimates

Description	Residential	Commercial	Other	Total
Affected	586,700	41,100	20,800	648,600
Minor	76,500	18,800	9,600	104,900
Major	7,200	3,900	2,100	13,200
Destroyed	870	750	350	1,970
<b>Total</b>	671,270	64,550	32,850	768,670

### Estimated Casualties : Night Time

Severity Level	Description	# Persons
Level 1	Medical Aid	1,500 - 6,000
Level 2	Hospital Care	170 - 700
Level 3	Life-threatening	20 - 60
Level 4	Fatalities	30 - 110

### Estimated Shelter Needs

Type	Households	People
Displaced Households	7,000 - 30,000	17,500 - 75,000
Public Shelter	3,070	7,670

Comments :

\*Hazus damage estimates are presented using FEMA Preliminary Damage Assessment (PDA) categories. These estimates should be used for planning purposes and may not reflect actual observed damages from the PDA process.

**Disclaimer:**

The estimates of social and economic impacts contained in this report were produced using HAZUS loss estimation methodology software which is based on current scientific and engineering knowledge. There are uncertainties inherent in any loss estimation technique. Therefore, there may be significant differences between the modeled results contained in this report and the actual social and economic losses following a specific earthquake. These results can be improved by using enhanced inventory, geotechnical, and observed ground motion data.

### Earthquake Information

Location :

Origin Time:

Magnitude : 7.43

Epicenter Latitude/Longitude :  
/

Depth & Type : /U

Name :  
NA

Ground Motion /Attenuation :

Maximum PGA: 1.00

Information Sources:

Comments :

### Population and Building Exposure

Population: 16,846,162

### Building Exposure : (\$ Millions)

Residential	2,085,441
Commercial	567,475
Other	509,133
<b>Total</b>	<b>3,162,049</b>

Counties : See Appendix

Major Metro Area :

## Hazus Quick Assessment Report

### Estimated Economic Loss (\$ Billions)

Category	Description	Range
General Building Stock	Building Damage	16.90 - 67.50
	Building Contents	2.10 - 8.30
	Business Interruption	3.20 - 13.00
Infrastructure	Lifelines Damage	
<b>Total</b>		27.00 - 108.20

### Preliminary Damage Assessment (PDA) Estimates

Description	Residential	Commercial	Other	Total
Affected	586,700	41,100	20,800	648,600
Minor	76,500	18,800	9,600	104,900
Major	7,200	3,900	2,100	13,200
Destroyed	870	750	350	1,970
<b>Total</b>	671,270	64,550	32,850	768,670

### Estimated Casualties : Day Time

Severity Level	Description	# Persons
Level 1	Medical Aid	3,000 - 12,000
Level 2	Hospital Care	500 - 1,900
Level 3	Life-threatening	60 - 200
Level 4	Fatalities	100 - 400

### Estimated Shelter Needs

Type	Households	People
Displaced Households	7,000 - 30,000	17,500 - 75,000
Public Shelter	3,070	7,670

Comments :

\*Hazus damage estimates are presented using FEMA Preliminary Damage Assessment (PDA) categories. These estimates should be used for planning purposes and may not reflect actual observed damages from the PDA process.

**Disclaimer:**

The estimates of social and economic impacts contained in this report were produced using HAZUS loss estimation methodology software which is based on current scientific and engineering knowledge. There are uncertainties inherent in any loss estimation technique. Therefore, there may be significant differences between the modeled results contained in this report and the actual social and economic losses following a specific earthquake. These results can be improved by using enhanced inventory, geotechnical, and observed ground motion data.

### Earthquake Information

Location :

Origin Time:

Magnitude : 7.43

Epicenter Latitude/Longitude :  
/

Depth & Type : /U

Name :  
NA

Ground Motion /Attenuation :

Maximum PGA: 1.00

Information Sources:

Comments :

### Population and Building Exposure

Population: 16,846,162

### Building Exposure : (\$ Millions)

Residential	2,085,441
Commercial	567,475
Other	509,133
<b>Total</b>	<b>3,162,049</b>

Counties : See Appendix

Major Metro Area :

## Hazus Quick Assessment Report

### Estimated Economic Loss (\$ Billions)

Category	Description	Range
General Building Stock	Building Damage	16.90 - 67.50
	Building Contents	2.10 - 8.30
	Business Interruption	3.20 - 13.00
Infrastructure	Lifelines Damage	
<b>Total</b>		27.00 - 108.20

### Preliminary Damage Assessment (PDA) Estimates

Description	Residential	Commercial	Other	Total
Affected	586,700	41,100	20,800	648,600
Minor	76,500	18,800	9,600	104,900
Major	7,200	3,900	2,100	13,200
Destroyed	870	750	350	1,970
<b>Total</b>	671,270	64,550	32,850	768,670

### Estimated Casualties : Commute Time

Severity Level	Description	# Persons
Level 1	Medical Aid	2,000 - 8,000
Level 2	Hospital Care	400 - 1,600
Level 3	Life-threatening	160 - 700
Level 4	Fatalities	90 - 400

### Estimated Shelter Needs

Type	Households	People
Displaced Households	7,000 - 30,000	17,500 - 75,000
Public Shelter	3,070	7,670

Comments :

\*Hazus damage estimates are presented using FEMA Preliminary Damage Assessment (PDA) categories. These estimates should be used for planning purposes and may not reflect actual observed damages from the PDA process.

#### Disclaimer:

The estimates of social and economic impacts contained in this report were produced using HAZUS loss estimation methodology software which is based on current scientific and engineering knowledge. There are uncertainties inherent in any loss estimation technique. Therefore, there may be significant differences between the modeled results contained in this report and the actual social and economic losses following a specific earthquake. These results can be improved by using enhanced inventory, geotechnical, and observed ground motion data.

### Earthquake Information

Location :

Origin Time:

Magnitude : 7.43

Epicenter Latitude/Longitude :  
/

Depth & Type : /U

Name :  
NA

Ground Motion /Attenuation :

Maximum PGA: 1.00

Information Sources:

Comments :

### Population and Building Exposure

Population: 16,846,162

#### Building Exposure : (\$ Millions)

Residential	2,085,441
Commercial	567,475
Other	509,133
<b>Total</b>	<b>3,162,049</b>

Counties : See Appendix

Major Metro Area :

## Shelter Summary Report

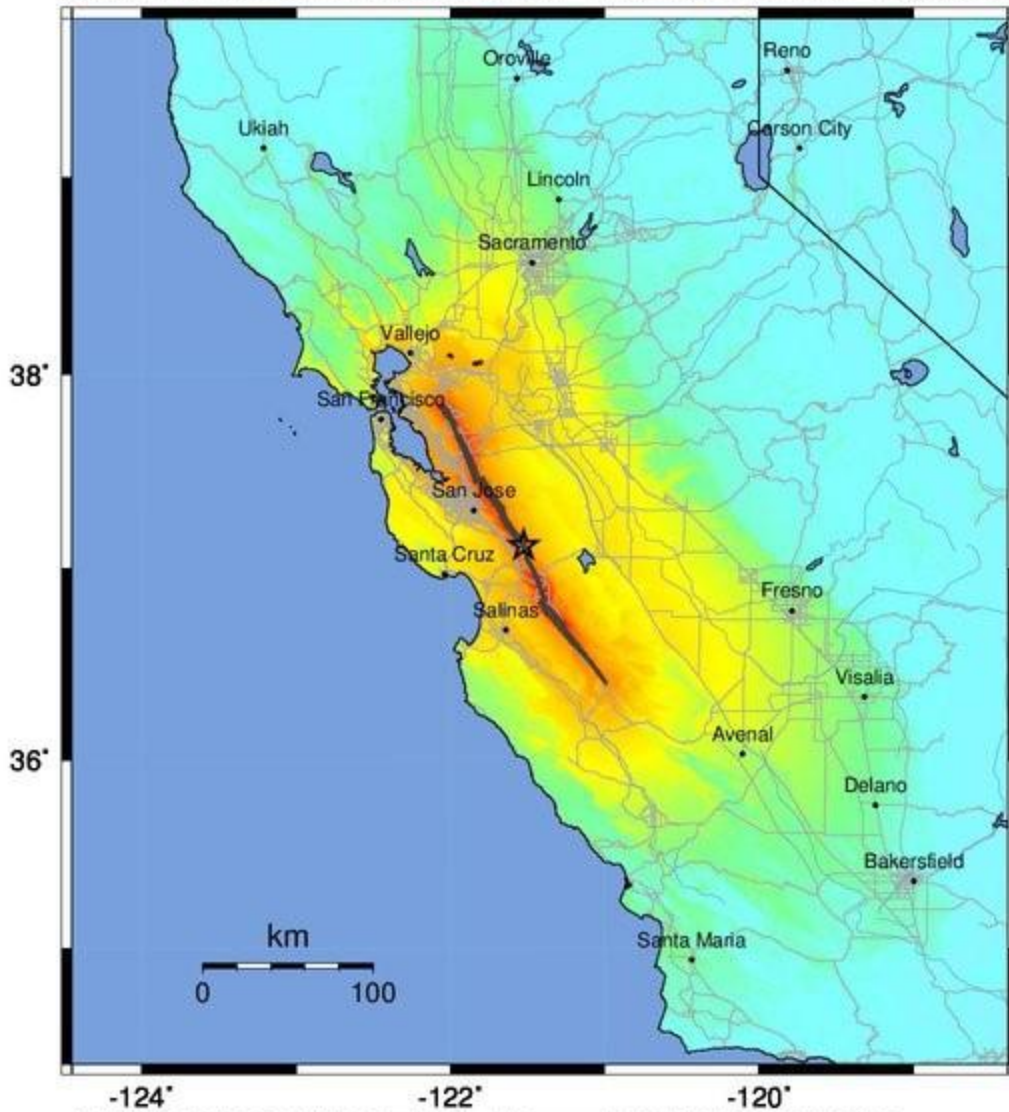
May 20, 2024

	# of Displaced Households	# of People Needing Short Term Shelter
<b>California</b>		
Fresno	0	0
Butte	0	0
Alameda	8,073	4,299
Solano	29	15
San Mateo	100	50
Tuolumne	0	0
Kings	0	0
San Joaquin	12	8
San Luis Obispo	0	0
Nevada	0	0
Madera	0	0
Tulare	0	0
Colusa	0	0
Napa	1	0
Mendocino	0	0
Contra Costa	1,673	692
El Dorado	0	0
Kern	0	0
Amador	0	0
Santa Cruz	63	44
Lake	0	0
Monterey	117	87
Sacramento	0	0
Mariposa	0	0
Yolo	0	0
Calaveras	0	0
Yuba	0	0
Glenn	0	0
Alpine	0	0
Stanislaus	2	1
Sonoma	0	0
Santa Barbara	0	0

	# of Displaced Households	# of People Needing Short Term Shelter
Santa Clara	2,904	1,669
San Benito	140	86
San Francisco	1,717	718
Merced	1	1
Placer	0	0
Marin	1	0
Sutter	0	0
<b>Total</b>	<b>14,834</b>	<b>7,670</b>
<b>Region Total</b>	<b>14,834</b>	<b>7,670</b>

*Totals only reflect data for those census tracts/blocks included in the user's study region and will reflect the entire county/state only if all of the census blocks for that county/states were selected at the time of study region creation.*

-- Earthquake Planning Scenario --  
 ShakeMap for Calaveras: CN+CC+CS+CE - Median ground motions Scenario  
 Scenario Date: Jun 30, 2017 10:03:48 AM MDT M 7.4 N37.12 W121.53 Depth: 8.9km



-124°                      -122°                      -120°  
 PLANNING SCENARIO ONLY -- Map Version 14 Processed 2017-07-03 08:06:06 AM MDT

PERCEIVED SHAKING	Not felt	Weak	Light	Moderate	Strong	Very strong	Severe	Violent	Extreme
POTENTIAL DAMAGE	none	none	none	Very light	Light	Moderate	Mod./Heavy	Heavy	Very Heavy
PEAK ACC. (%g)	<0.05	0.3	2.8	6.2	12	22	40	75	>139
PEAK VEL. (cm/s)	<0.02	0.1	1.4	4.7	9.6	20	41	86	>178
INSTRUMENTAL INTENSITY	I	II-III	IV	V	VI	VII	VIII	IX	X+

Scale based upon Worden et al. (2012)