
Hazus: Earthquake Global Risk Report

Region Name: CalaverasCCCSCE

Earthquake Scenario: calaverascccsceshaw0_m7p26_se

Print Date: November 08, 2024

Disclaimer:

Totals only reflect data for those census tracts/blocks included in the user's study region.

The estimates of social and economic impacts contained in this report were produced using Hazus loss estimation methodology software which is based on current scientific and engineering knowledge. There are uncertainties inherent in any loss estimation technique. Therefore, there may be significant differences between the modeled results contained in this report and the actual social and economic losses following a specific earthquake. These results can be improved by using enhanced inventory, geotechnical, and observed ground motion data.

Table of Contents

Section	Page #
General Description of the Region	3
Building and Lifeline Inventory	4
Building Inventory	
Critical Facility Inventory	
Transportation and Utility Lifeline Inventory	
Earthquake Scenario Parameters	7
Direct Earthquake Damage	8
Buildings Damage	
Essential Facilities Damage	
Transportation and Utility Lifeline Damage	
Induced Earthquake Damage	14
Fire Following Earthquake	
Debris Generation	
Social Impact	15
Shelter Requirements	
Casualties	
Economic Loss	17
Building Related Losses	
Transportation and Utility Lifeline Losses	
Appendix A: County Listing for the Region	
Appendix B: Regional Population and Building Value Data	

General Description of the Region

Hazus-MH is a regional earthquake loss estimation model that was developed by the Federal Emergency Management Agency (FEMA) and the National Institute of Building Sciences. The primary purpose of Hazus is to provide a methodology and software application to develop multi-hazard losses at a regional scale. These loss estimates would be used primarily by local, state and regional officials to plan and stimulate efforts to reduce risks from multi-hazards and to prepare for emergency response and recovery.

The earthquake loss estimates provided in this report was based on a region that includes 34 county(ies) from the following state(s):

California

Note:

Appendix A contains a complete listing of the counties contained in the region.

The geographical size of the region is 60,182.10 square miles and contains 3,779 census tracts. There are over 5,658 thousand households in the region which has a total population of 16,410,567 people. The distribution of population by Total Region and County is provided in Appendix B.

There are an estimated 5,044 thousand buildings in the region with a total building replacement value (excluding contents) of (millions of dollars). Approximately 90.00 % of the buildings (and % of the building value) are associated with residential housing.

The replacement value of the transportation and utility lifeline systems is estimated to be 257,906 and 199,969 (millions of dollars) , respectively.

Building and Lifeline Inventory

Building Inventory

Hazus estimates that there are 5,044 thousand buildings in the region which have an aggregate total replacement value of (millions of dollars) . Appendix B provides a general distribution of the building value by Total Region and County.

In terms of building construction types found in the region, wood frame construction makes up 87% of the building inventory. The remaining percentage is distributed between the other general building types.

Critical Facility Inventory

Hazus breaks critical facilities into two (2) groups: essential facilities and high potential loss facilities (HPL). Essential facilities include hospitals, medical clinics, schools, fire stations, police stations and emergency operations facilities. High potential loss facilities include dams, levees, military installations, nuclear power plants and hazardous material sites.

For essential facilities, there are 273 hospitals in the region with a total bed capacity of 42,831 beds. There are 5,998 schools, 1,522 fire stations, 534 police stations and 92 emergency operation facilities. With respect to high potential loss facilities (HPL), there are no dams identified within the inventory. The inventory also includes no hazardous material sites, no military installations and no nuclear power plants.

Transportation and Utility Lifeline Inventory

Within Hazus, the lifeline inventory is divided between transportation and utility lifeline systems. There are seven (7) transportation systems that include highways, railways, light rail, bus, ports, ferry and airports. There are six (6) utility systems that include potable water, wastewater, natural gas, crude & refined oil, electric power and communications. The lifeline inventory data are provided in Tables 1 and 2.

The total value of the lifeline inventory is over 457,875.00 (millions of dollars). This inventory includes over 11,702.28 miles of highways, 12,148 bridges, 260,324.00 miles of pipes.

Table 1: Transportation System Lifeline Inventory

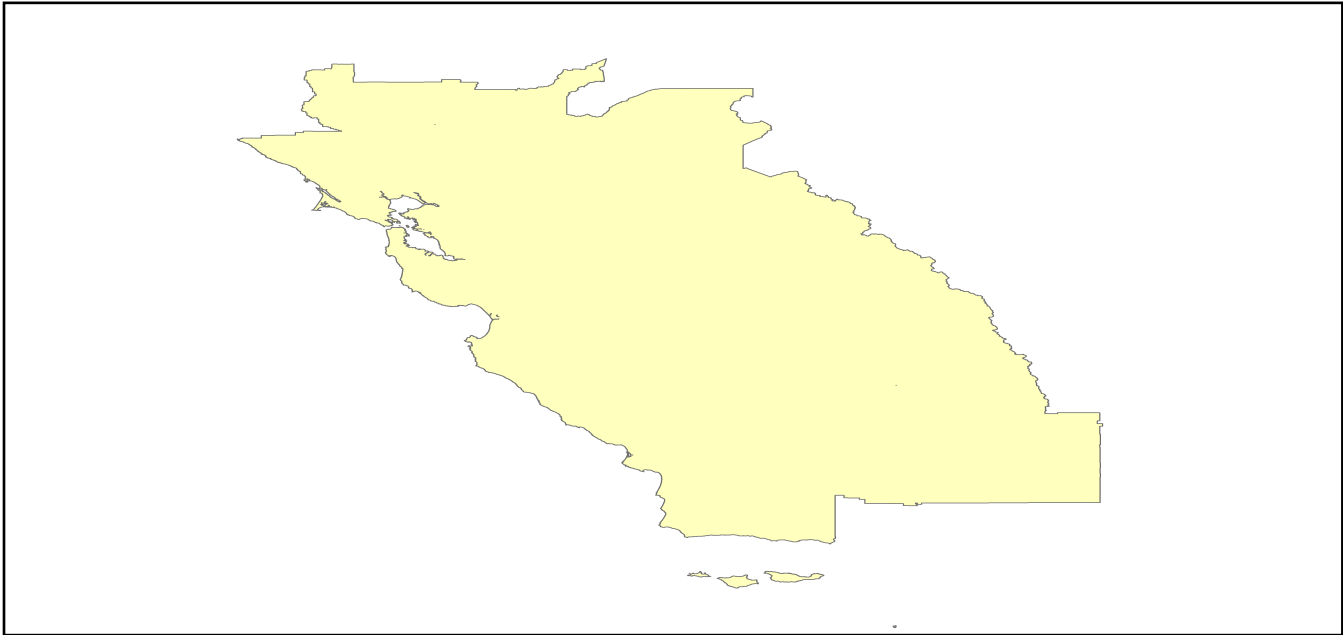
System	Component	# Locations/ # Segments	Replacement value (millions of dollars)
Highway	Bridges	12,148	60018.2545
	Segments	7,786	102106.8742
	Tunnels	50	1006.9400
	Subtotal		163132.0687
Railways	Bridges	1,808	10287.5200
	Facilities	99	263.6370
	Segments	3,407	68256.7882
	Tunnels	3	1.8495
	Subtotal		78809.7947
Light Rail	Bridges	112	15.3529
	Facilities	255	4154.0000
	Segments	15	5403.2756
	Tunnels	0	0.0000
	Subtotal		9572.6285
Bus	Facilities	58	129.9869
	Subtotal		129.9869
Ferry	Facilities	28	37.2680
	Subtotal		37.2680
Port	Facilities	368	1402.7588
	Subtotal		1402.7588
Airport	Facilities	126	3001.0193
	Runways	181	1821.4019
	Subtotal		4822.4212
		Total	257,906.90

Table 2: Utility System Lifeline Inventory

System	Component	# Locations / Segments	Replacement value (millions of dollars)
Potable Water	Distribution Lines	NA	5171.5167
	Facilities	27	1060.9380
	Pipelines	0	0.0000
		Subtotal	6232.4547
Waste Water	Distribution Lines	NA	3102.9100
	Facilities	185	31811.0830
	Pipelines	0	0.0000
		Subtotal	34913.9930
Natural Gas	Distribution Lines	NA	2068.6067
	Facilities	19	746.9647
	Pipelines	986	18422.3605
		Subtotal	21237.9319
Oil Systems	Facilities	34	4.0120
	Pipelines	0	0.0000
		Subtotal	4.0120
Electrical Power	Facilities	539	137517.1974
		Subtotal	137517.1974
Communication	Facilities	545	64.3100
		Subtotal	64.3100
	Total		199,969.90

Earthquake Scenario

Hazus uses the following set of information to define the earthquake parameters used for the earthquake loss estimate provided in this report.



Scenario Name	calaverasccccscshaw0_m7p26_se
Type of Earthquake	User-defined
Fault Name	NA
Historical Epicenter ID #	NA
Probabilistic Return Period	NA
Longitude of Epicenter	NA
Latitude of Epicenter	NA
Earthquake Magnitude	7.26
Depth (km)	NA
Rupture Length (Km)	NA
Rupture Orientation (degrees)	NA
Attenuation Function	NA

Direct Earthquake Damage

Building Damage

Hazus estimates that about 45,553 buildings will be at least moderately damaged. This is over 1.00 % of the buildings in the region. There are an estimated 708 buildings that will be damaged beyond repair. The definition of the 'damage states' is provided in Volume 1: Chapter 5 of the Hazus technical manual. Table 3 below summarizes the expected damage by general occupancy for the buildings in the region. Table 4 below summarizes the expected damage by general building type.

Damage Categories by General Occupancy Type

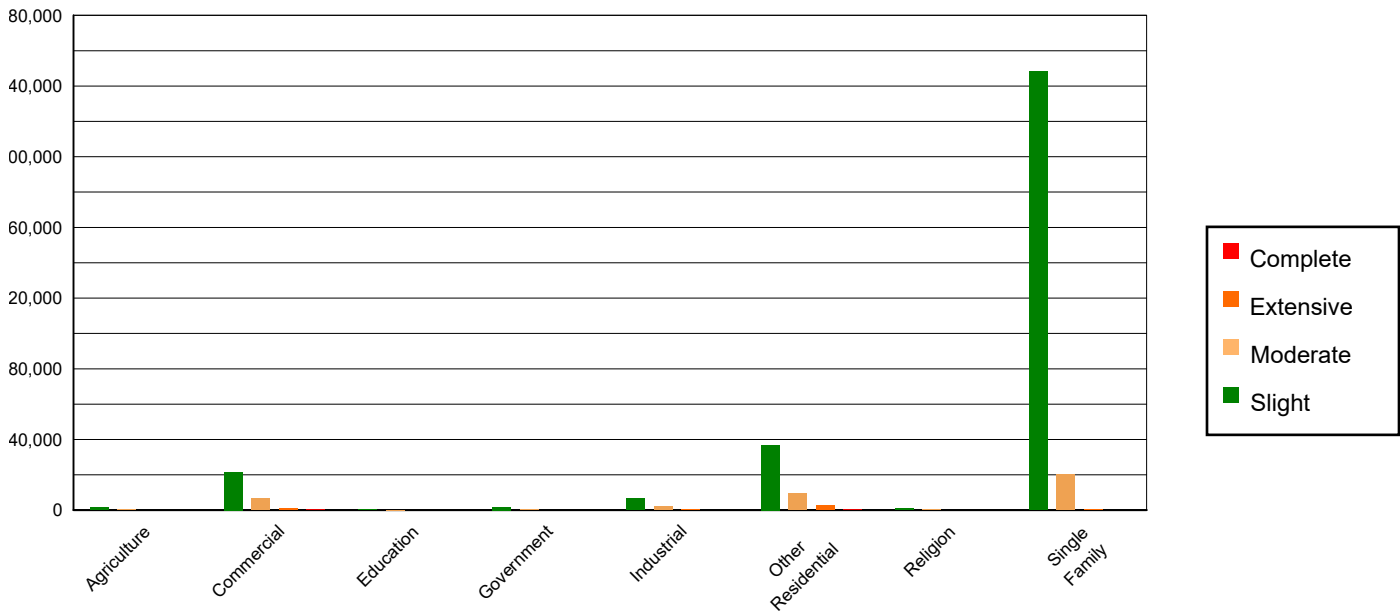


Table 3: Expected Building Damage by Occupancy

	None		Slight		Moderate		Extensive		Complete	
	Count	(%)	Count	(%)	Count	(%)	Count	(%)	Count	(%)
Agriculture	34179.18	0.73	1324.17	0.42	465.35	1.16	75.82	1.66	12.48	1.76
Commercial	293042.43	6.26	21643.49	6.81	6762.64	16.79	1062.19	23.31	273.24	38.55
Education	9596.07	0.21	389.38	0.12	83.25	0.21	10.54	0.23	3.76	0.53
Government	20736.08	0.44	1765.14	0.56	396.24	0.98	41.09	0.90	11.46	1.62
Industrial	80372.04	1.72	6682.96	2.10	2335.68	5.80	360.22	7.90	73.09	10.31
Other Residential	604464.62	12.91	36837.55	11.58	9654.67	23.96	2769.66	60.77	300.49	42.39
Religion	18016.69	0.38	1031.56	0.32	346.76	0.86	55.23	1.21	16.77	2.37
Single Family	3620109.95	77.34	248358.26	78.09	20242.26	50.25	182.94	4.01	17.59	2.48
Total	4,680,517		318,033		40,287		4,558		709	

Table 4: Expected Building Damage by Building Type (All Design Levels)

	None		Slight		Moderate		Extensive		Complete	
	Count	(%)	Count	(%)	Count	(%)	Count	(%)	Count	(%)
Wood	4076147.91	87.09	274369.29	86.27	21365.94	53.03	148.61	3.26	6.84	0.97
Steel	102641.16	2.19	8630.91	2.71	4253.51	10.56	798.79	17.53	170.82	24.10
Concrete	116064.61	2.48	9188.96	2.89	2766.36	6.87	626.52	13.75	164.40	23.19
Precast	61221.82	1.31	5481.39	1.72	2184.07	5.42	134.62	2.95	8.76	1.24
RM	178372.90	3.81	8350.00	2.63	2656.18	6.59	141.54	3.11	1.71	0.24
URM	37702.94	0.81	6450.48	2.03	1708.77	4.24	387.27	8.50	152.72	21.54
MH	108365.72	2.32	5561.48	1.75	5352.02	13.28	2320.34	50.91	203.65	28.73
Total	4,680,517		318,033		40,287		4,558		709	

*Note:

- RM Reinforced Masonry
- URM Unreinforced Masonry
- MH Manufactured Housing

Essential Facility Damage

Before the earthquake, the region had 42,831 hospital beds available for use. On the day of the earthquake, the model estimates that only 40,330 hospital beds (94.00%) are available for use by patients already in the hospital and those injured by the earthquake. After one week, 98.00% of the beds will be back in service. By 30 days, 100.00% will be operational.

Table 5: Expected Damage to Essential Facilities

Classification	Total	# Facilities		
		At Least Moderate Damage > 50%	Complete Damage > 50%	With Functionality > 50% on day 1
Hospitals	273	2	0	267
Schools	5,998	89	0	5,748
EOCs	92	1	0	89
PoliceStations	534	5	0	517
FireStations	1,522	9	0	1,488

Transportation Lifeline Damage

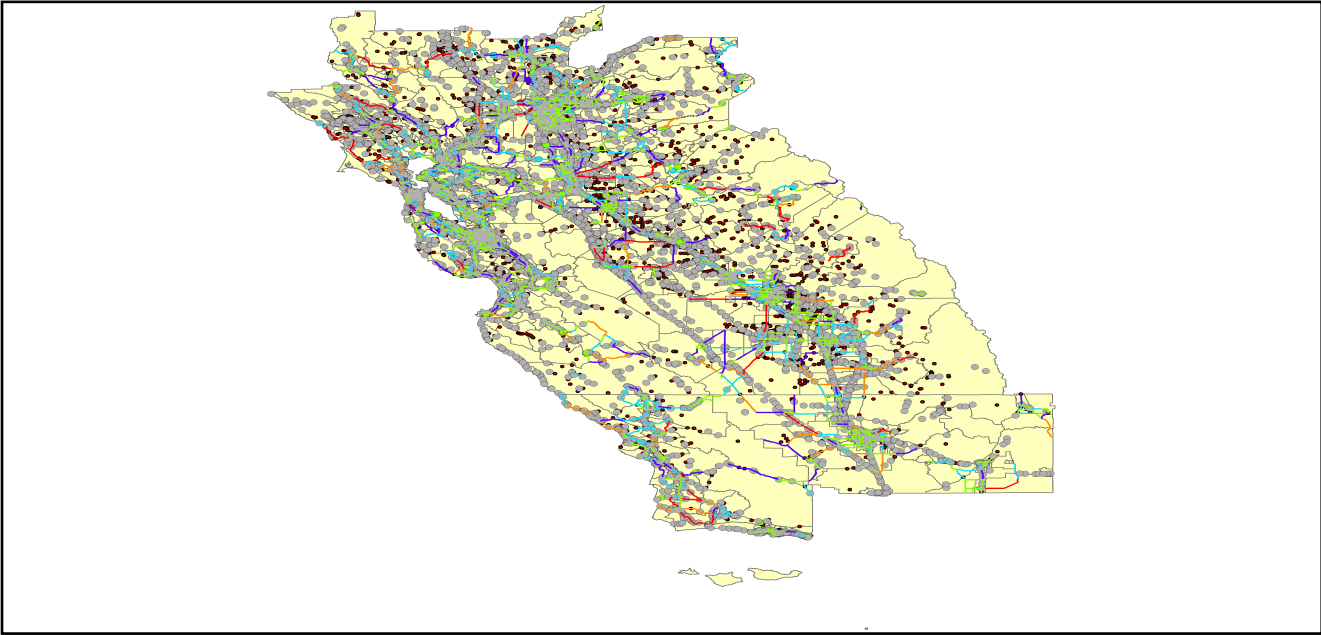


Table 6: Expected Damage to the Transportation Systems

System	Component	Number of Locations_				
		Locations/ Segments	With at Least Mod. Damage	With Complete Damage	With Functionality > 50 %	
					After Day 1	After Day 7
Highway	Segments	7,786	0	0	7,786	7,786
	Bridges	12,148	5	0	12,144	12,146
	Tunnels	50	0	0	50	50
Railways	Segments	3,407	0	0	3,407	3,407
	Bridges	1,808	0	0	1,808	1,808
	Tunnels	3	0	0	3	3
	Facilities	99	0	0	99	99
Light Rail	Segments	15	0	0	15	15
	Bridges	112	0	0	112	112
	Tunnels	0	0	0	0	0
	Facilities	255	0	0	255	255
Bus	Facilities	58	0	0	58	58
Ferry	Facilities	28	0	0	28	28
Port	Facilities	368	0	0	368	368
Airport	Facilities	126	2	0	126	126
	Runways	181	0	0	181	181

Table 6 provides damage estimates for the transportation system.

Note: Roadway segments, railroad tracks and light rail tracks are assumed to be damaged by ground failure only. If ground failure maps are not provided, damage estimates to these components will not be computed.

Tables 7-9 provide information on the damage to the utility lifeline systems. Table 7 provides damage to the utility system facilities. Table 8 provides estimates on the number of leaks and breaks by the pipelines of the utility systems. For electric power and potable water, Hazus performs a simplified system performance analysis. Table 9 provides a summary of the system performance information.

Table 7 : Expected Utility System Facility Damage

System	# of Locations				
	Total #	With at Least Moderate Damage	With Complete Damage	with Functionality > 50 %	
				After Day 1	After Day 7
Potable Water	27	0	0	25	27
Waste Water	185	1	0	178	185
Natural Gas	19	0	0	19	19
Oil Systems	34	0	0	34	34
Electrical Power	539	23	0	520	538
Communication	545	17	0	536	545

Table 8 : Expected Utility System Pipeline Damage (Site Specific)

System	Total Pipelines Length (miles)	Number of Leaks	Number of Breaks
Potable Water	160,672	5573	1393
Waste Water	96,403	2800	700
Natural Gas	3,250	0	0
Oil	0	0	0

Table 9: Expected Potable Water and Electric Power System Performance

	Total # of Households	Number of Households without Service				
		At Day 1	At Day 3	At Day 7	At Day 30	At Day 90
Potable Water	5,658,917	161,579	135,654	93,104	0	0
Electric Power		177,775	109,176	42,195	3,355	244

Induced Earthquake Damage

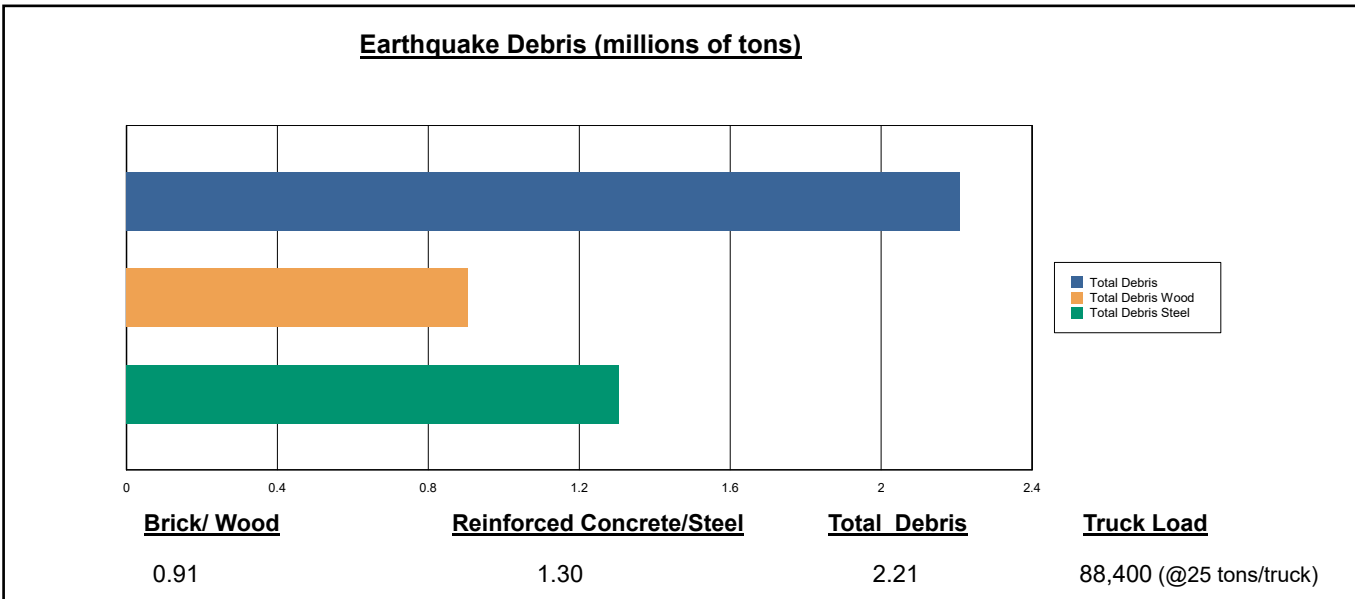
Fire Following Earthquake

Fires often occur after an earthquake. Because of the number of fires and the lack of water to fight the fires, they can often burn out of control. Hazus uses a Monte Carlo simulation model to estimate the number of ignitions and the amount of burnt area. For this scenario, the model estimates that there will be 66 ignitions that will burn about 2.11 sq. mi 0.00 % of the region's total area.) The model also estimates that the fires will displace about 20,011 people and burn about 2,896 (millions of dollars) of building value.

Debris Generation

Hazus estimates the amount of debris that will be generated by the earthquake. The model breaks the debris into two general categories: a) Brick/Wood and b) Reinforced Concrete/Steel. This distinction is made because of the different types of material handling equipment required to handle the debris.

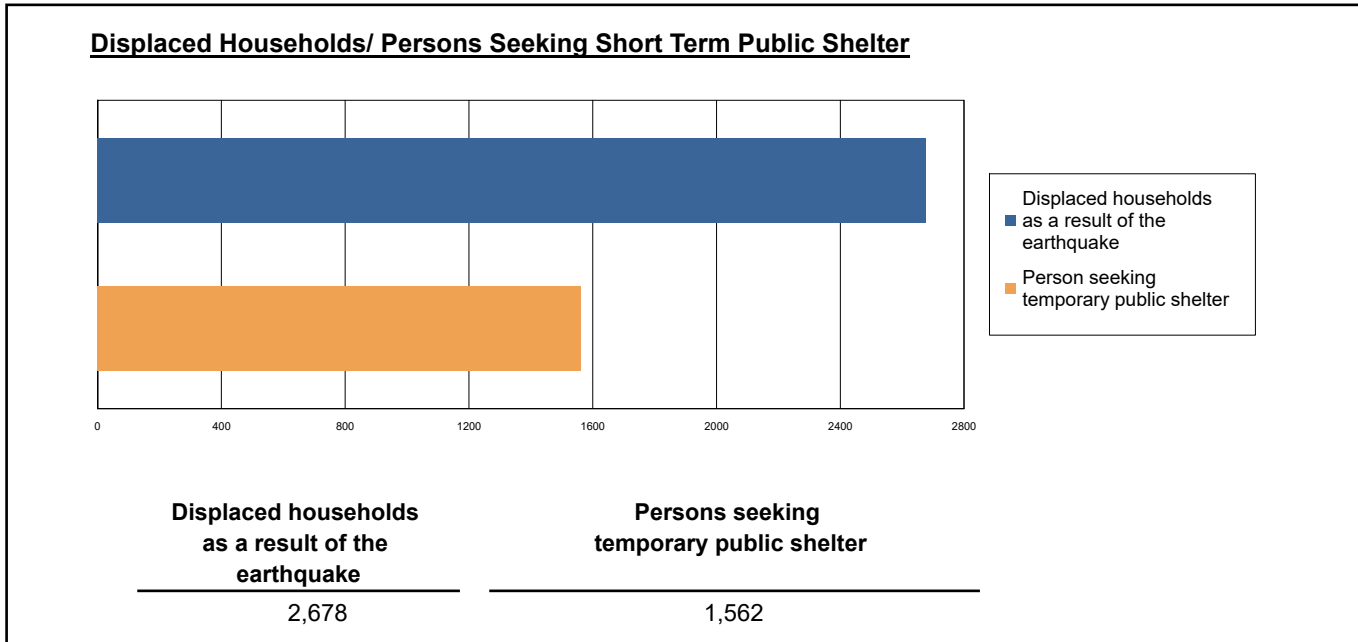
The model estimates that a total of 2,210,000 tons of debris will be generated. Of the total amount, Brick/Wood comprises 41.00% of the total, with the remainder being Reinforced Concrete/Steel. If the debris tonnage is converted to an estimated number of truckloads, it will require 88,400 truckloads (@25 tons/truck) to remove the debris generated by the earthquake.



Social Impact

Shelter Requirement

Hazus estimates the number of households that are expected to be displaced from their homes due to the earthquake and the number of displaced people that will require accommodations in temporary public shelters. The model estimates 2,678 households to be displaced due to the earthquake. Of these, 1,562 people (out of a total population of 16,410,567) will seek temporary shelter in public shelters.



Casualties

Hazus estimates the number of people that will be injured and killed by the earthquake. The casualties are broken down into four (4) severity levels that describe the extent of the injuries. The levels are described as follows;

- Severity Level 1: Injuries will require medical attention but hospitalization is not needed.
- Severity Level 2: Injuries will require hospitalization but are not considered life-threatening
- Severity Level 3: Injuries will require hospitalization and can become life threatening if not promptly treated.
- Severity Level 4: Victims are killed by the earthquake.

The casualty estimates are provided for three (3) times of day: 2:00 AM, 2:00 PM and 5:00 PM. These times represent the periods of the day that different sectors of the community are at their peak occupancy loads. The 2:00 AM estimate considers that the residential occupancy load is maximum, the 2:00 PM estimate considers that the educational, commercial and industrial sector loads are maximum and 5:00 PM represents peak commute time.

Table 10 provides a summary of the casualties estimated for this earthquake

Table 10: Casualty Estimates

		Level 1	Level 2	Level 3	Level 4
2 AM	Commercial	17.52	2.87	0.33	0.65
	Commuting	0.22	0.29	0.49	0.10
	Educational	0.00	0.00	0.00	0.00
	Hotels	0.78	0.08	0.00	0.01
	Industrial	25.89	3.80	0.38	0.75
	Other-Residential	615.42	90.04	9.44	18.32
	Single Family	579.95	23.90	0.45	0.87
	Total	1,240	121	11	21
	2 PM	Commercial	1191.39	198.03	23.17
Commuting		1.99	2.59	4.45	0.86
Educational		320.14	55.20	7.04	13.76
Hotels		0.15	0.01	0.00	0.00
Industrial		189.53	27.97	2.85	5.51
Other-Residential		189.71	29.53	3.36	6.28
Single Family		155.41	6.80	0.17	0.30
Total		2,048	320	41	72
5 PM		Commercial	853.69	143.37	16.95
	Commuting	40.33	52.28	90.07	17.35
	Educational	42.37	6.54	0.79	1.53
	Hotels	0.23	0.02	0.00	0.00
	Industrial	118.46	17.48	1.78	3.44
	Other-Residential	231.31	34.96	3.84	7.17
	Single Family	211.43	9.20	0.21	0.37
	Total	1,498	264	114	62

Economic Loss

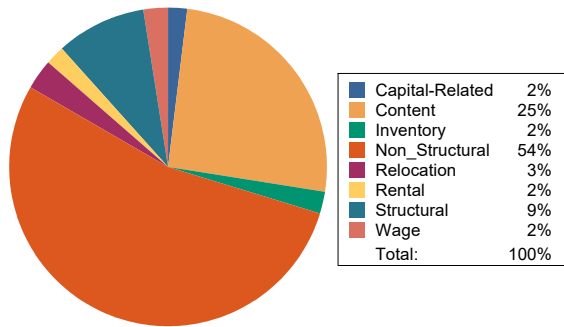
The total economic loss estimated for the earthquake is 28,323.48 (millions of dollars), which includes building and lifeline related losses based on the region's available inventory. The following three sections provide more detailed information about these losses.

Building-Related Losses

The building losses are broken into two categories: direct building losses and business interruption losses. The direct building losses are the estimated costs to repair or replace the damage caused to the building and its contents. The business interruption losses are the losses associated with inability to operate a business because of the damage sustained during the earthquake. Business interruption losses also include the temporary living expenses for those people displaced from their homes because of the earthquake.

The total building-related losses were 23,876.18 (millions of dollars); 9 % of the estimated losses were related to the business interruption of the region. By far, the largest loss was sustained by the residential occupancies which made up over 48 % of the total loss. Table 11 below provides a summary of the losses associated with the building damage.

Earthquake Losses by Loss Type (\$ millions)



Earthquake Losses by Occupancy Type (\$ millions)

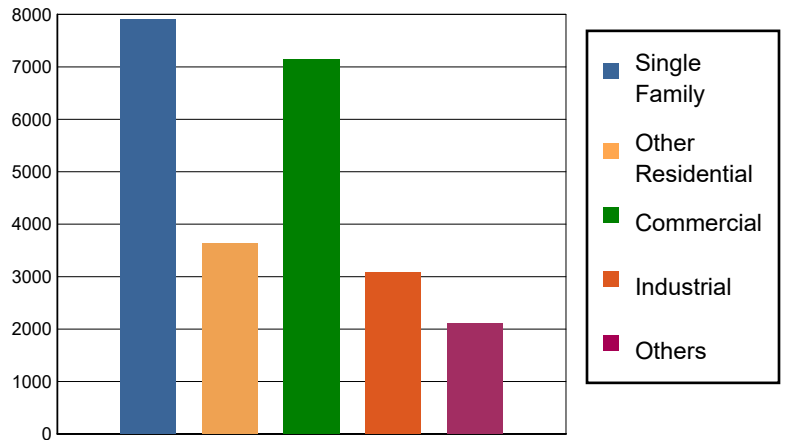


Table 11: Building-Related Economic Loss Estimates
(Millions of dollars)

Category	Area	Single Family	Other Residential	Commercial	Industrial	Others	Total
Income Losses							
	Wage	0.0000	38.7836	456.3699	25.0398	49.4582	569.6515
	Capital-Related	0.0000	16.4898	441.3198	15.2222	9.9249	482.9567
	Rental	50.6906	141.2421	241.9494	15.4241	22.4625	471.7687
	Relocation	141.8428	86.3244	303.3480	66.3619	119.7662	717.6433
	Subtotal	192.5334	282.8399	1442.9871	122.0480	201.6118	2242.0202
Capital Stock Losses							
	Structural	755.1657	351.6636	655.9064	255.0826	219.0642	2,236.8825
	Non_Structural	5012.3606	2332.3910	2947.4229	1481.4904	1023.0750	12,796.7399
	Content	1946.8405	668.0113	1776.1419	1073.8588	602.9950	6,067.8475
	Inventory	0.0000	0.0000	320.0843	153.8973	58.7064	532.6880
	Subtotal	7714.3668	3352.0659	5699.5555	2964.3291	1903.8406	21634.1579
	Total	7906.90	3634.91	7142.54	3086.38	2105.45	23876.18

Transportation and Utility Lifeline Losses

For the transportation and utility lifeline systems, Hazus computes the direct repair cost for each component only. There are no losses computed by Hazus for business interruption due to lifeline outages. Tables 12 & 13 provide a detailed breakdown in the expected lifeline losses.

Table 12: Transportation System Economic Losses
(Millions of dollars)

System	Component	Inventory Value	Economic Loss	Loss Ratio (%)
Highway	Segments	102106.8742	0.0000	0.00
	Bridges	60018.2545	235.0112	0.39
	Tunnels	1006.9400	0.2089	0.02
	Subtotal	163132.0687	235.2201	
Railways	Segments	68256.7882	0.0000	0.00
	Bridges	10287.5200	18.0124	0.18
	Tunnels	1.8495	0.0001	0.01
	Facilities	263.6370	10.3435	3.92
	Subtotal	78809.7947	28.3560	
Light Rail	Segments	5403.2756	0.0000	0.00
	Bridges	15.3529	0.0355	0.23
	Tunnels	0.0000	0.0000	0.00
	Facilities	4154.0000	254.9636	6.14
	Subtotal	9572.6285	254.9991	
Bus	Facilities	129.9869	4.1651	3.20
	Subtotal	129.9869	4.1651	
Ferry	Facilities	37.2680	1.1601	3.11
	Subtotal	37.2680	1.1601	
Port	Facilities	1402.7588	56.9269	4.06
	Subtotal	1402.7588	56.9269	
Airport	Facilities	3001.0193	209.5945	6.98
	Runways	1821.4019	0.0000	0.00
	Subtotal	4822.4212	209.5945	
Total		257,906.93	790.42	

Table 13: Utility System Economic Losses

(Millions of dollars)

System	Component	Inventory Value	Economic Loss	Loss Ratio (%)
Potable Water	Pipelines	0.0000	0.0000	0.00
	Facilities	1060.9380	16.7493	1.58
	Distribution Lines	5171.5167	25.0797	0.48
	Subtotal	6232.4547	41.8290	
Waste Water	Pipelines	0.0000	0.0000	0.00
	Facilities	31811.0830	383.0811	1.20
	Distribution Lines	3102.9100	12.5982	0.41
	Subtotal	34913.9930	395.6793	
Natural Gas	Pipelines	18422.3605	0.0000	0.00
	Facilities	746.9647	0.1909	0.03
	Distribution Lines	2068.6067	4.3160	0.21
	Subtotal	21237.9319	4.5069	
Oil Systems	Pipelines	0.0000	0.0000	0.00
	Facilities	4.0120	0.0162	0.40
	Subtotal	4.0120	0.0162	
Electrical Power	Facilities	137517.1974	3212.5241	2.34
	Subtotal	137517.1974	3212.5241	
Communication	Facilities	64.3100	2.3246	3.61
	Subtotal	64.3100	2.3246	
	Total	199,969.90	3,656.88	

Appendix A: County Listing for the Region

Alameda,CA
Amador,CA
Calaveras,CA
Colusa,CA
Contra Costa,CA
El Dorado,CA
Fresno,CA
Kern,CA
Kings,CA
Lake,CA
Madera,CA
Marin,CA
Mariposa,CA
Merced,CA
Monterey,CA
Napa,CA
Placer,CA
Sacramento,CA
San Benito,CA
San Francisco,CA
San Joaquin,CA
San Luis Obispo,CA
San Mateo,CA
Santa Barbara,CA
Santa Clara,CA
Santa Cruz,CA
Solano,CA
Sonoma,CA
Stanislaus,CA

Sutter, CA

Tulare, CA

Tuolumne, CA

Yolo, CA

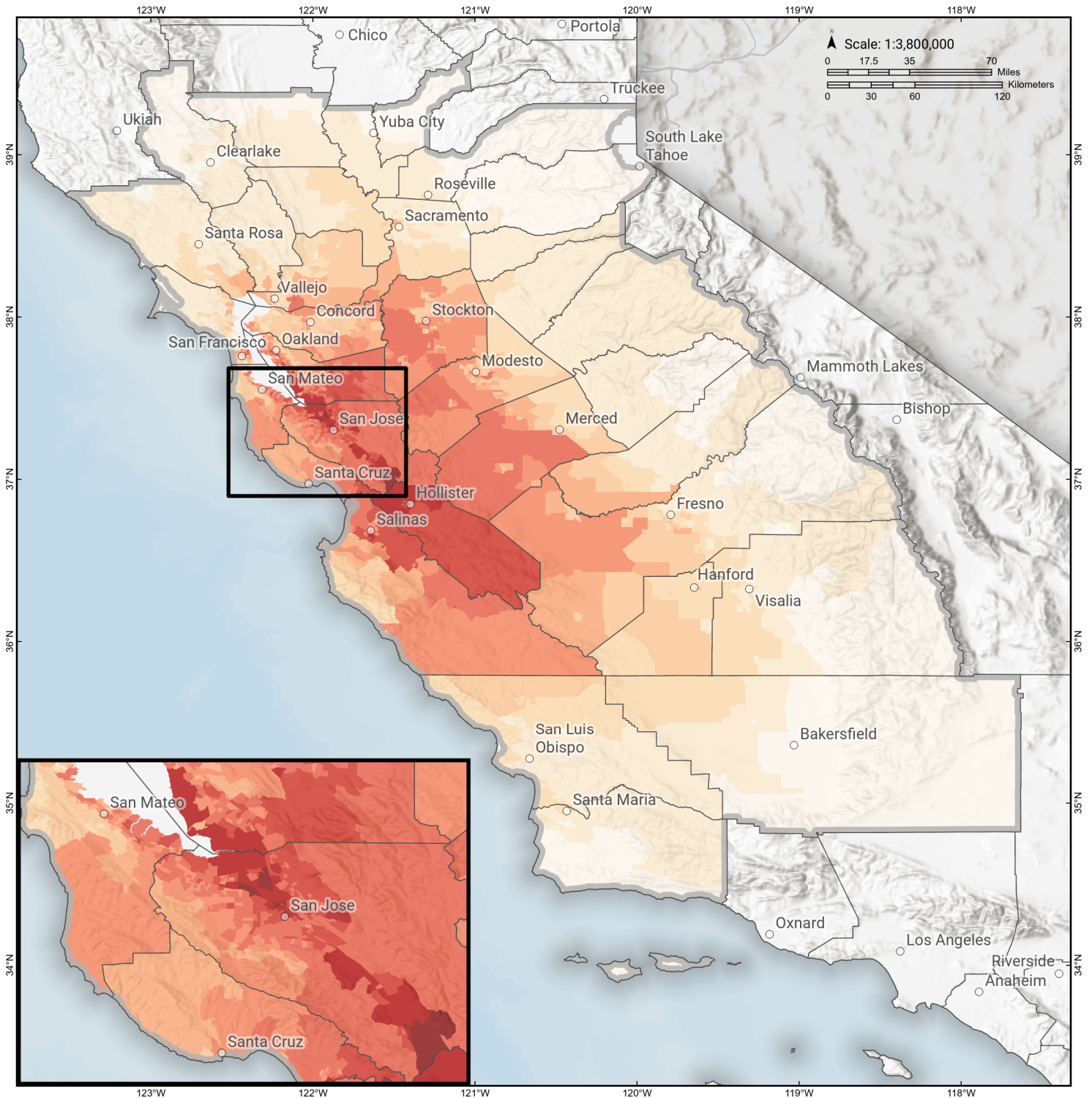
Yuba, CA

Appendix B: Regional Population and Building Value Data

State	County Name	Population	Building Value (millions of dollars)		
			Residential	Non-Residential	Total
California	Alameda	1,682,353	209,951	122,639	332,590
	Amador	40,474	5,608	2,517	8,125
	Calaveras	45,292	8,305	4,893	13,199
	Colusa	21,839	2,244	2,024	4,268
	Contra Costa	1,165,927	158,118	60,339	218,458
	El Dorado	191,185	34,907	9,704	44,611
	Fresno	1,008,654	98,532	61,772	160,304
	Kern	909,235	87,567	59,168	146,736
	Kings	152,486	13,719	7,861	21,581
	Lake	68,163	9,699	4,530	14,229
	Madera	156,255	18,025	9,641	27,667
	Marin	262,321	47,738	15,030	62,769
	Mariposa	17,131	3,299	1,141	4,441
	Merced	281,202	25,194	26,098	51,292
	Monterey	439,035	47,655	28,750	76,405
	Napa	138,019	20,517	13,045	33,563
	Placer	404,739	69,985	24,193	94,179
	Sacramento	1,585,055	179,811	83,911	263,723
	San Benito	64,209	9,440	3,799	13,239
	San Francisco	873,965	108,848	46,020	154,869
	San Joaquin	779,233	82,706	56,882	139,589
	San Luis Obispo	282,424	41,720	20,896	62,616
	San Mateo	764,442	110,372	44,995	155,368
	Santa Barbara	448,229	49,971	28,481	78,452
	Santa Clara	1,936,259	261,111	120,471	381,582
	Santa Cruz	270,861	36,147	18,805	54,952
	Solano	453,491	55,802	26,393	82,195
	Sonoma	488,863	68,827	35,781	104,609
	Stanislaus	552,878	62,937	37,511	100,449
	Sutter	99,633	10,618	6,448	17,066
	Tulare	473,117	43,262	31,210	74,472
	Tuolumne	55,620	8,964	3,507	12,471
	Yolo	216,403	24,130	18,343	42,473
Yuba	81,575	8,161	4,677	12,839	
Total Region		16,410,567	2,023,890	1,041,475	3,065,381

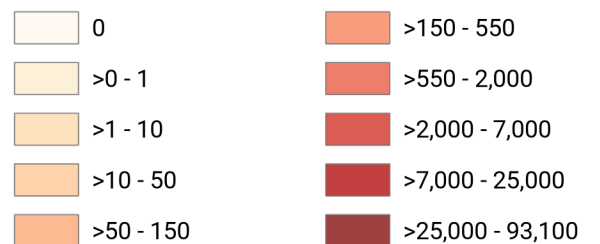
Calaveras: CC+CS+CE

Debris Generated by Census Tract



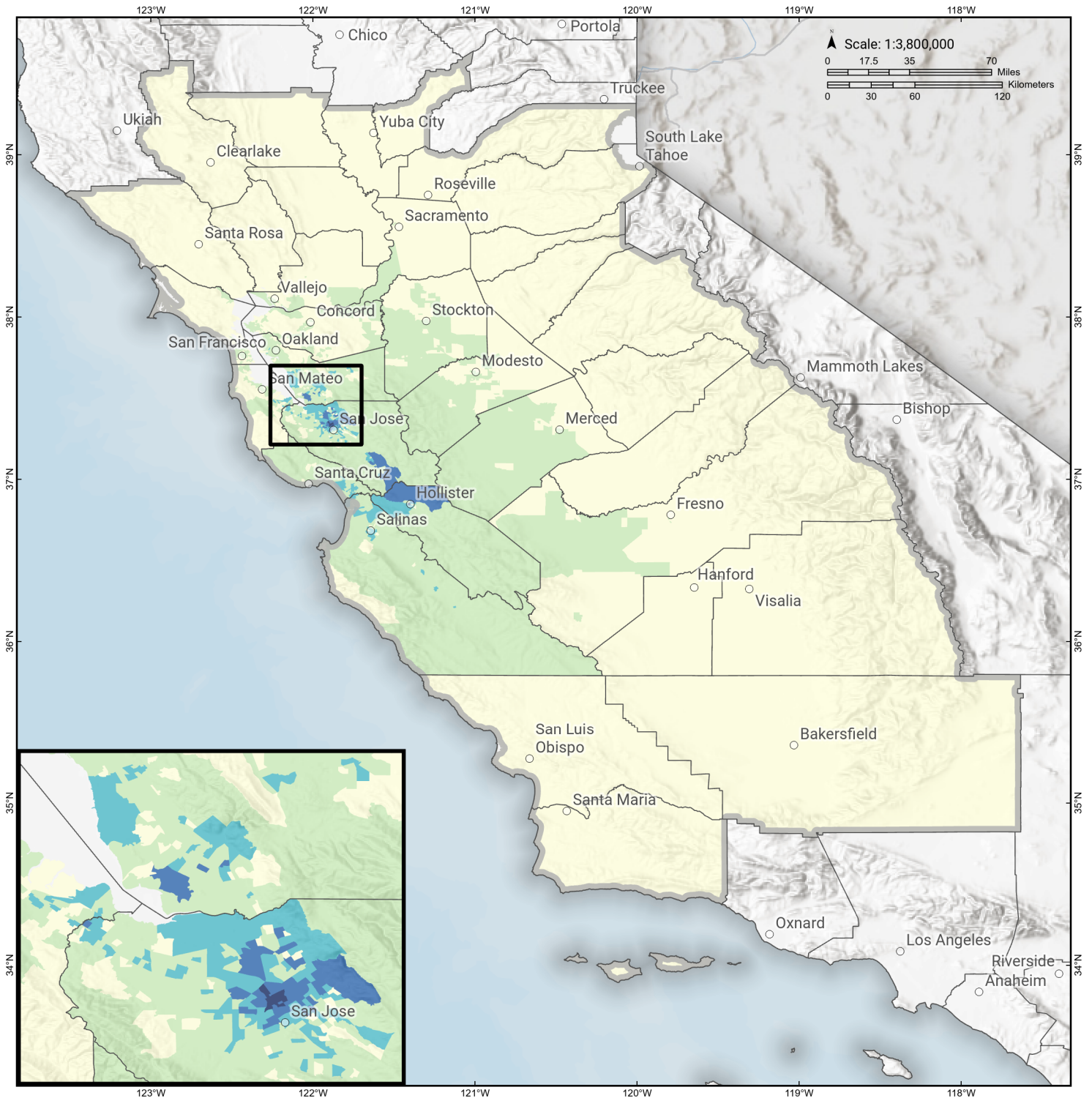
Study Region: Calaveras: CC+CS+CE
Scenario: calaverasccscshaw0_m7p26_se

Debris Generated (in tons)



Calaveras: CC+CS+CE

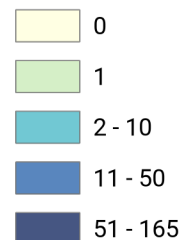
Displaced Households by Census Tract



Study Region: Calaveras: CC+CS+CE
Scenario: calaverascccsceshaw0_m7p26_se

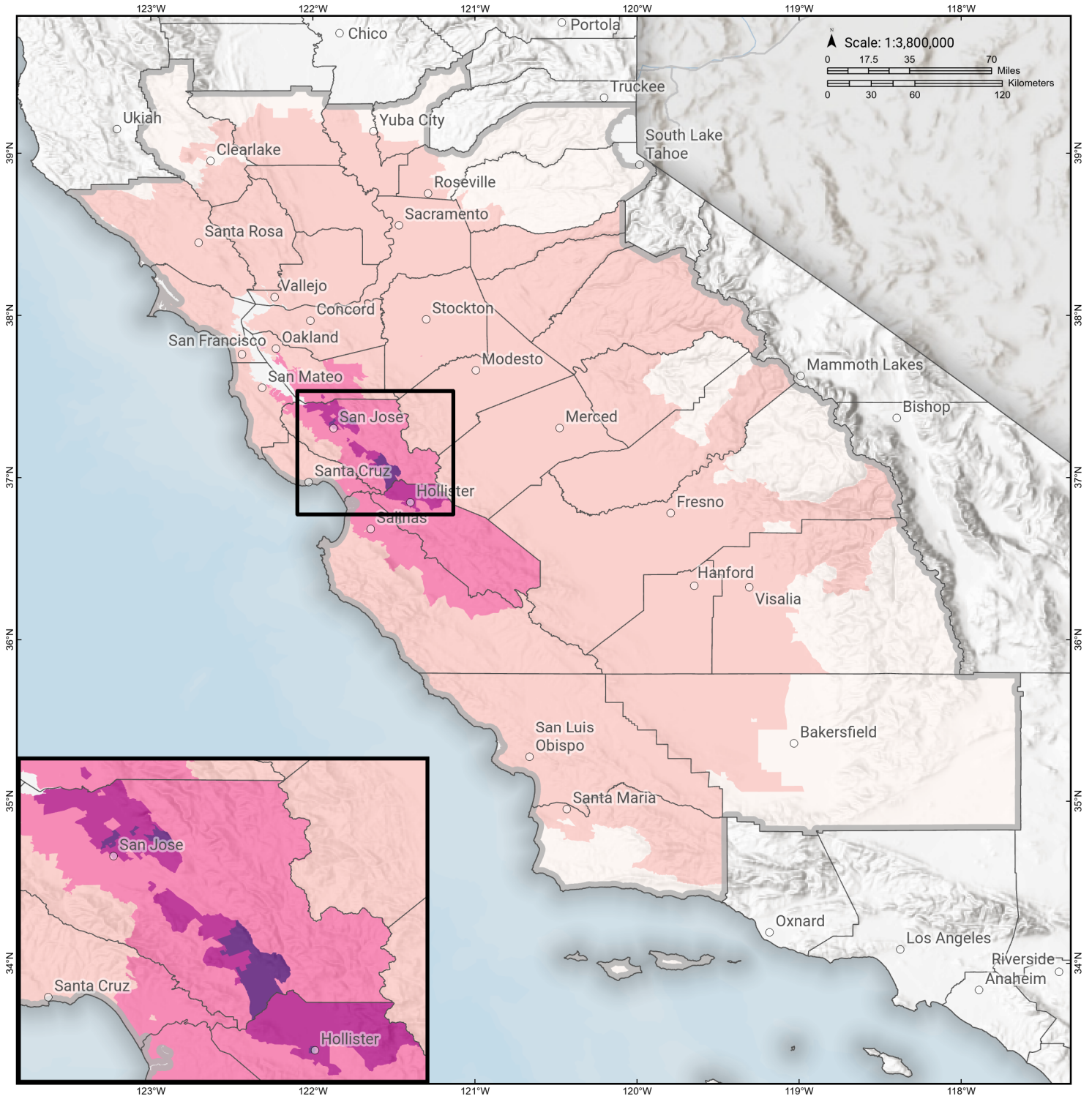


Displaced Households



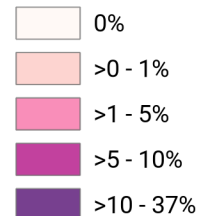
Calaveras: CC+CS+CE

Loss Ratio by Census Tract



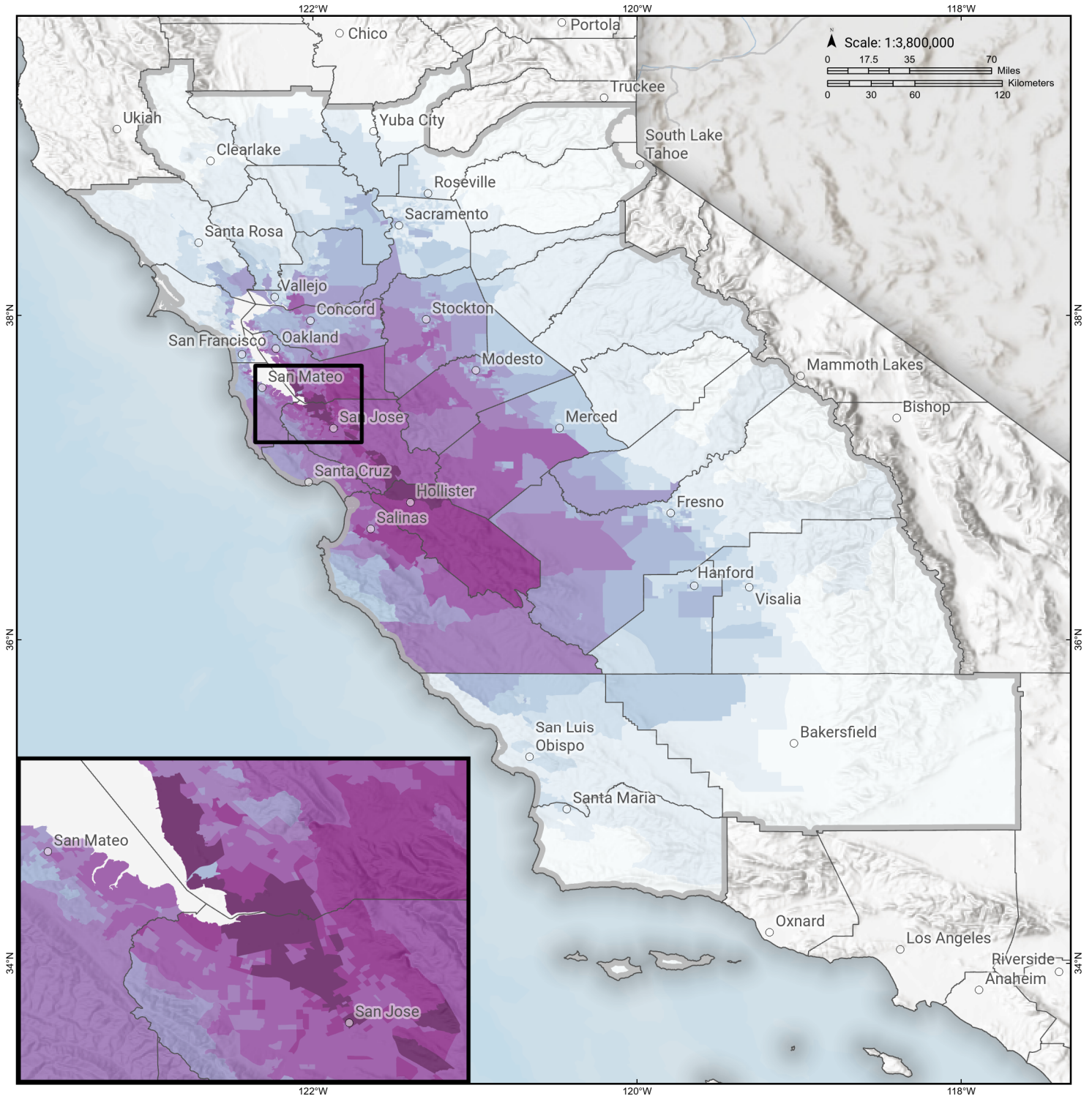
Study Region: Calaveras: CC+CS+CE
Scenario: calaverasccscshaw0_m7p26_se

Loss Ratio (ratio of building related economic loss to exposed value of buildings)



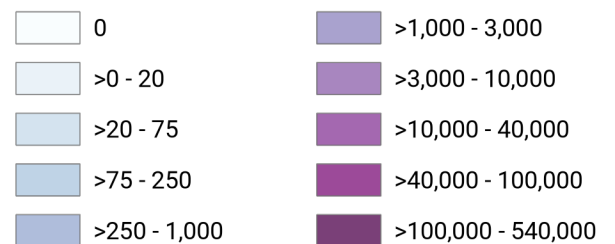
Calaveras: CC+CS+CE

Total Building Related Economic Loss by Census Tract



Study Region: Calaveras: CC+CS+CE
Scenario: calaverasccscshaw0_m7p26_se

Economic Loss (in thousands of USD \$)



Building Damage by Count by General Occupancy

November 08, 2024

	# of Buildings					Total
	None	Slight	Moderate	Extensive	Complete	
California						
Alameda						
<i>Government</i>	8,914	1,342	259	13	0	10,528
<i>Agriculture</i>	332	69	19	2	0	422
<i>Commercial</i>	26,356	4,559	984	85	5	31,989
<i>Religion</i>	1,682	239	59	6	0	1,986
<i>Single Family</i>	295,487	47,059	1,626	1	0	344,173
<i>Other Residential</i>	54,039	6,071	1,177	107	2	61,396
<i>Education</i>	1,020	82	13	2	0	1,117
<i>Industrial</i>	7,978	1,784	414	27	2	10,205
Amador						
<i>Industrial</i>	235	0	0	0	0	235
<i>Single Family</i>	14,962	0	0	0	0	14,962
<i>Other Residential</i>	1,037	0	0	0	0	1,037
<i>Education</i>	23	0	0	0	0	23
<i>Government</i>	32	0	0	0	0	32
<i>Agriculture</i>	44	0	0	0	0	44
<i>Religion</i>	45	0	0	0	0	45
<i>Commercial</i>	1,368	0	0	0	0	1,368
Calaveras						

	# of Buildings					Total
	None	Slight	Moderate	Extensive	Complete	
<i>Government</i>	84	0	0	0	0	84
<i>Other Residential</i>	2,559	0	0	0	0	2,559
<i>Education</i>	35	0	0	0	0	35
<i>Religion</i>	130	0	0	0	0	130
<i>Agriculture</i>	2,207	0	0	0	0	2,207
<i>Commercial</i>	1,413	0	0	0	0	1,413
<i>Industrial</i>	466	0	0	0	0	466
<i>Single Family</i>	22,148	0	0	0	0	22,148
Colusa						
<i>Agriculture</i>	142	0	0	0	0	142
<i>Religion</i>	58	0	0	0	0	58
<i>Commercial</i>	794	0	0	0	0	794
<i>Industrial</i>	113	0	0	0	0	113
<i>Other Residential</i>	954	0	0	0	0	954
<i>Single Family</i>	5,954	0	0	0	0	5,954
<i>Government</i>	32	0	0	0	0	32
<i>Education</i>	33	0	0	0	0	33
Contra Costa						
<i>Commercial</i>	17,457	490	43	1	0	17,991
<i>Agriculture</i>	712	31	6	0	0	749
<i>Religion</i>	1,188	34	3	0	0	1,226
<i>Single Family</i>	277,436	4,486	13	0	0	281,935
<i>Other Residential</i>	28,260	806	58	0	0	29,124
<i>Industrial</i>	4,574	158	17	0	0	4,749
<i>Government</i>	4,875	138	11	0	0	5,024

	# of Buildings					Total
	None	Slight	Moderate	Extensive	Complete	
<i>Education</i>	646	6	0	0	0	653
El Dorado						
<i>Other Residential</i>	10,420	0	0	0	0	10,420
<i>Industrial</i>	1,199	0	0	0	0	1,199
<i>Education</i>	128	0	0	0	0	128
<i>Single Family</i>	71,424	0	0	0	0	71,424
<i>Commercial</i>	4,768	0	0	0	0	4,768
<i>Government</i>	100	0	0	0	0	100
<i>Religion</i>	180	0	0	0	0	180
<i>Agriculture</i>	161	0	0	0	0	161
Fresno						
<i>Commercial</i>	20,985	64	5	0	0	21,054
<i>Religion</i>	1,500	6	1	0	0	1,507
<i>Agriculture</i>	3,392	27	2	0	0	3,421
<i>Industrial</i>	5,323	24	2	0	0	5,348
<i>Government</i>	289	1	0	0	0	291
<i>Other Residential</i>	40,787	174	13	0	0	40,973
<i>Single Family</i>	226,267	158	0	0	0	226,425
<i>Education</i>	602	0	0	0	0	602
Kern						
<i>Single Family</i>	205,139	0	0	0	0	205,139
<i>Other Residential</i>	54,518	2	0	0	0	54,520
<i>Industrial</i>	6,047	0	0	0	0	6,047
<i>Education</i>	462	0	0	0	0	462
<i>Government</i>	443	0	0	0	0	443

		# of Buildings					
		None	Slight	Moderate	Extensive	Complete	Total
Kings	<i>Religion</i>	1,524	0	0	0	0	1,524
	<i>Agriculture</i>	4,645	0	0	0	0	4,645
	<i>Commercial</i>	15,567	0	0	0	0	15,567
	<i>Commercial</i>	2,311	7	0	0	0	2,318
	<i>Religion</i>	209	1	0	0	0	210
	<i>Agriculture</i>	305	1	0	0	0	306
	<i>Government</i>	72	0	0	0	0	72
	<i>Industrial</i>	554	1	0	0	0	555
	<i>Single Family</i>	36,226	19	0	0	0	36,245
Lake	<i>Other Residential</i>	4,329	13	1	0	0	4,342
	<i>Education</i>	103	0	0	0	0	103
	<i>Agriculture</i>	161	0	0	0	0	161
	<i>Single Family</i>	21,633	0	0	0	0	21,633
	<i>Other Residential</i>	14,601	0	0	0	0	14,601
	<i>Education</i>	68	0	0	0	0	68
	<i>Industrial</i>	354	0	0	0	0	354
	<i>Commercial</i>	2,091	0	0	0	0	2,091
	<i>Religion</i>	140	0	0	0	0	140
Madera	<i>Government</i>	78	0	0	0	0	78
	<i>Commercial</i>	2,898	6	0	0	0	2,905
	<i>Religion</i>	119	0	0	0	0	119
	<i>Government</i>	111	0	0	0	0	111

	# of Buildings					Total
	None	Slight	Moderate	Extensive	Complete	
<i>Agriculture</i>	627	6	1	0	0	634
<i>Other Residential</i>	6,612	22	1	0	0	6,635
<i>Single Family</i>	38,887	25	0	0	0	38,912
<i>Education</i>	115	0	0	0	0	115
<i>Industrial</i>	900	3	0	0	0	903
Marin						
<i>Other Residential</i>	7,859	29	2	0	0	7,890
<i>Government</i>	143	0	0	0	0	143
<i>Education</i>	274	0	0	0	0	274
<i>Commercial</i>	8,231	37	2	0	0	8,270
<i>Religion</i>	318	1	0	0	0	319
<i>Agriculture</i>	189	1	0	0	0	190
<i>Single Family</i>	76,662	62	0	0	0	76,724
<i>Industrial</i>	1,518	16	1	0	0	1,535
Mariposa						
<i>Single Family</i>	8,084	0	0	0	0	8,084
<i>Other Residential</i>	307	0	0	0	0	307
<i>Education</i>	27	0	0	0	0	27
<i>Industrial</i>	94	0	0	0	0	94
<i>Commercial</i>	689	0	0	0	0	689
<i>Agriculture</i>	29	0	0	0	0	29
<i>Religion</i>	36	0	0	0	0	36
<i>Government</i>	33	0	0	0	0	33
Merced						
<i>Education</i>	162	1	0	0	0	163

	# of Buildings					Total
	None	Slight	Moderate	Extensive	Complete	
<i>Government</i>	168	2	0	0	0	171
<i>Commercial</i>	4,636	108	10	0	0	4,754
<i>Agriculture</i>	7,146	391	109	7	0	7,653
<i>Religion</i>	337	7	1	0	0	345
<i>Industrial</i>	998	22	2	0	0	1,022
<i>Single Family</i>	62,800	795	3	0	0	63,598
<i>Other Residential</i>	10,450	300	37	0	0	10,787
Monterey						
<i>Single Family</i>	80,613	10,052	212	0	0	90,876
<i>Industrial</i>	1,446	292	100	12	0	1,850
<i>Other Residential</i>	16,083	2,944	738	43	1	19,809
<i>Education</i>	226	12	1	0	0	239
<i>Government</i>	158	22	5	0	0	185
<i>Agriculture</i>	1,608	159	43	5	0	1,815
<i>Commercial</i>	7,708	1,154	345	39	1	9,246
<i>Religion</i>	487	68	22	3	0	580
Napa						
<i>Commercial</i>	4,013	8	0	0	0	4,021
<i>Agriculture</i>	348	0	0	0	0	349
<i>Religion</i>	148	0	0	0	0	148
<i>Single Family</i>	38,746	15	0	0	0	38,761
<i>Other Residential</i>	6,961	16	1	0	0	6,978
<i>Government</i>	103	0	0	0	0	103
<i>Education</i>	132	0	0	0	0	132

	# of Buildings					Total
	None	Slight	Moderate	Extensive	Complete	
Placer						
<i>Industrial</i>	1,363	4	0	0	0	1,367
<i>Education</i>	231	0	0	0	0	231
<i>Commercial</i>	8,537	1	0	0	0	8,538
<i>Government</i>	377	0	0	0	0	377
<i>Agriculture</i>	258	0	0	0	0	258
<i>Religion</i>	382	0	0	0	0	382
<i>Industrial</i>	2,703	0	0	0	0	2,703
<i>Other Residential</i>	14,842	1	0	0	0	14,843
<i>Single Family</i>	134,719	0	0	0	0	134,719
Sacramento						
<i>Single Family</i>	386,765	74	1	0	0	386,840
<i>Industrial</i>	6,749	7	1	0	0	6,756
<i>Other Residential</i>	56,328	78	7	0	0	56,413
<i>Education</i>	829	0	0	0	0	829
<i>Agriculture</i>	620	1	0	0	0	621
<i>Religion</i>	1,697	5	0	0	0	1,702
<i>Government</i>	612	7	0	0	0	619
<i>Commercial</i>	26,233	56	6	0	0	26,295
San Benito						
<i>Other Residential</i>	257	635	310	138	34	1,375
<i>Single Family</i>	4,057	8,950	1,700	19	0	14,726
<i>Industrial</i>	93	126	81	16	10	326
<i>Education</i>	17	16	7	1	2	42
<i>Government</i>	10	13	13	4	5	45

	# of Buildings					Total
	None	Slight	Moderate	Extensive	Complete	
<i>Commercial</i>	277	401	244	72	86	1,080
<i>Religion</i>	14	25	14	4	7	64
<i>Agriculture</i>	111	100	36	4	2	253
San Francisco						
<i>Single Family</i>	148,995	1,589	117	2	0	150,703
<i>Other Residential</i>	42,821	1,543	164	1	0	44,529
<i>Government</i>	261	24	4	0	0	289
<i>Education</i>	555	15	2	0	0	572
<i>Industrial</i>	3,655	178	26	0	0	3,860
<i>Commercial</i>	19,968	1,212	162	2	0	21,344
<i>Religion</i>	1,296	44	5	0	0	1,345
<i>Agriculture</i>	157	5	1	0	0	162
San Joaquin						
<i>Commercial</i>	12,460	365	38	1	0	12,864
<i>Agriculture</i>	729	22	2	0	0	753
<i>Religion</i>	849	25	3	0	0	877
<i>Government</i>	293	10	1	0	0	304
<i>Single Family</i>	182,914	5,559	437	11	0	188,922
<i>Other Residential</i>	20,945	774	85	1	0	21,805
<i>Education</i>	391	4	0	0	0	395
<i>Industrial</i>	4,752	158	18	0	0	4,928
San Luis Obispo						
<i>Religion</i>	360	0	0	0	0	360
<i>Agriculture</i>	421	0	0	0	0	421
<i>Government</i>	185	0	0	0	0	185

	# of Buildings					Total
	None	Slight	Moderate	Extensive	Complete	
<i>Commercial</i>	9,368	7	0	0	0	9,375
<i>Single Family</i>	85,631	8	0	0	0	85,639
<i>Industrial</i>	2,554	2	0	0	0	2,556
<i>Other Residential</i>	20,179	36	1	0	0	20,216
<i>Education</i>	182	0	0	0	0	182
San Mateo						
<i>Religion</i>	670	57	9	0	0	736
<i>Agriculture</i>	492	37	9	1	0	539
<i>Government</i>	270	25	4	0	0	299
<i>Commercial</i>	13,120	1,095	175	5	0	14,395
<i>Industrial</i>	3,984	404	80	4	0	4,472
<i>Other Residential</i>	20,598	1,619	224	11	0	22,453
<i>Single Family</i>	152,903	6,902	126	0	0	159,931
<i>Education</i>	474	13	2	0	0	489
Santa Barbara						
<i>Government</i>	239	0	0	0	0	239
<i>Other Residential</i>	24,108	3	0	0	0	24,111
<i>Education</i>	299	0	0	0	0	299
<i>Religion</i>	621	0	0	0	0	621
<i>Commercial</i>	9,820	0	0	0	0	9,820
<i>Agriculture</i>	464	0	0	0	0	464
<i>Single Family</i>	98,982	0	0	0	0	98,982
<i>Industrial</i>	2,840	0	0	0	0	2,840
Santa Clara						
<i>Other Residential</i>	30,509	19,451	6,491	2,447	263	59,160

	# of Buildings					Total
	None	Slight	Moderate	Extensive	Complete	
<i>Single Family</i>	255,285	155,827	15,940	150	17	427,219
<i>Government</i>	230	152	93	22	6	502
<i>Education</i>	880	228	56	8	2	1,173
<i>Industrial</i>	4,391	3,164	1,523	294	61	9,433
<i>Commercial</i>	18,808	11,070	4,565	845	182	35,469
<i>Religion</i>	806	466	218	41	9	1,540
<i>Agriculture</i>	359	296	183	47	10	895
Santa Cruz						
<i>Religion</i>	312	36	10	1	0	359
<i>Agriculture</i>	648	135	48	9	0	840
<i>Single Family</i>	63,988	4,816	66	0	0	68,870
<i>Other Residential</i>	12,837	1,737	298	20	0	14,892
<i>Industrial</i>	1,558	201	54	6	0	1,819
<i>Education</i>	212	11	2	0	0	225
<i>Commercial</i>	5,865	667	150	12	0	6,694
<i>Government</i>	110	12	4	1	0	127
Solano						
<i>Religion</i>	449	4	1	0	0	454
<i>Agriculture</i>	243	2	0	0	0	245
<i>Government</i>	151	1	0	0	0	152
<i>Commercial</i>	7,199	64	5	0	0	7,268
<i>Single Family</i>	120,676	291	0	0	0	120,968
<i>Industrial</i>	2,066	32	3	0	0	2,101
<i>Other Residential</i>	12,205	105	7	0	0	12,317
<i>Education</i>	225	0	0	0	0	225

	# of Buildings					Total
	None	Slight	Moderate	Extensive	Complete	
Sonoma						
<i>Other Residential</i>	25,019	14	0	0	0	25,033
<i>Government</i>	319	0	0	0	0	319
<i>Education</i>	367	0	0	0	0	367
<i>Religion</i>	576	0	0	0	0	576
<i>Commercial</i>	12,102	7	0	0	0	12,110
<i>Agriculture</i>	1,302	2	0	0	0	1,304
<i>Single Family</i>	142,021	7	0	0	0	142,028
<i>Industrial</i>	3,822	3	0	0	0	3,825
Stanislaus						
<i>Other Residential</i>	19,084	446	39	0	0	19,569
<i>Single Family</i>	141,072	1,650	2	0	0	142,724
<i>Education</i>	306	1	0	0	0	307
<i>Government</i>	664	15	1	0	0	680
<i>Industrial</i>	3,359	103	13	0	0	3,475
<i>Commercial</i>	10,083	258	28	0	0	10,369
<i>Religion</i>	443	12	1	0	0	456
<i>Agriculture</i>	1,195	38	6	0	0	1,239
Sutter						
<i>Other Residential</i>	3,113	0	0	0	0	3,113
<i>Industrial</i>	636	0	0	0	0	636
<i>Education</i>	62	0	0	0	0	62
<i>Government</i>	77	0	0	0	0	77
<i>Single Family</i>	24,512	0	0	0	0	24,512
<i>Commercial</i>	2,052	0	0	0	0	2,052

		# of Buildings					
		None	Slight	Moderate	Extensive	Complete	Total
Tulare	<i>Agriculture</i>	1,125	0	0	0	0	1,125
	<i>Religion</i>	154	0	0	0	0	154
	<i>Commercial</i>	8,871	2	0	0	0	8,873
	<i>Agriculture</i>	3,554	1	0	0	0	3,555
	<i>Religion</i>	827	0	0	0	0	827
	<i>Government</i>	461	0	0	0	0	461
	<i>Single Family</i>	112,034	0	0	0	0	112,034
	<i>Other Residential</i>	20,016	6	0	0	0	20,022
	<i>Industrial</i>	2,148	0	0	0	0	2,148
<i>Education</i>	269	0	0	0	0	269	
Tuolumne	<i>Education</i>	57	0	0	0	0	57
	<i>Government</i>	143	0	0	0	0	143
	<i>Commercial</i>	1,576	0	0	0	0	1,576
	<i>Religion</i>	121	0	0	0	0	121
	<i>Agriculture</i>	82	0	0	0	0	82
	<i>Industrial</i>	383	0	0	0	0	383
	<i>Other Residential</i>	4,962	0	0	0	0	4,962
	<i>Single Family</i>	21,645	0	0	0	0	21,645
Yolo	<i>Industrial</i>	1,115	2	0	0	0	1,117
	<i>Other Residential</i>	9,850	11	0	0	0	9,861
	<i>Education</i>	131	0	0	0	0	131
	<i>Government</i>	111	0	0	0	0	111

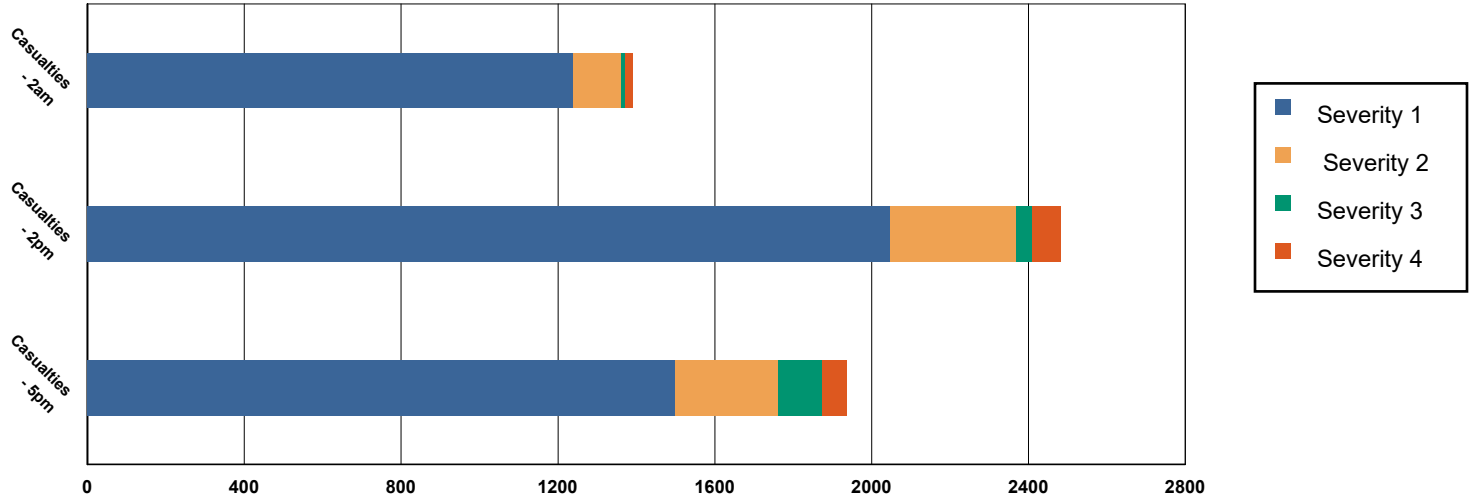
	# of Buildings					Total
	None	Slight	Moderate	Extensive	Complete	
<i>Single Family</i>	42,575	14	0	0	0	42,589
<i>Commercial</i>	4,219	6	0	0	0	4,225
<i>Agriculture</i>	281	0	0	0	0	281
<i>Religion</i>	242	0	0	0	0	242
Yuba						
<i>Government</i>	591	0	0	0	0	591
<i>Education</i>	54	0	0	0	0	54
<i>Other Residential</i>	7,021	0	0	0	0	7,021
<i>Religion</i>	98	0	0	0	0	98
<i>Commercial</i>	1,199	0	0	0	0	1,199
<i>Agriculture</i>	92	0	0	0	0	92
<i>Single Family</i>	18,867	0	0	0	0	18,867
<i>Industrial</i>	404	0	0	0	0	404
Total	4,680,517	318,033	40,287	4,558	709	5,044,103
Region Total	4,680,517	318,033	40,287	4,558	709	5,044,103

Totals only reflect data for those census tracts/blocks included in the user's study region and will reflect the entire county/state only if all of the census blocks for that county/states were selected at the time of study region creation.

Casualties Summary Report

November 08, 2024

Region Total Casualties



Injury Severity Level

Severity 1	Severity 2	Severity 3	Severity 4	Total
------------	------------	------------	------------	-------

California

Alameda

Casualties - 2am

	Severity 1	Severity 2	Severity 3	Severity 4	Total
Single Family	84	2	0	0	86
Hotels	0	0	0	0	0
Commuting	0	0	0	0	0
Educational	0	0	0	0	0
Industrial	3	0	0	0	4
Commercial	2	0	0	0	2
Other-Residential	51	3	0	0	54
Total Casualties - 2am	141	5	0	0	146

Casualties - 2pm

Industrial	25	2	0	0	28
Educational	30	2	0	0	33
Other-Residential	15	1	0	0	16
Single Family	22	0	0	0	22
Hotels	0	0	0	0	0
Commuting	0	0	0	0	1
Commercial	150	12	0	1	162

	Injury Severity Level				Total
	Severity 1	Severity 2	Severity 3	Severity 4	
California					
Alameda					
Total Casualties - 2pm	241	17	1	1	261
Casualties - 5pm					
<i>Commuting</i>	2	3	5	1	11
<i>Single Family</i>	30	1	0	0	31
<i>Commercial</i>	108	8	0	1	117
<i>Hotels</i>	0	0	0	0	0
<i>Educational</i>	5	0	0	0	5
<i>Industrial</i>	16	1	0	0	17
<i>Other-Residential</i>	19	1	0	0	20
Total Casualties - 5pm	179	15	6	2	202
Amador					
Casualties - 2am					
<i>Commercial</i>	0	0	0	0	0
<i>Other-Residential</i>	0	0	0	0	0
<i>Commuting</i>	0	0	0	0	0
<i>Educational</i>	0	0	0	0	0
<i>Single Family</i>	0	0	0	0	0
<i>Hotels</i>	0	0	0	0	0
<i>Industrial</i>	0	0	0	0	0
Total Casualties - 2am	0	0	0	0	0
Casualties - 2pm					
<i>Single Family</i>	0	0	0	0	0
<i>Hotels</i>	0	0	0	0	0
<i>Educational</i>	0	0	0	0	0
<i>Commuting</i>	0	0	0	0	0
<i>Commercial</i>	0	0	0	0	0
<i>Other-Residential</i>	0	0	0	0	0
<i>Industrial</i>	0	0	0	0	0
Total Casualties - 2pm	0	0	0	0	0
Casualties - 5pm					
<i>Commercial</i>	0	0	0	0	0
<i>Commuting</i>	0	0	0	0	0
<i>Other-Residential</i>	0	0	0	0	0
<i>Single Family</i>	0	0	0	0	0
<i>Educational</i>	0	0	0	0	0
<i>Hotels</i>	0	0	0	0	0
<i>Industrial</i>	0	0	0	0	0
Total Casualties - 5pm	0	0	0	0	0
Calaveras					
Casualties - 2am					
<i>Other-Residential</i>	0	0	0	0	0

	Injury Severity Level				Total
	Severity 1	Severity 2	Severity 3	Severity 4	
California					
Calaveras					
Casualties - 2am					
Commuting	0	0	0	0	0
Commercial	0	0	0	0	0
Single Family	0	0	0	0	0
Hotels	0	0	0	0	0
Educational	0	0	0	0	0
Industrial	0	0	0	0	0
Total Casualties - 2am	0	0	0	0	0
Casualties - 2pm					
Hotels	0	0	0	0	0
Single Family	0	0	0	0	0
Educational	0	0	0	0	0
Commuting	0	0	0	0	0
Commercial	0	0	0	0	0
Industrial	0	0	0	0	0
Other-Residential	0	0	0	0	0
Total Casualties - 2pm	0	0	0	0	0
Casualties - 5pm					
Industrial	0	0	0	0	0
Commercial	0	0	0	0	0
Other-Residential	0	0	0	0	0
Educational	0	0	0	0	0
Hotels	0	0	0	0	0
Commuting	0	0	0	0	0
Single Family	0	0	0	0	0
Total Casualties - 5pm	0	0	0	0	0
Colusa					
Casualties - 2am					
Other-Residential	0	0	0	0	0
Industrial	0	0	0	0	0
Single Family	0	0	0	0	0
Commercial	0	0	0	0	0
Educational	0	0	0	0	0
Commuting	0	0	0	0	0
Hotels	0	0	0	0	0
Total Casualties - 2am	0	0	0	0	0
Casualties - 2pm					
Hotels	0	0	0	0	0
Single Family	0	0	0	0	0
Educational	0	0	0	0	0
Commercial	0	0	0	0	0
Commuting	0	0	0	0	0

	Injury Severity Level				Total
	Severity 1	Severity 2	Severity 3	Severity 4	
California					
Colusa					
Casualties - 2pm					
Other-Residential	0	0	0	0	0
Industrial	0	0	0	0	0
Total Casualties - 2pm	0	0	0	0	0
Casualties - 5pm					
Industrial	0	0	0	0	0
Commercial	0	0	0	0	0
Other-Residential	0	0	0	0	0
Commuting	0	0	0	0	0
Single Family	0	0	0	0	0
Educational	0	0	0	0	0
Hotels	0	0	0	0	0
Total Casualties - 5pm	0	0	0	0	0
Contra Costa					
Casualties - 2am					
Educational	0	0	0	0	0
Hotels	0	0	0	0	0
Industrial	0	0	0	0	0
Other-Residential	3	0	0	0	3
Single Family	7	0	0	0	7
Commercial	0	0	0	0	0
Commuting	0	0	0	0	0
Total Casualties - 2am	11	0	0	0	11
Casualties - 2pm					
Other-Residential	1	0	0	0	1
Industrial	1	0	0	0	1
Hotels	0	0	0	0	0
Single Family	2	0	0	0	2
Educational	1	0	0	0	2
Commuting	0	0	0	0	0
Commercial	10	0	0	0	10
Total Casualties - 2pm	15	0	0	0	16
Casualties - 5pm					
Educational	0	0	0	0	0
Commuting	0	0	0	0	0
Single Family	3	0	0	0	3
Hotels	0	0	0	0	0
Industrial	1	0	0	0	1
Other-Residential	1	0	0	0	1
Commercial	7	0	0	0	7
Total Casualties - 5pm	11	0	0	0	12

	Injury Severity Level				Total
	Severity 1	Severity 2	Severity 3	Severity 4	
California					
El Dorado					
Casualties - 2am					
<i>Commuting</i>	0	0	0	0	0
<i>Educational</i>	0	0	0	0	0
<i>Single Family</i>	0	0	0	0	0
<i>Hotels</i>	0	0	0	0	0
<i>Other-Residential</i>	0	0	0	0	0
<i>Industrial</i>	0	0	0	0	0
<i>Commercial</i>	0	0	0	0	0
Total Casualties - 2am	0	0	0	0	0
Casualties - 2pm					
<i>Industrial</i>	0	0	0	0	0
<i>Other-Residential</i>	0	0	0	0	0
<i>Single Family</i>	0	0	0	0	0
<i>Hotels</i>	0	0	0	0	0
<i>Educational</i>	0	0	0	0	0
<i>Commuting</i>	0	0	0	0	0
<i>Commercial</i>	0	0	0	0	0
Total Casualties - 2pm	0	0	0	0	0
Casualties - 5pm					
<i>Commercial</i>	0	0	0	0	0
<i>Commuting</i>	0	0	0	0	0
<i>Single Family</i>	0	0	0	0	0
<i>Educational</i>	0	0	0	0	0
<i>Hotels</i>	0	0	0	0	0
<i>Industrial</i>	0	0	0	0	0
<i>Other-Residential</i>	0	0	0	0	0
Total Casualties - 5pm	0	0	0	0	0
Fresno					
Casualties - 2am					
<i>Hotels</i>	0	0	0	0	0
<i>Educational</i>	0	0	0	0	0
<i>Industrial</i>	0	0	0	0	0
<i>Commercial</i>	0	0	0	0	0
<i>Other-Residential</i>	1	0	0	0	1
<i>Single Family</i>	0	0	0	0	0
<i>Commuting</i>	0	0	0	0	0
Total Casualties - 2am	1	0	0	0	1
Casualties - 2pm					
<i>Commercial</i>	1	0	0	0	1
<i>Other-Residential</i>	0	0	0	0	0
<i>Industrial</i>	0	0	0	0	0
<i>Single Family</i>	0	0	0	0	0

	Injury Severity Level				Total
	Severity 1	Severity 2	Severity 3	Severity 4	
California					
Fresno					
Casualties - 2pm					
<i>Hotels</i>	0	0	0	0	0
<i>Commuting</i>	0	0	0	0	0
<i>Educational</i>	0	0	0	0	0
Total Casualties - 2pm	1	0	0	0	2
Casualties - 5pm					
<i>Educational</i>	0	0	0	0	0
<i>Commuting</i>	0	0	0	0	0
<i>Hotels</i>	0	0	0	0	0
<i>Industrial</i>	0	0	0	0	0
<i>Single Family</i>	0	0	0	0	0
<i>Other-Residential</i>	0	0	0	0	0
<i>Commercial</i>	1	0	0	0	1
Total Casualties - 5pm	1	0	0	0	1
Kern					
Casualties - 2am					
<i>Commercial</i>	0	0	0	0	0
<i>Commuting</i>	0	0	0	0	0
<i>Educational</i>	0	0	0	0	0
<i>Single Family</i>	0	0	0	0	0
<i>Other-Residential</i>	0	0	0	0	0
<i>Hotels</i>	0	0	0	0	0
<i>Industrial</i>	0	0	0	0	0
Total Casualties - 2am	0	0	0	0	0
Casualties - 2pm					
<i>Educational</i>	0	0	0	0	0
<i>Commuting</i>	0	0	0	0	0
<i>Single Family</i>	0	0	0	0	0
<i>Hotels</i>	0	0	0	0	0
<i>Other-Residential</i>	0	0	0	0	0
<i>Commercial</i>	0	0	0	0	0
<i>Industrial</i>	0	0	0	0	0
Total Casualties - 2pm	0	0	0	0	0
Casualties - 5pm					
<i>Single Family</i>	0	0	0	0	0
<i>Commercial</i>	0	0	0	0	0
<i>Other-Residential</i>	0	0	0	0	0
<i>Commuting</i>	0	0	0	0	0
<i>Educational</i>	0	0	0	0	0
<i>Hotels</i>	0	0	0	0	0
<i>Industrial</i>	0	0	0	0	0

	Injury Severity Level				Total
	Severity 1	Severity 2	Severity 3	Severity 4	
California					
Kern					
Total Casualties - 5pm	0	0	0	0	0
Kings					
Casualties - 2am					
<i>Industrial</i>	0	0	0	0	0
<i>Other-Residential</i>	0	0	0	0	0
<i>Educational</i>	0	0	0	0	0
<i>Commuting</i>	0	0	0	0	0
<i>Commercial</i>	0	0	0	0	0
<i>Single Family</i>	0	0	0	0	0
<i>Hotels</i>	0	0	0	0	0
Total Casualties - 2am	0	0	0	0	0
Casualties - 2pm					
<i>Single Family</i>	0	0	0	0	0
<i>Other-Residential</i>	0	0	0	0	0
<i>Commercial</i>	0	0	0	0	0
<i>Educational</i>	0	0	0	0	0
<i>Commuting</i>	0	0	0	0	0
<i>Hotels</i>	0	0	0	0	0
<i>Industrial</i>	0	0	0	0	0
Total Casualties - 2pm	0	0	0	0	0
Casualties - 5pm					
<i>Single Family</i>	0	0	0	0	0
<i>Commercial</i>	0	0	0	0	0
<i>Commuting</i>	0	0	0	0	0
<i>Other-Residential</i>	0	0	0	0	0
<i>Educational</i>	0	0	0	0	0
<i>Hotels</i>	0	0	0	0	0
<i>Industrial</i>	0	0	0	0	0
Total Casualties - 5pm	0	0	0	0	0
Lake					
Casualties - 2am					
<i>Hotels</i>	0	0	0	0	0
<i>Industrial</i>	0	0	0	0	0
<i>Other-Residential</i>	0	0	0	0	0
<i>Commuting</i>	0	0	0	0	0
<i>Educational</i>	0	0	0	0	0
<i>Single Family</i>	0	0	0	0	0
<i>Commercial</i>	0	0	0	0	0
Total Casualties - 2am	0	0	0	0	0
Casualties - 2pm					
<i>Industrial</i>	0	0	0	0	0

	Injury Severity Level				Total
	Severity 1	Severity 2	Severity 3	Severity 4	
California					
Lake					
Casualties - 2pm					
Single Family	0	0	0	0	0
Commercial	0	0	0	0	0
Other-Residential	0	0	0	0	0
Hotels	0	0	0	0	0
Educational	0	0	0	0	0
Commuting	0	0	0	0	0
Total Casualties - 2pm	0	0	0	0	0
Casualties - 5pm					
Other-Residential	0	0	0	0	0
Industrial	0	0	0	0	0
Commercial	0	0	0	0	0
Educational	0	0	0	0	0
Commuting	0	0	0	0	0
Single Family	0	0	0	0	0
Hotels	0	0	0	0	0
Total Casualties - 5pm	0	0	0	0	0
Madera					
Casualties - 2am					
Hotels	0	0	0	0	0
Educational	0	0	0	0	0
Single Family	0	0	0	0	0
Commuting	0	0	0	0	0
Industrial	0	0	0	0	0
Commercial	0	0	0	0	0
Other-Residential	0	0	0	0	0
Total Casualties - 2am	0	0	0	0	0
Casualties - 2pm					
Industrial	0	0	0	0	0
Commercial	0	0	0	0	0
Other-Residential	0	0	0	0	0
Commuting	0	0	0	0	0
Single Family	0	0	0	0	0
Hotels	0	0	0	0	0
Educational	0	0	0	0	0
Total Casualties - 2pm	0	0	0	0	0
Casualties - 5pm					
Industrial	0	0	0	0	0
Commercial	0	0	0	0	0
Single Family	0	0	0	0	0
Educational	0	0	0	0	0
Other-Residential	0	0	0	0	0

	Injury Severity Level				Total
	Severity 1	Severity 2	Severity 3	Severity 4	
California					
Madera					
Casualties - 5pm					
<i>Commuting</i>	0	0	0	0	0
<i>Hotels</i>	0	0	0	0	0
Total Casualties - 5pm	0	0	0	0	0
Marin					
Casualties - 2am					
<i>Commercial</i>	0	0	0	0	0
<i>Commuting</i>	0	0	0	0	0
<i>Other-Residential</i>	0	0	0	0	0
<i>Educational</i>	0	0	0	0	0
<i>Single Family</i>	0	0	0	0	0
<i>Hotels</i>	0	0	0	0	0
<i>Industrial</i>	0	0	0	0	0
Total Casualties - 2am	0	0	0	0	0
Casualties - 2pm					
<i>Hotels</i>	0	0	0	0	0
<i>Commuting</i>	0	0	0	0	0
<i>Educational</i>	0	0	0	0	0
<i>Industrial</i>	0	0	0	0	0
<i>Other-Residential</i>	0	0	0	0	0
<i>Commercial</i>	0	0	0	0	0
<i>Single Family</i>	0	0	0	0	0
Total Casualties - 2pm	0	0	0	0	0
Casualties - 5pm					
<i>Commuting</i>	0	0	0	0	0
<i>Commercial</i>	0	0	0	0	0
<i>Other-Residential</i>	0	0	0	0	0
<i>Single Family</i>	0	0	0	0	0
<i>Industrial</i>	0	0	0	0	0
<i>Educational</i>	0	0	0	0	0
<i>Hotels</i>	0	0	0	0	0
Total Casualties - 5pm	0	0	0	0	0
Mariposa					
Casualties - 2am					
<i>Commuting</i>	0	0	0	0	0
<i>Single Family</i>	0	0	0	0	0
<i>Commercial</i>	0	0	0	0	0
<i>Hotels</i>	0	0	0	0	0
<i>Educational</i>	0	0	0	0	0
<i>Industrial</i>	0	0	0	0	0
<i>Other-Residential</i>	0	0	0	0	0

	Injury Severity Level				Total
	Severity 1	Severity 2	Severity 3	Severity 4	
California					
Mariposa					
Total Casualties - 2am	0	0	0	0	0
Casualties - 2pm					
<i>Hotels</i>	0	0	0	0	0
<i>Industrial</i>	0	0	0	0	0
<i>Commercial</i>	0	0	0	0	0
<i>Other-Residential</i>	0	0	0	0	0
<i>Educational</i>	0	0	0	0	0
<i>Commuting</i>	0	0	0	0	0
<i>Single Family</i>	0	0	0	0	0
Total Casualties - 2pm	0	0	0	0	0
Casualties - 5pm					
<i>Other-Residential</i>	0	0	0	0	0
<i>Educational</i>	0	0	0	0	0
<i>Commuting</i>	0	0	0	0	0
<i>Hotels</i>	0	0	0	0	0
<i>Single Family</i>	0	0	0	0	0
<i>Commercial</i>	0	0	0	0	0
<i>Industrial</i>	0	0	0	0	0
Total Casualties - 5pm	0	0	0	0	0
Merced					
Casualties - 2am					
<i>Hotels</i>	0	0	0	0	0
<i>Industrial</i>	0	0	0	0	0
<i>Commercial</i>	0	0	0	0	0
<i>Single Family</i>	1	0	0	0	1
<i>Other-Residential</i>	1	0	0	0	1
<i>Educational</i>	0	0	0	0	0
<i>Commuting</i>	0	0	0	0	0
Total Casualties - 2am	2	0	0	0	2
Casualties - 2pm					
<i>Other-Residential</i>	0	0	0	0	0
<i>Industrial</i>	0	0	0	0	0
<i>Commercial</i>	7	0	0	0	7
<i>Commuting</i>	0	0	0	0	0
<i>Hotels</i>	0	0	0	0	0
<i>Educational</i>	0	0	0	0	0
<i>Single Family</i>	0	0	0	0	0
Total Casualties - 2pm	8	0	0	0	8
Casualties - 5pm					
<i>Industrial</i>	0	0	0	0	0
<i>Hotels</i>	0	0	0	0	0

	Injury Severity Level				Total
	Severity 1	Severity 2	Severity 3	Severity 4	
California					
Merced					
Casualties - 5pm					
<i>Educational</i>	0	0	0	0	0
<i>Commuting</i>	0	0	0	0	0
<i>Single Family</i>	0	0	0	0	0
<i>Commercial</i>	5	0	0	0	5
<i>Other-Residential</i>	0	0	0	0	0
Total Casualties - 5pm	6	0	0	0	6
Monterey					
Casualties - 2am					
<i>Other-Residential</i>	22	2	0	0	23
<i>Commuting</i>	0	0	0	0	0
<i>Commercial</i>	0	0	0	0	0
<i>Single Family</i>	20	0	0	0	20
<i>Hotels</i>	0	0	0	0	0
<i>Educational</i>	0	0	0	0	0
<i>Industrial</i>	0	0	0	0	0
Total Casualties - 2am	43	2	0	0	45
Casualties - 2pm					
<i>Commuting</i>	0	0	0	0	0
<i>Commercial</i>	27	2	0	0	29
<i>Single Family</i>	5	0	0	0	5
<i>Hotels</i>	0	0	0	0	0
<i>Educational</i>	7	0	0	0	8
<i>Industrial</i>	3	0	0	0	3
<i>Other-Residential</i>	6	0	0	0	7
Total Casualties - 2pm	49	4	0	0	53
Casualties - 5pm					
<i>Commercial</i>	20	2	0	0	22
<i>Other-Residential</i>	8	1	0	0	9
<i>Industrial</i>	2	0	0	0	2
<i>Hotels</i>	0	0	0	0	0
<i>Educational</i>	1	0	0	0	1
<i>Commuting</i>	1	1	2	0	4
<i>Single Family</i>	7	0	0	0	7
Total Casualties - 5pm	39	4	2	0	45
Napa					
Casualties - 2am					
<i>Commercial</i>	0	0	0	0	0
<i>Other-Residential</i>	0	0	0	0	0
<i>Educational</i>	0	0	0	0	0
<i>Single Family</i>	0	0	0	0	0
<i>Commuting</i>	0	0	0	0	0

	Injury Severity Level				Total
	Severity 1	Severity 2	Severity 3	Severity 4	
California					
Napa					
Casualties - 2am					
<i>Hotels</i>	0	0	0	0	0
<i>Industrial</i>	0	0	0	0	0
Total Casualties - 2am	0	0	0	0	0
Casualties - 2pm					
<i>Educational</i>	0	0	0	0	0
<i>Hotels</i>	0	0	0	0	0
<i>Commuting</i>	0	0	0	0	0
<i>Industrial</i>	0	0	0	0	0
<i>Other-Residential</i>	0	0	0	0	0
<i>Single Family</i>	0	0	0	0	0
<i>Commercial</i>	0	0	0	0	0
Total Casualties - 2pm	0	0	0	0	0
Casualties - 5pm					
<i>Commercial</i>	0	0	0	0	0
<i>Single Family</i>	0	0	0	0	0
<i>Other-Residential</i>	0	0	0	0	0
<i>Commuting</i>	0	0	0	0	0
<i>Industrial</i>	0	0	0	0	0
<i>Educational</i>	0	0	0	0	0
<i>Hotels</i>	0	0	0	0	0
Total Casualties - 5pm	0	0	0	0	0
Placer					
Casualties - 2am					
<i>Hotels</i>	0	0	0	0	0
<i>Educational</i>	0	0	0	0	0
<i>Industrial</i>	0	0	0	0	0
<i>Other-Residential</i>	0	0	0	0	0
<i>Commercial</i>	0	0	0	0	0
<i>Single Family</i>	0	0	0	0	0
<i>Commuting</i>	0	0	0	0	0
Total Casualties - 2am	0	0	0	0	0
Casualties - 2pm					
<i>Other-Residential</i>	0	0	0	0	0
<i>Industrial</i>	0	0	0	0	0
<i>Commercial</i>	0	0	0	0	0
<i>Single Family</i>	0	0	0	0	0
<i>Educational</i>	0	0	0	0	0
<i>Commuting</i>	0	0	0	0	0
<i>Hotels</i>	0	0	0	0	0
Total Casualties - 2pm	0	0	0	0	0

	Injury Severity Level				Total
	Severity 1	Severity 2	Severity 3	Severity 4	
California					
Placer					
Casualties - 5pm					
Single Family	0	0	0	0	0
Hotels	0	0	0	0	0
Commuting	0	0	0	0	0
Educational	0	0	0	0	0
Commercial	0	0	0	0	0
Industrial	0	0	0	0	0
Other-Residential	0	0	0	0	0
Total Casualties - 5pm	0	0	0	0	0
Sacramento					
Casualties - 2am					
Industrial	0	0	0	0	0
Other-Residential	0	0	0	0	0
Commercial	0	0	0	0	0
Single Family	0	0	0	0	0
Hotels	0	0	0	0	0
Commuting	0	0	0	0	0
Educational	0	0	0	0	0
Total Casualties - 2am	0	0	0	0	0
Casualties - 2pm					
Other-Residential	0	0	0	0	0
Commuting	0	0	0	0	0
Single Family	0	0	0	0	0
Commercial	3	0	0	0	3
Hotels	0	0	0	0	0
Educational	0	0	0	0	0
Industrial	0	0	0	0	0
Total Casualties - 2pm	3	0	0	0	3
Casualties - 5pm					
Industrial	0	0	0	0	0
Educational	0	0	0	0	0
Hotels	0	0	0	0	0
Commercial	1	0	0	0	1
Commuting	0	0	0	0	0
Other-Residential	0	0	0	0	0
Single Family	0	0	0	0	0
Total Casualties - 5pm	2	0	0	0	2
San Benito					
Casualties - 2am					
Other-Residential	17	3	0	1	21
Commercial	1	0	0	0	2
Commuting	0	0	0	0	0

	Injury Severity Level				Total
	Severity 1	Severity 2	Severity 3	Severity 4	
California					
San Benito					
Casualties - 2am					
<i>Hotels</i>	0	0	0	0	0
<i>Educational</i>	0	0	0	0	0
<i>Single Family</i>	32	2	0	0	34
<i>Industrial</i>	1	0	0	0	1
Total Casualties - 2am	51	6	0	1	58
Casualties - 2pm					
<i>Hotels</i>	0	0	0	0	0
<i>Educational</i>	92	28	5	9	134
<i>Industrial</i>	8	2	0	0	11
<i>Other-Residential</i>	5	1	0	0	6
<i>Commercial</i>	96	27	4	8	135
<i>Commuting</i>	0	0	0	0	1
<i>Single Family</i>	9	1	0	0	10
Total Casualties - 2pm	210	58	9	18	296
Casualties - 5pm					
<i>Commuting</i>	2	3	5	1	11
<i>Commercial</i>	73	20	3	6	102
<i>Other-Residential</i>	6	1	0	0	8
<i>Single Family</i>	12	1	0	0	12
<i>Industrial</i>	5	1	0	0	7
<i>Educational</i>	13	4	1	1	19
<i>Hotels</i>	0	0	0	0	0
Total Casualties - 5pm	111	30	9	9	159
San Francisco					
Casualties - 2am					
<i>Industrial</i>	0	0	0	0	0
<i>Hotels</i>	0	0	0	0	0
<i>Commercial</i>	1	0	0	0	1
<i>Other-Residential</i>	18	1	0	0	19
<i>Commuting</i>	0	0	0	0	0
<i>Educational</i>	0	0	0	0	0
<i>Single Family</i>	3	0	0	0	3
Total Casualties - 2am	22	1	0	0	23
Casualties - 2pm					
<i>Commercial</i>	30	2	0	0	31
<i>Industrial</i>	2	0	0	0	2
<i>Other-Residential</i>	6	0	0	0	6
<i>Single Family</i>	1	0	0	0	1
<i>Hotels</i>	0	0	0	0	0
<i>Commuting</i>	0	0	0	0	0
<i>Educational</i>	4	0	0	0	4

	Injury Severity Level				Total
	Severity 1	Severity 2	Severity 3	Severity 4	
California					
San Francisco					
Total Casualties - 2pm	41	2	0	0	44
Casualties - 5pm					
<i>Educational</i>	1	0	0	0	1
<i>Hotels</i>	0	0	0	0	0
<i>Industrial</i>	1	0	0	0	1
<i>Commuting</i>	0	0	0	0	0
<i>Commercial</i>	17	1	0	0	18
<i>Other-Residential</i>	7	0	0	0	7
<i>Single Family</i>	1	0	0	0	1
Total Casualties - 5pm	27	1	0	0	29
San Joaquin					
Casualties - 2am					
<i>Educational</i>	0	0	0	0	0
<i>Commuting</i>	0	0	0	0	0
<i>Hotels</i>	0	0	0	0	0
<i>Commercial</i>	0	0	0	0	0
<i>Single Family</i>	14	1	0	0	14
<i>Industrial</i>	0	0	0	0	0
<i>Other-Residential</i>	4	0	0	0	4
Total Casualties - 2am	18	1	0	0	18
Casualties - 2pm					
<i>Industrial</i>	1	0	0	0	1
<i>Other-Residential</i>	1	0	0	0	1
<i>Educational</i>	1	0	0	0	1
<i>Single Family</i>	5	0	0	0	5
<i>Hotels</i>	0	0	0	0	0
<i>Commuting</i>	0	0	0	0	0
<i>Commercial</i>	6	0	0	0	6
Total Casualties - 2pm	14	1	0	0	15
Casualties - 5pm					
<i>Commuting</i>	0	0	0	0	0
<i>Single Family</i>	5	0	0	0	5
<i>Educational</i>	0	0	0	0	0
<i>Hotels</i>	0	0	0	0	0
<i>Industrial</i>	1	0	0	0	1
<i>Commercial</i>	4	0	0	0	4
<i>Other-Residential</i>	1	0	0	0	1
Total Casualties - 5pm	12	1	0	0	12
San Luis Obispo					
Casualties - 2am					
<i>Commercial</i>	0	0	0	0	0

	Injury Severity Level				Total
	Severity 1	Severity 2	Severity 3	Severity 4	
California					
San Luis Obispo					
Casualties - 2am					
<i>Other-Residential</i>	0	0	0	0	0
<i>Industrial</i>	0	0	0	0	0
<i>Single Family</i>	0	0	0	0	0
<i>Commuting</i>	0	0	0	0	0
<i>Educational</i>	0	0	0	0	0
<i>Hotels</i>	0	0	0	0	0
Total Casualties - 2am	0	0	0	0	0
Casualties - 2pm					
<i>Single Family</i>	0	0	0	0	0
<i>Educational</i>	0	0	0	0	0
<i>Other-Residential</i>	0	0	0	0	0
<i>Hotels</i>	0	0	0	0	0
<i>Commuting</i>	0	0	0	0	0
<i>Commercial</i>	0	0	0	0	0
<i>Industrial</i>	0	0	0	0	0
Total Casualties - 2pm	0	0	0	0	0
Casualties - 5pm					
<i>Industrial</i>	0	0	0	0	0
<i>Other-Residential</i>	0	0	0	0	0
<i>Commuting</i>	0	0	0	0	0
<i>Single Family</i>	0	0	0	0	0
<i>Commercial</i>	0	0	0	0	0
<i>Hotels</i>	0	0	0	0	0
<i>Educational</i>	0	0	0	0	0
Total Casualties - 5pm	0	0	0	0	0
San Mateo					
Casualties - 2am					
<i>Industrial</i>	1	0	0	0	1
<i>Other-Residential</i>	12	1	0	0	13
<i>Single Family</i>	12	0	0	0	13
<i>Commercial</i>	0	0	0	0	0
<i>Educational</i>	0	0	0	0	0
<i>Commuting</i>	0	0	0	0	0
<i>Hotels</i>	0	0	0	0	0
Total Casualties - 2am	25	1	0	0	26
Casualties - 2pm					
<i>Other-Residential</i>	4	0	0	0	4
<i>Single Family</i>	3	0	0	0	3
<i>Commuting</i>	0	0	0	0	0
<i>Commercial</i>	25	1	0	0	27
<i>Educational</i>	3	0	0	0	4

	Injury Severity Level				Total
	Severity 1	Severity 2	Severity 3	Severity 4	
California					
San Mateo					
Casualties - 2pm					
<i>Hotels</i>	0	0	0	0	0
<i>Industrial</i>	4	0	0	0	4
Total Casualties - 2pm	39	2	0	0	41
Casualties - 5pm					
<i>Commercial</i>	16	1	0	0	17
<i>Industrial</i>	2	0	0	0	2
<i>Other-Residential</i>	4	0	0	0	5
<i>Single Family</i>	4	0	0	0	4
<i>Educational</i>	0	0	0	0	0
<i>Commuting</i>	1	1	1	0	3
<i>Hotels</i>	0	0	0	0	0
Total Casualties - 5pm	28	2	1	0	32
Santa Barbara					
Casualties - 2am					
<i>Industrial</i>	0	0	0	0	0
<i>Commercial</i>	0	0	0	0	0
<i>Other-Residential</i>	0	0	0	0	0
<i>Commuting</i>	0	0	0	0	0
<i>Educational</i>	0	0	0	0	0
<i>Single Family</i>	0	0	0	0	0
<i>Hotels</i>	0	0	0	0	0
Total Casualties - 2am	0	0	0	0	0
Casualties - 2pm					
<i>Commercial</i>	0	0	0	0	0
<i>Single Family</i>	0	0	0	0	0
<i>Other-Residential</i>	0	0	0	0	0
<i>Commuting</i>	0	0	0	0	0
<i>Educational</i>	0	0	0	0	0
<i>Hotels</i>	0	0	0	0	0
<i>Industrial</i>	0	0	0	0	0
Total Casualties - 2pm	0	0	0	0	0
Casualties - 5pm					
<i>Other-Residential</i>	0	0	0	0	0
<i>Single Family</i>	0	0	0	0	0
<i>Commercial</i>	0	0	0	0	0
<i>Commuting</i>	0	0	0	0	0
<i>Educational</i>	0	0	0	0	0
<i>Industrial</i>	0	0	0	0	0
<i>Hotels</i>	0	0	0	0	0
Total Casualties - 5pm	0	0	0	0	0

Injury Severity Level

Severity 1 Severity 2 Severity 3 Severity 4 Total

California

Santa Clara

Casualties - 2am

<i>Commuting</i>	0	0	0	0	1
<i>Educational</i>	0	0	0	0	0
<i>Single Family</i>	396	19	0	1	416
<i>Hotels</i>	1	0	0	0	1
<i>Industrial</i>	19	3	0	1	23
<i>Commercial</i>	12	2	0	1	15
<i>Other-Residential</i>	475	80	9	18	581
Total Casualties - 2am	903	105	10	20	1,037

Casualties - 2pm

<i>Industrial</i>	141	23	3	5	172
<i>Commercial</i>	819	152	18	36	1,026
<i>Single Family</i>	105	5	0	0	111
<i>Commuting</i>	2	2	4	1	8
<i>Hotels</i>	0	0	0	0	0
<i>Other-Residential</i>	149	27	3	6	184
<i>Educational</i>	176	24	2	4	206
Total Casualties - 2pm	1,392	233	30	52	1,707

Casualties - 5pm

<i>Industrial</i>	88	14	2	3	107
<i>Hotels</i>	0	0	0	0	0
<i>Other-Residential</i>	180	31	4	7	221
<i>Commercial</i>	588	109	13	26	737
<i>Commuting</i>	34	44	77	15	170
<i>Single Family</i>	145	7	0	0	153
<i>Educational</i>	22	2	0	0	24
Total Casualties - 5pm	1,057	209	96	51	1,413

Santa Cruz

Casualties - 2am

<i>Hotels</i>	0	0	0	0	0
<i>Educational</i>	0	0	0	0	0
<i>Industrial</i>	0	0	0	0	0
<i>Other-Residential</i>	9	1	0	0	10
<i>Single Family</i>	7	0	0	0	7
<i>Commercial</i>	0	0	0	0	0
<i>Commuting</i>	0	0	0	0	0
Total Casualties - 2am	17	1	0	0	18

Casualties - 2pm

<i>Industrial</i>	2	0	0	0	3
<i>Other-Residential</i>	3	0	0	0	3
<i>Commercial</i>	15	1	0	0	16
<i>Commuting</i>	0	0	0	0	0

	Injury Severity Level				Total
	Severity 1	Severity 2	Severity 3	Severity 4	
California					
Santa Cruz					
Casualties - 2pm					
<i>Educational</i>	4	0	0	0	4
<i>Single Family</i>	2	0	0	0	2
<i>Hotels</i>	0	0	0	0	0
Total Casualties - 2pm	26	2	0	0	28
Casualties - 5pm					
<i>Industrial</i>	1	0	0	0	2
<i>Other-Residential</i>	3	0	0	0	4
<i>Commercial</i>	10	1	0	0	11
<i>Commuting</i>	0	0	0	0	0
<i>Single Family</i>	3	0	0	0	3
<i>Hotels</i>	0	0	0	0	0
<i>Educational</i>	0	0	0	0	0
Total Casualties - 5pm	18	1	0	0	20
Solano					
Casualties - 2am					
<i>Industrial</i>	0	0	0	0	0
<i>Other-Residential</i>	0	0	0	0	0
<i>Commercial</i>	0	0	0	0	0
<i>Educational</i>	0	0	0	0	0
<i>Commuting</i>	0	0	0	0	0
<i>Single Family</i>	0	0	0	0	0
<i>Hotels</i>	0	0	0	0	0
Total Casualties - 2am	1	0	0	0	1
Casualties - 2pm					
<i>Single Family</i>	0	0	0	0	0
<i>Other-Residential</i>	0	0	0	0	0
<i>Commercial</i>	1	0	0	0	1
<i>Educational</i>	0	0	0	0	0
<i>Commuting</i>	0	0	0	0	0
<i>Hotels</i>	0	0	0	0	0
<i>Industrial</i>	0	0	0	0	0
Total Casualties - 2pm	1	0	0	0	1
Casualties - 5pm					
<i>Commercial</i>	0	0	0	0	0
<i>Other-Residential</i>	0	0	0	0	0
<i>Single Family</i>	0	0	0	0	0
<i>Educational</i>	0	0	0	0	0
<i>Commuting</i>	0	0	0	0	0
<i>Hotels</i>	0	0	0	0	0
<i>Industrial</i>	0	0	0	0	0

	Injury Severity Level				Total
	Severity 1	Severity 2	Severity 3	Severity 4	
California					
Solano					
Total Casualties - 5pm	1	0	0	0	1
Sonoma					
Casualties - 2am					
Single Family	0	0	0	0	0
Other-Residential	0	0	0	0	0
Commercial	0	0	0	0	0
Commuting	0	0	0	0	0
Hotels	0	0	0	0	0
Educational	0	0	0	0	0
Industrial	0	0	0	0	0
Total Casualties - 2am	0	0	0	0	0
Casualties - 2pm					
Single Family	0	0	0	0	0
Commuting	0	0	0	0	0
Educational	0	0	0	0	0
Hotels	0	0	0	0	0
Industrial	0	0	0	0	0
Other-Residential	0	0	0	0	0
Commercial	0	0	0	0	0
Total Casualties - 2pm	0	0	0	0	0
Casualties - 5pm					
Single Family	0	0	0	0	0
Commercial	0	0	0	0	0
Commuting	0	0	0	0	0
Hotels	0	0	0	0	0
Educational	0	0	0	0	0
Industrial	0	0	0	0	0
Other-Residential	0	0	0	0	0
Total Casualties - 5pm	0	0	0	0	0
Stanislaus					
Casualties - 2am					
Hotels	0	0	0	0	0
Industrial	0	0	0	0	0
Commercial	0	0	0	0	0
Single Family	2	0	0	0	2
Other-Residential	2	0	0	0	2
Commuting	0	0	0	0	0
Educational	0	0	0	0	0
Total Casualties - 2am	4	0	0	0	4
Casualties - 2pm					
Industrial	1	0	0	0	1

	Injury Severity Level				Total
	Severity 1	Severity 2	Severity 3	Severity 4	
California					
Stanislaus					
Casualties - 2pm					
<i>Other-Residential</i>	1	0	0	0	1
<i>Commercial</i>	3	0	0	0	4
<i>Commuting</i>	0	0	0	0	0
<i>Educational</i>	1	0	0	0	1
<i>Single Family</i>	1	0	0	0	1
<i>Hotels</i>	0	0	0	0	0
Total Casualties - 2pm	6	0	0	0	6
Casualties - 5pm					
<i>Industrial</i>	0	0	0	0	0
<i>Other-Residential</i>	1	0	0	0	1
<i>Commuting</i>	0	0	0	0	0
<i>Single Family</i>	1	0	0	0	1
<i>Commercial</i>	2	0	0	0	3
<i>Hotels</i>	0	0	0	0	0
<i>Educational</i>	0	0	0	0	0
Total Casualties - 5pm	4	0	0	0	5
Sutter					
Casualties - 2am					
<i>Educational</i>	0	0	0	0	0
<i>Commuting</i>	0	0	0	0	0
<i>Hotels</i>	0	0	0	0	0
<i>Industrial</i>	0	0	0	0	0
<i>Other-Residential</i>	0	0	0	0	0
<i>Single Family</i>	0	0	0	0	0
<i>Commercial</i>	0	0	0	0	0
Total Casualties - 2am	0	0	0	0	0
Casualties - 2pm					
<i>Industrial</i>	0	0	0	0	0
<i>Commuting</i>	0	0	0	0	0
<i>Other-Residential</i>	0	0	0	0	0
<i>Single Family</i>	0	0	0	0	0
<i>Commercial</i>	0	0	0	0	0
<i>Hotels</i>	0	0	0	0	0
<i>Educational</i>	0	0	0	0	0
Total Casualties - 2pm	0	0	0	0	0
Casualties - 5pm					
<i>Commuting</i>	0	0	0	0	0
<i>Commercial</i>	0	0	0	0	0
<i>Educational</i>	0	0	0	0	0
<i>Single Family</i>	0	0	0	0	0
<i>Hotels</i>	0	0	0	0	0

	Injury Severity Level				Total
	Severity 1	Severity 2	Severity 3	Severity 4	
California					
Sutter					
Casualties - 5pm					
<i>Industrial</i>	0	0	0	0	0
<i>Other-Residential</i>	0	0	0	0	0
Total Casualties - 5pm	0	0	0	0	0
Tulare					
Casualties - 2am					
<i>Commercial</i>	0	0	0	0	0
<i>Commuting</i>	0	0	0	0	0
<i>Single Family</i>	0	0	0	0	0
<i>Educational</i>	0	0	0	0	0
<i>Hotels</i>	0	0	0	0	0
<i>Industrial</i>	0	0	0	0	0
<i>Other-Residential</i>	0	0	0	0	0
Total Casualties - 2am	0	0	0	0	0
Casualties - 2pm					
<i>Industrial</i>	0	0	0	0	0
<i>Hotels</i>	0	0	0	0	0
<i>Commercial</i>	0	0	0	0	0
<i>Other-Residential</i>	0	0	0	0	0
<i>Educational</i>	0	0	0	0	0
<i>Commuting</i>	0	0	0	0	0
<i>Single Family</i>	0	0	0	0	0
Total Casualties - 2pm	0	0	0	0	0
Casualties - 5pm					
<i>Other-Residential</i>	0	0	0	0	0
<i>Commercial</i>	0	0	0	0	0
<i>Single Family</i>	0	0	0	0	0
<i>Hotels</i>	0	0	0	0	0
<i>Commuting</i>	0	0	0	0	0
<i>Educational</i>	0	0	0	0	0
<i>Industrial</i>	0	0	0	0	0
Total Casualties - 5pm	0	0	0	0	0
Tuolumne					
Casualties - 2am					
<i>Other-Residential</i>	0	0	0	0	0
<i>Industrial</i>	0	0	0	0	0
<i>Commercial</i>	0	0	0	0	0
<i>Commuting</i>	0	0	0	0	0
<i>Single Family</i>	0	0	0	0	0
<i>Educational</i>	0	0	0	0	0
<i>Hotels</i>	0	0	0	0	0

	Injury Severity Level				Total
	Severity 1	Severity 2	Severity 3	Severity 4	
California					
Tuolumne					
Total Casualties - 2am	0	0	0	0	0
Casualties - 2pm					
Other-Residential	0	0	0	0	0
Commercial	0	0	0	0	0
Single Family	0	0	0	0	0
Educational	0	0	0	0	0
Commuting	0	0	0	0	0
Industrial	0	0	0	0	0
Hotels	0	0	0	0	0
Total Casualties - 2pm	0	0	0	0	0
Casualties - 5pm					
Industrial	0	0	0	0	0
Other-Residential	0	0	0	0	0
Commercial	0	0	0	0	0
Hotels	0	0	0	0	0
Commuting	0	0	0	0	0
Educational	0	0	0	0	0
Single Family	0	0	0	0	0
Total Casualties - 5pm	0	0	0	0	0
Yolo					
Casualties - 2am					
Single Family	0	0	0	0	0
Other-Residential	0	0	0	0	0
Commercial	0	0	0	0	0
Educational	0	0	0	0	0
Commuting	0	0	0	0	0
Hotels	0	0	0	0	0
Industrial	0	0	0	0	0
Total Casualties - 2am	0	0	0	0	0
Casualties - 2pm					
Industrial	0	0	0	0	0
Hotels	0	0	0	0	0
Educational	0	0	0	0	0
Commuting	0	0	0	0	0
Commercial	0	0	0	0	0
Other-Residential	0	0	0	0	0
Single Family	0	0	0	0	0
Total Casualties - 2pm	0	0	0	0	0
Casualties - 5pm					
Other-Residential	0	0	0	0	0
Single Family	0	0	0	0	0

	Injury Severity Level				Total
	Severity 1	Severity 2	Severity 3	Severity 4	
California					
Yolo					
Casualties - 5pm					
Commuting	0	0	0	0	0
Commercial	0	0	0	0	0
Hotels	0	0	0	0	0
Educational	0	0	0	0	0
Industrial	0	0	0	0	0
Total Casualties - 5pm	0	0	0	0	0
Yuba					
Casualties - 2am					
Industrial	0	0	0	0	0
Other-Residential	0	0	0	0	0
Commercial	0	0	0	0	0
Educational	0	0	0	0	0
Single Family	0	0	0	0	0
Commuting	0	0	0	0	0
Hotels	0	0	0	0	0
Total Casualties - 2am	0	0	0	0	0
Casualties - 2pm					
Commercial	0	0	0	0	0
Commuting	0	0	0	0	0
Single Family	0	0	0	0	0
Other-Residential	0	0	0	0	0
Industrial	0	0	0	0	0
Hotels	0	0	0	0	0
Educational	0	0	0	0	0
Total Casualties - 2pm	0	0	0	0	0
Casualties - 5pm					
Hotels	0	0	0	0	0
Educational	0	0	0	0	0
Industrial	0	0	0	0	0
Other-Residential	0	0	0	0	0
Single Family	0	0	0	0	0
Commercial	0	0	0	0	0
Commuting	0	0	0	0	0
Total Casualties - 5pm	0	0	0	0	0
Region Total	NA	NA	NA	NA	NA

Totals only reflect data for those census tracts/blocks included in the user's study region and will reflect the entire county/state only if all of the census blocks for that county/states were selected at the time of study region creation.

Debris Summary Report

November 08, 2024

All values are in thousands of tons.

	Brick, Wood & Others	Concrete & Steel	Total
California			
Fresno	1	1	2
Alameda	126	160	286
Solano	1	1	2
San Mateo	20	22	41
Tuolumne	0	0	0
Kings	0	0	0
San Joaquin	24	9	33
San Luis Obispo	0	0	0
Madera	0	0	0
Tulare	0	0	0
Colusa	0	0	0
Napa	0	0	0
Contra Costa	11	6	17
El Dorado	0	0	0
Kern	0	0	0
Amador	0	0	0
Santa Cruz	19	24	43
Lake	0	0	0
Monterey	34	49	83

	Brick, Wood & Others	Concrete & Steel	Total
Sacramento	1	1	1
Mariposa	0	0	0
Yolo	0	0	0
Calaveras	0	0	0
Yuba	0	0	0
Stanislaus	6	5	12
Sonoma	0	0	0
Santa Barbara	0	0	0
Santa Clara	565	906	1,471
San Benito	49	104	153
San Francisco	43	11	54
Merced	4	5	10
Placer	0	0	0
Marin	0	0	1
Sutter	0	0	0
Total	906	1,305	2,210
Region Total	906	1,305	2,210

Totals only reflect data for those census tracts/blocks included in the user's study region and will reflect the entire county/state only if all of the census blocks for that county/states were selected at the time of study region creation.

Direct Economic Losses For Buildings

November 8, 2024

All values are in thousands of dollars

	Capital Stock Losses				Loss Ratio %	Income Losses				Total Loss
	Cost Structural Damage	Cost Non-struct. Damage	Cost Contents Damage	Inventory Loss		Relocation Loss	Capital Related Loss	Wages Losses	Rental Income Loss	
California										
Contra Costa	22,580	245,109	120,598	9,900	0.12	2,606	2,523	3,529	3,528	410,372
Napa	216	3,123	1,711	228	0.01	23	34	39	43	5,418
Colusa	0	11	8	2	0.00	0	0	0	0	22
Alameda	324,019	2,204,586	1,088,567	93,785	0.76	87,879	55,497	75,698	63,938	3,993,969
San Joaquin	26,644	215,861	120,354	14,620	0.17	6,280	2,939	3,689	4,338	394,725
Tuolumne	0	25	18	2	0.00	0	0	0	0	44
Tulare	28	1,416	961	202	0.00	2	5	6	7	2,626
Madera	342	3,720	2,149	494	0.01	34	23	25	41	6,829
Fresno	1,976	24,113	14,138	2,879	0.02	292	297	335	395	44,425

	Capital Stock Losses				Loss Ratio %	Income Losses				Total Loss
	Cost Structural Damage	Cost Non-struct. Damage	Cost Contents Damage	Inventory Loss		Relocation Loss	Capital Related Loss	Wages Losses	Rental Income Loss	
Kings	130	2,197	1,216	158	0.01	18	27	32	30	3,808
San Luis Obispo	104	1,839	960	101	0.00	14	27	24	31	3,101
Solano	1,969	23,740	13,092	1,609	0.03	286	300	375	381	41,754
San Mateo	52,847	432,385	211,958	15,485	0.31	11,272	8,820	10,728	12,639	756,134
Yolo	151	3,420	2,132	244	0.01	14	23	29	33	6,047
San Benito	129,183	660,511	289,152	25,360	5.96	52,879	29,785	35,535	21,397	1,243,801
San Francisco	37,814	131,781	74,495	4,520	0.11	10,696	7,736	8,834	15,145	291,021
Stanislaus	11,006	111,391	63,586	8,817	0.12	2,032	1,275	1,474	2,002	201,584
Sutter	3	55	41	15	0.00	0	0	0	0	114
Santa Clara	1,494,320	8,000,629	3,683,247	282,047	2.49	506,229	350,596	402,308	322,556	15,041,933
Sonoma	156	2,611	1,621	261	0.00	18	24	27	31	4,749
Calaveras	4	96	72	24	0.00	0	1	1	1	200
Yuba	0	5	4	0	0.00	0	0	0	0	9
Merced	14,319	51,351	31,496	12,285	0.13	1,900	896	802	770	113,820
Santa Barbara	5	274	180	27	0.00	1	1	2	2	491
Placer	9	528	355	34	0.00	1	3	3	4	935
Marin	569	8,444	4,689	455	0.01	73	110	113	133	14,587
Kern	6	217	139	31	0.00	1	0	1	1	396

	Capital Stock Losses				Loss Ratio %	Income Losses				Total Loss
	Cost Structural Damage	Cost Non-struct. Damage	Cost Contents Damage	Inventory Loss		Relocation Loss	Capital Related Loss	Wages Losses	Rental Income Loss	
El Dorado	0	6	4	0	0.00	0	0	0	0	10
Lake	0	1	0	0	0.00	0	0	0	0	1
Santa Cruz	42,855	227,379	114,799	18,730	0.49	11,126	8,779	10,714	7,725	442,107
Mariposa	0	5	3	0	0.00	0	0	0	0	9
Amador	0	40	28	3	0.00	0	0	0	0	72
Sacramento	1,246	13,002	7,271	738	0.01	318	361	530	493	23,960
Monterey	74,380	426,868	218,803	39,633	0.66	23,648	12,875	14,797	16,104	827,108
Total	2,236,883	12,796,740	6,067,848	532,688	0.34	717,644	482,957	569,652	471,769	23,876,180
Region Total	2,236,883	12,796,740	6,067,848	532,688	0.34	717,644	482,957	569,652	471,769	23,876,180

Totals only reflect data for those census tracts/blocks included in the user's study region and will reflect the entire county/state only if all of the census blocks for that county/states were selected at the time of study region creation.

Direct Economic Loss For Transportation

November 08, 2024

All values are in thousands of dollars

	Highway	Railway	Light Rail	Bus Facility	Ports	Ferries	Airport	Total
California								
Alameda								
Segments	0	0	0					0
Bridges	18,218	3,385	8					21,610
Tunnels	13	0	0					13
Facilities		3,187	0	95	10,259	210	29,281	43,033
Total	18,230	6,572	8	95	10,259	210	29,281	64,656
Amador								
Segments	0	0	0					0
Bridges	0	0	0					0
Tunnels	0	0	0					0
Facilities		0	0	0	0	0	51	51
Total	0	0	0	0	0	0	51	51
Calaveras								
Segments	0	0	0					0
Bridges	0	0	0					0
Tunnels	0	0	0					0
Facilities		0	0	0	0	0	102	102

	Highway	Railway	Light Rail	Bus Facility	Ports	Ferries	Airport	Total
Total	0	0	0	0	0	0	102	102
Colusa								
Segments	0	0	0					0
Bridges	0	0	0					0
Tunnels	0	0	0					0
Facilities		0	0	0	0	0	6	6
Total	0	0	0	0	0	0	6	6
Contra Costa								
Segments	0	0	0					0
Bridges	956	46	0					1,002
Tunnels	3	0	0					3
Facilities		925	703	0	10,376	218	1,165	13,388
Total	959	971	703	0	10,376	218	1,165	14,393
El Dorado								
Segments	0	0	0					0
Bridges	0	0	0					0
Tunnels	0	0	0					0
Facilities		0	0	7	0	0	31	38
Total	0	0	0	7	0	0	31	38
Fresno								
Segments	0	0	0					0
Bridges	603	4	0					607
Tunnels	0	0	0					0
Facilities		231	0	21	0	0	1,639	1,891

	Highway	Railway	Light Rail	Bus Facility	Ports	Ferries	Airport	Total
Total	603	235	0	21	0	0	1,639	2,497
Kern								
Segments	0	0	0					0
Bridges	1	0	0					1
Tunnels	0	0	0					0
Facilities		66	0	44	0	0	166	275
Total	1	66	0	44	0	0	166	276
Kings								
Segments	0	0	0					0
Bridges	12	0	0					12
Tunnels	0	0	0					0
Facilities		128	0	41	0	0	359	529
Total	12	128	0	41	0	0	359	541
Lake								
Segments	0	0	0					0
Bridges	0	0	0					0
Tunnels	0	0	0					0
Facilities		0	0	0	0	0	6	6
Total	0	0	0	0	0	0	6	6
Madera								
Segments	0	0	0					0
Bridges	34	0	0					34
Tunnels	0	0	0					0
Facilities		26	0	21	0	0	102	149

	Highway	Railway	Light Rail	Bus Facility	Ports	Ferries	Airport	Total
Total	34	26	0	21	0	0	102	183
Marin								
Segments	0	0	0					0
Bridges	311	0	0					311
Tunnels	0	0	0					0
Facilities		0	0	167	1,479	106	217	1,969
Total	311	0	0	167	1,479	106	217	2,280
Mariposa								
Segments	0	0	0					0
Bridges	0	0	0					0
Tunnels	0	0	0					0
Facilities		0	0	10	0	0	51	61
Total	0	0	0	10	0	0	51	61
Merced								
Segments	0	0	0					0
Bridges	664	21	0					685
Tunnels	0	0	0					0
Facilities		51	0	21	0	0	1,108	1,181
Total	664	72	0	21	0	0	1,108	1,866
Monterey								
Segments	0	0	0					0
Bridges	4,200	273	0					4,473
Tunnels	1	0	0					1
Facilities		295	0	1,618	469	0	4,618	7,000

	Highway	Railway	Light Rail	Bus Facility	Ports	Ferries	Airport	Total
Total	4,201	567	0	1,618	469	0	4,618	11,473
Napa								
Segments	0	0	0					0
Bridges	3	2	0					5
Tunnels	0	0	0					0
Facilities		0	0	22	230	0	180	431
Total	3	2	0	22	230	0	180	436
Placer								
Segments	0	0	0					0
Bridges	0	0	0					0
Tunnels	0	0	0					0
Facilities		34	0	2	0	0	62	99
Total	0	34	0	2	0	0	62	99
Sacramento								
Segments	0	0	0					0
Bridges	279	0	0					279
Tunnels	0	0	0					0
Facilities		26	3,024	43	2,311	55	4,198	9,656
Total	279	26	3,024	43	2,311	55	4,198	9,934
San Benito								
Segments	0	0	0					0
Bridges	11,736	3,964	0					15,701
Tunnels	0	0	0					0
Facilities		0	0	0	0	0	4,414	4,414

	Highway	Railway	Light Rail	Bus Facility	Ports	Ferries	Airport	Total
Total	11,736	3,964	0	0	0	0	4,414	20,115
San Francisco								
Segments	0	0	0					0
Bridges	2,101	1	0					2,102
Tunnels	8	0	0					8
Facilities		0	133,646	207	8,600	177	1,147	143,776
Total	2,110	1	133,646	207	8,600	177	1,147	145,887
San Joaquin								
Segments	0	0	0					0
Bridges	1,881	36	0					1,917
Tunnels	0	0	0					0
Facilities		1,748	0	91	7,643	218	2,422	12,122
Total	1,881	1,784	0	91	7,643	218	2,422	14,039
San Luis Obispo								
Segments	0	0	0					0
Bridges	28	0	0					28
Tunnels	0	0	0					0
Facilities		77	0	41	294	0	451	863
Total	28	77	0	41	294	0	451	891
San Mateo								
Segments	0	0	0					0
Bridges	14,679	31	0					14,709
Tunnels	8	0	0					8
Facilities		0	0	0	5,732	0	69,157	74,889

	Highway	Railway	Light Rail	Bus Facility	Ports	Ferries	Airport	Total
Total	14,686	31	0	0	5,732	0	69,157	89,606
Santa Barbara								
Segments	0	0	0					0
Bridges	0	0	0					0
Tunnels	0	0	0					0
Facilities		28	0	43	0	0	23	94
Total	0	28	0	43	0	0	23	95
Santa Clara								
Segments	0	0	0					0
Bridges	177,689	10,139	28					187,856
Tunnels	176	0	0					176
Facilities		2,410	117,591	910	3,408	0	83,422	207,741
Total	177,865	12,549	117,618	910	3,408	0	83,422	395,773
Santa Cruz								
Segments	0	0	0					0
Bridges	646	78	0					725
Tunnels	0	0	0					0
Facilities		0	0	352	288	0	2,956	3,596
Total	646	78	0	352	288	0	2,956	4,320
Solano								
Segments	0	0	0					0
Bridges	174	17	0					191
Tunnels	0	0	0					0
Facilities		328	0	136	4,838	177	397	5,875

	Highway	Railway	Light Rail	Bus Facility	Ports	Ferries	Airport	Total
Total	174	345	0	136	4,838	177	397	6,066
Sonoma								
Segments	0	0	0					0
Bridges	56	2	0					58
Tunnels	0	0	0					0
Facilities		0	0	23	377	0	368	768
Total	56	2	0	23	377	0	368	825
Stanislaus								
Segments	0	0	0					0
Bridges	440	14	0					454
Tunnels	0	0	0					0
Facilities		655	0	183	0	0	999	1,837
Total	440	669	0	183	0	0	999	2,291
Sutter								
Segments	0	0	0					0
Bridges	0	0	0					0
Tunnels	0	0	0					0
Facilities		0	0	0	0	0	14	14
Total	0	0	0	0	0	0	14	15
Tulare								
Segments	0	0	0					0
Bridges	1	0	0					1
Tunnels	0	0	0					0
Facilities		0	0	64	0	0	210	274

	Highway	Railway	Light Rail	Bus Facility	Ports	Ferries	Airport	Total
Total	1	0	0	64	0	0	210	275
Tuolumne								
Segments	0	0	0					0
Bridges	0	0	0					0
Tunnels	0	0	0					0
Facilities		0	0	0	0	0	108	108
Total	0	0	0	0	0	0	108	108
Yolo								
Segments	0	0	0					0
Bridges	296	0	0					296
Tunnels	0	0	0					0
Facilities		128	0	0	624	0	153	905
Total	296	128	0	0	624	0	153	1,202
Yuba								
Segments	0	0	0					0
Bridges	0	0	0					0
Tunnels	0	0	0					0
Facilities		0	0	2	0	0	11	14
Total	0	0	0	2	0	0	11	14
Total	235,220	28,356	254,999	4,165	56,927	1,160	209,594	790,422
Region Total	235,220	28,356	254,999	4,165	56,927	1,160	209,594	790,422

Totals only reflect data for those census tracts/blocks included in the user's study region and will reflect the entire county/state only if all of the census blocks for that county/states were selected at the time of study region creation.

Direct Economic Loss For Utilities

November 08, 2024

All values are in thousands of dollars

	Potable Water	Waste Water	Oil Systems	Natural Gas	Electric Power	Communication	Total
California							
Alameda							
<i>Facilities</i>	6,121	79,311	0	0	318,090	411	403,933
<i>Pipelines</i>	2,868	1,441	0	0			4,308
Total	8,989	80,752	0	0	318,090	411	408,241
Amador							
<i>Facilities</i>	0	3	0	0	5,624	0	5,626
<i>Pipelines</i>	14	7	0	0			21
Total	14	10	0	0	5,624	0	5,648
Calaveras							
<i>Facilities</i>	28	371	0	0	14,339	0	14,739
<i>Pipelines</i>	28	14	0	0			43
Total	57	386	0	0	14,339	0	14,782
Colusa							
<i>Facilities</i>	0	3	0	0	6	0	9

	Potable Water	Waste Water	Oil Systems	Natural Gas	Electric Power	Communication	Total
<i>Pipelines</i>	23	12	0	0			35
Total	23	14	0	0	6	0	44
Contra Costa							
<i>Facilities</i>	2,090	24,231	11	0	386,789	26	413,147
<i>Pipelines</i>	583	293	0	0			876
Total	2,673	24,524	11	0	386,789	26	414,023
El Dorado							
<i>Facilities</i>	1	10	0	0	1,532	0	1,543
<i>Pipelines</i>	23	11	0	0			34
Total	23	22	0	0	1,532	0	1,577
Fresno							
<i>Facilities</i>	0	492	0	13	208,104	9	208,618
<i>Pipelines</i>	622	312	0	0			935
Total	622	804	0	13	208,104	9	209,552
Kern							
<i>Facilities</i>	1	3	0	44	6,265	1	6,313
<i>Pipelines</i>	175	88	0	0			263
Total	176	91	0	44	6,265	1	6,576
Kings							
<i>Facilities</i>	0	0	0	134	6,360	1	6,495
<i>Pipelines</i>	78	39	0	0			118

	Potable Water	Waste Water	Oil Systems	Natural Gas	Electric Power	Communication	Total
Total	78	39	0	134	6,360	1	6,612
Lake							
<i>Facilities</i>	1	0	0	0	252	0	253
<i>Pipelines</i>	24	12	0	0			37
Total	26	12	0	0	252	0	289
Madera							
<i>Facilities</i>	0	0	0	0	1,347	1	1,347
<i>Pipelines</i>	125	63	0	0			188
Total	125	63	0	0	1,347	1	1,536
Marin							
<i>Facilities</i>	28	6,589	0	0	56	4	6,677
<i>Pipelines</i>	48	24	0	0			71
Total	76	6,613	0	0	56	4	6,748
Mariposa							
<i>Facilities</i>	0	10	0	0	2,808	2	2,820
<i>Pipelines</i>	21	11	0	0			32
Total	21	21	0	0	2,808	2	2,852
Merced							
<i>Facilities</i>	0	7,709	0	0	378,903	22	386,634
<i>Pipelines</i>	404	203	0	0			607
Total	404	7,912	0	0	378,903	22	387,242

	Potable Water	Waste Water	Oil Systems	Natural Gas	Electric Power	Communication	Total
Monterey							
<i>Facilities</i>	0	40,733	0	0	383,481	642	424,856
<i>Pipelines</i>	1,577	792	0	0			2,369
Total	1,577	41,525	0	0	383,481	642	427,224
Napa							
<i>Facilities</i>	0	492	0	0	312	0	804
<i>Pipelines</i>	24	12	0	0			36
Total	24	504	0	0	312	0	840
Placer							
<i>Facilities</i>	0	748	0	0	2,520	1	3,269
<i>Pipelines</i>	37	19	0	0			56
Total	37	767	0	0	2,520	1	3,324
Sacramento							
<i>Facilities</i>	0	1,229	0	0	11,389	15	12,633
<i>Pipelines</i>	138	69	0	0			207
Total	138	1,299	0	0	11,389	15	12,840
San Benito							
<i>Facilities</i>	0	65,700	0	0	0	193	65,893
<i>Pipelines</i>	4,455	2,238	0	0			6,692
Total	4,455	67,938	0	0	0	193	72,585
San Francisco							

	Potable Water	Waste Water	Oil Systems	Natural Gas	Electric Power	Communication	Total
<i>Facilities</i>	0	10,670	0	0	1,493	17	12,181
<i>Pipelines</i>	74	37	0	0			111
Total	74	10,708	0	0	1,493	17	12,292
San Joaquin							
<i>Facilities</i>	1,101	16,451	3	0	116,395	48	133,999
<i>Pipelines</i>	489	246	0	0			735
Total	1,590	16,697	3	0	116,395	48	134,734
San Luis Obispo							
<i>Facilities</i>	28	2,385	0	0	25,125	6	27,544
<i>Pipelines</i>	140	70	0	0			210
Total	168	2,455	0	0	25,125	6	27,754
San Mateo							
<i>Facilities</i>	0	41,049	0	0	14,989	56	56,094
<i>Pipelines</i>	440	221	0	0			661
Total	440	41,270	0	0	14,989	56	56,755
Santa Barbara							
<i>Facilities</i>	0	5	0	0	8	1	14
<i>Pipelines</i>	56	28	0	0			85
Total	56	33	0	0	8	1	99
Santa Clara							
<i>Facilities</i>	7,322	50,153	0	0	1,120,532	742	1,178,749

	Potable Water	Waste Water	Oil Systems	Natural Gas	Electric Power	Communication	Total
<i>Pipelines</i>	11,416	5,735	0	0			17,151
Total	18,738	55,888	0	0	1,120,532	742	1,195,900
Santa Cruz							
<i>Facilities</i>	0	18,658	0	0	2,945	65	21,668
<i>Pipelines</i>	452	227	0	0			679
Total	452	18,885	0	0	2,945	65	22,346
Solano							
<i>Facilities</i>	0	7,868	2	0	99,239	7	107,116
<i>Pipelines</i>	168	84	0	0			253
Total	168	7,952	2	0	99,239	7	107,368
Sonoma							
<i>Facilities</i>	0	991	0	0	2,202	1	3,195
<i>Pipelines</i>	84	42	0	0			126
Total	84	1,034	0	0	2,202	1	3,321
Stanislaus							
<i>Facilities</i>	0	6,097	0	0	78,971	51	85,119
<i>Pipelines</i>	271	136	0	0			407
Total	271	6,233	0	0	78,971	51	85,526
Sutter							
<i>Facilities</i>	0	123	0	0	6,065	1	6,189
<i>Pipelines</i>	29	14	0	0			43

	Potable Water	Waste Water	Oil Systems	Natural Gas	Electric Power	Communication	Total
Total	29	137	0	0	6,065	1	6,232
Tulare							
<i>Facilities</i>	28	369	0	0	1,805	1	2,203
<i>Pipelines</i>	109	55	0	0			164
Total	137	424	0	0	1,805	1	2,367
Tuolumne							
<i>Facilities</i>	0	123	0	0	14,077	1	14,201
<i>Pipelines</i>	29	15	0	0			44
Total	29	138	0	0	14,077	1	14,245
Yolo							
<i>Facilities</i>	0	492	0	0	502	1	995
<i>Pipelines</i>	38	19	0	0			56
Total	38	511	0	0	502	1	1,051
Yuba							
<i>Facilities</i>	0	10	0	0	1	0	11
<i>Pipelines</i>	17	9	0	0			26
Total	17	19	0	0	1	0	37
Total	41,829	395,679	16	191	3,212,524	2,325	3,652,564
Region Total	41,829	395,679	16	191	3,212,524	2,325	3,652,564

Potable Water

Waste Water

Oil Systems

Natural Gas

Electric Power

Communication

Total

Totals only reflect data for those census tracts/blocks included in the user's study region and will reflect the entire county/state only if all of the census blocks for that county/states were selected at the time of study region creation.

Hazus Quick Assessment Report

Estimated Economic Loss (\$ Billions)

Category	Description	Range
General Building Stock	Building Damage	7.50 - 30.10
	Building Contents	1.10 - 4.50
	Business Interruption	1.10 - 4.50
Infrastructure	Lifelines Damage	
Total		11.90 - 47.80

Preliminary Damage Assessment (PDA) Estimates

Description	Residential	Commercial	Other	Total
Affected	285,200	21,600	10,500	317,300
Minor	29,900	6,800	3,300	40,000
Major	3,000	1,100	540	4,640
Destroyed	320	270	120	710
Total	318,420	29,770	14,460	362,650

Estimated Casualties : Night Time

Severity Level	Description	# Persons
Level 1	Medical Aid	600 - 2,000
Level 2	Hospital Care	60 - 200
Level 3	Life-threatening	10 - 20
Level 4	Fatalities	10 - 40

Estimated Shelter Needs

Type	Households	People
Displaced Households	1,300 - 5,000	3,250 - 12,500
Public Shelter	620	1,560

Earthquake Information

Location :

Origin Time:

Magnitude : 7.26

Epicenter Latitude/Longitude :
/

Depth & Type : /U

Name :
NA

Ground Motion /Attenuation :

Maximum PGA: 1.00

Information Sources:

Comments :

Population and Building Exposure

Population: 16,410,567

Building Exposure : (\$ Millions)

Residential	2,023,907
Commercial	549,009
Other	492,483
Total	3,065,399

Counties : See Appendix

Comments :

Major Metro Area :

*Hazus damage estimates are presented using FEMA Preliminary Damage Assessment (PDA) categories. These estimates should be used for planning purposes and may not reflect actual observed damages from the PDA process.

Disclaimer:

The estimates of social and economic impacts contained in this report were produced using HAZUS loss estimation methodology software which is based on current scientific and engineering knowledge. There are uncertainties inherent in any loss estimation technique. Therefore, there may be significant differences between the modeled results contained in this report and the actual social and economic losses following a specific earthquake. These results can be improved by using enhanced inventory, geotechnical, and observed ground motion data.

Hazus Quick Assessment Report

Estimated Economic Loss (\$ Billions)

Category	Description	Range
General Building Stock	Building Damage	7.50 - 30.10
	Building Contents	1.10 - 4.50
	Business Interruption	1.10 - 4.50
Infrastructure	Lifelines Damage	
Total		11.90 - 47.80

Preliminary Damage Assessment (PDA) Estimates

Description	Residential	Commercial	Other	Total
Affected	285,200	21,600	10,500	317,300
Minor	29,900	6,800	3,300	40,000
Major	3,000	1,100	540	4,640
Destroyed	320	270	120	710
Total	318,420	29,770	14,460	362,650

Estimated Casualties : Day Time

Severity Level	Description	# Persons
Level 1	Medical Aid	1,000 - 4,000
Level 2	Hospital Care	160 - 600
Level 3	Life-threatening	20 - 80
Level 4	Fatalities	40 - 140

Estimated Shelter Needs

Type	Households	People
Displaced Households	1,300 - 5,000	3,250 - 12,500
Public Shelter	620	1,560

Comments :

*Hazus damage estimates are presented using FEMA Preliminary Damage Assessment (PDA) categories. These estimates should be used for planning purposes and may not reflect actual observed damages from the PDA process.

Disclaimer:

The estimates of social and economic impacts contained in this report were produced using HAZUS loss estimation methodology software which is based on current scientific and engineering knowledge. There are uncertainties inherent in any loss estimation technique. Therefore, there may be significant differences between the modeled results contained in this report and the actual social and economic losses following a specific earthquake. These results can be improved by using enhanced inventory, geotechnical, and observed ground motion data.

Earthquake Information

Location :

Origin Time:

Magnitude : 7.26

Epicenter Latitude/Longitude :
/

Depth & Type : /U

Name :
NA

Ground Motion /Attenuation :

Maximum PGA: 1.00

Information Sources:

Comments :

Population and Building Exposure

Population: 16,410,567

Building Exposure : (\$ Millions)

Residential	2,023,907
Commercial	549,009
Other	492,483
Total	3,065,399

Counties : See Appendix

Major Metro Area :

Hazus Quick Assessment Report

Estimated Economic Loss (\$ Billions)

Category	Description	Range
General Building Stock	Building Damage	7.50 - 30.10
	Building Contents	1.10 - 4.50
	Business Interruption	1.10 - 4.50
Infrastructure	Lifelines Damage	
Total		11.90 - 47.80

Preliminary Damage Assessment (PDA) Estimates

Description	Residential	Commercial	Other	Total
Affected	285,200	21,600	10,500	317,300
Minor	29,900	6,800	3,300	40,000
Major	3,000	1,100	540	4,640
Destroyed	320	270	120	710
Total	318,420	29,770	14,460	362,650

Estimated Casualties : Commute Time

Severity Level	Description	# Persons
Level 1	Medical Aid	700 - 3,000
Level 2	Hospital Care	130 - 500
Level 3	Life-threatening	60 - 200
Level 4	Fatalities	30 - 120

Estimated Shelter Needs

Type	Households	People
Displaced Households	1,300 - 5,000	3,250 - 12,500
Public Shelter	620	1,560

Comments :

*Hazus damage estimates are presented using FEMA Preliminary Damage Assessment (PDA) categories. These estimates should be used for planning purposes and may not reflect actual observed damages from the PDA process.

Disclaimer:

The estimates of social and economic impacts contained in this report were produced using HAZUS loss estimation methodology software which is based on current scientific and engineering knowledge. There are uncertainties inherent in any loss estimation technique. Therefore, there may be significant differences between the modeled results contained in this report and the actual social and economic losses following a specific earthquake. These results can be improved by using enhanced inventory, geotechnical, and observed ground motion data.

Earthquake Information

Location :

Origin Time:

Magnitude : 7.26

Epicenter Latitude/Longitude :
/

Depth & Type : /U

Name :
NA

Ground Motion /Attenuation :

Maximum PGA: 1.00

Information Sources:

Comments :

Population and Building Exposure

Population: 16,410,567

Building Exposure : (\$ Millions)

Residential	2,023,907
Commercial	549,009
Other	492,483
Total	3,065,399

Counties : See Appendix

Major Metro Area :

Shelter Summary Report

November 08, 2024

	# of Displaced Households	# of People Needing Short Term Shelter
California		
Fresno	0	0
Alameda	171	86
Solano	0	0
San Mateo	27	14
Tuolumne	0	0
Kings	0	0
San Joaquin	5	3
San Luis Obispo	0	0
Madera	0	0
Tulare	0	0
Colusa	0	0
Napa	0	0
Contra Costa	1	0
El Dorado	0	0
Kern	0	0
Amador	0	0
Santa Cruz	38	28
Lake	0	0
Monterey	69	51
Sacramento	0	0
Mariposa	0	0
Yolo	0	0
Calaveras	0	0
Yuba	0	0
Stanislaus	0	0
Sonoma	0	0
Santa Barbara	0	0
Santa Clara	2,238	1,302
San Benito	114	70
San Francisco	15	7
Merced	1	0
Placer	0	0

	# of Displaced Households	# of People Needing Short Term Shelter
Marin	0	0
Sutter	0	0
Total	2,679	1,562
Region Total	2,679	1,562

Totals only reflect data for those census tracts/blocks included in the user's study region and will reflect the entire county/state only if all of the census blocks for that county/states were selected at the time of study region creation.

