

Hazus: Earthquake Global Risk Report

Region Name: BigLagoonBaldMtn

Earthquake Scenario: biglagoonbaldmtn2011_m7p87_se

Print Date: May 01, 2024

Disclaimer:

Totals only reflect data for those census tracts/blocks included in the user's study region.

The estimates of social and economic impacts contained in this report were produced using Hazus loss estimation methodology software which is based on current scientific and engineering knowledge. There are uncertainties inherent in any loss estimation technique. Therefore, there may be significant differences between the modeled results contained in this report and the actual social and economic losses following a specific earthquake. These results can be improved by using enhanced inventory, geotechnical, and observed ground motion data.

Table of Contents

Section	Page #
General Description of the Region	3
Building and Lifeline Inventory	4
Building Inventory	
Critical Facility Inventory	
Transportation and Utility Lifeline Inventory	
Earthquake Scenario Parameters	7
Direct Earthquake Damage	8
Buildings Damage	
Essential Facilities Damage	
Transportation and Utility Lifeline Damage	
Induced Earthquake Damage	14
Fire Following Earthquake	
Debris Generation	
Social Impact	15
Shelter Requirements	
Casualties	
Economic Loss	17
Building Related Losses	
Transportation and Utility Lifeline Losses	
Appendix A: County Listing for the Region	
Appendix B: Regional Population and Building Value Data	

General Description of the Region

Hazus-MH is a regional earthquake loss estimation model that was developed by the Federal Emergency Management Agency (FEMA) and the National Institute of Building Sciences. The primary purpose of Hazus is to provide a methodology and software application to develop multi-hazard losses at a regional scale. These loss estimates would be used primarily by local, state and regional officials to plan and stimulate efforts to reduce risks from multi-hazards and to prepare for emergency response and recovery.

The earthquake loss estimates provided in this report was based on a region that includes 18 county(ies) from the following state(s):

California

Note:

Appendix A contains a complete listing of the counties contained in the region.

The geographical size of the region is 45,556.28 square miles and contains 473 census tracts. There are over 701 thousand households in the region which has a total population of 1,842,224 people. The distribution of population by Total Region and County is provided in Appendix B.

There are an estimated 725 thousand buildings in the region with a total building replacement value (excluding contents) of 384,954 (millions of dollars). Approximately 89.00 % of the buildings (and 63.00% of the building value) are associated with residential housing.

The replacement value of the transportation and utility lifeline systems is estimated to be 56,969 and 77,134 (millions of dollars) , respectively.

Building and Lifeline Inventory

Building Inventory

Hazus estimates that there are 725 thousand buildings in the region which have an aggregate total replacement value of 384,954 (millions of dollars) . Appendix B provides a general distribution of the building value by Total Region and County.

In terms of building construction types found in the region, wood frame construction makes up 82% of the building inventory. The remaining percentage is distributed between the other general building types.

Critical Facility Inventory

Hazus breaks critical facilities into two (2) groups: essential facilities and high potential loss facilities (HPL). Essential facilities include hospitals, medical clinics, schools, fire stations, police stations and emergency operations facilities. High potential loss facilities include dams, levees, military installations, nuclear power plants and hazardous material sites.

For essential facilities, there are 61 hospitals in the region with a total bed capacity of 3,638 beds. There are 1,082 schools, 575 fire stations, 136 police stations and 21 emergency operation facilities. With respect to high potential loss facilities (HPL), there are no dams identified within the inventory. The inventory also includes no hazardous material sites, no military installations and no nuclear power plants.

Transportation and Utility Lifeline Inventory

Within Hazus, the lifeline inventory is divided between transportation and utility lifeline systems. There are seven (7) transportation systems that include highways, railways, light rail, bus, ports, ferry and airports. There are six (6) utility systems that include potable water, wastewater, natural gas, crude & refined oil, electric power and communications. The lifeline inventory data are provided in Tables 1 and 2.

The total value of the lifeline inventory is over 134,103.00 (millions of dollars). This inventory includes over 4,443.42 miles of highways, 4,883 bridges, 141,901.87 miles of pipes.

Table 1: Transportation System Lifeline Inventory

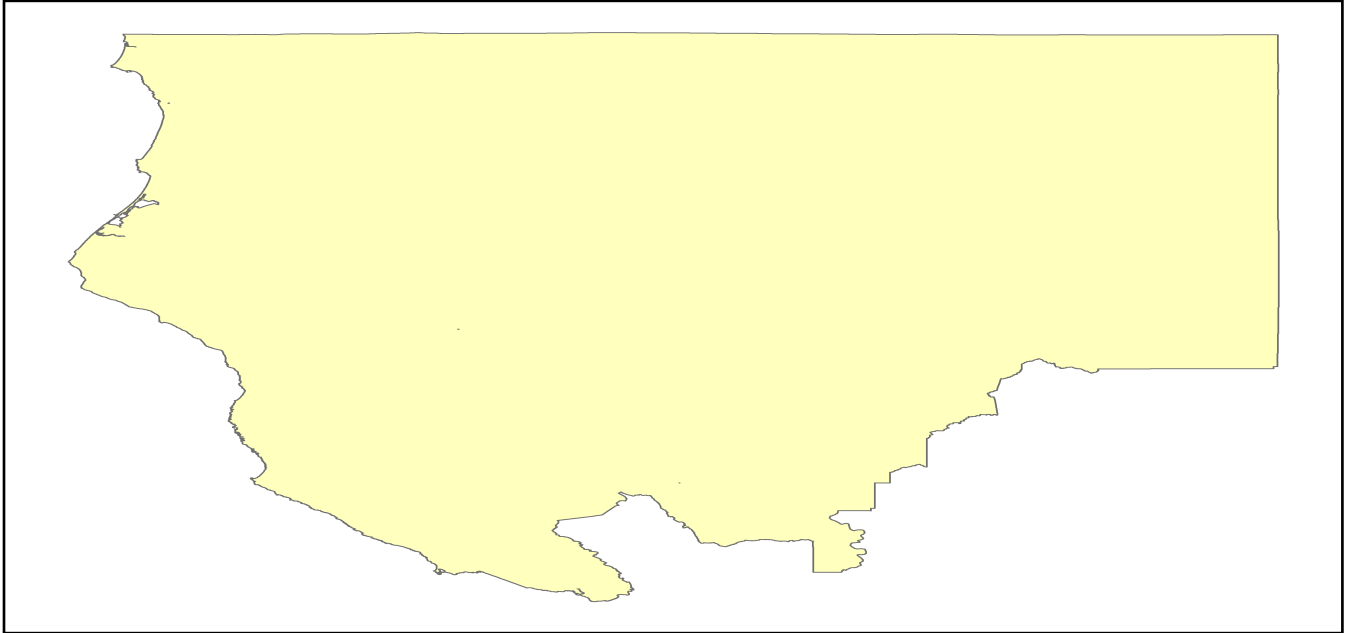
System	Component	# Locations/ # Segments	Replacement value (millions of dollars)
Highway	Bridges	4,883	13166.9442
	Segments	1,334	30817.7337
	Tunnels	4	44.1578
	Subtotal		44028.8357
Railways	Bridges	800	4552.0000
	Facilities	8	21.3040
	Segments	849	7205.9253
	Tunnels	0	0.0000
	Subtotal		11779.2293
Light Rail	Bridges	0	0.0000
	Facilities	0	0.0000
	Segments	0	0.0000
	Tunnels	0	0.0000
	Subtotal		0.0000
Bus	Facilities	10	22.9955
	Subtotal		22.9955
Ferry	Facilities	0	0.0000
	Subtotal		0.0000
Port	Facilities	58	221.0869
	Subtotal		221.0869
Airport	Facilities	71	425.1064
	Runways	84	492.0949
	Subtotal		917.2013
		Total	56,969.30

Table 2: Utility System Lifeline Inventory

System	Component	# Locations / Segments	Replacement value (millions of dollars)
Potable Water	Distribution Lines	NA	2824.9758
	Facilities	6	235.7640
	Pipelines	0	0.0000
		Subtotal	3060.7398
Waste Water	Distribution Lines	NA	1694.9855
	Facilities	66	11348.8188
	Pipelines	0	0.0000
		Subtotal	13043.8043
Natural Gas	Distribution Lines	NA	1129.9903
	Facilities	4	164.9741
	Pipelines	449	8353.1619
		Subtotal	9648.1263
Oil Systems	Facilities	1	0.1180
	Pipelines	0	0.0000
		Subtotal	0.1180
Electrical Power	Facilities	108	51363.7665
		Subtotal	51363.7665
Communication	Facilities	151	17.8180
		Subtotal	17.8180
	Total		77,134.40

Earthquake Scenario

Hazus uses the following set of information to define the earthquake parameters used for the earthquake loss estimate provided in this report.



Scenario Name	biglagoonbaldmtn2011_m7p87_se
Type of Earthquake	User-defined
Fault Name	NA
Historical Epicenter ID #	NA
Probabilistic Return Period	NA
Longitude of Epicenter	NA
Latitude of Epicenter	NA
Earthquake Magnitude	7.87
Depth (km)	NA
Rupture Length (Km)	NA
Rupture Orientation (degrees)	NA
Attenuation Function	NA

Direct Earthquake Damage

Building Damage

Hazus estimates that about 12,421 buildings will be at least moderately damaged. This is over 2.00 % of the buildings in the region. There are an estimated 675 buildings that will be damaged beyond repair. The definition of the 'damage states' is provided in Volume 1: Chapter 5 of the Hazus technical manual. Table 3 below summarizes the expected damage by general occupancy for the buildings in the region. Table 4 below summarizes the expected damage by general building type.

Damage Categories by General Occupancy Type

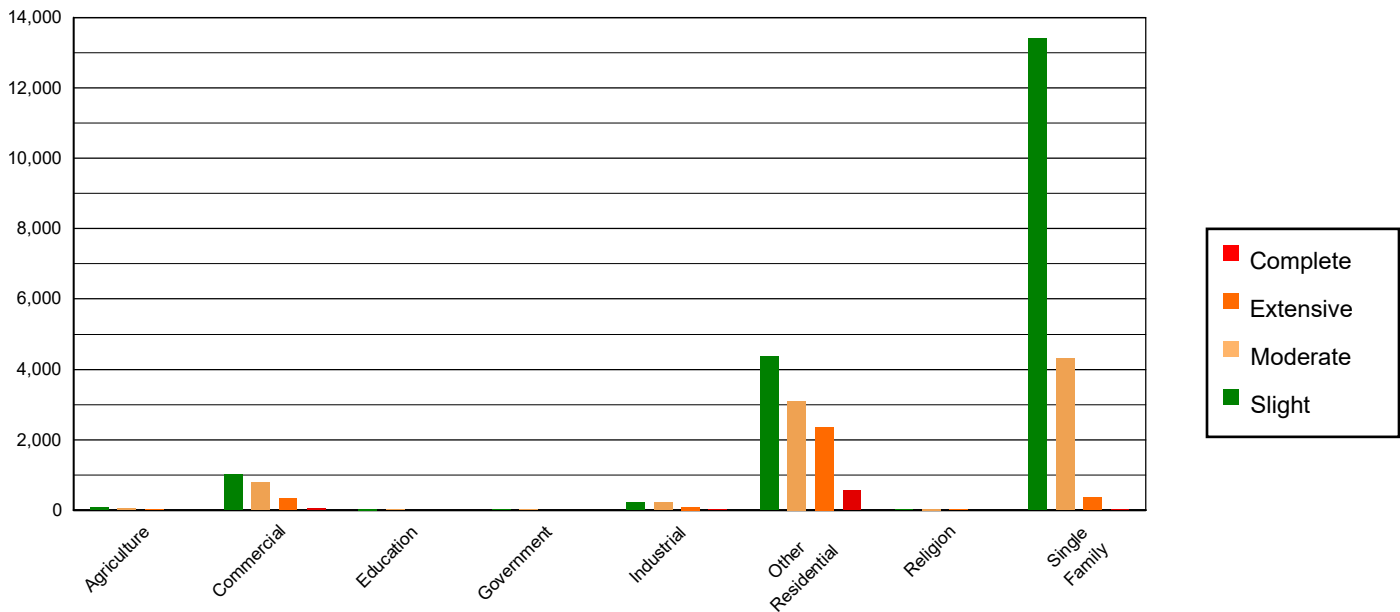


Table 3: Expected Building Damage by Occupancy

	None		Slight		Moderate		Extensive		Complete	
	Count	(%)	Count	(%)	Count	(%)	Count	(%)	Count	(%)
Agriculture	9614.14	1.39	82.12	0.43	47.13	0.55	12.48	0.39	1.12	0.17
Commercial	46606.06	6.72	1024.44	5.34	785.04	9.18	327.70	10.26	60.76	8.99
Education	1502.10	0.22	34.54	0.18	21.27	0.25	3.92	0.12	0.17	0.03
Government	2059.47	0.30	24.30	0.13	19.15	0.22	9.38	0.29	1.71	0.25
Industrial	11860.24	1.71	221.97	1.16	226.63	2.65	91.76	2.87	22.39	3.31
Other Residential	133820.61	19.28	4383.55	22.83	3112.81	36.40	2365.51	74.07	571.52	84.60
Religion	2623.78	0.38	27.97	0.15	32.73	0.38	16.79	0.53	1.74	0.26
Single Family	485941.36	70.02	13400.61	69.80	4307.60	50.37	366.26	11.47	16.17	2.39
Total	694,028		19,200		8,552		3,194		676	

Table 4: Expected Building Damage by Building Type (All Design Levels)

	None		Slight		Moderate		Extensive		Complete	
	Count	(%)	Count	(%)	Count	(%)	Count	(%)	Count	(%)
Wood	571050.50	82.28	16597.35	86.45	5228.30	61.13	448.37	14.04	19.46	2.88
Steel	16957.72	2.44	329.27	1.71	402.77	4.71	185.81	5.82	45.74	6.77
Concrete	17741.92	2.56	493.47	2.57	376.84	4.41	195.65	6.13	43.43	6.43
Precast	11040.13	1.59	208.01	1.08	192.99	2.26	82.36	2.58	10.63	1.57
RM	22133.39	3.19	381.73	1.99	306.13	3.58	113.36	3.55	7.37	1.09
URM	2204.91	0.32	39.08	0.20	63.40	0.74	66.69	2.09	24.91	3.69
MH	52899.18	7.62	1150.60	5.99	1981.93	23.17	2101.57	65.80	524.04	77.57
Total	694,028		19,200		8,552		3,194		676	

*Note:

- RM Reinforced Masonry
- URM Unreinforced Masonry
- MH Manufactured Housing

Essential Facility Damage

Before the earthquake, the region had 3,638 hospital beds available for use. On the day of the earthquake, the model estimates that only 3,195 hospital beds (88.00%) are available for use by patients already in the hospital and those injured by the earthquake. After one week, 93.00% of the beds will be back in service. By 30 days, 99.00% will be operational.

Table 5: Expected Damage to Essential Facilities

Classification	Total	# Facilities		
		At Least Moderate Damage > 50%	Complete Damage > 50%	With Functionality > 50% on day 1
Hospitals	61	7	0	54
Schools	1,082	63	1	981
EOCs	21	1	0	20
PoliceStations	136	9	0	121
FireStations	575	16	0	546

Transportation Lifeline Damage

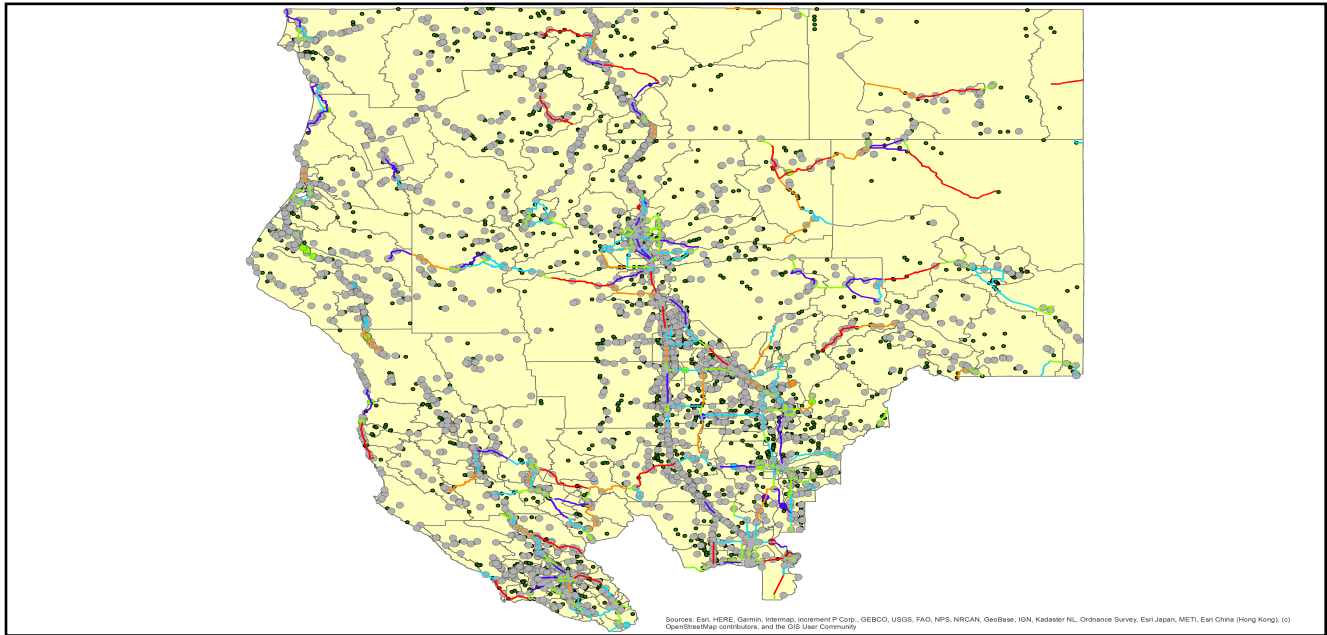


Table 6: Expected Damage to the Transportation Systems

System	Component	Number of Locations_				
		Locations/ Segments	With at Least Mod. Damage	With Complete Damage	With Functionality > 50 %	
					After Day 1	After Day 7
Highway	Segments	1,334	0	0	1,334	1,334
	Bridges	4,883	9	0	4,875	4,877
	Tunnels	4	0	0	4	4
Railways	Segments	849	0	0	849	849
	Bridges	800	0	0	800	800
	Tunnels	0	0	0	0	0
	Facilities	8	0	0	8	8
Light Rail	Segments	0	0	0	0	0
	Bridges	0	0	0	0	0
	Tunnels	0	0	0	0	0
	Facilities	0	0	0	0	0
Bus	Facilities	10	0	0	10	10
Ferry	Facilities	0	0	0	0	0
Port	Facilities	58	1	0	57	58
Airport	Facilities	71	3	0	68	71
	Runways	84	0	0	84	84

Table 6 provides damage estimates for the transportation system.

Note: Roadway segments, railroad tracks and light rail tracks are assumed to be damaged by ground failure only. If ground failure maps are not provided, damage estimates to these components will not be computed.

Tables 7-9 provide information on the damage to the utility lifeline systems. Table 7 provides damage to the utility system facilities. Table 8 provides estimates on the number of leaks and breaks by the pipelines of the utility systems. For electric power and potable water, Hazus performs a simplified system performance analysis. Table 9 provides a summary of the system performance information.

Table 7 : Expected Utility System Facility Damage

System	# of Locations				
	Total #	With at Least Moderate Damage	With Complete Damage	with Functionality > 50 %	
				After Day 1	After Day 7
Potable Water	6	0	0	6	6
Waste Water	66	1	0	58	65
Natural Gas	4	0	0	4	4
Oil Systems	1	0	0	1	1
Electrical Power	108	4	0	107	108
Communication	151	16	0	145	151

Table 8 : Expected Utility System Pipeline Damage (Site Specific)

System	Total Pipelines Length (miles)	Number of Leaks	Number of Breaks
Potable Water	87,768	4076	1019
Waste Water	52,661	2048	512
Natural Gas	1,474	0	0
Oil	0	0	0

Table 9: Expected Potable Water and Electric Power System Performance

	Total # of Households	Number of Households without Service				
		At Day 1	At Day 3	At Day 7	At Day 30	At Day 90
Potable Water	701,259	16,057	13,637	10,133	0	0
Electric Power		15,919	11,696	6,161	1,081	19

Induced Earthquake Damage

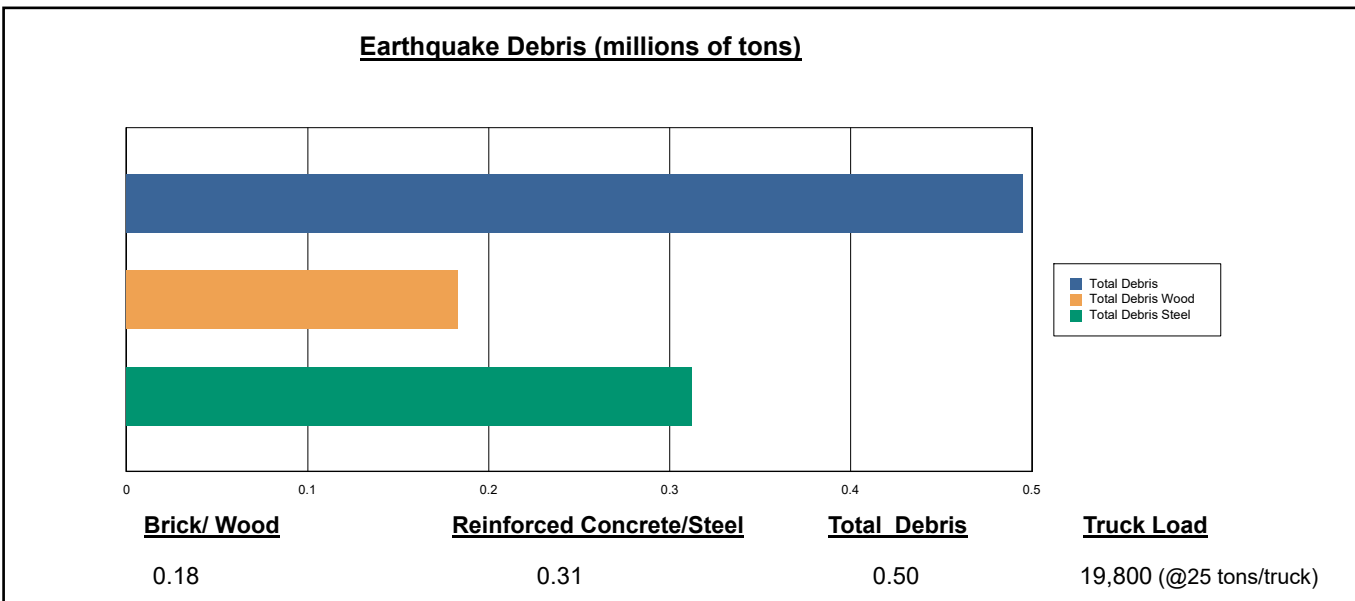
Fire Following Earthquake

Fires often occur after an earthquake. Because of the number of fires and the lack of water to fight the fires, they can often burn out of control. Hazus uses a Monte Carlo simulation model to estimate the number of ignitions and the amount of burnt area. For this scenario, the model estimates that there will be 0 ignitions that will burn about 0.00 sq. mi (0.00 % of the region's total area.) The model also estimates that the fires will displace about 0 people and burn about 0 (millions of dollars) of building value.

Debris Generation

Hazus estimates the amount of debris that will be generated by the earthquake. The model breaks the debris into two general categories: a) Brick/Wood and b) Reinforced Concrete/Steel. This distinction is made because of the different types of material handling equipment required to handle the debris.

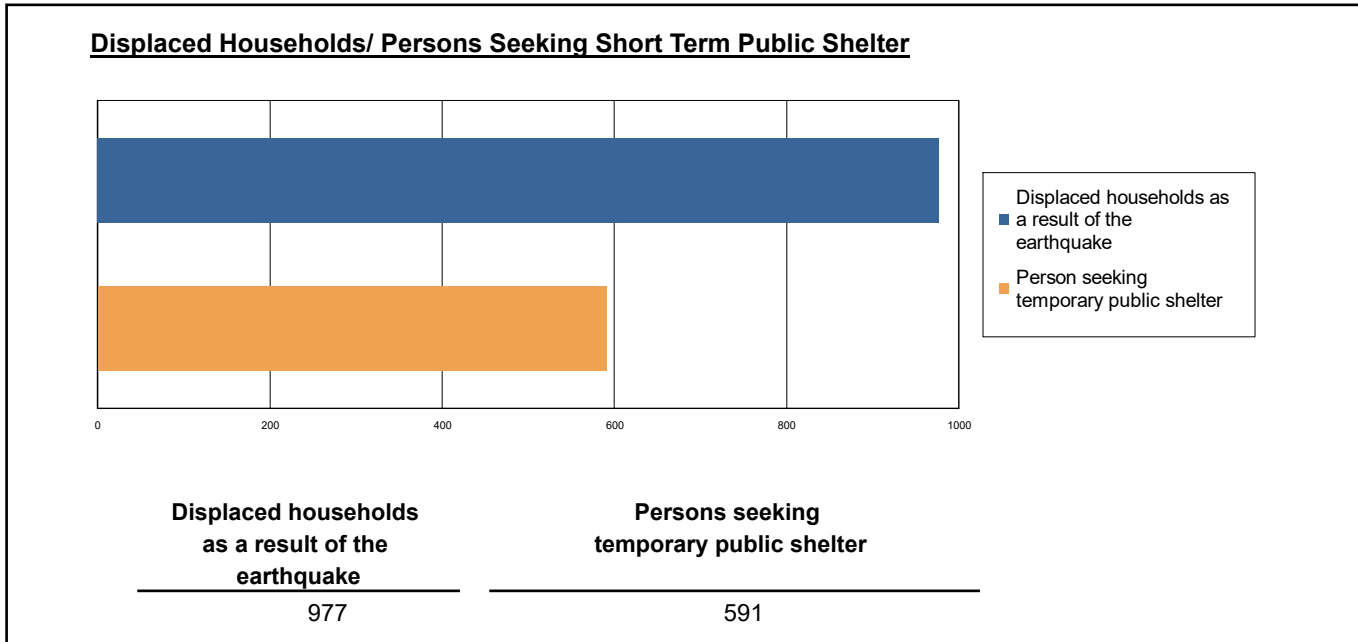
The model estimates that a total of 495,000 tons of debris will be generated. Of the total amount, Brick/Wood comprises 37.00% of the total, with the remainder being Reinforced Concrete/Steel. If the debris tonnage is converted to an estimated number of truckloads, it will require 19,800 truckloads (@25 tons/truck) to remove the debris generated by the earthquake.



Social Impact

Shelter Requirement

Hazus estimates the number of households that are expected to be displaced from their homes due to the earthquake and the number of displaced people that will require accommodations in temporary public shelters. The model estimates 977 households to be displaced due to the earthquake. Of these, 591 people (out of a total population of 1,842,224) will seek temporary shelter in public shelters.



Casualties

Hazus estimates the number of people that will be injured and killed by the earthquake. The casualties are broken down into four (4) severity levels that describe the extent of the injuries. The levels are described as follows;

- Severity Level 1: Injuries will require medical attention but hospitalization is not needed.
- Severity Level 2: Injuries will require hospitalization but are not considered life-threatening
- Severity Level 3: Injuries will require hospitalization and can become life threatening if not promptly treated.
- Severity Level 4: Victims are killed by the earthquake.

The casualty estimates are provided for three (3) times of day: 2:00 AM, 2:00 PM and 5:00 PM. These times represent the periods of the day that different sectors of the community are at their peak occupancy loads. The 2:00 AM estimate considers that the residential occupancy load is maximum, the 2:00 PM estimate considers that the educational, commercial and industrial sector loads are maximum and 5:00 PM represents peak commute time.

Table 10 provides a summary of the casualties estimated for this earthquake

Table 10: Casualty Estimates

		Level 1	Level 2	Level 3	Level 4
2 AM	Commercial	1.62	0.34	0.04	0.08
	Commuting	0.02	0.03	0.04	0.01
	Educational	0.00	0.00	0.00	0.00
	Hotels	0.06	0.01	0.00	0.00
	Industrial	1.35	0.29	0.04	0.07
	Other-Residential	141.41	25.75	1.89	3.39
	Single Family	55.05	4.79	0.06	0.10
	Total	200	31	2	4
2 PM	Commercial	133.94	26.57	3.22	6.23
	Commuting	0.17	0.25	0.39	0.08
	Educational	46.32	7.44	0.66	1.27
	Hotels	0.01	0.00	0.00	0.00
	Industrial	9.94	2.15	0.28	0.55
	Other-Residential	50.23	9.13	0.69	1.22
	Single Family	18.95	1.67	0.03	0.04
	Total	260	47	5	9
5 PM	Commercial	91.10	17.97	2.19	4.20
	Commuting	2.53	3.73	5.87	1.16
	Educational	8.00	1.00	0.05	0.10
	Hotels	0.02	0.00	0.00	0.00
	Industrial	6.22	1.35	0.18	0.34
	Other-Residential	51.62	9.44	0.72	1.28
	Single Family	20.85	1.85	0.03	0.04
	Total	180	35	9	7

Economic Loss

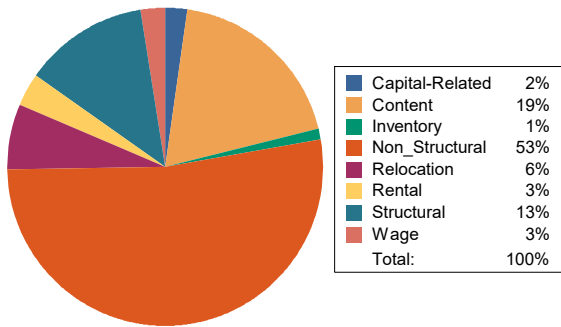
The total economic loss estimated for the earthquake is 3,482.37 (millions of dollars), which includes building and lifeline related losses based on the region's available inventory. The following three sections provide more detailed information about these losses.

Building-Related Losses

The building losses are broken into two categories: direct building losses and business interruption losses. The direct building losses are the estimated costs to repair or replace the damage caused to the building and its contents. The business interruption losses are the losses associated with inability to operate a business because of the damage sustained during the earthquake. Business interruption losses also include the temporary living expenses for those people displaced from their homes because of the earthquake.

The total building-related losses were 2,755.02 (millions of dollars); 15 % of the estimated losses were related to the business interruption of the region. By far, the largest loss was sustained by the residential occupancies which made up over 54 % of the total loss. Table 11 below provides a summary of the losses associated with the building damage.

Earthquake Losses by Loss Type (\$ millions)



Earthquake Losses by Occupancy Type (\$ millions)

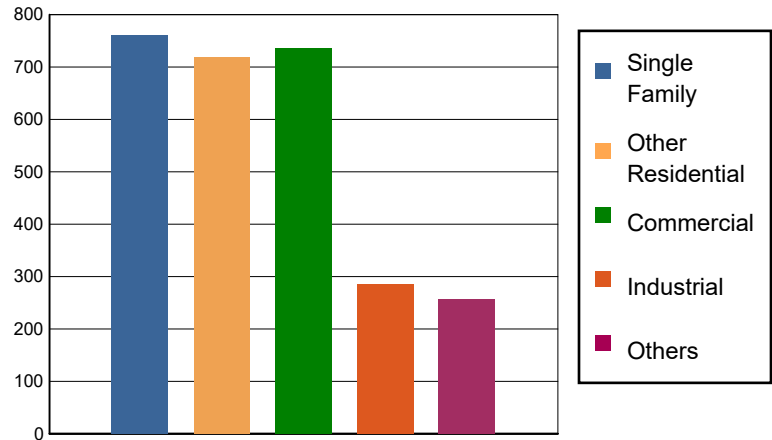


Table 11: Building-Related Economic Loss Estimates
(Millions of dollars)

Category	Area	Single Family	Other Residential	Commercial	Industrial	Others	Total
Income Losses							
	Wage	0.0000	11.0457	43.3392	5.4325	9.1693	68.9867
	Capital-Related	0.0000	4.6931	50.3499	3.3492	1.8543	60.2465
	Rental	13.2381	34.0714	37.2105	2.2738	5.3114	92.1052
	Relocation	48.8773	34.9194	52.5694	10.4699	32.1900	179.0260
	Subtotal	62.1154	84.7296	183.4690	21.5254	48.5250	400.3644
Capital Stock Losses							
	Structural	85.0507	98.7223	95.6121	42.0265	32.2340	353.6456
	Non_Structural	459.2282	441.7411	297.6699	124.9551	126.3691	1,449.9634
	Content	153.8991	92.5504	141.5021	84.2804	46.2807	518.5127
	Inventory	0.0000	0.0000	16.3884	11.9401	4.2030	32.5315
	Subtotal	698.1780	633.0138	551.1725	263.2021	209.0868	2354.6532
	Total	760.29	717.74	734.64	284.73	257.61	2755.02

Transportation and Utility Lifeline Losses

For the transportation and utility lifeline systems, Hazus computes the direct repair cost for each component only. There are no losses computed by Hazus for business interruption due to lifeline outages. Tables 12 & 13 provide a detailed breakdown in the expected lifeline losses.

Table 12: Transportation System Economic Losses
(Millions of dollars)

System	Component	Inventory Value	Economic Loss	Loss Ratio (%)
Highway	Segments	30817.7337	0.0000	0.00
	Bridges	13166.9442	44.2771	0.34
	Tunnels	44.1578	0.0564	0.13
	Subtotal	44028.8357	44.3335	
Railways	Segments	7205.9253	0.0000	0.00
	Bridges	4552.0000	0.1508	0.00
	Tunnels	0.0000	0.0000	0.00
	Facilities	21.3040	0.1748	0.82
	Subtotal	11779.2293	0.3256	
Light Rail	Segments	0.0000	0.0000	0.00
	Bridges	0.0000	0.0000	0.00
	Tunnels	0.0000	0.0000	0.00
	Facilities	0.0000	0.0000	0.00
	Subtotal	0.0000	0.0000	
Bus	Facilities	22.9955	1.7296	7.52
	Subtotal	22.9955	1.7296	
Ferry	Facilities	0.0000	0.0000	0.00
	Subtotal	0.0000	0.0000	
Port	Facilities	221.0869	14.5249	6.57
	Subtotal	221.0869	14.5249	
Airport	Facilities	425.1064	21.8024	5.13
	Runways	492.0949	0.0000	0.00
	Subtotal	917.2013	21.8024	
Total		56,969.35	82.72	

Table 13: Utility System Economic Losses
(Millions of dollars)

System	Component	Inventory Value	Economic Loss	Loss Ratio (%)
Potable Water	Pipelines	0.0000	0.0000	0.00
	Facilities	235.7640	0.4063	0.17
	Distribution Lines	2824.9758	18.3427	0.65
	Subtotal	3060.7398	18.7490	
Waste Water	Pipelines	0.0000	0.0000	0.00
	Facilities	11348.8188	228.2454	2.01
	Distribution Lines	1694.9855	9.2140	0.54
	Subtotal	13043.8043	237.4594	
Natural Gas	Pipelines	8353.1619	0.0000	0.00
	Facilities	164.9741	0.2273	0.14
	Distribution Lines	1129.9903	3.1566	0.28
	Subtotal	9648.1263	3.3839	
Oil Systems	Pipelines	0.0000	0.0000	0.00
	Facilities	0.1180	0.0001	0.08
	Subtotal	0.1180	0.0001	
Electrical Power	Facilities	51363.7665	383.9503	0.75
	Subtotal	51363.7665	383.9503	
Communication	Facilities	17.8180	1.0954	6.15
	Subtotal	17.8180	1.0954	
	Total	77,134.37	644.64	

Appendix A: County Listing for the Region

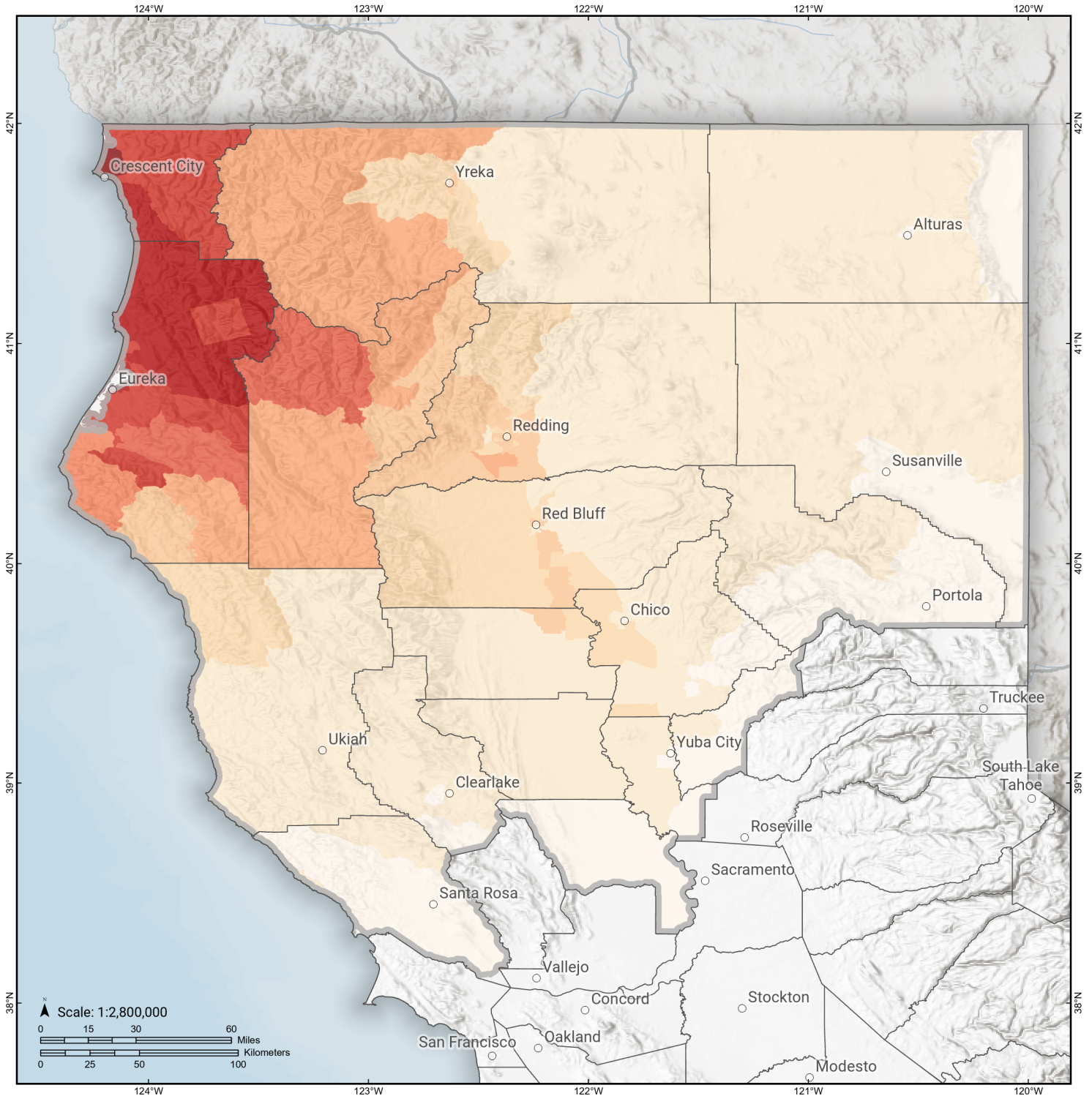
- Butte,CA
- Colusa,CA
- Del Norte,CA
- Glenn,CA
- Humboldt,CA
- Lake,CA
- Lassen,CA
- Mendocino,CA
- Modoc,CA
- Plumas,CA
- Shasta,CA
- Siskiyou,CA
- Sonoma,CA
- Sutter,CA
- Tehama,CA
- Trinity,CA
- Yolo,CA
- Yuba,CA

Appendix B: Regional Population and Building Value Data

State	County Name	Population	Building Value (millions of dollars)		
			Residential	Non-Residential	Total
California	Butte	211,632	25,875	16,639	42,514
	Colusa	21,839	2,244	2,024	4,268
	Del Norte	27,743	5,004	1,876	6,881
	Glenn	28,917	2,791	3,717	6,508
	Humboldt	136,463	19,361	8,683	28,044
	Lake	68,163	9,699	4,530	14,229
	Lassen	32,730	4,033	2,008	6,042
	Mendocino	91,601	14,237	8,510	22,748
	Modoc	8,700	1,435	1,468	2,904
	Plumas	19,790	6,128	2,276	8,405
	Shasta	182,155	21,572	15,715	37,288
	Siskiyou	44,076	6,856	4,758	11,615
	Sonoma	488,863	68,827	35,781	104,609
	Sutter	99,633	10,618	6,448	17,066
	Tehama	65,829	7,705	5,113	12,818
	Trinity	16,112	2,209	1,485	3,694
	Yolo	216,403	24,130	18,343	42,473
Yuba	81,575	8,161	4,677	12,839	
Total Region		1,842,224	240,885	144,051	384,945

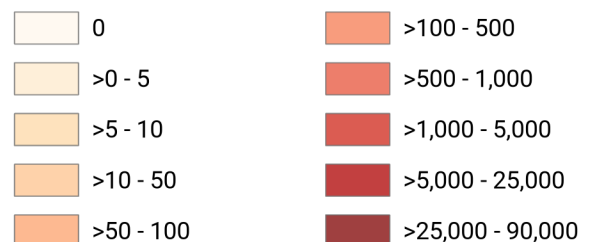
Big Lagoon - Bald Mtn

Debris Generated by Census Tract



Study Region: Big Lagoon - Bald Mtn
Scenario: biglagoonbaldmtn2011_m7p87_se

Debris Generated (in tons)



Big Lagoon - Bald Mtn

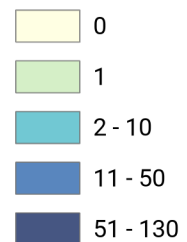
Displaced Households by Census Tract



Study Region: Big Lagoon - Bald Mtn
Scenario: biglagoonbaldmtn2011_m7p87_se



Displaced Households



Big Lagoon - Bald Mtn

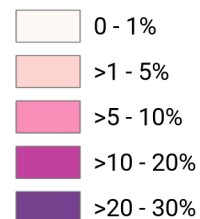
Loss Ratio by Census Tract



Study Region: Big Lagoon - Bald Mtn
Scenario: biglagoonbaldmtn2011_m7p87_se

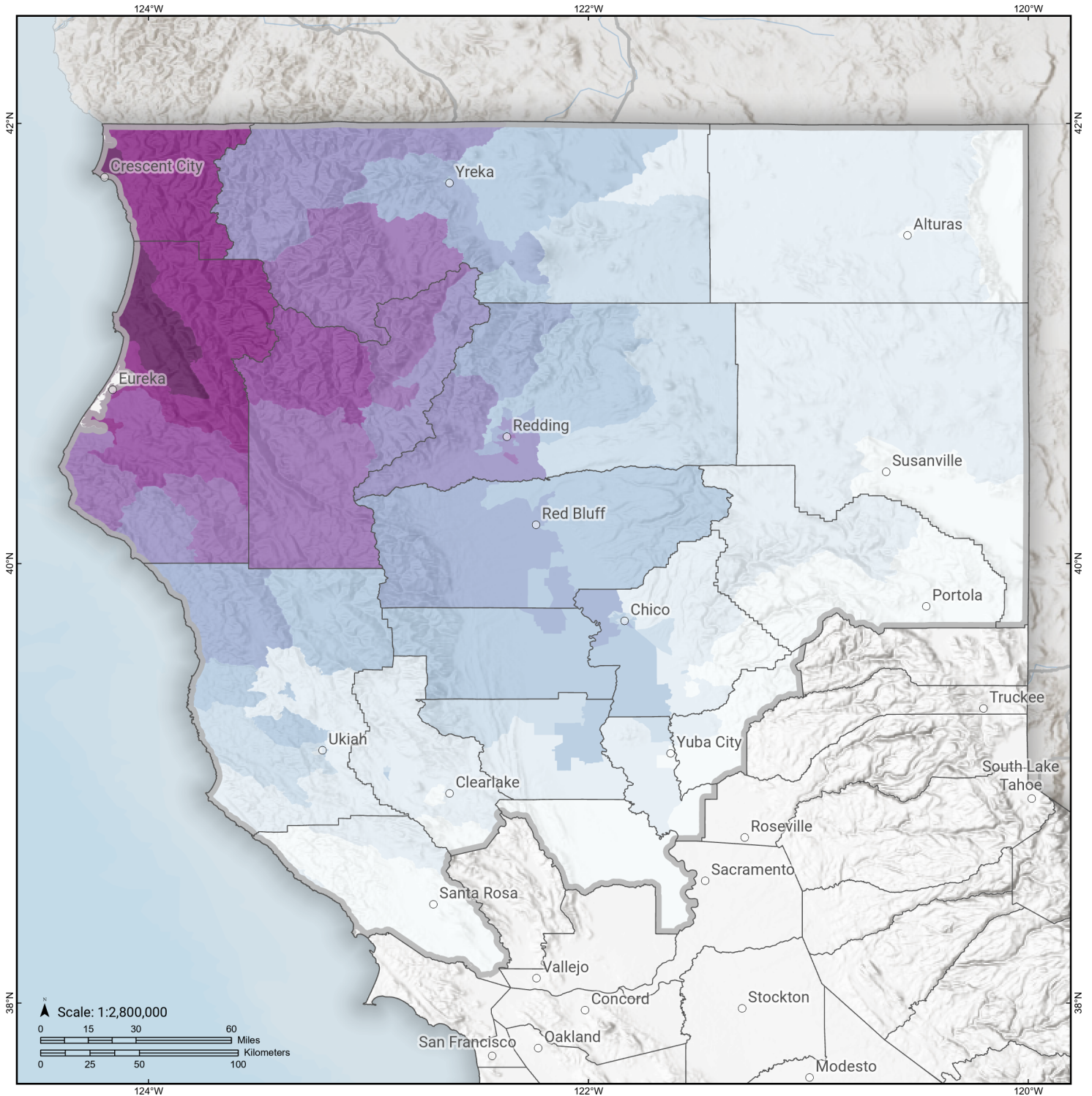


Loss Ratio (ratio of building related economic loss to exposed value of buildings)



Big Lagoon - Bald Mtn

Total Building Related Economic Loss by Census Tract



Study Region: Big Lagoon - Bald Mtn
Scenario: biglagoonbaldmtn2011_m7p87_se



Economic Loss (in thousands of USD \$)

0	>500 - 1,500
>0 - 10	>1,500 - 5,000
>10 - 30	>5,000 - 20,000
>30 - 125	>20,000 - 75,000
>125 - 500	>75,000 - 272,100

Building Damage by Count by General Occupancy

May 01, 2024

	# of Buildings					Total
	None	Slight	Moderate	Extensive	Complete	
California						
Butte						
<i>Agriculture</i>	510	0	0	0	0	510
<i>Commercial</i>	6,382	3	0	0	0	6,385
<i>Education</i>	172	0	0	0	0	172
<i>Government</i>	147	0	0	0	0	147
<i>Industrial</i>	1,521	1	0	0	0	1,522
<i>Religion</i>	531	0	0	0	0	531
<i>Other Residential</i>	21,489	8	0	0	0	21,498
<i>Single Family</i>	50,283	0	0	0	0	50,283
Colusa						
<i>Agriculture</i>	142	0	0	0	0	142
<i>Commercial</i>	794	0	0	0	0	794
<i>Education</i>	33	0	0	0	0	33
<i>Government</i>	32	0	0	0	0	32
<i>Industrial</i>	113	0	0	0	0	113
<i>Religion</i>	58	0	0	0	0	58
<i>Other Residential</i>	954	0	0	0	0	954
<i>Single Family</i>	5,954	0	0	0	0	5,954
Del Norte						

	# of Buildings					Total
	None	Slight	Moderate	Extensive	Complete	
<i>Agriculture</i>	60	32	30	11	1	134
<i>Commercial</i>	128	140	298	149	14	729
<i>Education</i>	7	9	12	3	0	31
<i>Government</i>	1	3	9	5	0	18
<i>Industrial</i>	7	12	27	14	2	61
<i>Religion</i>	9	8	21	14	1	53
<i>Other Residential</i>	301	497	1,212	1,418	432	3,861
<i>Single Family</i>	1,143	1,976	2,682	302	14	6,117
Glenn						
<i>Agriculture</i>	1,361	4	0	0	0	1,365
<i>Commercial</i>	883	2	0	0	0	885
<i>Education</i>	35	0	0	0	0	35
<i>Government</i>	99	0	0	0	0	99
<i>Industrial</i>	254	0	0	0	0	254
<i>Religion</i>	89	0	0	0	0	89
<i>Other Residential</i>	2,139	13	1	0	0	2,152
<i>Single Family</i>	7,414	3	0	0	0	7,417
Humboldt						
<i>Agriculture</i>	102	31	15	2	0	150
<i>Commercial</i>	1,598	815	480	179	47	3,118
<i>Education</i>	92	25	9	1	0	127
<i>Government</i>	51	20	10	5	1	87
<i>Industrial</i>	246	197	199	77	21	740
<i>Religion</i>	29	17	12	3	0	61
<i>Other Residential</i>	5,811	3,347	1,816	945	139	12,058

		# of Buildings					
		None	Slight	Moderate	Extensive	Complete	Total
Lake	<i>Single Family</i>	25,589	11,082	1,621	65	2	38,359
	<i>Agriculture</i>	161	0	0	0	0	161
	<i>Commercial</i>	2,091	0	0	0	0	2,091
	<i>Education</i>	68	0	0	0	0	68
	<i>Government</i>	78	0	0	0	0	78
	<i>Industrial</i>	354	0	0	0	0	354
	<i>Religion</i>	140	0	0	0	0	140
	<i>Other Residential</i>	14,600	1	0	0	0	14,601
	<i>Single Family</i>	21,633	0	0	0	0	21,633
Lassen	<i>Agriculture</i>	37	0	0	0	0	37
	<i>Commercial</i>	913	0	0	0	0	913
	<i>Education</i>	40	0	0	0	0	40
	<i>Government</i>	22	0	0	0	0	22
	<i>Industrial</i>	140	0	0	0	0	140
	<i>Religion</i>	71	0	0	0	0	71
	<i>Other Residential</i>	2,627	0	0	0	0	2,627
	<i>Single Family</i>	9,562	0	0	0	0	9,562
	Mendocino	<i>Agriculture</i>	184	0	0	0	0
<i>Commercial</i>		3,435	1	0	0	0	3,436
<i>Education</i>		101	0	0	0	0	101
<i>Government</i>		83	0	0	0	0	83
<i>Industrial</i>		869	0	0	0	0	869

	# of Buildings					Total
	None	Slight	Moderate	Extensive	Complete	
<i>Religion</i>	216	0	0	0	0	216
<i>Other Residential</i>	7,051	9	0	0	0	7,060
<i>Single Family</i>	25,968	1	0	0	0	25,969
Modoc						
<i>Agriculture</i>	449	0	0	0	0	449
<i>Commercial</i>	532	0	0	0	0	532
<i>Education</i>	20	0	0	0	0	20
<i>Government</i>	16	0	0	0	0	16
<i>Industrial</i>	76	0	0	0	0	76
<i>Religion</i>	36	0	0	0	0	36
<i>Other Residential</i>	1,994	0	0	0	0	1,994
<i>Single Family</i>	3,740	0	0	0	0	3,740
Plumas						
<i>Agriculture</i>	84	0	0	0	0	84
<i>Commercial</i>	1,215	0	0	0	0	1,215
<i>Education</i>	26	0	0	0	0	26
<i>Government</i>	45	0	0	0	0	45
<i>Industrial</i>	184	0	0	0	0	184
<i>Religion</i>	30	0	0	0	0	30
<i>Other Residential</i>	5,032	0	0	0	0	5,032
<i>Single Family</i>	9,877	0	0	0	0	9,877
Shasta						
<i>Agriculture</i>	3,220	13	2	0	0	3,235
<i>Commercial</i>	5,225	28	2	0	0	5,254
<i>Education</i>	136	0	0	0	0	136

	# of Buildings					Total
	None	Slight	Moderate	Extensive	Complete	
<i>Government</i>	87	0	0	0	0	87
<i>Industrial</i>	1,030	7	1	0	0	1,038
<i>Religion</i>	66	0	0	0	0	66
<i>Other Residential</i>	16,668	263	17	0	0	16,949
<i>Single Family</i>	51,687	128	0	0	0	51,815
Siskiyou						
<i>Agriculture</i>	200	1	0	0	0	201
<i>Commercial</i>	1,587	4	0	0	0	1,591
<i>Education</i>	76	0	0	0	0	76
<i>Government</i>	243	1	0	0	0	244
<i>Industrial</i>	479	1	0	0	0	480
<i>Religion</i>	127	0	0	0	0	127
<i>Other Residential</i>	5,030	61	4	0	0	5,095
<i>Single Family</i>	17,770	24	0	0	0	17,794
Sonoma						
<i>Agriculture</i>	1,304	0	0	0	0	1,304
<i>Commercial</i>	12,110	0	0	0	0	12,110
<i>Education</i>	367	0	0	0	0	367
<i>Government</i>	319	0	0	0	0	319
<i>Industrial</i>	3,825	0	0	0	0	3,825
<i>Religion</i>	576	0	0	0	0	576
<i>Other Residential</i>	25,033	0	0	0	0	25,033
<i>Single Family</i>	142,028	0	0	0	0	142,028
Sutter						
<i>Agriculture</i>	1,125	0	0	0	0	1,125

	# of Buildings					Total
	None	Slight	Moderate	Extensive	Complete	
<i>Commercial</i>	2,052	0	0	0	0	2,052
<i>Education</i>	62	0	0	0	0	62
<i>Government</i>	77	0	0	0	0	77
<i>Industrial</i>	636	0	0	0	0	636
<i>Religion</i>	154	0	0	0	0	154
<i>Other Residential</i>	3,113	0	0	0	0	3,113
<i>Single Family</i>	24,512	0	0	0	0	24,512
Tehama						
<i>Agriculture</i>	299	0	0	0	0	299
<i>Commercial</i>	1,267	3	0	0	0	1,270
<i>Education</i>	57	0	0	0	0	57
<i>Government</i>	50	0	0	0	0	50
<i>Industrial</i>	551	1	0	0	0	552
<i>Religion</i>	110	0	0	0	0	110
<i>Other Residential</i>	3,967	23	1	0	0	3,991
<i>Single Family</i>	21,206	16	0	0	0	21,222
Trinity						
<i>Agriculture</i>	4	0	0	0	0	4
<i>Commercial</i>	972	28	5	0	0	1,005
<i>Education</i>	26	0	0	0	0	26
<i>Government</i>	8	0	0	0	0	8
<i>Industrial</i>	55	2	1	0	0	58
<i>Religion</i>	44	1	0	0	0	45
<i>Other Residential</i>	1,130	161	61	2	0	1,354

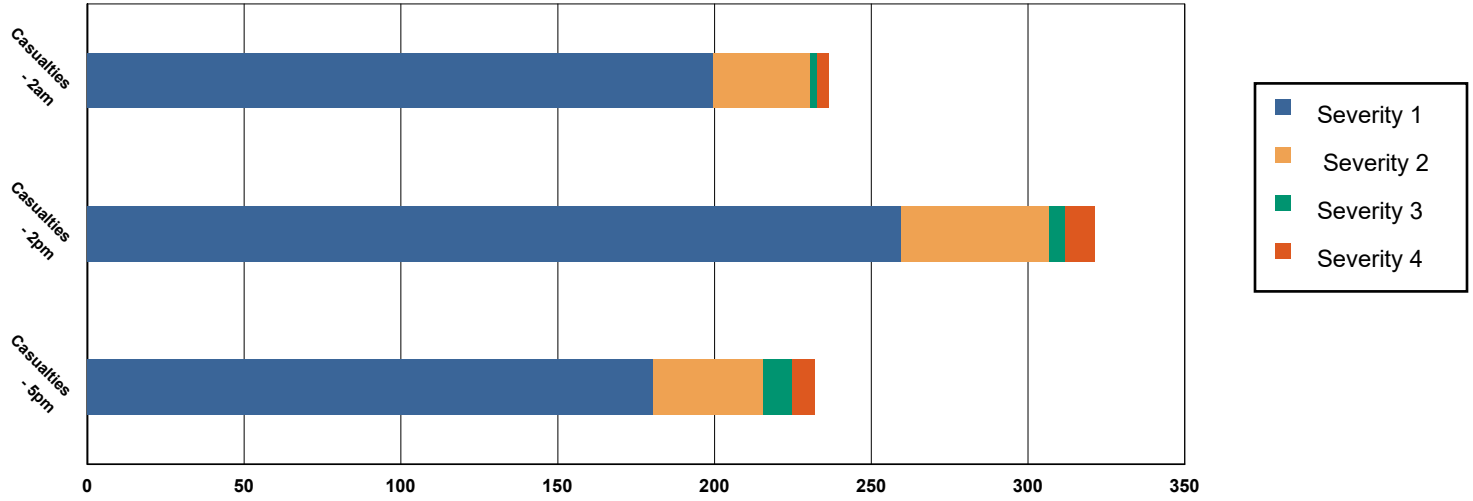
		# of Buildings					
		None	Slight	Moderate	Extensive	Complete	Total
Yolo	<i>Single Family</i>	6,120	171	3	0	0	6,294
	<i>Agriculture</i>	281	0	0	0	0	281
	<i>Commercial</i>	4,225	0	0	0	0	4,225
	<i>Education</i>	131	0	0	0	0	131
	<i>Government</i>	111	0	0	0	0	111
	<i>Industrial</i>	1,117	0	0	0	0	1,117
	<i>Religion</i>	242	0	0	0	0	242
	<i>Other Residential</i>	9,861	0	0	0	0	9,861
Yuba	<i>Single Family</i>	42,589	0	0	0	0	42,589
	<i>Agriculture</i>	92	0	0	0	0	92
	<i>Commercial</i>	1,199	0	0	0	0	1,199
	<i>Education</i>	54	0	0	0	0	54
	<i>Government</i>	591	0	0	0	0	591
	<i>Industrial</i>	404	0	0	0	0	404
	<i>Religion</i>	98	0	0	0	0	98
	<i>Other Residential</i>	7,021	0	0	0	0	7,021
	<i>Single Family</i>	18,867	0	0	0	0	18,867
Total	694,028	19,200	8,552	3,194	676	725,649	
Region Total	694,028	19,200	8,552	3,194	676	725,649	

Totals only reflect data for those census tracts/blocks included in the user's study region and will reflect the entire county/state only if all of the census blocks for that county/states were selected at the time of study region creation.

Casualties Summary Report

May 01, 2024

Region Total Casualties



Injury Severity Level

Severity 1	Severity 2	Severity 3	Severity 4	Total
------------	------------	------------	------------	-------

California

Butte

Casualties - 2am

	Severity 1	Severity 2	Severity 3	Severity 4	Total
Commuting	0	0	0	0	0
Commercial	0	0	0	0	0
Educational	0	0	0	0	0
Hotels	0	0	0	0	0
Industrial	0	0	0	0	0
Other-Residential	0	0	0	0	0
Single Family	0	0	0	0	0

Total Casualties - 2am

0	0	0	0	0
---	---	---	---	---

Casualties - 2pm

	Severity 1	Severity 2	Severity 3	Severity 4	Total
Commuting	0	0	0	0	0
Commercial	0	0	0	0	0
Educational	0	0	0	0	0
Hotels	0	0	0	0	0
Industrial	0	0	0	0	0
Other-Residential	0	0	0	0	0
Single Family	0	0	0	0	0

	Injury Severity Level				Total
	Severity 1	Severity 2	Severity 3	Severity 4	
California					
Butte					
Total Casualties - 2pm	0	0	0	0	0
Casualties - 5pm					
<i>Commuting</i>	0	0	0	0	0
<i>Commercial</i>	0	0	0	0	0
<i>Educational</i>	0	0	0	0	0
<i>Hotels</i>	0	0	0	0	0
<i>Industrial</i>	0	0	0	0	0
<i>Other-Residential</i>	0	0	0	0	0
<i>Single Family</i>	0	0	0	0	0
Total Casualties - 5pm	0	0	0	0	0
Colusa					
Casualties - 2am					
<i>Commuting</i>	0	0	0	0	0
<i>Commercial</i>	0	0	0	0	0
<i>Educational</i>	0	0	0	0	0
<i>Hotels</i>	0	0	0	0	0
<i>Industrial</i>	0	0	0	0	0
<i>Other-Residential</i>	0	0	0	0	0
<i>Single Family</i>	0	0	0	0	0
Total Casualties - 2am	0	0	0	0	0
Casualties - 2pm					
<i>Commuting</i>	0	0	0	0	0
<i>Commercial</i>	0	0	0	0	0
<i>Educational</i>	0	0	0	0	0
<i>Hotels</i>	0	0	0	0	0
<i>Industrial</i>	0	0	0	0	0
<i>Other-Residential</i>	0	0	0	0	0
<i>Single Family</i>	0	0	0	0	0
Total Casualties - 2pm	0	0	0	0	0
Casualties - 5pm					
<i>Commuting</i>	0	0	0	0	0
<i>Commercial</i>	0	0	0	0	0
<i>Educational</i>	0	0	0	0	0
<i>Hotels</i>	0	0	0	0	0
<i>Industrial</i>	0	0	0	0	0
<i>Other-Residential</i>	0	0	0	0	0
<i>Single Family</i>	0	0	0	0	0
Total Casualties - 5pm	0	0	0	0	0
Del Norte					
Casualties - 2am					
<i>Commuting</i>	0	0	0	0	0

Injury Severity Level

Severity 1 Severity 2 Severity 3 Severity 4 Total

California

Del Norte

Casualties - 2am

<i>Commercial</i>	1	0	0	0	1
<i>Educational</i>	0	0	0	0	0
<i>Hotels</i>	0	0	0	0	0
<i>Industrial</i>	0	0	0	0	0
<i>Other-Residential</i>	76	14	1	1	93
<i>Single Family</i>	30	3	0	0	33
Total Casualties - 2am	106	18	1	2	127

Casualties - 2pm

<i>Commuting</i>	0	0	0	0	0
<i>Commercial</i>	65	11	1	2	79
<i>Educational</i>	19	4	0	1	24
<i>Hotels</i>	0	0	0	0	0
<i>Industrial</i>	1	0	0	0	2
<i>Other-Residential</i>	27	5	0	1	33
<i>Single Family</i>	10	1	0	0	11
Total Casualties - 2pm	123	21	2	3	149

Casualties - 5pm

<i>Commuting</i>	1	1	1	0	3
<i>Commercial</i>	44	8	1	1	54
<i>Educational</i>	0	0	0	0	0
<i>Hotels</i>	0	0	0	0	0
<i>Industrial</i>	1	0	0	0	1
<i>Other-Residential</i>	28	5	0	1	34
<i>Single Family</i>	11	1	0	0	13
Total Casualties - 5pm	85	15	3	2	105

Glenn

Casualties - 2am

<i>Commuting</i>	0	0	0	0	0
<i>Commercial</i>	0	0	0	0	0
<i>Educational</i>	0	0	0	0	0
<i>Hotels</i>	0	0	0	0	0
<i>Industrial</i>	0	0	0	0	0
<i>Other-Residential</i>	0	0	0	0	0
<i>Single Family</i>	0	0	0	0	0
Total Casualties - 2am	0	0	0	0	0

Casualties - 2pm

<i>Commuting</i>	0	0	0	0	0
<i>Commercial</i>	0	0	0	0	0
<i>Educational</i>	0	0	0	0	0
<i>Hotels</i>	0	0	0	0	0
<i>Industrial</i>	0	0	0	0	0

	Injury Severity Level				Total
	Severity 1	Severity 2	Severity 3	Severity 4	
California					
Glenn					
Casualties - 2pm					
Other-Residential	0	0	0	0	0
Single Family	0	0	0	0	0
Total Casualties - 2pm	0	0	0	0	0
Casualties - 5pm					
Commuting	0	0	0	0	0
Commercial	0	0	0	0	0
Educational	0	0	0	0	0
Hotels	0	0	0	0	0
Industrial	0	0	0	0	0
Other-Residential	0	0	0	0	0
Single Family	0	0	0	0	0
Total Casualties - 5pm	0	0	0	0	0
Humboldt					
Casualties - 2am					
Commuting	0	0	0	0	0
Commercial	1	0	0	0	1
Educational	0	0	0	0	0
Hotels	0	0	0	0	0
Industrial	1	0	0	0	2
Other-Residential	64	11	1	2	79
Single Family	25	1	0	0	27
Total Casualties - 2am	92	13	1	2	108
Casualties - 2pm					
Commuting	0	0	0	0	1
Commercial	68	15	2	4	90
Educational	27	4	0	1	32
Hotels	0	0	0	0	0
Industrial	9	2	0	0	11
Other-Residential	23	4	0	1	28
Single Family	9	1	0	0	9
Total Casualties - 2pm	136	26	3	6	171
Casualties - 5pm					
Commuting	2	3	4	1	10
Commercial	47	10	1	3	61
Educational	8	1	0	0	9
Hotels	0	0	0	0	0
Industrial	5	1	0	0	7
Other-Residential	24	4	0	1	29
Single Family	9	1	0	0	10
Total Casualties - 5pm	95	20	6	5	126

	Injury Severity Level				Total
	Severity 1	Severity 2	Severity 3	Severity 4	
California					
Lake					
Casualties - 2am					
<i>Commuting</i>	0	0	0	0	0
<i>Commercial</i>	0	0	0	0	0
<i>Educational</i>	0	0	0	0	0
<i>Hotels</i>	0	0	0	0	0
<i>Industrial</i>	0	0	0	0	0
<i>Other-Residential</i>	0	0	0	0	0
<i>Single Family</i>	0	0	0	0	0
Total Casualties - 2am	0	0	0	0	0
Casualties - 2pm					
<i>Commuting</i>	0	0	0	0	0
<i>Commercial</i>	0	0	0	0	0
<i>Educational</i>	0	0	0	0	0
<i>Hotels</i>	0	0	0	0	0
<i>Industrial</i>	0	0	0	0	0
<i>Other-Residential</i>	0	0	0	0	0
<i>Single Family</i>	0	0	0	0	0
Total Casualties - 2pm	0	0	0	0	0
Casualties - 5pm					
<i>Commuting</i>	0	0	0	0	0
<i>Commercial</i>	0	0	0	0	0
<i>Educational</i>	0	0	0	0	0
<i>Hotels</i>	0	0	0	0	0
<i>Industrial</i>	0	0	0	0	0
<i>Other-Residential</i>	0	0	0	0	0
<i>Single Family</i>	0	0	0	0	0
Total Casualties - 5pm	0	0	0	0	0
Lassen					
Casualties - 2am					
<i>Commuting</i>	0	0	0	0	0
<i>Commercial</i>	0	0	0	0	0
<i>Educational</i>	0	0	0	0	0
<i>Hotels</i>	0	0	0	0	0
<i>Industrial</i>	0	0	0	0	0
<i>Other-Residential</i>	0	0	0	0	0
<i>Single Family</i>	0	0	0	0	0
Total Casualties - 2am	0	0	0	0	0
Casualties - 2pm					
<i>Commuting</i>	0	0	0	0	0
<i>Commercial</i>	0	0	0	0	0
<i>Educational</i>	0	0	0	0	0
<i>Hotels</i>	0	0	0	0	0

	Injury Severity Level				Total
	Severity 1	Severity 2	Severity 3	Severity 4	
California					
Lassen					
Casualties - 2pm					
<i>Industrial</i>	0	0	0	0	0
<i>Other-Residential</i>	0	0	0	0	0
<i>Single Family</i>	0	0	0	0	0
Total Casualties - 2pm	0	0	0	0	0
Casualties - 5pm					
<i>Commuting</i>	0	0	0	0	0
<i>Commercial</i>	0	0	0	0	0
<i>Educational</i>	0	0	0	0	0
<i>Hotels</i>	0	0	0	0	0
<i>Industrial</i>	0	0	0	0	0
<i>Other-Residential</i>	0	0	0	0	0
<i>Single Family</i>	0	0	0	0	0
Total Casualties - 5pm	0	0	0	0	0
Mendocino					
Casualties - 2am					
<i>Commuting</i>	0	0	0	0	0
<i>Commercial</i>	0	0	0	0	0
<i>Educational</i>	0	0	0	0	0
<i>Hotels</i>	0	0	0	0	0
<i>Industrial</i>	0	0	0	0	0
<i>Other-Residential</i>	0	0	0	0	0
<i>Single Family</i>	0	0	0	0	0
Total Casualties - 2am	0	0	0	0	0
Casualties - 2pm					
<i>Commuting</i>	0	0	0	0	0
<i>Commercial</i>	0	0	0	0	0
<i>Educational</i>	0	0	0	0	0
<i>Hotels</i>	0	0	0	0	0
<i>Industrial</i>	0	0	0	0	0
<i>Other-Residential</i>	0	0	0	0	0
<i>Single Family</i>	0	0	0	0	0
Total Casualties - 2pm	0	0	0	0	0
Casualties - 5pm					
<i>Commuting</i>	0	0	0	0	0
<i>Commercial</i>	0	0	0	0	0
<i>Educational</i>	0	0	0	0	0
<i>Hotels</i>	0	0	0	0	0
<i>Industrial</i>	0	0	0	0	0
<i>Other-Residential</i>	0	0	0	0	0
<i>Single Family</i>	0	0	0	0	0

	Injury Severity Level				Total
	Severity 1	Severity 2	Severity 3	Severity 4	
California					
Mendocino					
Total Casualties - 5pm	0	0	0	0	0
Modoc					
Casualties - 2am					
<i>Commuting</i>	0	0	0	0	0
<i>Commercial</i>	0	0	0	0	0
<i>Educational</i>	0	0	0	0	0
<i>Hotels</i>	0	0	0	0	0
<i>Industrial</i>	0	0	0	0	0
<i>Other-Residential</i>	0	0	0	0	0
<i>Single Family</i>	0	0	0	0	0
Total Casualties - 2am	0	0	0	0	0
Casualties - 2pm					
<i>Commuting</i>	0	0	0	0	0
<i>Commercial</i>	0	0	0	0	0
<i>Educational</i>	0	0	0	0	0
<i>Hotels</i>	0	0	0	0	0
<i>Industrial</i>	0	0	0	0	0
<i>Other-Residential</i>	0	0	0	0	0
<i>Single Family</i>	0	0	0	0	0
Total Casualties - 2pm	0	0	0	0	0
Casualties - 5pm					
<i>Commuting</i>	0	0	0	0	0
<i>Commercial</i>	0	0	0	0	0
<i>Educational</i>	0	0	0	0	0
<i>Hotels</i>	0	0	0	0	0
<i>Industrial</i>	0	0	0	0	0
<i>Other-Residential</i>	0	0	0	0	0
<i>Single Family</i>	0	0	0	0	0
Total Casualties - 5pm	0	0	0	0	0
Plumas					
Casualties - 2am					
<i>Commuting</i>	0	0	0	0	0
<i>Commercial</i>	0	0	0	0	0
<i>Educational</i>	0	0	0	0	0
<i>Hotels</i>	0	0	0	0	0
<i>Industrial</i>	0	0	0	0	0
<i>Other-Residential</i>	0	0	0	0	0
<i>Single Family</i>	0	0	0	0	0
Total Casualties - 2am	0	0	0	0	0
Casualties - 2pm					
<i>Commuting</i>	0	0	0	0	0

	Injury Severity Level				Total
	Severity 1	Severity 2	Severity 3	Severity 4	
California					
Plumas					
Casualties - 2pm					
<i>Commercial</i>	0	0	0	0	0
<i>Educational</i>	0	0	0	0	0
<i>Hotels</i>	0	0	0	0	0
<i>Industrial</i>	0	0	0	0	0
<i>Other-Residential</i>	0	0	0	0	0
<i>Single Family</i>	0	0	0	0	0
Total Casualties - 2pm	0	0	0	0	0
Casualties - 5pm					
<i>Commuting</i>	0	0	0	0	0
<i>Commercial</i>	0	0	0	0	0
<i>Educational</i>	0	0	0	0	0
<i>Hotels</i>	0	0	0	0	0
<i>Industrial</i>	0	0	0	0	0
<i>Other-Residential</i>	0	0	0	0	0
<i>Single Family</i>	0	0	0	0	0
Total Casualties - 5pm	0	0	0	0	0
Shasta					
Casualties - 2am					
<i>Commuting</i>	0	0	0	0	0
<i>Commercial</i>	0	0	0	0	0
<i>Educational</i>	0	0	0	0	0
<i>Hotels</i>	0	0	0	0	0
<i>Industrial</i>	0	0	0	0	0
<i>Other-Residential</i>	0	0	0	0	0
<i>Single Family</i>	0	0	0	0	0
Total Casualties - 2am	1	0	0	0	1
Casualties - 2pm					
<i>Commuting</i>	0	0	0	0	0
<i>Commercial</i>	0	0	0	0	0
<i>Educational</i>	0	0	0	0	0
<i>Hotels</i>	0	0	0	0	0
<i>Industrial</i>	0	0	0	0	0
<i>Other-Residential</i>	0	0	0	0	0
<i>Single Family</i>	0	0	0	0	0
Total Casualties - 2pm	0	0	0	0	0
Casualties - 5pm					
<i>Commuting</i>	0	0	0	0	0
<i>Commercial</i>	0	0	0	0	0
<i>Educational</i>	0	0	0	0	0
<i>Hotels</i>	0	0	0	0	0
<i>Industrial</i>	0	0	0	0	0

	Injury Severity Level				Total
	Severity 1	Severity 2	Severity 3	Severity 4	
California					
Shasta					
Casualties - 5pm					
<i>Other-Residential</i>	0	0	0	0	0
<i>Single Family</i>	0	0	0	0	0
Total Casualties - 5pm	0	0	0	0	0
Siskiyou					
Casualties - 2am					
<i>Commuting</i>	0	0	0	0	0
<i>Commercial</i>	0	0	0	0	0
<i>Educational</i>	0	0	0	0	0
<i>Hotels</i>	0	0	0	0	0
<i>Industrial</i>	0	0	0	0	0
<i>Other-Residential</i>	0	0	0	0	0
<i>Single Family</i>	0	0	0	0	0
Total Casualties - 2am	0	0	0	0	0
Casualties - 2pm					
<i>Commuting</i>	0	0	0	0	0
<i>Commercial</i>	0	0	0	0	0
<i>Educational</i>	0	0	0	0	0
<i>Hotels</i>	0	0	0	0	0
<i>Industrial</i>	0	0	0	0	0
<i>Other-Residential</i>	0	0	0	0	0
<i>Single Family</i>	0	0	0	0	0
Total Casualties - 2pm	0	0	0	0	0
Casualties - 5pm					
<i>Commuting</i>	0	0	0	0	0
<i>Commercial</i>	0	0	0	0	0
<i>Educational</i>	0	0	0	0	0
<i>Hotels</i>	0	0	0	0	0
<i>Industrial</i>	0	0	0	0	0
<i>Other-Residential</i>	0	0	0	0	0
<i>Single Family</i>	0	0	0	0	0
Total Casualties - 5pm	0	0	0	0	0
Sonoma					
Casualties - 2am					
<i>Commuting</i>	0	0	0	0	0
<i>Commercial</i>	0	0	0	0	0
<i>Educational</i>	0	0	0	0	0
<i>Hotels</i>	0	0	0	0	0
<i>Industrial</i>	0	0	0	0	0
<i>Other-Residential</i>	0	0	0	0	0
<i>Single Family</i>	0	0	0	0	0

	Injury Severity Level				Total
	Severity 1	Severity 2	Severity 3	Severity 4	
California					
Sonoma					
Total Casualties - 2am	0	0	0	0	0
Casualties - 2pm					
<i>Commuting</i>	0	0	0	0	0
<i>Commercial</i>	0	0	0	0	0
<i>Educational</i>	0	0	0	0	0
<i>Hotels</i>	0	0	0	0	0
<i>Industrial</i>	0	0	0	0	0
<i>Other-Residential</i>	0	0	0	0	0
<i>Single Family</i>	0	0	0	0	0
Total Casualties - 2pm	0	0	0	0	0
Casualties - 5pm					
<i>Commuting</i>	0	0	0	0	0
<i>Commercial</i>	0	0	0	0	0
<i>Educational</i>	0	0	0	0	0
<i>Hotels</i>	0	0	0	0	0
<i>Industrial</i>	0	0	0	0	0
<i>Other-Residential</i>	0	0	0	0	0
<i>Single Family</i>	0	0	0	0	0
Total Casualties - 5pm	0	0	0	0	0
Sutter					
Casualties - 2am					
<i>Commuting</i>	0	0	0	0	0
<i>Commercial</i>	0	0	0	0	0
<i>Educational</i>	0	0	0	0	0
<i>Hotels</i>	0	0	0	0	0
<i>Industrial</i>	0	0	0	0	0
<i>Other-Residential</i>	0	0	0	0	0
<i>Single Family</i>	0	0	0	0	0
Total Casualties - 2am	0	0	0	0	0
Casualties - 2pm					
<i>Commuting</i>	0	0	0	0	0
<i>Commercial</i>	0	0	0	0	0
<i>Educational</i>	0	0	0	0	0
<i>Hotels</i>	0	0	0	0	0
<i>Industrial</i>	0	0	0	0	0
<i>Other-Residential</i>	0	0	0	0	0
<i>Single Family</i>	0	0	0	0	0
Total Casualties - 2pm	0	0	0	0	0
Casualties - 5pm					
<i>Commuting</i>	0	0	0	0	0
<i>Commercial</i>	0	0	0	0	0

	Injury Severity Level				Total
	Severity 1	Severity 2	Severity 3	Severity 4	
California					
Sutter					
Casualties - 5pm					
<i>Educational</i>	0	0	0	0	0
<i>Hotels</i>	0	0	0	0	0
<i>Industrial</i>	0	0	0	0	0
<i>Other-Residential</i>	0	0	0	0	0
<i>Single Family</i>	0	0	0	0	0
Total Casualties - 5pm	0	0	0	0	0
Tehama					
Casualties - 2am					
<i>Commuting</i>	0	0	0	0	0
<i>Commercial</i>	0	0	0	0	0
<i>Educational</i>	0	0	0	0	0
<i>Hotels</i>	0	0	0	0	0
<i>Industrial</i>	0	0	0	0	0
<i>Other-Residential</i>	0	0	0	0	0
<i>Single Family</i>	0	0	0	0	0
Total Casualties - 2am	0	0	0	0	0
Casualties - 2pm					
<i>Commuting</i>	0	0	0	0	0
<i>Commercial</i>	0	0	0	0	0
<i>Educational</i>	0	0	0	0	0
<i>Hotels</i>	0	0	0	0	0
<i>Industrial</i>	0	0	0	0	0
<i>Other-Residential</i>	0	0	0	0	0
<i>Single Family</i>	0	0	0	0	0
Total Casualties - 2pm	0	0	0	0	0
Casualties - 5pm					
<i>Commuting</i>	0	0	0	0	0
<i>Commercial</i>	0	0	0	0	0
<i>Educational</i>	0	0	0	0	0
<i>Hotels</i>	0	0	0	0	0
<i>Industrial</i>	0	0	0	0	0
<i>Other-Residential</i>	0	0	0	0	0
<i>Single Family</i>	0	0	0	0	0
Total Casualties - 5pm	0	0	0	0	0
Trinity					
Casualties - 2am					
<i>Commuting</i>	0	0	0	0	0
<i>Commercial</i>	0	0	0	0	0
<i>Educational</i>	0	0	0	0	0
<i>Hotels</i>	0	0	0	0	0
<i>Industrial</i>	0	0	0	0	0

	Injury Severity Level				Total
	Severity 1	Severity 2	Severity 3	Severity 4	
California					
Trinity					
Casualties - 2am					
<i>Other-Residential</i>	0	0	0	0	0
<i>Single Family</i>	0	0	0	0	0
Total Casualties - 2am	1	0	0	0	1
Casualties - 2pm					
<i>Commuting</i>	0	0	0	0	0
<i>Commercial</i>	0	0	0	0	0
<i>Educational</i>	0	0	0	0	0
<i>Hotels</i>	0	0	0	0	0
<i>Industrial</i>	0	0	0	0	0
<i>Other-Residential</i>	0	0	0	0	0
<i>Single Family</i>	0	0	0	0	0
Total Casualties - 2pm	0	0	0	0	0
Casualties - 5pm					
<i>Commuting</i>	0	0	0	0	0
<i>Commercial</i>	0	0	0	0	0
<i>Educational</i>	0	0	0	0	0
<i>Hotels</i>	0	0	0	0	0
<i>Industrial</i>	0	0	0	0	0
<i>Other-Residential</i>	0	0	0	0	0
<i>Single Family</i>	0	0	0	0	0
Total Casualties - 5pm	0	0	0	0	0
Yolo					
Casualties - 2am					
<i>Commuting</i>	0	0	0	0	0
<i>Commercial</i>	0	0	0	0	0
<i>Educational</i>	0	0	0	0	0
<i>Hotels</i>	0	0	0	0	0
<i>Industrial</i>	0	0	0	0	0
<i>Other-Residential</i>	0	0	0	0	0
<i>Single Family</i>	0	0	0	0	0
Total Casualties - 2am	0	0	0	0	0
Casualties - 2pm					
<i>Commuting</i>	0	0	0	0	0
<i>Commercial</i>	0	0	0	0	0
<i>Educational</i>	0	0	0	0	0
<i>Hotels</i>	0	0	0	0	0
<i>Industrial</i>	0	0	0	0	0
<i>Other-Residential</i>	0	0	0	0	0
<i>Single Family</i>	0	0	0	0	0
Total Casualties - 2pm	0	0	0	0	0

	Injury Severity Level				Total
	Severity 1	Severity 2	Severity 3	Severity 4	
California					
Yolo					
Casualties - 5pm					
<i>Commuting</i>	0	0	0	0	0
<i>Commercial</i>	0	0	0	0	0
<i>Educational</i>	0	0	0	0	0
<i>Hotels</i>	0	0	0	0	0
<i>Industrial</i>	0	0	0	0	0
<i>Other-Residential</i>	0	0	0	0	0
<i>Single Family</i>	0	0	0	0	0
Total Casualties - 5pm	0	0	0	0	0
Yuba					
Casualties - 2am					
<i>Commuting</i>	0	0	0	0	0
<i>Commercial</i>	0	0	0	0	0
<i>Educational</i>	0	0	0	0	0
<i>Hotels</i>	0	0	0	0	0
<i>Industrial</i>	0	0	0	0	0
<i>Other-Residential</i>	0	0	0	0	0
<i>Single Family</i>	0	0	0	0	0
Total Casualties - 2am	0	0	0	0	0
Casualties - 2pm					
<i>Commuting</i>	0	0	0	0	0
<i>Commercial</i>	0	0	0	0	0
<i>Educational</i>	0	0	0	0	0
<i>Hotels</i>	0	0	0	0	0
<i>Industrial</i>	0	0	0	0	0
<i>Other-Residential</i>	0	0	0	0	0
<i>Single Family</i>	0	0	0	0	0
Total Casualties - 2pm	0	0	0	0	0
Casualties - 5pm					
<i>Commuting</i>	0	0	0	0	0
<i>Commercial</i>	0	0	0	0	0
<i>Educational</i>	0	0	0	0	0
<i>Hotels</i>	0	0	0	0	0
<i>Industrial</i>	0	0	0	0	0
<i>Other-Residential</i>	0	0	0	0	0
<i>Single Family</i>	0	0	0	0	0
Total Casualties - 5pm	0	0	0	0	0
Region Total	NA	NA	NA	NA	NA

Injury Severity Level

Severity 1

Severity 2

Severity 3

Severity 4

Total

Totals only reflect data for those census tracts/blocks included in the user's study region and will reflect the entire county/state only if all of the census blocks for that county/states were selected at the time of study region creation.

Debris Summary Report

May 01, 2024

All values are in thousands of tons.

	Brick, Wood & Others	Concrete & Steel	Total
California			
Butte	0	0	0
Colusa	0	0	0
Del Norte	97	131	228
Glenn	0	0	0
Humboldt	84	182	266
Lake	0	0	0
Lassen	0	0	0
Mendocino	0	0	0
Modoc	0	0	0
Plumas	0	0	0
Shasta	1	0	1
Siskiyou	0	0	0
Sonoma	0	0	0
Sutter	0	0	0
Tehama	0	0	0
Trinity	1	0	1
Yolo	0	0	0
Yuba	0	0	0

	Brick, Wood & Others	Concrete & Steel	Total
Total	183	313	496
Region Total	183	313	496

Totals only reflect data for those census tracts/blocks included in the user's study region and will reflect the entire county/state only if all of the census blocks for that county/states were selected at the time of study region creation.

Direct Economic Losses For Buildings

May 1, 2024

All values are in thousands of dollars

	Capital Stock Losses				Loss Ratio %	Income Losses				Total Loss
	Cost Structural Damage	Cost Non-struct. Damage	Cost Contents Damage	Inventory Loss		Relocation Loss	Capital Related Loss	Wages Losses	Rental Income Loss	
California										
Colusa	4	98	69	12	0.00	1	1	2	1	187
Mendocino	16	631	372	42	0.00	1	2	2	3	1,069
Shasta	897	16,619	9,997	1,512	0.05	122	107	113	152	29,519
Siskiyou	140	2,873	1,702	163	0.03	21	10	17	24	4,950
Trinity	915	7,945	4,365	492	0.24	318	106	74	204	14,418
Tehama	82	1,333	744	111	0.01	11	9	10	15	2,315
Plumas	0	2	2	0	0.00	0	0	0	0	4
Butte	46	1,014	695	90	0.00	6	10	11	12	1,884
Humboldt	177,772	741,498	301,202	25,860	3.28	83,649	37,397	44,532	44,505	1,456,414

	Capital Stock Losses				Loss Ratio %	Income Losses				Total Loss
	Cost Structural Damage	Cost Non-struct. Damage	Cost Contents Damage	Inventory Loss		Relocation Loss	Capital Related Loss	Wages Losses	Rental Income Loss	
Del Norte	173,695	677,289	198,953	4,130	12.37	94,889	22,594	24,217	47,179	1,242,947
Yolo	0	0	0	0	0.00	0	0	0	0	0
Yuba	0	1	0	0	0.00	0	0	0	0	1
Glenn	75	574	357	109	0.01	9	11	10	10	1,155
Lassen	0	1	0	0	0.00	0	0	0	0	1
Sutter	1	26	19	6	0.00	0	0	0	0	53
Sonoma	0	2	1	0	0.00	0	0	0	0	3
Lake	2	55	33	4	0.00	0	0	0	1	95
Modoc	0	2	1	1	0.00	0	0	0	0	4
Total	353,646	1,449,964	518,513	32,532	0.89	179,026	60,247	68,987	92,105	2,755,020
Region Total	353,646	1,449,964	518,513	32,532	0.89	179,026	60,247	68,987	92,105	2,755,020

Totals only reflect data for those census tracts/blocks included in the user's study region and will reflect the entire county/state only if all of the census blocks for that county/states were selected at the time of study region creation.

Direct Economic Loss For Transportation

May 01, 2024

All values are in thousands of dollars

	Highway	Railway	Light Rail	Bus Facility	Ports	Ferries	Airport	Total
California								
Butte								
Segments	0	0	0					0
Bridges	18	0	0					18
Tunnels	0	0	0					0
Facilities		26	0	0	0	0	140	166
Total	18	26	0	0	0	0	140	183
Colusa								
Segments	0	0	0					0
Bridges	14	0	0					14
Tunnels	0	0	0					0
Facilities		0	0	0	0	0	51	51
Total	14	0	0	0	0	0	51	65
Del Norte								
Segments	0	0	0					0
Bridges	10,399	0	0					10,399
Tunnels	56	0	0					56
Facilities		0	0	693	1,953	0	6,684	9,330

	Highway	Railway	Light Rail	Bus Facility	Ports	Ferries	Airport	Total
Total	10,455	0	0	693	1,953	0	6,684	19,786
Glenn								
<i>Segments</i>	0	0	0					0
<i>Bridges</i>	19	0	0					19
<i>Tunnels</i>	0	0	0					0
<i>Facilities</i>		0	0	0	37	0	102	139
Total	19	0	0	0	37	0	102	158
Humboldt								
<i>Segments</i>	0	0	0					0
<i>Bridges</i>	32,597	150	0					32,747
<i>Tunnels</i>	0	0	0					0
<i>Facilities</i>		0	0	848	12,400	0	10,076	23,324
Total	32,597	150	0	848	12,400	0	10,076	56,071
Lake								
<i>Segments</i>	0	0	0					0
<i>Bridges</i>	0	0	0					0
<i>Tunnels</i>	0	0	0					0
<i>Facilities</i>		0	0	0	0	0	102	102
Total	0	0	0	0	0	0	102	102
Lassen								
<i>Segments</i>	0	0	0					0
<i>Bridges</i>	0	0	0					0
<i>Tunnels</i>	0	0	0					0
<i>Facilities</i>		0	0	0	0	0	79	79

	Highway	Railway	Light Rail	Bus Facility	Ports	Ferries	Airport	Total
Total	0	0	0	0	0	0	79	79
Mendocino								
Segments	0	0	0					0
Bridges	4	0	0					4
Tunnels	0	0	0					0
Facilities		0	0	68	37	0	255	360
Total	4	0	0	68	37	0	255	363
Modoc								
Segments	0	0	0					0
Bridges	0	0	0					0
Tunnels	0	0	0					0
Facilities		0	0	0	0	0	79	79
Total	0	0	0	0	0	0	79	79
Plumas								
Segments	0	0	0					0
Bridges	0	0	0					0
Tunnels	0	0	0					0
Facilities		0	0	0	0	0	130	130
Total	0	0	0	0	0	0	130	131
Shasta								
Segments	0	0	0					0
Bridges	47	1	0					48
Tunnels	0	0	0					0
Facilities		109	0	94	0	0	810	1,013

	Highway	Railway	Light Rail	Bus Facility	Ports	Ferries	Airport	Total
Total	47	110	0	94	0	0	810	1,060
Siskiyou								
<i>Segments</i>	0	0	0					0
<i>Bridges</i>	58	0	0					58
<i>Tunnels</i>	0	0	0					0
<i>Facilities</i>		26	0	22	0	0	1,039	1,087
Total	58	26	0	22	0	0	1,039	1,145
Sonoma								
<i>Segments</i>	0	0	0					0
<i>Bridges</i>	2	0	0					2
<i>Tunnels</i>	0	0	0					0
<i>Facilities</i>		0	0	3	29	0	91	122
Total	2	0	0	3	29	0	91	124
Sutter								
<i>Segments</i>	0	0	0					0
<i>Bridges</i>	0	0	0					0
<i>Tunnels</i>	0	0	0					0
<i>Facilities</i>		0	0	0	0	0	14	14
Total	0	0	0	0	0	0	14	15
Tehama								
<i>Segments</i>	0	0	0					0
<i>Bridges</i>	64	0	0					64
<i>Tunnels</i>	0	0	0					0
<i>Facilities</i>		0	0	0	0	0	102	102

	Highway	Railway	Light Rail	Bus Facility	Ports	Ferries	Airport	Total
Total	64	0	0	0	0	0	102	166
Trinity								
Segments	0	0	0					0
Bridges	1,050	0	0					1,050
Tunnels	0	0	0					0
Facilities		0	0	0	0	0	2,018	2,018
Total	1,050	0	0	0	0	0	2,018	3,069
Yolo								
Segments	0	0	0					0
Bridges	5	0	0					5
Tunnels	0	0	0					0
Facilities		14	0	0	69	0	17	101
Total	5	14	0	0	69	0	17	105
Yuba								
Segments	0	0	0					0
Bridges	0	0	0					0
Tunnels	0	0	0					0
Facilities		0	0	2	0	0	11	14
Total	0	0	0	2	0	0	11	14
Total	44,333	326	0	1,730	14,525	0	21,802	82,716
Region Total	44,333	326	0	1,730	14,525	0	21,802	82,716

Totals only reflect data for those census tracts/blocks included in the user's study region and will reflect the entire county/state only if all of the census blocks for that county/states were selected at the time of study region creation.

Direct Economic Loss For Utilities

May 01, 2024

All values are in thousands of dollars

	Potable Water	Waste Water	Oil Systems	Natural Gas	Electric Power	Communication	Total
California							
Butte							
Facilities	28	492	0	0	3,713	2	4,235
Pipelines	84	42	0	0			126
Total	112	534	0	0	3,713	2	4,361
Colusa							
Facilities	0	369	0	75	6,525	0	6,969
Pipelines	35	17	0	0			52
Total	35	386	0	75	6,525	0	7,021
Del Norte							
Facilities	0	76,358	0	0	0	350	76,708
Pipelines	2,634	1,323	0	0			3,957
Total	2,634	77,681	0	0	0	350	80,665
Glenn							
Facilities	0	123	0	0	136	0	259

	Potable Water	Waste Water	Oil Systems	Natural Gas	Electric Power	Communication	Total
<i>Pipelines</i>	79	40	0	0			119
Total	79	163	0	0	136	0	378
Humboldt							
<i>Facilities</i>	0	139,849	0	0	157,940	698	298,487
<i>Pipelines</i>	13,213	6,637	0	0			19,851
Total	13,213	146,487	0	0	157,940	698	318,338
Lake							
<i>Facilities</i>	1	0	0	0	252	1	254
<i>Pipelines</i>	74	37	0	0			111
Total	75	37	0	0	252	1	365
Lassen							
<i>Facilities</i>	0	3	0	0	952	0	954
<i>Pipelines</i>	112	56	0	0			168
Total	112	59	0	0	952	0	1,122
Mendocino							
<i>Facilities</i>	0	2,019	0	0	350	3	2,371
<i>Pipelines</i>	181	91	0	0			272
Total	181	2,110	0	0	350	3	2,643
Modoc							
<i>Facilities</i>	0	3	0	3	0	0	5
<i>Pipelines</i>	105	53	0	0			158

	Potable Water	Waste Water	Oil Systems	Natural Gas	Electric Power	Communication	Total
Total	105	55	0	3	0	0	163
Plumas							
<i>Facilities</i>	1	131	0	0	1,145	0	1,276
<i>Pipelines</i>	99	50	0	0			149
Total	100	181	0	0	1,145	0	1,425
Shasta							
<i>Facilities</i>	376	7,991	0	75	148,436	39	156,917
<i>Pipelines</i>	284	143	0	0			427
Total	660	8,133	0	75	148,436	39	157,344
Siskiyou							
<i>Facilities</i>	0	246	0	0	2,514	1	2,761
<i>Pipelines</i>	536	269	0	0			805
Total	536	515	0	0	2,514	1	3,566
Sonoma							
<i>Facilities</i>	0	149	0	0	2,054	0	2,203
<i>Pipelines</i>	99	50	0	0			149
Total	99	199	0	0	2,054	0	2,352
Sutter							
<i>Facilities</i>	0	126	0	0	317	0	443
<i>Pipelines</i>	30	15	0	0			45
Total	30	141	0	0	317	0	488

	Potable Water	Waste Water	Oil Systems	Natural Gas	Electric Power	Communication	Total
Tehama							
<i>Facilities</i>	0	369	0	75	793	1	1,238
<i>Pipelines</i>	186	94	0	0			280
Total	186	462	0	75	793	1	1,518
Trinity							
<i>Facilities</i>	0	0	0	0	58,023	0	58,023
<i>Pipelines</i>	518	260	0	0			778
Total	518	260	0	0	58,023	0	58,801
Yolo							
<i>Facilities</i>	0	10	0	0	8	0	18
<i>Pipelines</i>	37	19	0	0			56
Total	37	29	0	0	8	0	74
Yuba							
<i>Facilities</i>	0	10	0	0	793	0	803
<i>Pipelines</i>	35	18	0	0			53
Total	35	28	0	0	793	0	856
Total	18,749	237,459	0	227	383,950	1,095	641,481
Region Total	18,749	237,459	0	227	383,950	1,095	641,481

Totals only reflect data for those census tracts/blocks included in the user's study region and will reflect the entire county/state only if all of the census blocks for that county/states were selected at the time of study region creation.

Hazus Quick Assessment Report

Estimated Economic Loss (\$ Billions)

Category	Description	Range
General Building Stock	Building Damage	0.90 - 3.60
	Building Contents	0.10 - 0.30
	Business Interruption	0.20 - 0.80
Infrastructure	Lifelines Damage	
Total		1.40 - 5.50

Preliminary Damage Assessment (PDA) Estimates

Description	Residential	Commercial	Other	Total
Affected	17,800	1,000	340	19,140
Minor	7,400	790	290	8,480
Major	2,700	330	130	3,160
Destroyed	590	60	30	680
Total	28,490	2,180	790	31,460

Estimated Casualties : Night Time

Severity Level	Description	# Persons
Level 1	Medical Aid	100 - 400
Level 2	Hospital Care	20 - 60
Level 3	Life-threatening	< 10
Level 4	Fatalities	< 10

Estimated Shelter Needs

Type	Households	People
Displaced Households	500 - 2,000	1,250 - 5,000
Public Shelter	240	590

Comments :

*Hazus damage estimates are presented using FEMA Preliminary Damage Assessment (PDA) categories. These estimates should be used for planning purposes and may not reflect actual observed damages from the PDA process.

Disclaimer:

The estimates of social and economic impacts contained in this report were produced using HAZUS loss estimation methodology software which is based on current scientific and engineering knowledge. There are uncertainties inherent in any loss estimation technique. Therefore, there may be significant differences between the modeled results contained in this report and the actual social and economic losses following a specific earthquake. These results can be improved by using enhanced inventory, geotechnical, and observed ground motion data.

Earthquake Information

Location :

Origin Time:

Magnitude : 7.87

Epicenter Latitude/Longitude :

/

Depth & Type : /U

Name :

NA

Ground Motion /Attenuation :

Maximum PGA: 1.00

Information Sources:

Comments :

Population and Building Exposure

Population: 1,842,224

Building Exposure : (\$ Millions)

Residential	240,895
Commercial	75,711
Other	68,347
Total	384,953

Counties : See Appendix

Major Metro Area :

Hazus Quick Assessment Report

Estimated Economic Loss (\$ Billions)

Category	Description	Range
General Building Stock	Building Damage	0.90 - 3.60
	Building Contents	0.10 - 0.30
	Business Interruption	0.20 - 0.80
Infrastructure	Lifelines Damage	
Total		1.40 - 5.50

Preliminary Damage Assessment (PDA) Estimates

Description	Residential	Commercial	Other	Total
Affected	17,800	1,000	340	19,140
Minor	7,400	790	290	8,480
Major	2,700	330	130	3,160
Destroyed	590	60	30	680
Total	28,490	2,180	790	31,460

Estimated Casualties : Day Time

Severity Level	Description	# Persons
Level 1	Medical Aid	130 - 500
Level 2	Hospital Care	20 - 90
Level 3	Life-threatening	< 10
Level 4	Fatalities	0 - 20

Estimated Shelter Needs

Type	Households	People
Displaced Households	500 - 2,000	1,250 - 5,000
Public Shelter	240	590

Comments :

*Hazus damage estimates are presented using FEMA Preliminary Damage Assessment (PDA) categories. These estimates should be used for planning purposes and may not reflect actual observed damages from the PDA process.

Disclaimer:

The estimates of social and economic impacts contained in this report were produced using HAZUS loss estimation methodology software which is based on current scientific and engineering knowledge. There are uncertainties inherent in any loss estimation technique. Therefore, there may be significant differences between the modeled results contained in this report and the actual social and economic losses following a specific earthquake. These results can be improved by using enhanced inventory, geotechnical, and observed ground motion data.

Earthquake Information

Location :

Origin Time:

Magnitude : 7.87

Epicenter Latitude/Longitude :
/

Depth & Type : /U

Name :
NA

Ground Motion /Attenuation :

Maximum PGA: 1.00

Information Sources:

Comments :

Population and Building Exposure

Population: 1,842,224

Building Exposure : (\$ Millions)

Residential	240,895
Commercial	75,711
Other	68,347
Total	384,953

Counties : See Appendix

Major Metro Area :

Hazus Quick Assessment Report

Estimated Economic Loss (\$ Billions)

Category	Description	Range
General Building Stock	Building Damage	0.90 - 3.60
	Building Contents	0.10 - 0.30
	Business Interruption	0.20 - 0.80
Infrastructure	Lifelines Damage	
Total		1.40 - 5.50

Preliminary Damage Assessment (PDA) Estimates

Description	Residential	Commercial	Other	Total
Affected	17,800	1,000	340	19,140
Minor	7,400	790	290	8,480
Major	2,700	330	130	3,160
Destroyed	590	60	30	680
Total	28,490	2,180	790	31,460

Estimated Casualties : Commute Time

Severity Level	Description	# Persons
Level 1	Medical Aid	90 - 400
Level 2	Hospital Care	20 - 70
Level 3	Life-threatening	0 - 20
Level 4	Fatalities	< 10

Estimated Shelter Needs

Type	Households	People
Displaced Households	500 - 2,000	1,250 - 5,000
Public Shelter	240	590

Earthquake Information

Location :

Origin Time:

Magnitude : 7.87

Epicenter Latitude/Longitude :
/

Depth & Type : /U

Name :
NA

Ground Motion /Attenuation :

Maximum PGA: 1.00

Information Sources:

Comments :

Population and Building Exposure

Population: 1,842,224

Building Exposure : (\$ Millions)

Residential	240,895
Commercial	75,711
Other	68,347
Total	384,953

Counties : See Appendix

Comments :

Major Metro Area :

*Hazus damage estimates are presented using FEMA Preliminary Damage Assessment (PDA) categories. These estimates should be used for planning purposes and may not reflect actual observed damages from the PDA process.

Disclaimer:

The estimates of social and economic impacts contained in this report were produced using HAZUS loss estimation methodology software which is based on current scientific and engineering knowledge. There are uncertainties inherent in any loss estimation technique. Therefore, there may be significant differences between the modeled results contained in this report and the actual social and economic losses following a specific earthquake. These results can be improved by using enhanced inventory, geotechnical, and observed ground motion data.

Shelter Summary Report

May 01, 2024

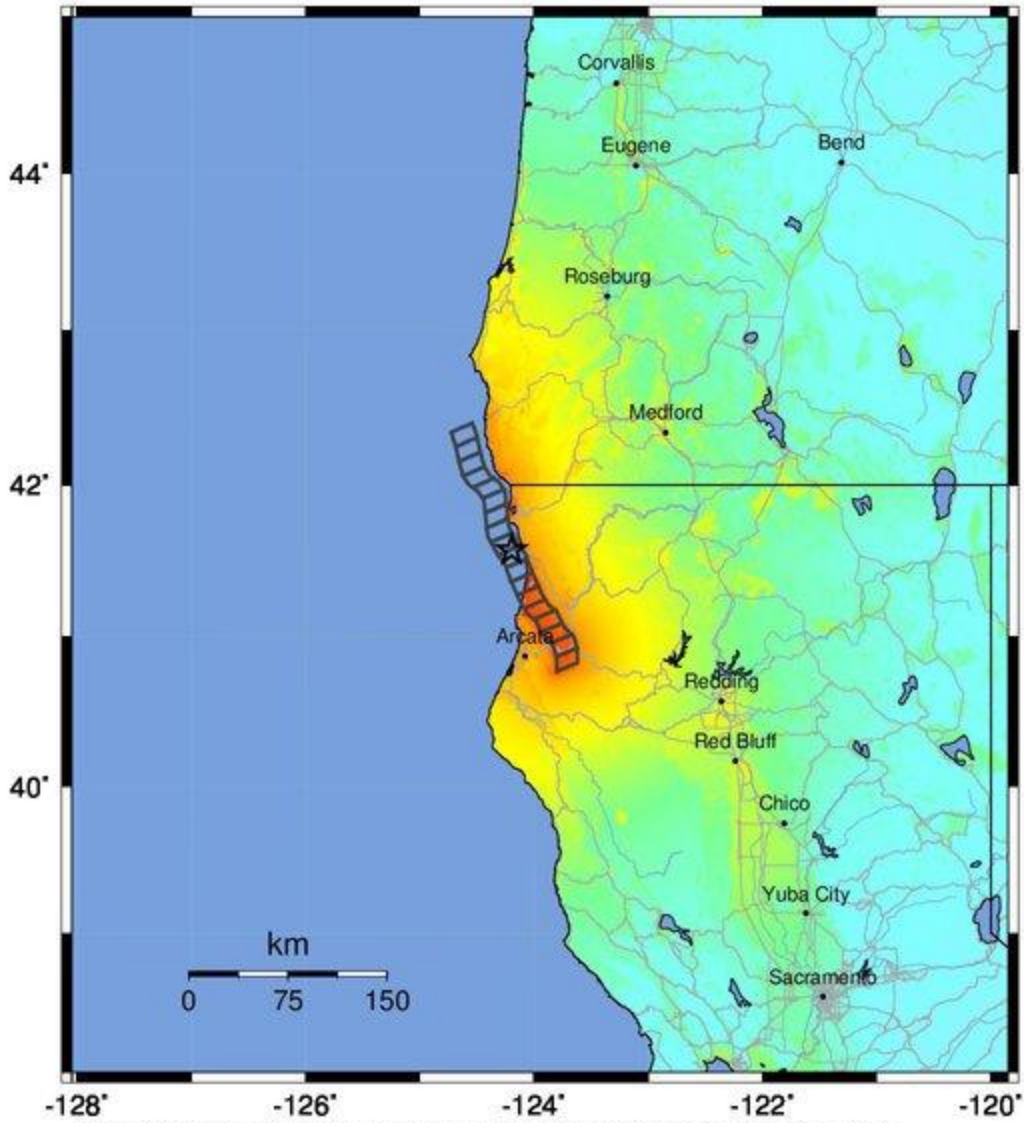
	# of Displaced Households	# of People Needing Short Term Shelter
California		
Butte	0	0
Colusa	0	0
Del Norte	526	334
Glenn	0	0
Humboldt	451	257
Lake	0	0
Lassen	0	0
Mendocino	0	0
Modoc	0	0
Plumas	0	0
Shasta	0	0
Siskiyou	0	0
Sonoma	0	0
Sutter	0	0
Tehama	0	0
Trinity	0	0
Yolo	0	0
Yuba	0	0
Total	978	591
Region Total	978	591

Totals only reflect data for those census tracts/blocks included in the user's study region and will reflect the entire county/state only if all of the census blocks for that county/states were selected at the time of study region creation.

-- Earthquake Planning Scenario --

ShakeMap for Big Lagoon - Bald Mtn - Median ground motions Scenario

Scenario Date: May 16, 2017 08:32:09 AM MDT M 7.9 N41.57 W124.20 Depth: 8.3km



PLANNING SCENARIO ONLY -- Map Version 14 Processed 2017-05-16 01:20:23 PM MDT

PERCEIVED SHAKING	Not felt	Weak	Light	Moderate	Strong	Very strong	Severe	Violent	Extreme
POTENTIAL DAMAGE	none	none	none	Very light	Light	Moderate	Mod./Heavy	Heavy	Very Heavy
PEAK ACC.(%g)	<0.05	0.3	2.8	6.2	12	22	40	75	>139
PEAK VEL.(cm/s)	<0.02	0.1	1.4	4.7	9.6	20	41	86	>178
INSTRUMENTAL INTENSITY	I	II-III	IV	V	VI	VII	VIII	IX	X+

Scale based upon Worden et al. (2012)