
Hazus: Earthquake Global Risk Report

Region Name: BartlettSprings

Earthquake Scenario: bartlettsprings2011c_m7p54_se

Print Date: November 08, 2024

Disclaimer:

Totals only reflect data for those census tracts/blocks included in the user's study region.

The estimates of social and economic impacts contained in this report were produced using Hazus loss estimation methodology software which is based on current scientific and engineering knowledge. There are uncertainties inherent in any loss estimation technique. Therefore, there may be significant differences between the modeled results contained in this report and the actual social and economic losses following a specific earthquake. These results can be improved by using enhanced inventory, geotechnical, and observed ground motion data.

Table of Contents

Section	Page #
General Description of the Region	3
Building and Lifeline Inventory	4
Building Inventory	
Critical Facility Inventory	
Transportation and Utility Lifeline Inventory	
Earthquake Scenario Parameters	7
Direct Earthquake Damage	8
Buildings Damage	
Essential Facilities Damage	
Transportation and Utility Lifeline Damage	
Induced Earthquake Damage	14
Fire Following Earthquake	
Debris Generation	
Social Impact	15
Shelter Requirements	
Casualties	
Economic Loss	17
Building Related Losses	
Transportation and Utility Lifeline Losses	
Appendix A: County Listing for the Region	
Appendix B: Regional Population and Building Value Data	

General Description of the Region

Hazus-MH is a regional earthquake loss estimation model that was developed by the Federal Emergency Management Agency (FEMA) and the National Institute of Building Sciences. The primary purpose of Hazus is to provide a methodology and software application to develop multi-hazard losses at a regional scale. These loss estimates would be used primarily by local, state and regional officials to plan and stimulate efforts to reduce risks from multi-hazards and to prepare for emergency response and recovery.

The earthquake loss estimates provided in this report was based on a region that includes 37 county(ies) from the following state(s):

California

Note:

Appendix A contains a complete listing of the counties contained in the region.

The geographical size of the region is 64,207.63 square miles and contains 3,093 census tracts. There are over 4,775 thousand households in the region which has a total population of 13,375,397 people. The distribution of population by Total Region and County is provided in Appendix B.

There are an estimated 4,207 thousand buildings in the region with a total building replacement value (excluding contents) of (millions of dollars). Approximately 90.00 % of the buildings (and % of the building value) are associated with residential housing.

The replacement value of the transportation and utility lifeline systems is estimated to be 232,376 and 163,149 (millions of dollars) , respectively.

Building and Lifeline Inventory

Building Inventory

Hazus estimates that there are 4,207 thousand buildings in the region which have an aggregate total replacement value of (millions of dollars) . Appendix B provides a general distribution of the building value by Total Region and County.

In terms of building construction types found in the region, wood frame construction makes up 86% of the building inventory. The remaining percentage is distributed between the other general building types.

Critical Facility Inventory

Hazus breaks critical facilities into two (2) groups: essential facilities and high potential loss facilities (HPL). Essential facilities include hospitals, medical clinics, schools, fire stations, police stations and emergency operations facilities. High potential loss facilities include dams, levees, military installations, nuclear power plants and hazardous material sites.

For essential facilities, there are 241 hospitals in the region with a total bed capacity of 33,168 beds. There are 5,052 schools, 1,523 fire stations, 469 police stations and 82 emergency operation facilities. With respect to high potential loss facilities (HPL), there are no dams identified within the inventory. The inventory also includes no hazardous material sites, no military installations and no nuclear power plants.

Transportation and Utility Lifeline Inventory

Within Hazus, the lifeline inventory is divided between transportation and utility lifeline systems. There are seven (7) transportation systems that include highways, railways, light rail, bus, ports, ferry and airports. There are six (6) utility systems that include potable water, wastewater, natural gas, crude & refined oil, electric power and communications. The lifeline inventory data are provided in Tables 1 and 2.

The total value of the lifeline inventory is over 395,525.00 (millions of dollars). This inventory includes over 10,299.22 miles of highways, 11,699 bridges, 255,027.44 miles of pipes.

Table 1: Transportation System Lifeline Inventory

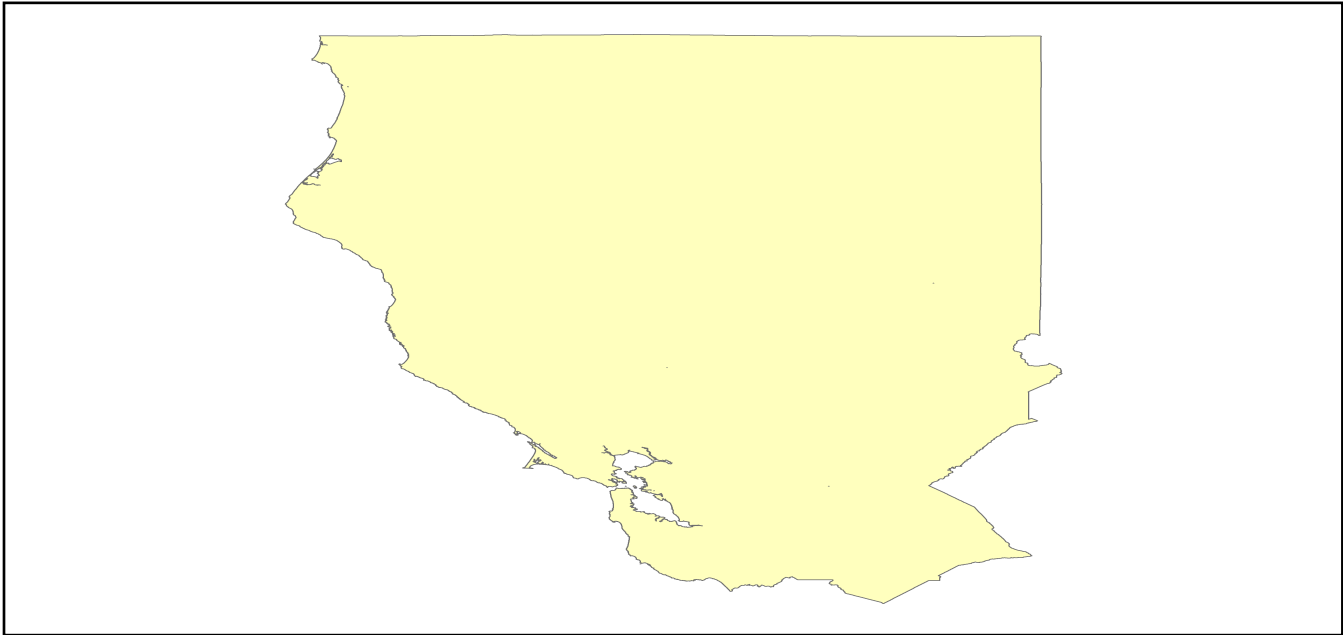
System	Component	# Locations/ # Segments	Replacement value (millions of dollars)
Highway	Bridges	11,699	57484.2585
	Segments	6,453	87081.9073
	Tunnels	43	892.1052
	Subtotal		145458.2710
Railways	Bridges	1,818	10344.4200
	Facilities	72	191.7360
	Segments	3,289	61025.5209
	Tunnels	3	1.8495
	Subtotal		71563.5264
Light Rail	Bridges	112	15.3529
	Facilities	255	4154.0000
	Segments	15	5403.2756
	Tunnels	0	0.0000
	Subtotal		9572.6285
Bus	Facilities	35	80.5850
	Subtotal		80.5850
Ferry	Facilities	25	33.2750
	Subtotal		33.2750
Port	Facilities	382	1456.1247
	Subtotal		1456.1247
Airport	Facilities	129	2842.6355
	Runways	167	1369.2125
	Subtotal		4211.8480
		Total	232,376.30

Table 2: Utility System Lifeline Inventory

System	Component	# Locations / Segments	Replacement value (millions of dollars)
Potable Water	Distribution Lines	NA	5077.2436
	Facilities	25	982.3500
	Pipelines	0	0.0000
		Subtotal	6059.5936
Waste Water	Distribution Lines	NA	3046.3462
	Facilities	193	33186.6974
	Pipelines	0	0.0000
		Subtotal	36233.0436
Natural Gas	Distribution Lines	NA	2030.8975
	Facilities	4	164.9741
	Pipelines	949	14962.6958
		Subtotal	17158.5674
Oil Systems	Facilities	16	1.8880
	Pipelines	0	0.0000
		Subtotal	1.8880
Electrical Power	Facilities	318	103652.5302
		Subtotal	103652.5302
Communication	Facilities	373	44.0140
		Subtotal	44.0140
	Total		163,149.60

Earthquake Scenario

Hazus uses the following set of information to define the earthquake parameters used for the earthquake loss estimate provided in this report.



Scenario Name	bartlettsprings2011c_m7p54_se
Type of Earthquake	User-defined
Fault Name	NA
Historical Epicenter ID #	NA
Probabilistic Return Period	NA
Longitude of Epicenter	NA
Latitude of Epicenter	NA
Earthquake Magnitude	7.54
Depth (km)	NA
Rupture Length (Km)	NA
Rupture Orientation (degrees)	NA
Attenuation Function	NA

Direct Earthquake Damage

Building Damage

Hazus estimates that about 11,608 buildings will be at least moderately damaged. This is over 0.00 % of the buildings in the region. There are an estimated 182 buildings that will be damaged beyond repair. The definition of the 'damage states' is provided in Volume 1: Chapter 5 of the Hazus technical manual. Table 3 below summarizes the expected damage by general occupancy for the buildings in the region. Table 4 below summarizes the expected damage by general building type.

Damage Categories by General Occupancy Type

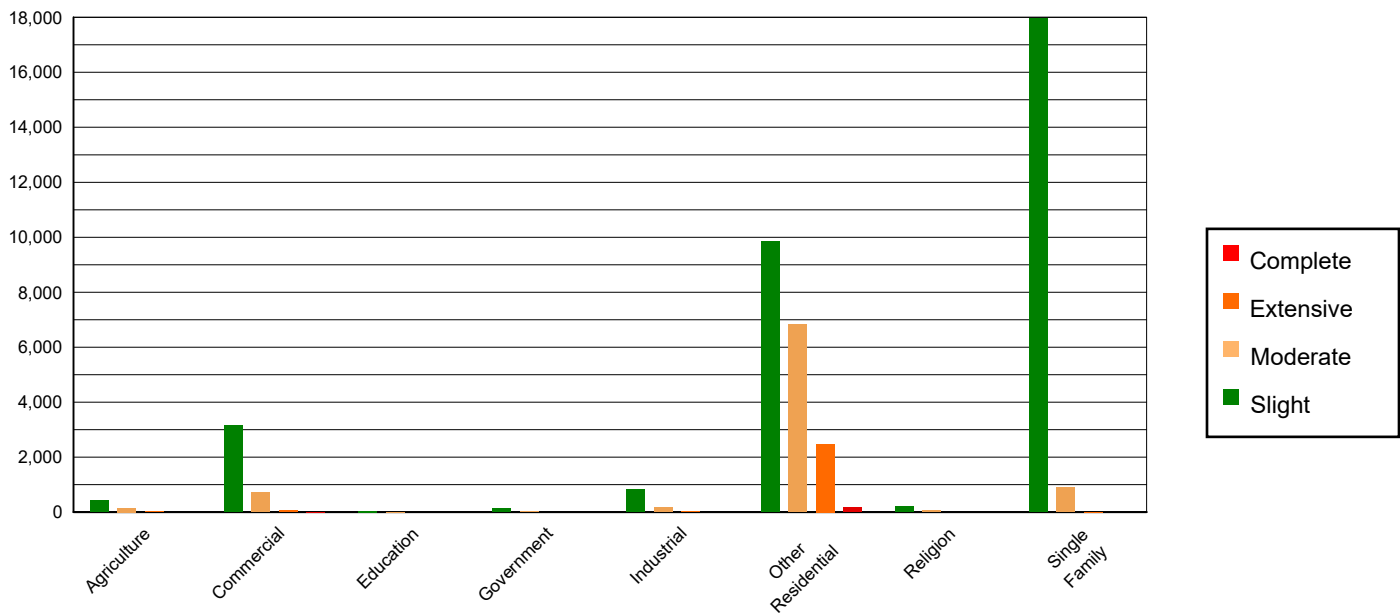


Table 3: Expected Building Damage by Occupancy

	None		Slight		Moderate		Extensive		Complete	
	Count	(%)	Count	(%)	Count	(%)	Count	(%)	Count	(%)
Agriculture	26613.14	0.64	436.52	1.34	153.05	1.73	19.97	0.77	0.32	0.18
Commercial	265652.45	6.38	3140.53	9.64	719.04	8.14	72.96	2.81	5.02	2.74
Education	8607.30	0.21	40.99	0.13	6.47	0.07	0.24	0.01	0.00	0.00
Government	21556.99	0.52	139.29	0.43	25.61	0.29	2.03	0.08	0.07	0.04
Industrial	72975.74	1.75	817.84	2.51	167.99	1.90	13.04	0.50	0.40	0.22
Other Residential	527642.37	12.67	9849.08	30.24	6818.90	77.22	2475.78	95.43	176.86	96.75
Religion	14879.73	0.36	198.72	0.61	50.76	0.57	4.67	0.18	0.14	0.07
Single Family	3224947.68	77.47	17948.36	55.10	889.21	10.07	5.75	0.22	0.00	0.00
Total	4,162,875		32,571		8,831		2,594		183	

Table 4: Expected Building Damage by Building Type (All Design Levels)

	None		Slight		Moderate		Extensive		Complete	
	Count	(%)	Count	(%)	Count	(%)	Count	(%)	Count	(%)
Wood	3609753.09	86.71	20336.92	62.44	1014.16	11.48	8.26	0.32	0.08	0.04
Steel	93760.62	2.25	1721.69	5.29	548.06	6.21	64.31	2.48	2.30	1.26
Concrete	106032.23	2.55	1334.51	4.10	357.58	4.05	45.22	1.74	3.31	1.81
Precast	54340.32	1.31	696.99	2.14	151.67	1.72	9.63	0.37	0.18	0.10
RM	164068.31	3.94	639.89	1.96	168.34	1.91	12.80	0.49	0.07	0.04
URM	42712.92	1.03	1465.69	4.50	188.10	2.13	19.36	0.75	4.47	2.44
MH	92207.91	2.22	6375.63	19.57	6403.13	72.51	2434.86	93.85	172.38	94.30
Total	4,162,875		32,571		8,831		2,594		183	

*Note:

- RM Reinforced Masonry
- URM Unreinforced Masonry
- MH Manufactured Housing

Essential Facility Damage

Before the earthquake, the region had 33,168 hospital beds available for use. On the day of the earthquake, the model estimates that only 32,408 hospital beds (98.00%) are available for use by patients already in the hospital and those injured by the earthquake. After one week, 100.00% of the beds will be back in service. By 30 days, 100.00% will be operational.

Table 5: Expected Damage to Essential Facilities

Classification	Total	# Facilities		
		At Least Moderate Damage > 50%	Complete Damage > 50%	With Functionality > 50% on day 1
Hospitals	241	0	0	239
Schools	5,052	8	0	4,990
EOCs	82	0	0	82
PoliceStations	469	0	0	467
FireStations	1,523	1	0	1,508

Transportation Lifeline Damage

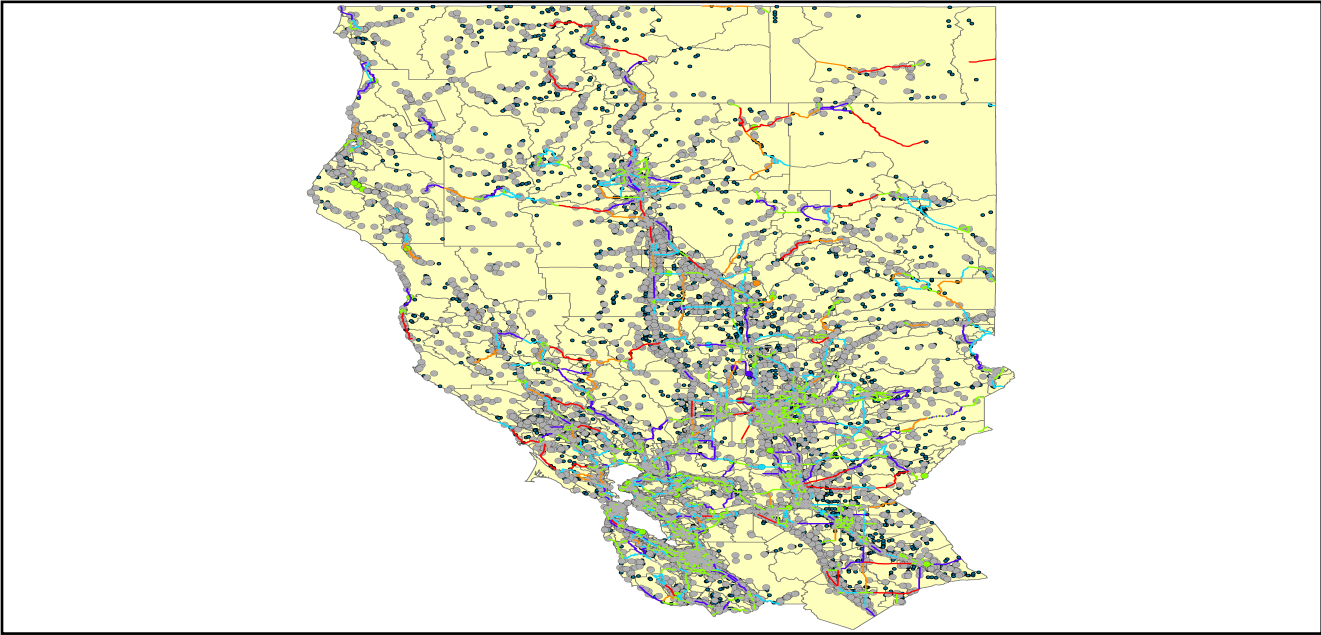


Table 6: Expected Damage to the Transportation Systems

System	Component	Number of Locations_				
		Locations/ Segments	With at Least Mod. Damage	With Complete Damage	With Functionality > 50 %	
					After Day 1	After Day 7
Highway	Segments	6,453	0	0	6,453	6,453
	Bridges	11,699	4	0	11,697	11,698
	Tunnels	43	0	0	43	43
Railways	Segments	3,289	0	0	3,289	3,289
	Bridges	1,818	0	0	1,818	1,818
	Tunnels	3	0	0	3	3
	Facilities	72	0	0	72	72
Light Rail	Segments	15	0	0	15	15
	Bridges	112	0	0	112	112
	Tunnels	0	0	0	0	0
	Facilities	255	0	0	255	255
Bus	Facilities	35	0	0	35	35
Ferry	Facilities	25	0	0	25	25
Port	Facilities	382	0	0	382	382
Airport	Facilities	129	2	0	128	129
	Runways	167	0	0	167	167

Table 6 provides damage estimates for the transportation system.

Note: Roadway segments, railroad tracks and light rail tracks are assumed to be damaged by ground failure only. If ground failure maps are not provided, damage estimates to these components will not be computed.

Tables 7-9 provide information on the damage to the utility lifeline systems. Table 7 provides damage to the utility system facilities. Table 8 provides estimates on the number of leaks and breaks by the pipelines of the utility systems. For electric power and potable water, Hazus performs a simplified system performance analysis. Table 9 provides a summary of the system performance information.

Table 7 : Expected Utility System Facility Damage

System	# of Locations				
	Total #	With at Least Moderate Damage	With Complete Damage	with Functionality > 50 %	
				After Day 1	After Day 7
Potable Water	25	1	0	24	25
Waste Water	193	1	0	192	193
Natural Gas	4	0	0	4	4
Oil Systems	16	0	0	16	16
Electrical Power	318	2	0	316	318
Communication	373	1	0	373	373

Table 8 : Expected Utility System Pipeline Damage (Site Specific)

System	Total Pipelines Length (miles)	Number of Leaks	Number of Breaks
Potable Water	157,743	3305	826
Waste Water	94,646	1660	415
Natural Gas	2,640	0	0
Oil	0	0	0

Table 9: Expected Potable Water and Electric Power System Performance

	Total # of Households	Number of Households without Service				
		At Day 1	At Day 3	At Day 7	At Day 30	At Day 90
Potable Water	4,775,198	4,267	2,708	515	0	0
Electric Power		8,359	4,998	1,859	136	12

Induced Earthquake Damage

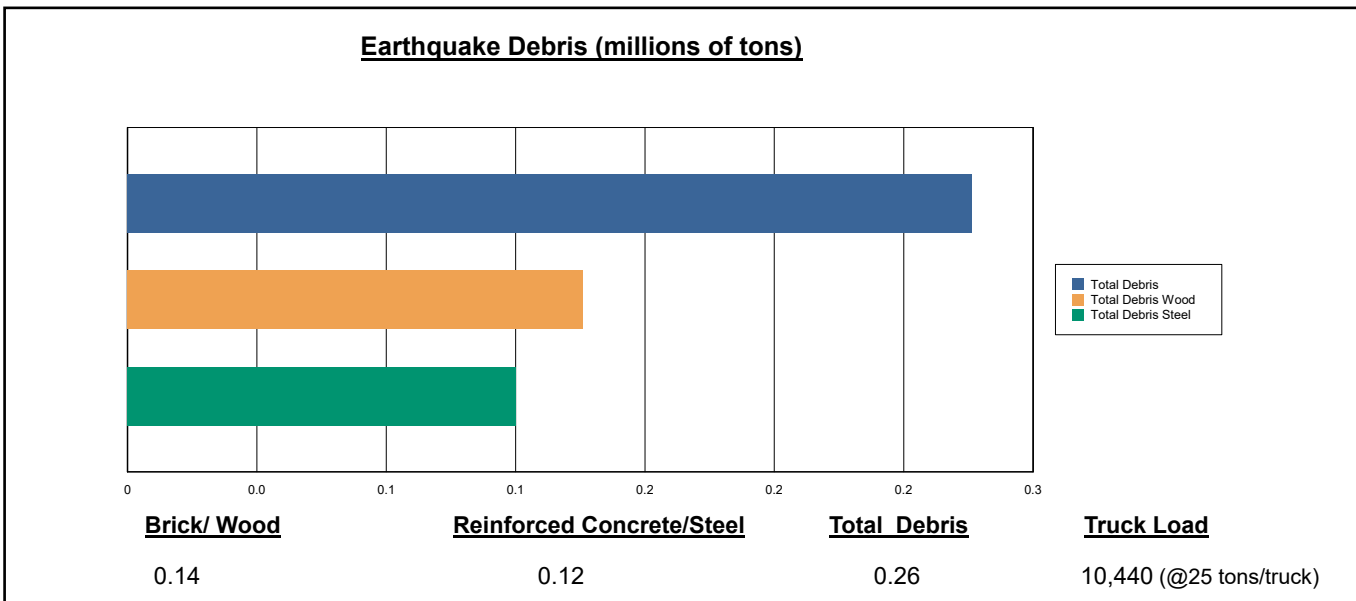
Fire Following Earthquake

Fires often occur after an earthquake. Because of the number of fires and the lack of water to fight the fires, they can often burn out of control. Hazus uses a Monte Carlo simulation model to estimate the number of ignitions and the amount of burnt area. For this scenario, the model estimates that there will be 6 ignitions that will burn about 0.02 sq. mi (0.00 % of the region's total area.) The model also estimates that the fires will displace about 208 people and burn about 24 (millions of dollars) of building value.

Debris Generation

Hazus estimates the amount of debris that will be generated by the earthquake. The model breaks the debris into two general categories: a) Brick/Wood and b) Reinforced Concrete/Steel. This distinction is made because of the different types of material handling equipment required to handle the debris.

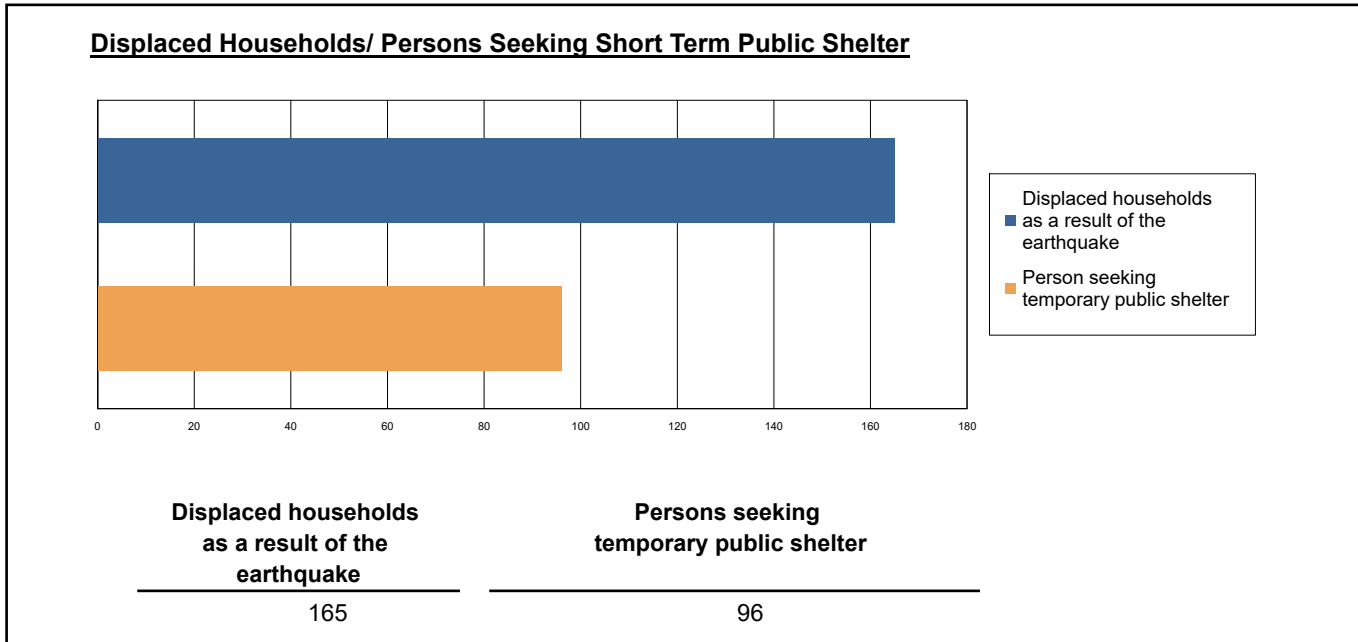
The model estimates that a total of 261,000 tons of debris will be generated. Of the total amount, Brick/Wood comprises 54.00% of the total, with the remainder being Reinforced Concrete/Steel. If the debris tonnage is converted to an estimated number of truckloads, it will require 10,440 truckloads (@25 tons/truck) to remove the debris generated by the earthquake.



Social Impact

Shelter Requirement

Hazus estimates the number of households that are expected to be displaced from their homes due to the earthquake and the number of displaced people that will require accommodations in temporary public shelters. The model estimates 165 households to be displaced due to the earthquake. Of these, 96 people (out of a total population of 13,375,397) will seek temporary shelter in public shelters.



Casualties

Hazus estimates the number of people that will be injured and killed by the earthquake. The casualties are broken down into four (4) severity levels that describe the extent of the injuries. The levels are described as follows;

- Severity Level 1: Injuries will require medical attention but hospitalization is not needed.
- Severity Level 2: Injuries will require hospitalization but are not considered life-threatening
- Severity Level 3: Injuries will require hospitalization and can become life threatening if not promptly treated.
- Severity Level 4: Victims are killed by the earthquake.

The casualty estimates are provided for three (3) times of day: 2:00 AM, 2:00 PM and 5:00 PM. These times represent the periods of the day that different sectors of the community are at their peak occupancy loads. The 2:00 AM estimate considers that the residential occupancy load is maximum, the 2:00 PM estimate considers that the educational, commercial and industrial sector loads are maximum and 5:00 PM represents peak commute time.

Table 10 provides a summary of the casualties estimated for this earthquake

Table 10: Casualty Estimates

		Level 1	Level 2	Level 3	Level 4
2 AM	Commercial	1.14	0.09	0.00	0.01
	Commuting	0.01	0.02	0.03	0.01
	Educational	0.00	0.00	0.00	0.00
	Hotels	0.08	0.01	0.00	0.00
	Industrial	0.87	0.07	0.00	0.01
	Other-Residential	119.64	14.32	0.45	0.72
	Single Family	23.86	0.46	0.00	0.00
	Total	146	15	0	1
2 PM	Commercial	73.45	6.04	0.30	0.57
	Commuting	0.11	0.14	0.24	0.05
	Educational	10.90	0.63	0.01	0.02
	Hotels	0.01	0.00	0.00	0.00
	Industrial	6.33	0.49	0.02	0.04
	Other-Residential	43.04	5.26	0.17	0.28
	Single Family	7.86	0.18	0.00	0.00
	Total	142	13	1	1
5 PM	Commercial	46.38	3.87	0.19	0.36
	Commuting	1.38	1.74	3.06	0.59
	Educational	1.21	0.03	0.00	0.00
	Hotels	0.02	0.00	0.00	0.00
	Industrial	3.95	0.31	0.01	0.02
	Other-Residential	42.66	5.12	0.16	0.27
	Single Family	8.58	0.18	0.00	0.00
	Total	104	11	3	1

Economic Loss

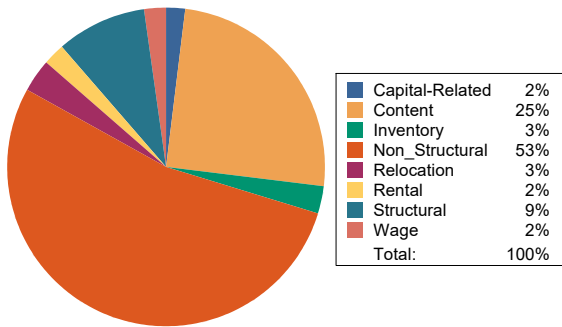
The total economic loss estimated for the earthquake is 4,066.46 (millions of dollars), which includes building and lifeline related losses based on the region's available inventory. The following three sections provide more detailed information about these losses.

Building-Related Losses

The building losses are broken into two categories: direct building losses and business interruption losses. The direct building losses are the estimated costs to repair or replace the damage caused to the building and its contents. The business interruption losses are the losses associated with inability to operate a business because of the damage sustained during the earthquake. Business interruption losses also include the temporary living expenses for those people displaced from their homes because of the earthquake.

The total building-related losses were 2,084.80 (millions of dollars); 10 % of the estimated losses were related to the business interruption of the region. By far, the largest loss was sustained by the residential occupancies which made up over 45 % of the total loss. Table 11 below provides a summary of the losses associated with the building damage.

Earthquake Losses by Loss Type (\$ millions)



Earthquake Losses by Occupancy Type (\$ millions)

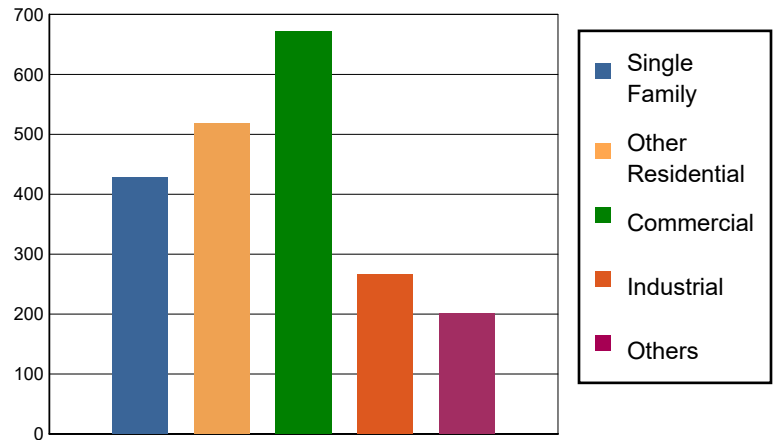


Table 11: Building-Related Economic Loss Estimates
(Millions of dollars)

Category	Area	Single Family	Other Residential	Commercial	Industrial	Others	Total
Income Losses							
	Wage	0.0000	7.6513	35.7982	1.3473	4.2007	48.9975
	Capital-Related	0.0000	3.2485	36.9460	0.8464	0.8051	41.8460
	Rental	2.2823	17.6786	21.9043	0.9493	1.4759	44.2904
	Relocation	4.8322	31.6504	23.1600	4.1941	7.6739	71.5106
	Subtotal	7.1145	60.2288	117.8085	7.3371	14.1556	206.6445
Capital Stock Losses							
	Structural	32.5791	65.0838	50.0696	16.8528	23.1299	187.7152
	Non_Structural	274.5839	318.9804	294.2452	132.8827	93.7596	1,114.4518
	Content	113.5212	73.4411	179.2140	94.0044	59.4249	519.6056
	Inventory	0.0000	0.0000	30.6775	14.4277	11.2819	56.3871
	Subtotal	420.6842	457.5053	554.2063	258.1676	187.5963	1878.1597
	Total	427.80	517.73	672.01	265.50	201.75	2084.80

Transportation and Utility Lifeline Losses

For the transportation and utility lifeline systems, Hazus computes the direct repair cost for each component only. There are no losses computed by Hazus for business interruption due to lifeline outages. Tables 12 & 13 provide a detailed breakdown in the expected lifeline losses.

Table 12: Transportation System Economic Losses
(Millions of dollars)

System	Component	Inventory Value	Economic Loss	Loss Ratio (%)
Highway	Segments	87081.9073	0.0000	0.00
	Bridges	57484.2585	17.8975	0.03
	Tunnels	892.1052	0.0000	0.00
	Subtotal	145458.2710	17.8975	
Railways	Segments	61025.5209	0.0000	0.00
	Bridges	10344.4200	0.7267	0.01
	Tunnels	1.8495	0.0000	0.00
	Facilities	191.7360	2.5076	1.31
	Subtotal	71563.5264	3.2343	
Light Rail	Segments	5403.2756	0.0000	0.00
	Bridges	15.3529	0.0000	0.00
	Tunnels	0.0000	0.0000	0.00
	Facilities	4154.0000	43.6949	1.05
	Subtotal	9572.6285	43.6949	
Bus	Facilities	80.5850	1.9729	2.45
	Subtotal	80.5850	1.9729	
Ferry	Facilities	33.2750	0.4876	1.47
	Subtotal	33.2750	0.4876	
Port	Facilities	1456.1247	27.1594	1.87
	Subtotal	1456.1247	27.1594	
Airport	Facilities	2842.6355	55.4910	1.95
	Runways	1369.2125	0.0000	0.00
	Subtotal	4211.8480	55.4910	
Total		232,376.26	149.94	

Table 13: Utility System Economic Losses
(Millions of dollars)

System	Component	Inventory Value	Economic Loss	Loss Ratio (%)
Potable Water	Pipelines	0.0000	0.0000	0.00
	Facilities	982.3500	14.3197	1.46
	Distribution Lines	5077.2436	14.8707	0.29
	Subtotal	6059.5936	29.1904	
Waste Water	Pipelines	0.0000	0.0000	0.00
	Facilities	33186.6974	229.1851	0.69
	Distribution Lines	3046.3462	7.4699	0.25
	Subtotal	36233.0436	236.6550	
Natural Gas	Pipelines	14962.6958	0.0000	0.00
	Facilities	164.9741	2.2533	1.37
	Distribution Lines	2030.8975	2.5591	0.13
	Subtotal	17158.5674	4.8124	
Oil Systems	Pipelines	0.0000	0.0000	0.00
	Facilities	1.8880	0.0033	0.17
	Subtotal	1.8880	0.0033	
Electrical Power	Facilities	103652.5302	1560.4335	1.51
	Subtotal	103652.5302	1560.4335	
Communication	Facilities	44.0140	0.6250	1.42
	Subtotal	44.0140	0.6250	
	Total	163,149.64	1,831.72	

Appendix A: County Listing for the Region

Alameda,CA
Amador,CA
Butte,CA
Calaveras,CA
Colusa,CA
Contra Costa,CA
Del Norte,CA
El Dorado,CA
Glenn,CA
Humboldt,CA
Lake,CA
Lassen,CA
Marin,CA
Mendocino,CA
Merced,CA
Modoc,CA
Napa,CA
Nevada,CA
Placer,CA
Plumas,CA
Sacramento,CA
San Francisco,CA
San Joaquin,CA
San Mateo,CA
Santa Clara,CA
Santa Cruz,CA
Shasta,CA
Sierra,CA
Siskiyou,CA

Solano,CA

Sonoma,CA

Stanislaus,CA

Sutter,CA

Tehama,CA

Trinity,CA

Yolo,CA

Yuba,CA

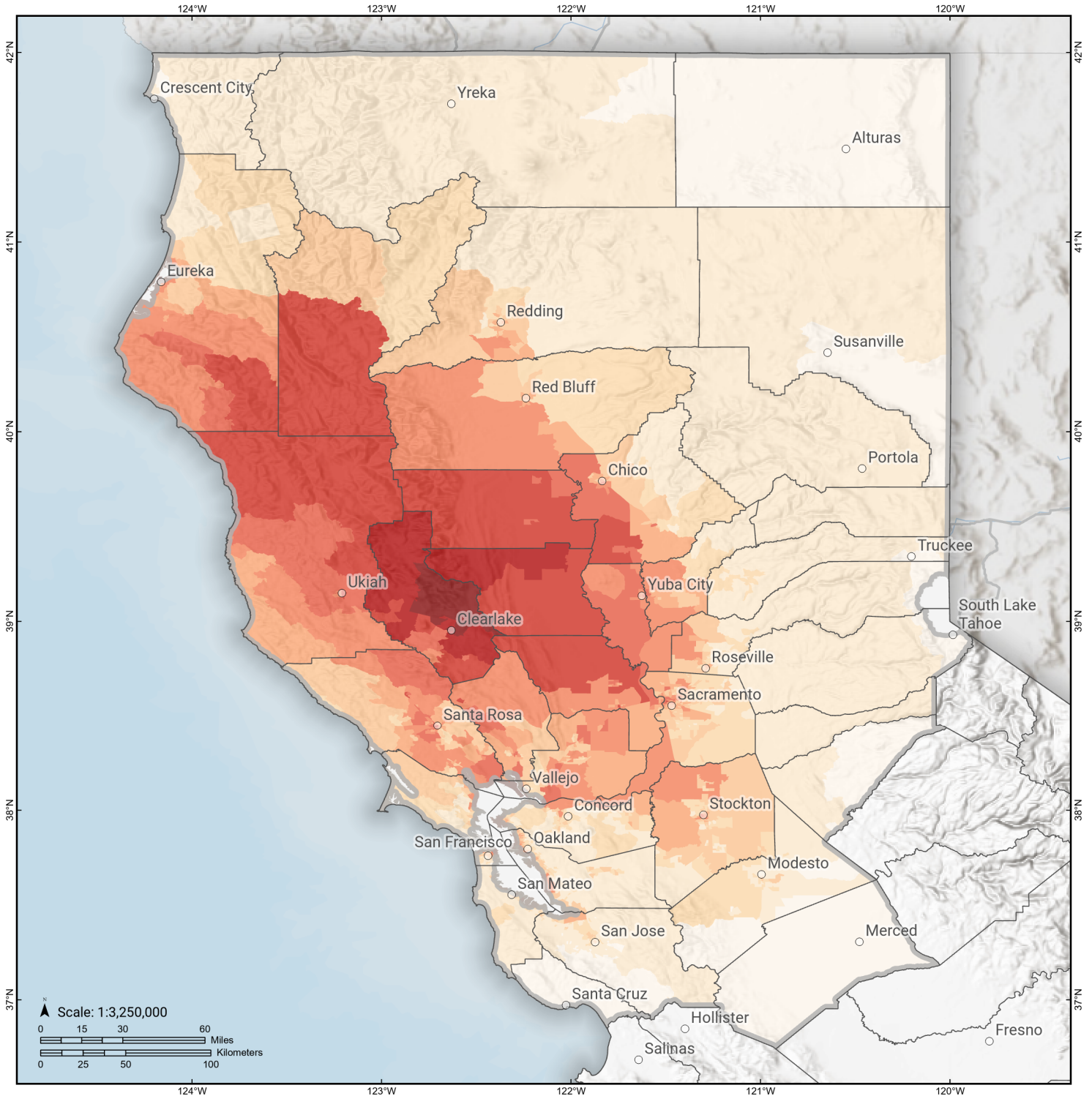
Appendix B: Regional Population and Building Value Data

State	County Name	Population	Building Value (millions of dollars)		
			Residential	Non-Residential	Total
California	Alameda	1,682,353	209,951	122,639	332,590
	Amador	40,474	5,608	2,517	8,125
	Butte	211,632	25,875	16,639	42,514
	Calaveras	45,292	8,305	4,893	13,199
	Colusa	21,839	2,244	2,024	4,268
	Contra Costa	1,165,927	158,118	60,339	218,458
	Del Norte	27,743	5,004	1,876	6,881
	El Dorado	191,185	34,907	9,704	44,611
	Glenn	28,917	2,791	3,717	6,508
	Humboldt	136,463	19,361	8,683	28,044
	Lake	68,163	9,699	4,530	14,229
	Lassen	32,730	4,033	2,008	6,042
	Marin	262,321	47,738	15,030	62,769
	Mendocino	91,601	14,237	8,510	22,748
	Merced	281,202	25,194	26,098	51,292
	Modoc	8,700	1,435	1,468	2,904
	Napa	138,019	20,517	13,045	33,563
	Nevada	102,241	17,908	6,108	24,016
	Placer	404,739	69,985	24,193	94,179
	Plumas	19,790	6,128	2,276	8,405
	Sacramento	1,585,055	179,811	83,911	263,723
	San Francisco	873,965	108,848	46,020	154,869
	San Joaquin	779,233	82,706	56,882	139,589
	San Mateo	764,442	110,372	44,995	155,368
	Santa Clara	1,936,259	261,111	120,471	381,582
	Santa Cruz	270,861	36,147	18,805	54,952
	Shasta	182,155	21,572	15,715	37,288
	Sierra	3,236	596	419	1,015
	Siskiyou	44,076	6,856	4,758	11,615
	Solano	453,491	55,802	26,393	82,195
	Sonoma	488,863	68,827	35,781	104,609
	Stanislaus	552,878	62,937	37,511	100,449
	Sutter	99,633	10,618	6,448	17,066
	Tehama	65,829	7,705	5,113	12,818
	Trinity	16,112	2,209	1,485	3,694
	Yolo	216,403	24,130	18,343	42,473
	Yuba	81,575	8,161	4,677	12,839
Total Region		13,375,397	1,737,446	864,024	2,601,489



Bartlett Springs

Debris Generated by Census Tract



Study Region: Bartlett Springs
Scenario: bartlettsprings2011c_m7p54_se

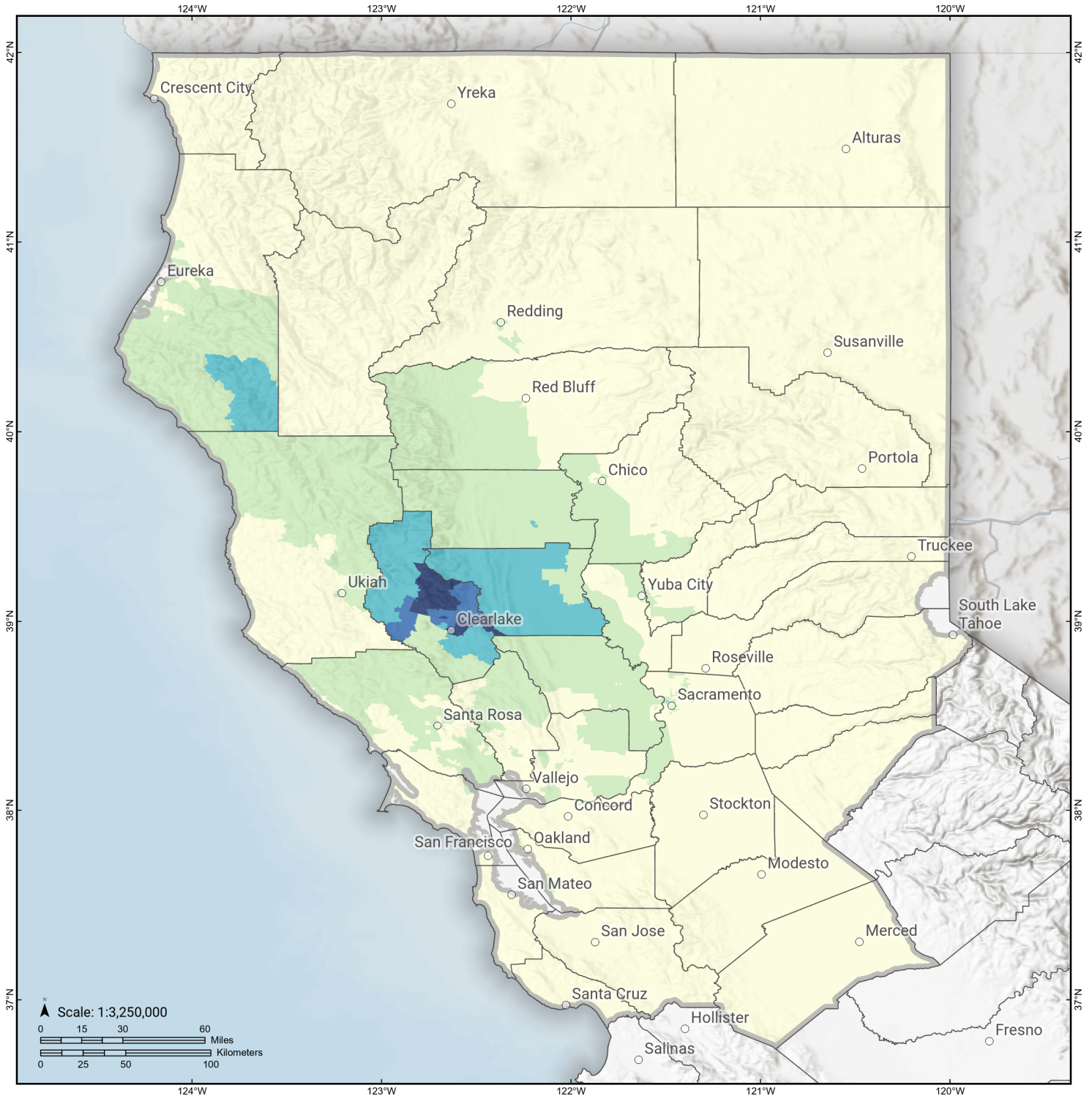


Debris Generated (in tons)



Bartlett Springs

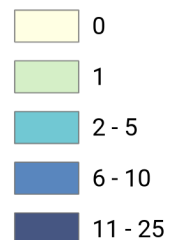
Displaced Households by Census Tract



Study Region: Bartlett Springs
Scenario: bartlettsprings2011c_m7p54_se

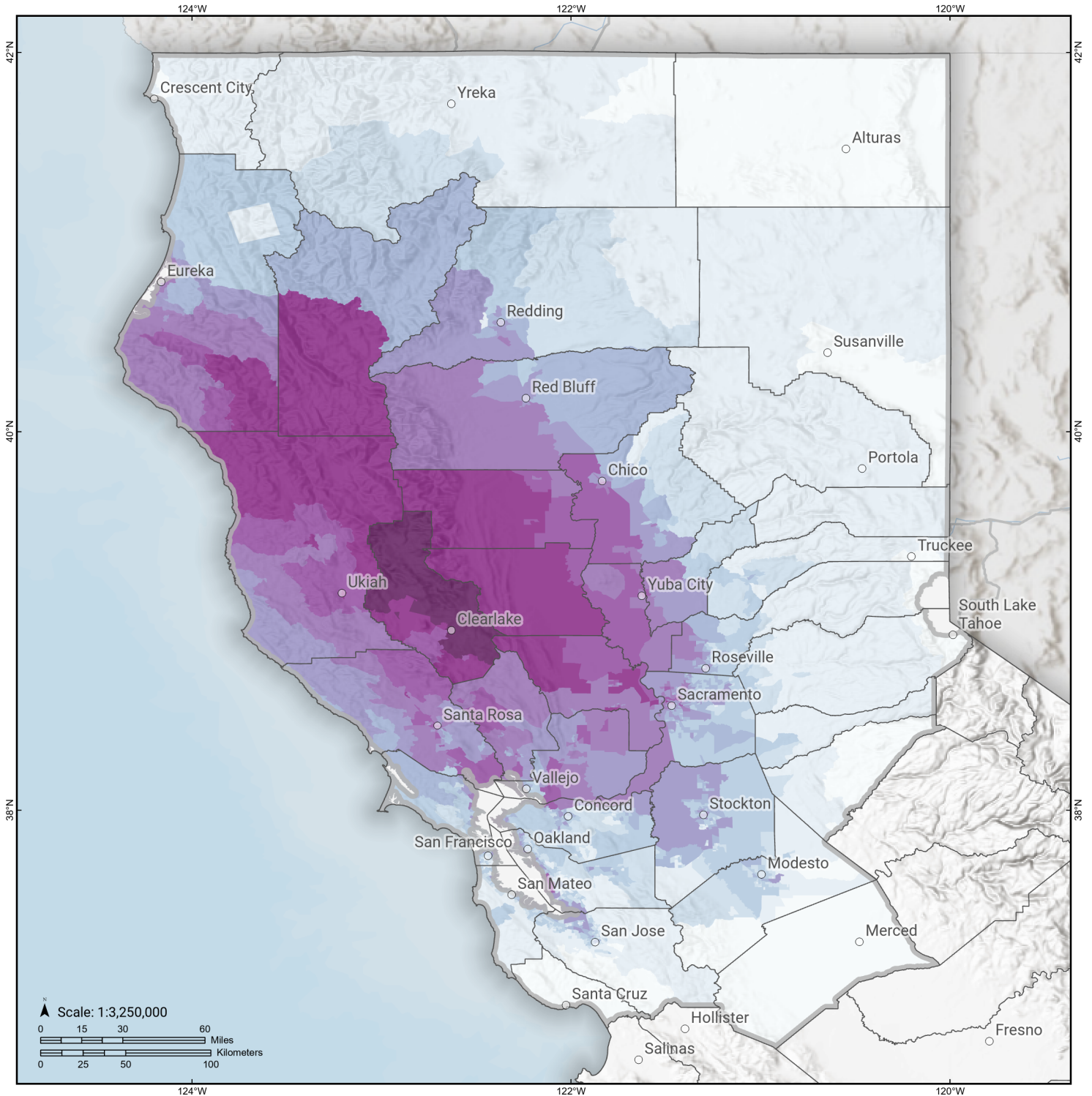


Displaced Households



Bartlett Springs

Total Building Related Economic Loss by Census Tract



Study Region: Bartlett Springs
Scenario: bartlettsprings2011c_m7p54_se



Economic Loss (in thousands of USD \$)

0	>250 - 1,000
>0 - 10	>1,000 - 3,000
>10 - 25	>3,000 - 10,000
>25 - 100	>10,000 - 30,000
>100 - 250	>30,000 - 92,180

Building Damage by Count by General Occupancy

November 08, 2024

	# of Buildings					Total
	None	Slight	Moderate	Extensive	Complete	
California						
Alameda						
<i>Government</i>	10,507	20	1	0	0	10,528
<i>Agriculture</i>	420	1	0	0	0	422
<i>Commercial</i>	31,821	156	12	0	0	31,989
<i>Religion</i>	1,975	10	1	0	0	1,986
<i>Single Family</i>	344,108	65	0	0	0	344,173
<i>Other Residential</i>	61,243	144	9	0	0	61,396
<i>Education</i>	1,114	3	0	0	0	1,117
<i>Industrial</i>	10,157	44	4	0	0	10,205
Amador						
<i>Industrial</i>	235	0	0	0	0	235
<i>Single Family</i>	14,962	0	0	0	0	14,962
<i>Other Residential</i>	1,037	0	0	0	0	1,037
<i>Education</i>	23	0	0	0	0	23
<i>Government</i>	32	0	0	0	0	32
<i>Agriculture</i>	44	0	0	0	0	44
<i>Religion</i>	45	0	0	0	0	45
<i>Commercial</i>	1,368	0	0	0	0	1,368
Butte						

	# of Buildings					Total
	None	Slight	Moderate	Extensive	Complete	
<i>Government</i>	141	5	1	0	0	147
<i>Religion</i>	515	13	3	0	0	531
<i>Agriculture</i>	481	19	9	1	0	510
<i>Commercial</i>	6,273	97	15	0	0	6,385
<i>Industrial</i>	1,470	40	11	1	0	1,522
<i>Single Family</i>	50,050	233	1	0	0	50,283
<i>Other Residential</i>	21,048	360	86	3	0	21,498
<i>Education</i>	171	1	0	0	0	172
Calaveras						
<i>Government</i>	84	0	0	0	0	84
<i>Other Residential</i>	2,559	0	0	0	0	2,559
<i>Education</i>	35	0	0	0	0	35
<i>Religion</i>	130	0	0	0	0	130
<i>Agriculture</i>	2,207	0	0	0	0	2,207
<i>Commercial</i>	1,413	0	0	0	0	1,413
<i>Industrial</i>	466	0	0	0	0	466
<i>Single Family</i>	22,148	0	0	0	0	22,148
Colusa						
<i>Agriculture</i>	96	33	12	1	0	142
<i>Religion</i>	40	12	5	1	0	58
<i>Commercial</i>	564	153	67	10	0	794
<i>Industrial</i>	85	21	7	1	0	113
<i>Other Residential</i>	689	180	76	9	0	954
<i>Single Family</i>	4,995	925	33	0	0	5,954
<i>Government</i>	25	5	2	0	0	32

	# of Buildings					Total
	None	Slight	Moderate	Extensive	Complete	
<i>Education</i>	29	3	1	0	0	33
Contra Costa						
<i>Commercial</i>	17,920	63	8	0	0	17,991
<i>Agriculture</i>	745	3	1	0	0	749
<i>Religion</i>	1,218	7	1	0	0	1,226
<i>Single Family</i>	281,761	174	0	0	0	281,935
<i>Other Residential</i>	28,993	123	7	0	0	29,124
<i>Industrial</i>	4,716	29	4	0	0	4,749
<i>Government</i>	5,003	19	2	0	0	5,024
<i>Education</i>	652	1	0	0	0	653
Del Norte						
<i>Commercial</i>	729	0	0	0	0	729
<i>Agriculture</i>	134	0	0	0	0	134
<i>Government</i>	18	0	0	0	0	18
<i>Religion</i>	53	0	0	0	0	53
<i>Other Residential</i>	3,861	0	0	0	0	3,861
<i>Education</i>	31	0	0	0	0	31
<i>Industrial</i>	61	0	0	0	0	61
<i>Single Family</i>	6,117	0	0	0	0	6,117
El Dorado						
<i>Other Residential</i>	10,419	1	0	0	0	10,420
<i>Industrial</i>	1,199	0	0	0	0	1,199
<i>Education</i>	128	0	0	0	0	128
<i>Single Family</i>	71,424	0	0	0	0	71,424
<i>Commercial</i>	4,768	0	0	0	0	4,768

	# of Buildings					Total
	None	Slight	Moderate	Extensive	Complete	
<i>Government</i>	100	0	0	0	0	100
<i>Religion</i>	180	0	0	0	0	180
<i>Agriculture</i>	161	0	0	0	0	161
Glenn						
<i>Other Residential</i>	1,743	320	85	3	0	2,152
<i>Government</i>	91	7	1	0	0	99
<i>Education</i>	34	1	0	0	0	35
<i>Industrial</i>	226	21	6	0	0	254
<i>Single Family</i>	7,108	305	3	0	0	7,417
<i>Commercial</i>	776	82	25	2	0	885
<i>Agriculture</i>	1,175	129	53	7	0	1,365
<i>Religion</i>	77	9	2	0	0	89
Humboldt						
<i>Government</i>	83	3	1	0	0	87
<i>Agriculture</i>	142	7	1	0	0	150
<i>Religion</i>	58	3	1	0	0	61
<i>Commercial</i>	2,955	134	27	1	0	3,118
<i>Single Family</i>	37,625	726	8	0	0	38,359
<i>Other Residential</i>	11,485	457	111	4	0	12,058
<i>Education</i>	125	1	0	0	0	127
<i>Industrial</i>	686	38	14	1	0	740
Lake						
<i>Agriculture</i>	103	39	16	3	0	161
<i>Single Family</i>	13,998	6,883	746	6	0	21,633
<i>Other Residential</i>	3,241	3,405	5,367	2,411	176	14,601

	# of Buildings					Total
	None	Slight	Moderate	Extensive	Complete	
<i>Education</i>	54	12	2	0	0	68
<i>Industrial</i>	229	83	35	6	0	354
<i>Commercial</i>	1,127	607	302	51	5	2,091
<i>Religion</i>	78	39	21	3	0	140
<i>Government</i>	47	21	9	1	0	78
Lassen						
<i>Other Residential</i>	2,627	0	0	0	0	2,627
<i>Education</i>	40	0	0	0	0	40
<i>Government</i>	22	0	0	0	0	22
<i>Industrial</i>	140	0	0	0	0	140
<i>Commercial</i>	913	0	0	0	0	913
<i>Religion</i>	71	0	0	0	0	71
<i>Agriculture</i>	37	0	0	0	0	37
<i>Single Family</i>	9,562	0	0	0	0	9,562
Marin						
<i>Other Residential</i>	7,858	29	2	0	0	7,890
<i>Government</i>	143	0	0	0	0	143
<i>Education</i>	274	0	0	0	0	274
<i>Commercial</i>	8,240	28	2	0	0	8,270
<i>Religion</i>	318	1	0	0	0	319
<i>Agriculture</i>	188	1	0	0	0	190
<i>Single Family</i>	76,666	58	0	0	0	76,724
<i>Industrial</i>	1,519	15	1	0	0	1,535
Mendocino						
<i>Commercial</i>	3,092	290	52	1	0	3,436

	# of Buildings					Total
	None	Slight	Moderate	Extensive	Complete	
<i>Religion</i>	188	22	6	0	0	216
<i>Agriculture</i>	158	22	4	0	0	184
<i>Single Family</i>	24,122	1,808	39	0	0	25,969
<i>Other Residential</i>	5,187	1,318	523	32	0	7,060
<i>Government</i>	77	5	1	0	0	83
<i>Education</i>	96	5	0	0	0	101
<i>Industrial</i>	775	79	15	0	0	869
Merced						
<i>Education</i>	163	0	0	0	0	163
<i>Government</i>	171	0	0	0	0	171
<i>Commercial</i>	4,754	0	0	0	0	4,754
<i>Agriculture</i>	7,653	0	0	0	0	7,653
<i>Religion</i>	345	0	0	0	0	345
<i>Industrial</i>	1,022	0	0	0	0	1,022
<i>Single Family</i>	63,598	0	0	0	0	63,598
<i>Other Residential</i>	10,787	0	0	0	0	10,787
Modoc						
<i>Single Family</i>	3,740	0	0	0	0	3,740
<i>Industrial</i>	76	0	0	0	0	76
<i>Other Residential</i>	1,994	0	0	0	0	1,994
<i>Education</i>	20	0	0	0	0	20
<i>Religion</i>	36	0	0	0	0	36
<i>Agriculture</i>	449	0	0	0	0	449
<i>Government</i>	16	0	0	0	0	16

		# of Buildings					
		None	Slight	Moderate	Extensive	Complete	Total
Napa	<i>Commercial</i>	532	0	0	0	0	532
	<i>Commercial</i>	3,857	138	24	1	0	4,021
	<i>Agriculture</i>	335	11	3	0	0	349
	<i>Religion</i>	141	6	1	0	0	148
	<i>Single Family</i>	38,291	469	1	0	0	38,761
	<i>Other Residential</i>	6,489	359	125	5	0	6,978
	<i>Government</i>	99	3	0	0	0	103
	<i>Education</i>	129	3	1	0	0	132
Nevada	<i>Industrial</i>	1,303	53	11	1	0	1,367
	<i>Commercial</i>	2,834	1	0	0	0	2,835
	<i>Religion</i>	189	0	0	0	0	189
	<i>Government</i>	60	0	0	0	0	60
	<i>Agriculture</i>	132	0	0	0	0	132
	<i>Single Family</i>	43,280	0	0	0	0	43,280
	<i>Other Residential</i>	6,378	6	0	0	0	6,384
	<i>Education</i>	108	0	0	0	0	108
Placer	<i>Industrial</i>	1,161	0	0	0	0	1,161
	<i>Education</i>	231	0	0	0	0	231
	<i>Commercial</i>	8,525	12	1	0	0	8,538
	<i>Government</i>	377	0	0	0	0	377
	<i>Agriculture</i>	257	1	0	0	0	258
	<i>Religion</i>	381	1	0	0	0	382

	# of Buildings					Total
	None	Slight	Moderate	Extensive	Complete	
<i>Industrial</i>	2,697	6	0	0	0	2,703
<i>Other Residential</i>	14,815	27	1	0	0	14,843
<i>Single Family</i>	134,601	118	0	0	0	134,719
Plumas						
<i>Commercial</i>	1,215	0	0	0	0	1,215
<i>Religion</i>	30	0	0	0	0	30
<i>Agriculture</i>	84	0	0	0	0	84
<i>Other Residential</i>	5,032	0	0	0	0	5,032
<i>Single Family</i>	9,877	0	0	0	0	9,877
<i>Government</i>	45	0	0	0	0	45
<i>Education</i>	26	0	0	0	0	26
<i>Industrial</i>	184	0	0	0	0	184
Sacramento						
<i>Single Family</i>	385,866	969	5	0	0	386,840
<i>Industrial</i>	6,704	46	6	0	0	6,756
<i>Other Residential</i>	56,076	320	17	0	0	56,413
<i>Education</i>	827	2	0	0	0	829
<i>Agriculture</i>	617	3	1	0	0	621
<i>Religion</i>	1,675	23	3	0	0	1,702
<i>Government</i>	588	27	4	0	0	619
<i>Commercial</i>	25,995	266	33	1	0	26,295
San Francisco						
<i>Single Family</i>	150,543	152	8	0	0	150,703
<i>Other Residential</i>	44,279	236	14	0	0	44,529
<i>Government</i>	284	5	0	0	0	289

	# of Buildings					Total
	None	Slight	Moderate	Extensive	Complete	
<i>Education</i>	570	2	0	0	0	572
<i>Industrial</i>	3,835	23	2	0	0	3,860
<i>Commercial</i>	21,142	191	11	0	0	21,344
<i>Religion</i>	1,339	5	0	0	0	1,345
<i>Agriculture</i>	161	0	0	0	0	162
San Joaquin						
<i>Commercial</i>	12,841	22	1	0	0	12,864
<i>Agriculture</i>	751	2	0	0	0	753
<i>Religion</i>	876	1	0	0	0	877
<i>Government</i>	303	1	0	0	0	304
<i>Single Family</i>	188,499	395	29	0	0	188,922
<i>Other Residential</i>	21,735	66	4	0	0	21,805
<i>Education</i>	395	0	0	0	0	395
<i>Industrial</i>	4,921	7	0	0	0	4,928
San Mateo						
<i>Religion</i>	735	1	0	0	0	736
<i>Agriculture</i>	539	0	0	0	0	539
<i>Government</i>	298	1	0	0	0	299
<i>Commercial</i>	14,377	17	1	0	0	14,395
<i>Industrial</i>	4,468	4	0	0	0	4,472
<i>Other Residential</i>	22,431	21	1	0	0	22,453
<i>Single Family</i>	159,917	14	0	0	0	159,931
<i>Education</i>	489	0	0	0	0	489
Santa Clara						
<i>Other Residential</i>	59,143	16	0	0	0	59,160

	# of Buildings					Total
	None	Slight	Moderate	Extensive	Complete	
<i>Single Family</i>	427,217	2	0	0	0	427,219
<i>Government</i>	502	0	0	0	0	502
<i>Education</i>	1,173	0	0	0	0	1,173
<i>Industrial</i>	9,431	2	0	0	0	9,433
<i>Commercial</i>	35,459	10	0	0	0	35,469
<i>Religion</i>	1,540	0	0	0	0	1,540
<i>Agriculture</i>	895	0	0	0	0	895
Santa Cruz						
<i>Religion</i>	359	0	0	0	0	359
<i>Agriculture</i>	840	0	0	0	0	840
<i>Single Family</i>	68,870	0	0	0	0	68,870
<i>Other Residential</i>	14,892	0	0	0	0	14,892
<i>Industrial</i>	1,819	0	0	0	0	1,819
<i>Education</i>	225	0	0	0	0	225
<i>Commercial</i>	6,694	0	0	0	0	6,694
<i>Government</i>	127	0	0	0	0	127
Shasta						
<i>Agriculture</i>	3,224	10	1	0	0	3,235
<i>Religion</i>	66	0	0	0	0	66
<i>Commercial</i>	5,232	20	1	0	0	5,254
<i>Single Family</i>	51,731	84	0	0	0	51,815
<i>Industrial</i>	1,032	5	0	0	0	1,038
<i>Other Residential</i>	16,742	194	12	0	0	16,949
<i>Education</i>	136	0	0	0	0	136
<i>Government</i>	87	0	0	0	0	87

	# of Buildings					Total
	None	Slight	Moderate	Extensive	Complete	
Sierra						
Single Family	1,858	0	0	0	0	1,858
Other Residential	153	0	0	0	0	153
Industrial	66	0	0	0	0	66
Education	14	0	0	0	0	14
Commercial	141	0	0	0	0	141
Religion	12	0	0	0	0	12
Agriculture	7	0	0	0	0	7
Government	16	0	0	0	0	16
Siskiyou						
Commercial	1,591	0	0	0	0	1,591
Religion	127	0	0	0	0	127
Agriculture	201	0	0	0	0	201
Single Family	17,794	0	0	0	0	17,794
Industrial	480	0	0	0	0	480
Government	244	0	0	0	0	244
Other Residential	5,095	0	0	0	0	5,095
Education	76	0	0	0	0	76
Solano						
Religion	446	7	1	0	0	454
Agriculture	239	5	1	0	0	245
Government	150	2	0	0	0	152
Commercial	7,143	114	11	0	0	7,268
Single Family	120,214	753	0	0	0	120,968
Industrial	2,051	44	5	0	0	2,101

	# of Buildings					Total
	None	Slight	Moderate	Extensive	Complete	
<i>Other Residential</i>	12,093	206	18	0	0	12,317
<i>Education</i>	224	1	0	0	0	225
Sonoma						
<i>Other Residential</i>	23,971	934	125	2	0	25,033
<i>Government</i>	310	7	1	0	0	319
<i>Education</i>	363	3	1	0	0	367
<i>Religion</i>	555	18	3	0	0	576
<i>Commercial</i>	11,639	395	73	3	0	12,110
<i>Agriculture</i>	1,239	49	15	1	0	1,304
<i>Single Family</i>	140,363	1,662	3	0	0	142,028
<i>Industrial</i>	3,653	144	26	1	0	3,825
Stanislaus						
<i>Other Residential</i>	19,564	5	0	0	0	19,569
<i>Single Family</i>	142,724	0	0	0	0	142,724
<i>Education</i>	307	0	0	0	0	307
<i>Government</i>	680	0	0	0	0	680
<i>Industrial</i>	3,474	1	0	0	0	3,475
<i>Commercial</i>	10,366	3	0	0	0	10,369
<i>Religion</i>	456	0	0	0	0	456
<i>Agriculture</i>	1,239	0	0	0	0	1,239
Sutter						
<i>Other Residential</i>	2,861	222	29	0	0	3,113
<i>Industrial</i>	599	33	5	0	0	636
<i>Education</i>	61	1	0	0	0	62
<i>Government</i>	74	3	0	0	0	77

	# of Buildings					Total
	None	Slight	Moderate	Extensive	Complete	
<i>Single Family</i>	23,870	638	3	0	0	24,512
<i>Commercial</i>	1,951	88	13	0	0	2,052
<i>Agriculture</i>	1,018	74	28	5	0	1,125
<i>Religion</i>	147	6	1	0	0	154
Tehama						
<i>Religion</i>	108	1	0	0	0	110
<i>Agriculture</i>	296	3	0	0	0	299
<i>Industrial</i>	545	6	1	0	0	552
<i>Other Residential</i>	3,864	115	11	0	0	3,991
<i>Single Family</i>	21,109	111	2	0	0	21,222
<i>Education</i>	57	0	0	0	0	57
<i>Commercial</i>	1,254	15	1	0	0	1,270
<i>Government</i>	50	0	0	0	0	50
Trinity						
<i>Religion</i>	42	3	0	0	0	45
<i>Commercial</i>	969	33	3	0	0	1,005
<i>Agriculture</i>	4	0	0	0	0	4
<i>Single Family</i>	6,025	267	2	0	0	6,294
<i>Industrial</i>	51	6	1	0	0	58
<i>Other Residential</i>	1,008	226	116	4	0	1,354
<i>Education</i>	25	1	0	0	0	26
<i>Government</i>	8	0	0	0	0	8
Yolo						
<i>Industrial</i>	1,049	56	11	1	0	1,117
<i>Other Residential</i>	9,431	372	56	2	0	9,861

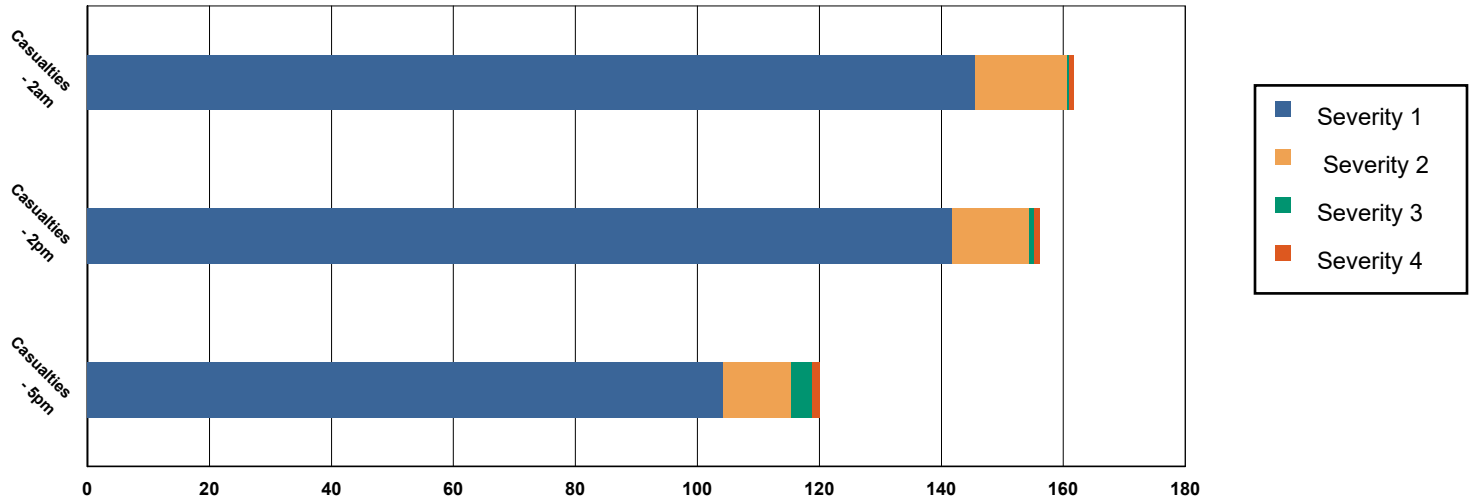
		# of Buildings					
		None	Slight	Moderate	Extensive	Complete	Total
	<i>Education</i>	129	2	0	0	0	131
	<i>Government</i>	106	4	1	0	0	111
	<i>Single Family</i>	41,626	958	5	0	0	42,589
	<i>Commercial</i>	4,015	177	31	2	0	4,225
	<i>Agriculture</i>	255	18	6	1	0	281
	<i>Religion</i>	231	10	1	0	0	242
Yuba							
	<i>Government</i>	590	1	0	0	0	591
	<i>Education</i>	54	0	0	0	0	54
	<i>Other Residential</i>	6,819	183	19	0	0	7,021
	<i>Religion</i>	96	1	0	0	0	98
	<i>Commercial</i>	1,165	30	4	0	0	1,199
	<i>Agriculture</i>	89	2	1	0	0	92
	<i>Single Family</i>	18,688	179	0	0	0	18,867
	<i>Industrial</i>	391	10	2	0	0	404
Total		4,162,875	32,571	8,831	2,594	183	4,207,055
Region Total		4,162,875	32,571	8,831	2,594	183	4,207,055

Totals only reflect data for those census tracts/blocks included in the user's study region and will reflect the entire county/state only if all of the census blocks for that county/states were selected at the time of study region creation.

Casualties Summary Report

November 08, 2024

Region Total Casualties



Injury Severity Level

Severity 1	Severity 2	Severity 3	Severity 4	Total
------------	------------	------------	------------	-------

California

Alameda

Casualties - 2am

	Severity 1	Severity 2	Severity 3	Severity 4	Total
Single Family	0	0	0	0	0
Hotels	0	0	0	0	0
Commuting	0	0	0	0	0
Educational	0	0	0	0	0
Industrial	0	0	0	0	0
Commercial	0	0	0	0	0
Other-Residential	1	0	0	0	1
Total Casualties - 2am	2	0	0	0	2

Casualties - 2pm

Industrial	0	0	0	0	0
Educational	0	0	0	0	0
Other-Residential	0	0	0	0	0
Single Family	0	0	0	0	0
Hotels	0	0	0	0	0
Commuting	0	0	0	0	0
Commercial	3	0	0	0	3

	Injury Severity Level				Total
	Severity 1	Severity 2	Severity 3	Severity 4	
California					
Alameda					
Total Casualties - 2pm	4	0	0	0	4
Casualties - 5pm					
<i>Commuting</i>	0	0	0	0	0
<i>Single Family</i>	0	0	0	0	0
<i>Commercial</i>	2	0	0	0	2
<i>Hotels</i>	0	0	0	0	0
<i>Educational</i>	0	0	0	0	0
<i>Industrial</i>	0	0	0	0	0
<i>Other-Residential</i>	0	0	0	0	1
Total Casualties - 5pm	3	0	0	0	3
Amador					
Casualties - 2am					
<i>Commercial</i>	0	0	0	0	0
<i>Other-Residential</i>	0	0	0	0	0
<i>Commuting</i>	0	0	0	0	0
<i>Educational</i>	0	0	0	0	0
<i>Single Family</i>	0	0	0	0	0
<i>Hotels</i>	0	0	0	0	0
<i>Industrial</i>	0	0	0	0	0
Total Casualties - 2am	0	0	0	0	0
Casualties - 2pm					
<i>Single Family</i>	0	0	0	0	0
<i>Hotels</i>	0	0	0	0	0
<i>Educational</i>	0	0	0	0	0
<i>Commuting</i>	0	0	0	0	0
<i>Commercial</i>	0	0	0	0	0
<i>Other-Residential</i>	0	0	0	0	0
<i>Industrial</i>	0	0	0	0	0
Total Casualties - 2pm	0	0	0	0	0
Casualties - 5pm					
<i>Commercial</i>	0	0	0	0	0
<i>Commuting</i>	0	0	0	0	0
<i>Other-Residential</i>	0	0	0	0	0
<i>Single Family</i>	0	0	0	0	0
<i>Educational</i>	0	0	0	0	0
<i>Hotels</i>	0	0	0	0	0
<i>Industrial</i>	0	0	0	0	0
Total Casualties - 5pm	0	0	0	0	0
Butte					
Casualties - 2am					
<i>Industrial</i>	0	0	0	0	0

	Injury Severity Level				Total
	Severity 1	Severity 2	Severity 3	Severity 4	
California					
Butte					
Casualties - 2am					
Commercial	0	0	0	0	0
Other-Residential	1	0	0	0	1
Single Family	0	0	0	0	0
Commuting	0	0	0	0	0
Educational	0	0	0	0	0
Hotels	0	0	0	0	0
Total Casualties - 2am	2	0	0	0	2
Casualties - 2pm					
Single Family	0	0	0	0	0
Educational	0	0	0	0	0
Commuting	0	0	0	0	0
Other-Residential	0	0	0	0	0
Hotels	0	0	0	0	0
Commercial	2	0	0	0	2
Industrial	0	0	0	0	0
Total Casualties - 2pm	3	0	0	0	3
Casualties - 5pm					
Industrial	0	0	0	0	0
Other-Residential	0	0	0	0	0
Single Family	0	0	0	0	0
Commercial	1	0	0	0	1
Commuting	0	0	0	0	0
Hotels	0	0	0	0	0
Educational	0	0	0	0	0
Total Casualties - 5pm	2	0	0	0	2
Calaveras					
Casualties - 2am					
Other-Residential	0	0	0	0	0
Commuting	0	0	0	0	0
Commercial	0	0	0	0	0
Single Family	0	0	0	0	0
Hotels	0	0	0	0	0
Educational	0	0	0	0	0
Industrial	0	0	0	0	0
Total Casualties - 2am	0	0	0	0	0
Casualties - 2pm					
Hotels	0	0	0	0	0
Single Family	0	0	0	0	0
Educational	0	0	0	0	0
Commuting	0	0	0	0	0
Commercial	0	0	0	0	0

	Injury Severity Level				Total
	Severity 1	Severity 2	Severity 3	Severity 4	
California					
Calaveras					
Casualties - 2pm					
<i>Industrial</i>	0	0	0	0	0
<i>Other-Residential</i>	0	0	0	0	0
Total Casualties - 2pm	0	0	0	0	0
Casualties - 5pm					
<i>Industrial</i>	0	0	0	0	0
<i>Commercial</i>	0	0	0	0	0
<i>Other-Residential</i>	0	0	0	0	0
<i>Educational</i>	0	0	0	0	0
<i>Hotels</i>	0	0	0	0	0
<i>Commuting</i>	0	0	0	0	0
<i>Single Family</i>	0	0	0	0	0
Total Casualties - 5pm	0	0	0	0	0
Colusa					
Casualties - 2am					
<i>Other-Residential</i>	2	0	0	0	2
<i>Industrial</i>	0	0	0	0	0
<i>Single Family</i>	2	0	0	0	2
<i>Commercial</i>	0	0	0	0	0
<i>Educational</i>	0	0	0	0	0
<i>Commuting</i>	0	0	0	0	0
<i>Hotels</i>	0	0	0	0	0
Total Casualties - 2am	3	0	0	0	4
Casualties - 2pm					
<i>Hotels</i>	0	0	0	0	0
<i>Single Family</i>	0	0	0	0	0
<i>Educational</i>	1	0	0	0	1
<i>Commercial</i>	4	0	0	0	5
<i>Commuting</i>	0	0	0	0	0
<i>Other-Residential</i>	1	0	0	0	1
<i>Industrial</i>	0	0	0	0	0
Total Casualties - 2pm	7	1	0	0	7
Casualties - 5pm					
<i>Industrial</i>	0	0	0	0	0
<i>Commercial</i>	3	0	0	0	4
<i>Other-Residential</i>	1	0	0	0	1
<i>Commuting</i>	0	0	0	0	0
<i>Single Family</i>	1	0	0	0	1
<i>Educational</i>	0	0	0	0	0
<i>Hotels</i>	0	0	0	0	0
Total Casualties - 5pm	5	0	0	0	5

	Injury Severity Level				Total
	Severity 1	Severity 2	Severity 3	Severity 4	
California					
Contra Costa					
Casualties - 2am					
<i>Educational</i>	0	0	0	0	0
<i>Hotels</i>	0	0	0	0	0
<i>Industrial</i>	0	0	0	0	0
<i>Other-Residential</i>	0	0	0	0	0
<i>Single Family</i>	0	0	0	0	0
<i>Commercial</i>	0	0	0	0	0
<i>Commuting</i>	0	0	0	0	0
Total Casualties - 2am	1	0	0	0	1
Casualties - 2pm					
<i>Other-Residential</i>	0	0	0	0	0
<i>Industrial</i>	0	0	0	0	0
<i>Hotels</i>	0	0	0	0	0
<i>Single Family</i>	0	0	0	0	0
<i>Educational</i>	0	0	0	0	0
<i>Commuting</i>	0	0	0	0	0
<i>Commercial</i>	1	0	0	0	1
Total Casualties - 2pm	2	0	0	0	2
Casualties - 5pm					
<i>Educational</i>	0	0	0	0	0
<i>Commuting</i>	0	0	0	0	0
<i>Single Family</i>	0	0	0	0	0
<i>Hotels</i>	0	0	0	0	0
<i>Industrial</i>	0	0	0	0	0
<i>Other-Residential</i>	0	0	0	0	0
<i>Commercial</i>	1	0	0	0	1
Total Casualties - 5pm	1	0	0	0	1
Del Norte					
Casualties - 2am					
<i>Hotels</i>	0	0	0	0	0
<i>Industrial</i>	0	0	0	0	0
<i>Commercial</i>	0	0	0	0	0
<i>Single Family</i>	0	0	0	0	0
<i>Other-Residential</i>	0	0	0	0	0
<i>Educational</i>	0	0	0	0	0
<i>Commuting</i>	0	0	0	0	0
Total Casualties - 2am	0	0	0	0	0
Casualties - 2pm					
<i>Commercial</i>	0	0	0	0	0
<i>Industrial</i>	0	0	0	0	0
<i>Other-Residential</i>	0	0	0	0	0
<i>Single Family</i>	0	0	0	0	0

	Injury Severity Level				Total
	Severity 1	Severity 2	Severity 3	Severity 4	
California					
Del Norte					
Casualties - 2pm					
<i>Educational</i>	0	0	0	0	0
<i>Commuting</i>	0	0	0	0	0
<i>Hotels</i>	0	0	0	0	0
Total Casualties - 2pm	0	0	0	0	0
Casualties - 5pm					
<i>Hotels</i>	0	0	0	0	0
<i>Educational</i>	0	0	0	0	0
<i>Industrial</i>	0	0	0	0	0
<i>Single Family</i>	0	0	0	0	0
<i>Other-Residential</i>	0	0	0	0	0
<i>Commuting</i>	0	0	0	0	0
<i>Commercial</i>	0	0	0	0	0
Total Casualties - 5pm	0	0	0	0	0
El Dorado					
Casualties - 2am					
<i>Commuting</i>	0	0	0	0	0
<i>Educational</i>	0	0	0	0	0
<i>Single Family</i>	0	0	0	0	0
<i>Hotels</i>	0	0	0	0	0
<i>Other-Residential</i>	0	0	0	0	0
<i>Industrial</i>	0	0	0	0	0
<i>Commercial</i>	0	0	0	0	0
Total Casualties - 2am	0	0	0	0	0
Casualties - 2pm					
<i>Industrial</i>	0	0	0	0	0
<i>Other-Residential</i>	0	0	0	0	0
<i>Single Family</i>	0	0	0	0	0
<i>Hotels</i>	0	0	0	0	0
<i>Educational</i>	0	0	0	0	0
<i>Commuting</i>	0	0	0	0	0
<i>Commercial</i>	0	0	0	0	0
Total Casualties - 2pm	0	0	0	0	0
Casualties - 5pm					
<i>Commercial</i>	0	0	0	0	0
<i>Commuting</i>	0	0	0	0	0
<i>Single Family</i>	0	0	0	0	0
<i>Educational</i>	0	0	0	0	0
<i>Hotels</i>	0	0	0	0	0
<i>Industrial</i>	0	0	0	0	0
<i>Other-Residential</i>	0	0	0	0	0

	Injury Severity Level				Total
	Severity 1	Severity 2	Severity 3	Severity 4	
California					
El Dorado					
Total Casualties - 5pm	0	0	0	0	0
Glenn					
Casualties - 2am					
<i>Hotels</i>	0	0	0	0	0
<i>Educational</i>	0	0	0	0	0
<i>Industrial</i>	0	0	0	0	0
<i>Other-Residential</i>	1	0	0	0	1
<i>Commercial</i>	0	0	0	0	0
<i>Commuting</i>	0	0	0	0	0
<i>Single Family</i>	0	0	0	0	0
Total Casualties - 2am	2	0	0	0	2
Casualties - 2pm					
<i>Industrial</i>	0	0	0	0	0
<i>Other-Residential</i>	0	0	0	0	0
<i>Commuting</i>	0	0	0	0	0
<i>Commercial</i>	4	0	0	0	4
<i>Hotels</i>	0	0	0	0	0
<i>Single Family</i>	0	0	0	0	0
<i>Educational</i>	0	0	0	0	0
Total Casualties - 2pm	5	0	0	0	5
Casualties - 5pm					
<i>Educational</i>	0	0	0	0	0
<i>Commuting</i>	0	0	0	0	0
<i>Hotels</i>	0	0	0	0	0
<i>Single Family</i>	0	0	0	0	0
<i>Industrial</i>	0	0	0	0	0
<i>Commercial</i>	3	0	0	0	3
<i>Other-Residential</i>	0	0	0	0	0
Total Casualties - 5pm	3	0	0	0	4
Humboldt					
Casualties - 2am					
<i>Single Family</i>	1	0	0	0	1
<i>Commercial</i>	0	0	0	0	0
<i>Commuting</i>	0	0	0	0	0
<i>Hotels</i>	0	0	0	0	0
<i>Educational</i>	0	0	0	0	0
<i>Industrial</i>	0	0	0	0	0
<i>Other-Residential</i>	1	0	0	0	1
Total Casualties - 2am	2	0	0	0	2
Casualties - 2pm					
<i>Industrial</i>	0	0	0	0	0

	Injury Severity Level				Total
	Severity 1	Severity 2	Severity 3	Severity 4	
California					
Humboldt					
Casualties - 2pm					
<i>Hotels</i>	0	0	0	0	0
<i>Commercial</i>	1	0	0	0	1
<i>Other-Residential</i>	0	0	0	0	0
<i>Single Family</i>	0	0	0	0	0
<i>Educational</i>	0	0	0	0	0
<i>Commuting</i>	0	0	0	0	0
Total Casualties - 2pm	2	0	0	0	3
Casualties - 5pm					
<i>Commercial</i>	1	0	0	0	1
<i>Other-Residential</i>	0	0	0	0	0
<i>Commuting</i>	0	0	0	0	0
<i>Hotels</i>	0	0	0	0	0
<i>Single Family</i>	0	0	0	0	0
<i>Educational</i>	0	0	0	0	0
<i>Industrial</i>	0	0	0	0	0
Total Casualties - 5pm	2	0	0	0	2
Lake					
Casualties - 2am					
<i>Hotels</i>	0	0	0	0	0
<i>Industrial</i>	0	0	0	0	0
<i>Other-Residential</i>	93	13	0	1	107
<i>Commuting</i>	0	0	0	0	0
<i>Educational</i>	0	0	0	0	0
<i>Single Family</i>	8	0	0	0	8
<i>Commercial</i>	0	0	0	0	0
Total Casualties - 2am	102	13	0	1	116
Casualties - 2pm					
<i>Industrial</i>	1	0	0	0	2
<i>Single Family</i>	3	0	0	0	3
<i>Commercial</i>	20	3	0	0	24
<i>Other-Residential</i>	34	5	0	0	40
<i>Hotels</i>	0	0	0	0	0
<i>Educational</i>	2	0	0	0	3
<i>Commuting</i>	0	0	0	0	0
Total Casualties - 2pm	61	8	1	1	71
Casualties - 5pm					
<i>Other-Residential</i>	33	5	0	0	38
<i>Industrial</i>	1	0	0	0	1
<i>Commercial</i>	13	2	0	0	15
<i>Educational</i>	0	0	0	0	0
<i>Commuting</i>	1	1	2	0	5

	Injury Severity Level				Total
	Severity 1	Severity 2	Severity 3	Severity 4	
California					
Lake					
Casualties - 5pm					
Single Family	3	0	0	0	3
Hotels	0	0	0	0	0
Total Casualties - 5pm	51	8	3	1	63
Lassen					
Casualties - 2am					
Hotels	0	0	0	0	0
Industrial	0	0	0	0	0
Educational	0	0	0	0	0
Single Family	0	0	0	0	0
Commercial	0	0	0	0	0
Commuting	0	0	0	0	0
Other-Residential	0	0	0	0	0
Total Casualties - 2am	0	0	0	0	0
Casualties - 2pm					
Industrial	0	0	0	0	0
Other-Residential	0	0	0	0	0
Commercial	0	0	0	0	0
Commuting	0	0	0	0	0
Single Family	0	0	0	0	0
Hotels	0	0	0	0	0
Educational	0	0	0	0	0
Total Casualties - 2pm	0	0	0	0	0
Casualties - 5pm					
Industrial	0	0	0	0	0
Single Family	0	0	0	0	0
Commercial	0	0	0	0	0
Hotels	0	0	0	0	0
Other-Residential	0	0	0	0	0
Commuting	0	0	0	0	0
Educational	0	0	0	0	0
Total Casualties - 5pm	0	0	0	0	0
Marin					
Casualties - 2am					
Commercial	0	0	0	0	0
Commuting	0	0	0	0	0
Other-Residential	0	0	0	0	0
Educational	0	0	0	0	0
Single Family	0	0	0	0	0
Hotels	0	0	0	0	0
Industrial	0	0	0	0	0

	Injury Severity Level				Total
	Severity 1	Severity 2	Severity 3	Severity 4	
California					
Marin					
Total Casualties - 2am	0	0	0	0	0
Casualties - 2pm					
<i>Hotels</i>	0	0	0	0	0
<i>Commuting</i>	0	0	0	0	0
<i>Educational</i>	0	0	0	0	0
<i>Industrial</i>	0	0	0	0	0
<i>Other-Residential</i>	0	0	0	0	0
<i>Commercial</i>	0	0	0	0	0
<i>Single Family</i>	0	0	0	0	0
Total Casualties - 2pm	0	0	0	0	0
Casualties - 5pm					
<i>Commuting</i>	0	0	0	0	0
<i>Commercial</i>	0	0	0	0	0
<i>Other-Residential</i>	0	0	0	0	0
<i>Single Family</i>	0	0	0	0	0
<i>Industrial</i>	0	0	0	0	0
<i>Educational</i>	0	0	0	0	0
<i>Hotels</i>	0	0	0	0	0
Total Casualties - 5pm	0	0	0	0	0
Mendocino					
Casualties - 2am					
<i>Educational</i>	0	0	0	0	0
<i>Hotels</i>	0	0	0	0	0
<i>Commuting</i>	0	0	0	0	0
<i>Industrial</i>	0	0	0	0	0
<i>Other-Residential</i>	5	0	0	0	5
<i>Single Family</i>	3	0	0	0	3
<i>Commercial</i>	0	0	0	0	0
Total Casualties - 2am	8	0	0	0	8
Casualties - 2pm					
<i>Industrial</i>	0	0	0	0	0
<i>Other-Residential</i>	2	0	0	0	2
<i>Commercial</i>	3	0	0	0	3
<i>Single Family</i>	1	0	0	0	1
<i>Commuting</i>	0	0	0	0	0
<i>Hotels</i>	0	0	0	0	0
<i>Educational</i>	1	0	0	0	1
Total Casualties - 2pm	7	0	0	0	7
Casualties - 5pm					
<i>Hotels</i>	0	0	0	0	0
<i>Single Family</i>	1	0	0	0	1

	Injury Severity Level				Total
	Severity 1	Severity 2	Severity 3	Severity 4	
California					
Mendocino					
Casualties - 5pm					
<i>Educational</i>	0	0	0	0	0
<i>Commuting</i>	0	0	0	0	1
<i>Commercial</i>	2	0	0	0	2
<i>Other-Residential</i>	2	0	0	0	2
<i>Industrial</i>	0	0	0	0	0
Total Casualties - 5pm	5	1	0	0	6
Merced					
Casualties - 2am					
<i>Hotels</i>	0	0	0	0	0
<i>Industrial</i>	0	0	0	0	0
<i>Commercial</i>	0	0	0	0	0
<i>Single Family</i>	0	0	0	0	0
<i>Other-Residential</i>	0	0	0	0	0
<i>Educational</i>	0	0	0	0	0
<i>Commuting</i>	0	0	0	0	0
Total Casualties - 2am	0	0	0	0	0
Casualties - 2pm					
<i>Other-Residential</i>	0	0	0	0	0
<i>Industrial</i>	0	0	0	0	0
<i>Commercial</i>	0	0	0	0	0
<i>Commuting</i>	0	0	0	0	0
<i>Hotels</i>	0	0	0	0	0
<i>Educational</i>	0	0	0	0	0
<i>Single Family</i>	0	0	0	0	0
Total Casualties - 2pm	0	0	0	0	0
Casualties - 5pm					
<i>Industrial</i>	0	0	0	0	0
<i>Hotels</i>	0	0	0	0	0
<i>Educational</i>	0	0	0	0	0
<i>Commuting</i>	0	0	0	0	0
<i>Single Family</i>	0	0	0	0	0
<i>Commercial</i>	0	0	0	0	0
<i>Other-Residential</i>	0	0	0	0	0
Total Casualties - 5pm	0	0	0	0	0
Modoc					
Casualties - 2am					
<i>Industrial</i>	0	0	0	0	0
<i>Other-Residential</i>	0	0	0	0	0
<i>Commuting</i>	0	0	0	0	0
<i>Commercial</i>	0	0	0	0	0
<i>Single Family</i>	0	0	0	0	0

	Injury Severity Level				Total
	Severity 1	Severity 2	Severity 3	Severity 4	
California					
Modoc					
Casualties - 2am					
<i>Hotels</i>	0	0	0	0	0
<i>Educational</i>	0	0	0	0	0
Total Casualties - 2am	0	0	0	0	0
Casualties - 2pm					
<i>Commercial</i>	0	0	0	0	0
<i>Commuting</i>	0	0	0	0	0
<i>Educational</i>	0	0	0	0	0
<i>Single Family</i>	0	0	0	0	0
<i>Other-Residential</i>	0	0	0	0	0
<i>Hotels</i>	0	0	0	0	0
<i>Industrial</i>	0	0	0	0	0
Total Casualties - 2pm	0	0	0	0	0
Casualties - 5pm					
<i>Industrial</i>	0	0	0	0	0
<i>Educational</i>	0	0	0	0	0
<i>Commuting</i>	0	0	0	0	0
<i>Other-Residential</i>	0	0	0	0	0
<i>Hotels</i>	0	0	0	0	0
<i>Single Family</i>	0	0	0	0	0
<i>Commercial</i>	0	0	0	0	0
Total Casualties - 5pm	0	0	0	0	0
Napa					
Casualties - 2am					
<i>Commercial</i>	0	0	0	0	0
<i>Other-Residential</i>	2	0	0	0	2
<i>Educational</i>	0	0	0	0	0
<i>Single Family</i>	1	0	0	0	1
<i>Commuting</i>	0	0	0	0	0
<i>Hotels</i>	0	0	0	0	0
<i>Industrial</i>	0	0	0	0	0
Total Casualties - 2am	2	0	0	0	2
Casualties - 2pm					
<i>Educational</i>	0	0	0	0	0
<i>Hotels</i>	0	0	0	0	0
<i>Commuting</i>	0	0	0	0	0
<i>Industrial</i>	0	0	0	0	0
<i>Other-Residential</i>	0	0	0	0	1
<i>Single Family</i>	0	0	0	0	0
<i>Commercial</i>	2	0	0	0	2
Total Casualties - 2pm	3	0	0	0	4

Injury Severity Level

Severity 1 Severity 2 Severity 3 Severity 4 Total

California

Napa

Casualties - 5pm

<i>Commercial</i>	1	0	0	0	1
<i>Single Family</i>	0	0	0	0	0
<i>Other-Residential</i>	1	0	0	0	1
<i>Commuting</i>	0	0	0	0	0
<i>Industrial</i>	0	0	0	0	0
<i>Educational</i>	0	0	0	0	0
<i>Hotels</i>	0	0	0	0	0
Total Casualties - 5pm	2	0	0	0	2

Nevada

Casualties - 2am

<i>Single Family</i>	0	0	0	0	0
<i>Commercial</i>	0	0	0	0	0
<i>Commuting</i>	0	0	0	0	0
<i>Hotels</i>	0	0	0	0	0
<i>Educational</i>	0	0	0	0	0
<i>Industrial</i>	0	0	0	0	0
<i>Other-Residential</i>	0	0	0	0	0
Total Casualties - 2am	0	0	0	0	0

Casualties - 2pm

<i>Hotels</i>	0	0	0	0	0
<i>Industrial</i>	0	0	0	0	0
<i>Commercial</i>	0	0	0	0	0
<i>Single Family</i>	0	0	0	0	0
<i>Other-Residential</i>	0	0	0	0	0
<i>Educational</i>	0	0	0	0	0
<i>Commuting</i>	0	0	0	0	0
Total Casualties - 2pm	0	0	0	0	0

Casualties - 5pm

<i>Commuting</i>	0	0	0	0	0
<i>Hotels</i>	0	0	0	0	0
<i>Other-Residential</i>	0	0	0	0	0
<i>Educational</i>	0	0	0	0	0
<i>Single Family</i>	0	0	0	0	0
<i>Commercial</i>	0	0	0	0	0
<i>Industrial</i>	0	0	0	0	0
Total Casualties - 5pm	0	0	0	0	0

Placer

Casualties - 2am

<i>Hotels</i>	0	0	0	0	0
<i>Educational</i>	0	0	0	0	0
<i>Industrial</i>	0	0	0	0	0

	Injury Severity Level				Total
	Severity 1	Severity 2	Severity 3	Severity 4	
California					
Placer					
Casualties - 2am					
Other-Residential	0	0	0	0	0
Commercial	0	0	0	0	0
Single Family	0	0	0	0	0
Commuting	0	0	0	0	0
Total Casualties - 2am	0	0	0	0	0
Casualties - 2pm					
Other-Residential	0	0	0	0	0
Industrial	0	0	0	0	0
Commercial	0	0	0	0	0
Single Family	0	0	0	0	0
Educational	0	0	0	0	0
Commuting	0	0	0	0	0
Hotels	0	0	0	0	0
Total Casualties - 2pm	0	0	0	0	0
Casualties - 5pm					
Single Family	0	0	0	0	0
Hotels	0	0	0	0	0
Commuting	0	0	0	0	0
Educational	0	0	0	0	0
Commercial	0	0	0	0	0
Industrial	0	0	0	0	0
Other-Residential	0	0	0	0	0
Total Casualties - 5pm	0	0	0	0	0
Plumas					
Casualties - 2am					
Educational	0	0	0	0	0
Single Family	0	0	0	0	0
Commuting	0	0	0	0	0
Hotels	0	0	0	0	0
Industrial	0	0	0	0	0
Other-Residential	0	0	0	0	0
Commercial	0	0	0	0	0
Total Casualties - 2am	0	0	0	0	0
Casualties - 2pm					
Industrial	0	0	0	0	0
Single Family	0	0	0	0	0
Commercial	0	0	0	0	0
Other-Residential	0	0	0	0	0
Hotels	0	0	0	0	0
Educational	0	0	0	0	0
Commuting	0	0	0	0	0

	Injury Severity Level				Total
	Severity 1	Severity 2	Severity 3	Severity 4	
California					
Plumas					
Total Casualties - 2pm	0	0	0	0	0
Casualties - 5pm					
<i>Other-Residential</i>	0	0	0	0	0
<i>Single Family</i>	0	0	0	0	0
<i>Educational</i>	0	0	0	0	0
<i>Hotels</i>	0	0	0	0	0
<i>Commuting</i>	0	0	0	0	0
<i>Commercial</i>	0	0	0	0	0
<i>Industrial</i>	0	0	0	0	0
Total Casualties - 5pm	0	0	0	0	0
Sacramento					
Casualties - 2am					
<i>Industrial</i>	0	0	0	0	0
<i>Other-Residential</i>	2	0	0	0	2
<i>Commercial</i>	0	0	0	0	0
<i>Single Family</i>	1	0	0	0	1
<i>Hotels</i>	0	0	0	0	0
<i>Commuting</i>	0	0	0	0	0
<i>Educational</i>	0	0	0	0	0
Total Casualties - 2am	3	0	0	0	3
Casualties - 2pm					
<i>Other-Residential</i>	1	0	0	0	1
<i>Commuting</i>	0	0	0	0	0
<i>Single Family</i>	0	0	0	0	0
<i>Commercial</i>	14	1	0	0	15
<i>Hotels</i>	0	0	0	0	0
<i>Educational</i>	0	0	0	0	0
<i>Industrial</i>	0	0	0	0	1
Total Casualties - 2pm	16	1	0	0	17
Casualties - 5pm					
<i>Industrial</i>	0	0	0	0	0
<i>Educational</i>	0	0	0	0	0
<i>Hotels</i>	0	0	0	0	0
<i>Commercial</i>	8	0	0	0	8
<i>Commuting</i>	0	0	0	0	0
<i>Other-Residential</i>	1	0	0	0	1
<i>Single Family</i>	1	0	0	0	1
Total Casualties - 5pm	9	0	0	0	9
San Francisco					
Casualties - 2am					
<i>Industrial</i>	0	0	0	0	0

Injury Severity Level

Severity 1 Severity 2 Severity 3 Severity 4 Total

California

San Francisco

Casualties - 2am

<i>Hotels</i>	0	0	0	0	0
<i>Commercial</i>	0	0	0	0	0
<i>Other-Residential</i>	3	0	0	0	3
<i>Commuting</i>	0	0	0	0	0
<i>Educational</i>	0	0	0	0	0
<i>Single Family</i>	0	0	0	0	0
Total Casualties - 2am	3	0	0	0	3

Casualties - 2pm

<i>Commercial</i>	4	0	0	0	4
<i>Industrial</i>	0	0	0	0	0
<i>Other-Residential</i>	1	0	0	0	1
<i>Single Family</i>	0	0	0	0	0
<i>Hotels</i>	0	0	0	0	0
<i>Commuting</i>	0	0	0	0	0
<i>Educational</i>	0	0	0	0	0
Total Casualties - 2pm	5	0	0	0	6

Casualties - 5pm

<i>Educational</i>	0	0	0	0	0
<i>Hotels</i>	0	0	0	0	0
<i>Industrial</i>	0	0	0	0	0
<i>Commuting</i>	0	0	0	0	0
<i>Commercial</i>	2	0	0	0	2
<i>Other-Residential</i>	1	0	0	0	1
<i>Single Family</i>	0	0	0	0	0
Total Casualties - 5pm	3	0	0	0	4

San Joaquin

Casualties - 2am

<i>Educational</i>	0	0	0	0	0
<i>Commuting</i>	0	0	0	0	0
<i>Hotels</i>	0	0	0	0	0
<i>Commercial</i>	0	0	0	0	0
<i>Single Family</i>	1	0	0	0	1
<i>Industrial</i>	0	0	0	0	0
<i>Other-Residential</i>	0	0	0	0	0
Total Casualties - 2am	1	0	0	0	1

Casualties - 2pm

<i>Industrial</i>	0	0	0	0	0
<i>Other-Residential</i>	0	0	0	0	0
<i>Educational</i>	0	0	0	0	0
<i>Single Family</i>	0	0	0	0	0
<i>Hotels</i>	0	0	0	0	0

	Injury Severity Level				Total
	Severity 1	Severity 2	Severity 3	Severity 4	
California					
San Joaquin					
Casualties - 2pm					
<i>Commuting</i>	0	0	0	0	0
<i>Commercial</i>	0	0	0	0	0
Total Casualties - 2pm	1	0	0	0	1
Casualties - 5pm					
<i>Commuting</i>	0	0	0	0	0
<i>Single Family</i>	0	0	0	0	0
<i>Educational</i>	0	0	0	0	0
<i>Hotels</i>	0	0	0	0	0
<i>Industrial</i>	0	0	0	0	0
<i>Commercial</i>	0	0	0	0	0
<i>Other-Residential</i>	0	0	0	0	0
Total Casualties - 5pm	1	0	0	0	1
San Mateo					
Casualties - 2am					
<i>Industrial</i>	0	0	0	0	0
<i>Other-Residential</i>	0	0	0	0	0
<i>Single Family</i>	0	0	0	0	0
<i>Commercial</i>	0	0	0	0	0
<i>Educational</i>	0	0	0	0	0
<i>Commuting</i>	0	0	0	0	0
<i>Hotels</i>	0	0	0	0	0
Total Casualties - 2am	0	0	0	0	0
Casualties - 2pm					
<i>Other-Residential</i>	0	0	0	0	0
<i>Single Family</i>	0	0	0	0	0
<i>Commuting</i>	0	0	0	0	0
<i>Commercial</i>	0	0	0	0	0
<i>Educational</i>	0	0	0	0	0
<i>Hotels</i>	0	0	0	0	0
<i>Industrial</i>	0	0	0	0	0
Total Casualties - 2pm	1	0	0	0	1
Casualties - 5pm					
<i>Commercial</i>	0	0	0	0	0
<i>Industrial</i>	0	0	0	0	0
<i>Other-Residential</i>	0	0	0	0	0
<i>Single Family</i>	0	0	0	0	0
<i>Educational</i>	0	0	0	0	0
<i>Commuting</i>	0	0	0	0	0
<i>Hotels</i>	0	0	0	0	0
Total Casualties - 5pm	0	0	0	0	0

	Injury Severity Level				Total
	Severity 1	Severity 2	Severity 3	Severity 4	
California					
Santa Clara					
Casualties - 2am					
<i>Commuting</i>	0	0	0	0	0
<i>Educational</i>	0	0	0	0	0
<i>Single Family</i>	0	0	0	0	0
<i>Hotels</i>	0	0	0	0	0
<i>Industrial</i>	0	0	0	0	0
<i>Commercial</i>	0	0	0	0	0
<i>Other-Residential</i>	0	0	0	0	0
Total Casualties - 2am	0	0	0	0	0
Casualties - 2pm					
<i>Industrial</i>	0	0	0	0	0
<i>Commercial</i>	0	0	0	0	0
<i>Single Family</i>	0	0	0	0	0
<i>Commuting</i>	0	0	0	0	0
<i>Hotels</i>	0	0	0	0	0
<i>Other-Residential</i>	0	0	0	0	0
<i>Educational</i>	0	0	0	0	0
Total Casualties - 2pm	0	0	0	0	0
Casualties - 5pm					
<i>Industrial</i>	0	0	0	0	0
<i>Hotels</i>	0	0	0	0	0
<i>Other-Residential</i>	0	0	0	0	0
<i>Commercial</i>	0	0	0	0	0
<i>Commuting</i>	0	0	0	0	0
<i>Single Family</i>	0	0	0	0	0
<i>Educational</i>	0	0	0	0	0
Total Casualties - 5pm	0	0	0	0	0
Santa Cruz					
Casualties - 2am					
<i>Hotels</i>	0	0	0	0	0
<i>Educational</i>	0	0	0	0	0
<i>Industrial</i>	0	0	0	0	0
<i>Other-Residential</i>	0	0	0	0	0
<i>Single Family</i>	0	0	0	0	0
<i>Commercial</i>	0	0	0	0	0
<i>Commuting</i>	0	0	0	0	0
Total Casualties - 2am	0	0	0	0	0
Casualties - 2pm					
<i>Industrial</i>	0	0	0	0	0
<i>Other-Residential</i>	0	0	0	0	0
<i>Commercial</i>	0	0	0	0	0
<i>Commuting</i>	0	0	0	0	0

	Injury Severity Level				Total
	Severity 1	Severity 2	Severity 3	Severity 4	
California					
Santa Cruz					
Casualties - 2pm					
<i>Educational</i>	0	0	0	0	0
<i>Single Family</i>	0	0	0	0	0
<i>Hotels</i>	0	0	0	0	0
Total Casualties - 2pm	0	0	0	0	0
Casualties - 5pm					
<i>Industrial</i>	0	0	0	0	0
<i>Other-Residential</i>	0	0	0	0	0
<i>Commercial</i>	0	0	0	0	0
<i>Commuting</i>	0	0	0	0	0
<i>Single Family</i>	0	0	0	0	0
<i>Hotels</i>	0	0	0	0	0
<i>Educational</i>	0	0	0	0	0
Total Casualties - 5pm	0	0	0	0	0
Shasta					
Casualties - 2am					
<i>Other-Residential</i>	0	0	0	0	0
<i>Single Family</i>	0	0	0	0	0
<i>Commuting</i>	0	0	0	0	0
<i>Commercial</i>	0	0	0	0	0
<i>Hotels</i>	0	0	0	0	0
<i>Educational</i>	0	0	0	0	0
<i>Industrial</i>	0	0	0	0	0
Total Casualties - 2am	0	0	0	0	0
Casualties - 2pm					
<i>Commuting</i>	0	0	0	0	0
<i>Educational</i>	0	0	0	0	0
<i>Single Family</i>	0	0	0	0	0
<i>Hotels</i>	0	0	0	0	0
<i>Other-Residential</i>	0	0	0	0	0
<i>Industrial</i>	0	0	0	0	0
<i>Commercial</i>	0	0	0	0	0
Total Casualties - 2pm	0	0	0	0	0
Casualties - 5pm					
<i>Hotels</i>	0	0	0	0	0
<i>Commercial</i>	0	0	0	0	0
<i>Commuting</i>	0	0	0	0	0
<i>Single Family</i>	0	0	0	0	0
<i>Educational</i>	0	0	0	0	0
<i>Industrial</i>	0	0	0	0	0
<i>Other-Residential</i>	0	0	0	0	0

	Injury Severity Level				Total
	Severity 1	Severity 2	Severity 3	Severity 4	
California					
Shasta					
Total Casualties - 5pm	0	0	0	0	0
Sierra					
Casualties - 2am					
<i>Other-Residential</i>	0	0	0	0	0
<i>Commercial</i>	0	0	0	0	0
<i>Commuting</i>	0	0	0	0	0
<i>Hotels</i>	0	0	0	0	0
<i>Single Family</i>	0	0	0	0	0
<i>Educational</i>	0	0	0	0	0
<i>Industrial</i>	0	0	0	0	0
Total Casualties - 2am	0	0	0	0	0
Casualties - 2pm					
<i>Hotels</i>	0	0	0	0	0
<i>Educational</i>	0	0	0	0	0
<i>Industrial</i>	0	0	0	0	0
<i>Other-Residential</i>	0	0	0	0	0
<i>Commuting</i>	0	0	0	0	0
<i>Single Family</i>	0	0	0	0	0
<i>Commercial</i>	0	0	0	0	0
Total Casualties - 2pm	0	0	0	0	0
Casualties - 5pm					
<i>Educational</i>	0	0	0	0	0
<i>Hotels</i>	0	0	0	0	0
<i>Commuting</i>	0	0	0	0	0
<i>Industrial</i>	0	0	0	0	0
<i>Other-Residential</i>	0	0	0	0	0
<i>Commercial</i>	0	0	0	0	0
<i>Single Family</i>	0	0	0	0	0
Total Casualties - 5pm	0	0	0	0	0
Siskiyou					
Casualties - 2am					
<i>Commuting</i>	0	0	0	0	0
<i>Educational</i>	0	0	0	0	0
<i>Hotels</i>	0	0	0	0	0
<i>Single Family</i>	0	0	0	0	0
<i>Industrial</i>	0	0	0	0	0
<i>Other-Residential</i>	0	0	0	0	0
<i>Commercial</i>	0	0	0	0	0
Total Casualties - 2am	0	0	0	0	0
Casualties - 2pm					
<i>Industrial</i>	0	0	0	0	0

	Injury Severity Level				Total
	Severity 1	Severity 2	Severity 3	Severity 4	
California					
Siskiyou					
Casualties - 2pm					
Single Family	0	0	0	0	0
Other-Residential	0	0	0	0	0
Commercial	0	0	0	0	0
Educational	0	0	0	0	0
Commuting	0	0	0	0	0
Hotels	0	0	0	0	0
Total Casualties - 2pm	0	0	0	0	0
Casualties - 5pm					
Hotels	0	0	0	0	0
Industrial	0	0	0	0	0
Commercial	0	0	0	0	0
Other-Residential	0	0	0	0	0
Single Family	0	0	0	0	0
Educational	0	0	0	0	0
Commuting	0	0	0	0	0
Total Casualties - 5pm	0	0	0	0	0
Solano					
Casualties - 2am					
Industrial	0	0	0	0	0
Other-Residential	1	0	0	0	1
Commercial	0	0	0	0	0
Educational	0	0	0	0	0
Commuting	0	0	0	0	0
Single Family	1	0	0	0	1
Hotels	0	0	0	0	0
Total Casualties - 2am	2	0	0	0	2
Casualties - 2pm					
Single Family	0	0	0	0	0
Other-Residential	0	0	0	0	0
Commercial	1	0	0	0	1
Educational	0	0	0	0	0
Commuting	0	0	0	0	0
Hotels	0	0	0	0	0
Industrial	0	0	0	0	0
Total Casualties - 2pm	2	0	0	0	2
Casualties - 5pm					
Commercial	1	0	0	0	1
Other-Residential	0	0	0	0	0
Single Family	0	0	0	0	0
Educational	0	0	0	0	0
Commuting	0	0	0	0	0

	Injury Severity Level				Total
	Severity 1	Severity 2	Severity 3	Severity 4	
California					
Solano					
Casualties - 5pm					
<i>Hotels</i>	0	0	0	0	0
<i>Industrial</i>	0	0	0	0	0
Total Casualties - 5pm	2	0	0	0	2
Sonoma					
Casualties - 2am					
<i>Single Family</i>	2	0	0	0	2
<i>Other-Residential</i>	3	0	0	0	3
<i>Commercial</i>	0	0	0	0	0
<i>Commuting</i>	0	0	0	0	0
<i>Hotels</i>	0	0	0	0	0
<i>Educational</i>	0	0	0	0	0
<i>Industrial</i>	0	0	0	0	0
Total Casualties - 2am	6	0	0	0	6
Casualties - 2pm					
<i>Single Family</i>	1	0	0	0	1
<i>Commuting</i>	0	0	0	0	0
<i>Educational</i>	2	0	0	0	2
<i>Hotels</i>	0	0	0	0	0
<i>Industrial</i>	1	0	0	0	1
<i>Other-Residential</i>	1	0	0	0	1
<i>Commercial</i>	5	0	0	0	6
Total Casualties - 2pm	10	1	0	0	11
Casualties - 5pm					
<i>Single Family</i>	1	0	0	0	1
<i>Commercial</i>	4	0	0	0	4
<i>Commuting</i>	0	0	0	0	0
<i>Hotels</i>	0	0	0	0	0
<i>Educational</i>	1	0	0	0	1
<i>Industrial</i>	1	0	0	0	1
<i>Other-Residential</i>	1	0	0	0	1
Total Casualties - 5pm	7	0	0	0	7
Stanislaus					
Casualties - 2am					
<i>Hotels</i>	0	0	0	0	0
<i>Industrial</i>	0	0	0	0	0
<i>Commercial</i>	0	0	0	0	0
<i>Single Family</i>	0	0	0	0	0
<i>Other-Residential</i>	0	0	0	0	0
<i>Commuting</i>	0	0	0	0	0
<i>Educational</i>	0	0	0	0	0

	Injury Severity Level				Total
	Severity 1	Severity 2	Severity 3	Severity 4	
California					
Stanislaus					
Total Casualties - 2am	0	0	0	0	0
Casualties - 2pm					
Industrial	0	0	0	0	0
Other-Residential	0	0	0	0	0
Commercial	0	0	0	0	0
Commuting	0	0	0	0	0
Educational	0	0	0	0	0
Single Family	0	0	0	0	0
Hotels	0	0	0	0	0
Total Casualties - 2pm	0	0	0	0	0
Casualties - 5pm					
Industrial	0	0	0	0	0
Other-Residential	0	0	0	0	0
Commuting	0	0	0	0	0
Single Family	0	0	0	0	0
Commercial	0	0	0	0	0
Hotels	0	0	0	0	0
Educational	0	0	0	0	0
Total Casualties - 5pm	0	0	0	0	0
Sutter					
Casualties - 2am					
Educational	0	0	0	0	0
Commuting	0	0	0	0	0
Hotels	0	0	0	0	0
Industrial	0	0	0	0	0
Other-Residential	1	0	0	0	1
Single Family	1	0	0	0	1
Commercial	0	0	0	0	0
Total Casualties - 2am	2	0	0	0	2
Casualties - 2pm					
Industrial	0	0	0	0	0
Commuting	0	0	0	0	0
Other-Residential	0	0	0	0	0
Single Family	0	0	0	0	0
Commercial	2	0	0	0	2
Hotels	0	0	0	0	0
Educational	0	0	0	0	1
Total Casualties - 2pm	3	0	0	0	4
Casualties - 5pm					
Commuting	0	0	0	0	0
Commercial	2	0	0	0	2

	Injury Severity Level				Total
	Severity 1	Severity 2	Severity 3	Severity 4	
California					
Sutter					
Casualties - 5pm					
<i>Educational</i>	0	0	0	0	0
<i>Single Family</i>	0	0	0	0	0
<i>Hotels</i>	0	0	0	0	0
<i>Industrial</i>	0	0	0	0	0
<i>Other-Residential</i>	0	0	0	0	0
Total Casualties - 5pm	3	0	0	0	3
Tehama					
Casualties - 2am					
<i>Hotels</i>	0	0	0	0	0
<i>Industrial</i>	0	0	0	0	0
<i>Commercial</i>	0	0	0	0	0
<i>Other-Residential</i>	0	0	0	0	0
<i>Educational</i>	0	0	0	0	0
<i>Commuting</i>	0	0	0	0	0
<i>Single Family</i>	0	0	0	0	0
Total Casualties - 2am	0	0	0	0	0
Casualties - 2pm					
<i>Other-Residential</i>	0	0	0	0	0
<i>Commercial</i>	0	0	0	0	0
<i>Industrial</i>	0	0	0	0	0
<i>Single Family</i>	0	0	0	0	0
<i>Educational</i>	0	0	0	0	0
<i>Commuting</i>	0	0	0	0	0
<i>Hotels</i>	0	0	0	0	0
Total Casualties - 2pm	0	0	0	0	0
Casualties - 5pm					
<i>Hotels</i>	0	0	0	0	0
<i>Educational</i>	0	0	0	0	0
<i>Industrial</i>	0	0	0	0	0
<i>Single Family</i>	0	0	0	0	0
<i>Commercial</i>	0	0	0	0	0
<i>Commuting</i>	0	0	0	0	0
<i>Other-Residential</i>	0	0	0	0	0
Total Casualties - 5pm	0	0	0	0	0
Trinity					
Casualties - 2am					
<i>Commercial</i>	0	0	0	0	0
<i>Educational</i>	0	0	0	0	0
<i>Other-Residential</i>	1	0	0	0	1
<i>Single Family</i>	0	0	0	0	0
<i>Commuting</i>	0	0	0	0	0

	Injury Severity Level				Total
	Severity 1	Severity 2	Severity 3	Severity 4	
California					
Trinity					
Casualties - 2am					
<i>Hotels</i>	0	0	0	0	0
<i>Industrial</i>	0	0	0	0	0
Total Casualties - 2am	1	0	0	0	1
Casualties - 2pm					
<i>Educational</i>	0	0	0	0	0
<i>Commuting</i>	0	0	0	0	0
<i>Hotels</i>	0	0	0	0	0
<i>Single Family</i>	0	0	0	0	0
<i>Commercial</i>	0	0	0	0	0
<i>Industrial</i>	0	0	0	0	0
<i>Other-Residential</i>	0	0	0	0	0
Total Casualties - 2pm	1	0	0	0	1
Casualties - 5pm					
<i>Single Family</i>	0	0	0	0	0
<i>Commercial</i>	0	0	0	0	0
<i>Other-Residential</i>	0	0	0	0	0
<i>Commuting</i>	0	0	0	0	0
<i>Hotels</i>	0	0	0	0	0
<i>Educational</i>	0	0	0	0	0
<i>Industrial</i>	0	0	0	0	0
Total Casualties - 5pm	0	0	0	0	0
Yolo					
Casualties - 2am					
<i>Single Family</i>	2	0	0	0	2
<i>Other-Residential</i>	2	0	0	0	2
<i>Commercial</i>	0	0	0	0	0
<i>Educational</i>	0	0	0	0	0
<i>Commuting</i>	0	0	0	0	0
<i>Hotels</i>	0	0	0	0	0
<i>Industrial</i>	0	0	0	0	0
Total Casualties - 2am	4	0	0	0	4
Casualties - 2pm					
<i>Industrial</i>	0	0	0	0	0
<i>Hotels</i>	0	0	0	0	0
<i>Educational</i>	1	0	0	0	1
<i>Commuting</i>	0	0	0	0	0
<i>Commercial</i>	3	0	0	0	4
<i>Other-Residential</i>	1	0	0	0	1
<i>Single Family</i>	1	0	0	0	1
Total Casualties - 2pm	6	0	0	0	7

	Injury Severity Level				Total
	Severity 1	Severity 2	Severity 3	Severity 4	
California					
Yolo					
Casualties - 5pm					
<i>Other-Residential</i>	1	0	0	0	1
<i>Single Family</i>	1	0	0	0	1
<i>Commuting</i>	0	0	0	0	0
<i>Commercial</i>	2	0	0	0	2
<i>Hotels</i>	0	0	0	0	0
<i>Educational</i>	0	0	0	0	0
<i>Industrial</i>	0	0	0	0	0
Total Casualties - 5pm	4	0	0	0	4
Yuba					
Casualties - 2am					
<i>Industrial</i>	0	0	0	0	0
<i>Other-Residential</i>	0	0	0	0	0
<i>Commercial</i>	0	0	0	0	0
<i>Educational</i>	0	0	0	0	0
<i>Single Family</i>	0	0	0	0	0
<i>Commuting</i>	0	0	0	0	0
<i>Hotels</i>	0	0	0	0	0
Total Casualties - 2am	1	0	0	0	1
Casualties - 2pm					
<i>Commercial</i>	0	0	0	0	0
<i>Commuting</i>	0	0	0	0	0
<i>Single Family</i>	0	0	0	0	0
<i>Other-Residential</i>	0	0	0	0	0
<i>Industrial</i>	0	0	0	0	0
<i>Hotels</i>	0	0	0	0	0
<i>Educational</i>	0	0	0	0	0
Total Casualties - 2pm	1	0	0	0	1
Casualties - 5pm					
<i>Hotels</i>	0	0	0	0	0
<i>Educational</i>	0	0	0	0	0
<i>Industrial</i>	0	0	0	0	0
<i>Other-Residential</i>	0	0	0	0	0
<i>Single Family</i>	0	0	0	0	0
<i>Commercial</i>	0	0	0	0	0
<i>Commuting</i>	0	0	0	0	0
Total Casualties - 5pm	1	0	0	0	1
Region Total	NA	NA	NA	NA	NA

Injury Severity Level

Severity 1

Severity 2

Severity 3

Severity 4

Total

Totals only reflect data for those census tracts/blocks included in the user's study region and will reflect the entire county/state only if all of the census blocks for that county/states were selected at the time of study region creation.

Debris Summary Report

November 08, 2024

All values are in thousands of tons.

	Brick, Wood & Others	Concrete & Steel	Total
California			
Butte	3	3	6
Alameda	3	1	4
Humboldt	3	4	7
Del Norte	0	0	0
Solano	2	2	4
San Mateo	0	0	0
San Joaquin	2	0	2
Nevada	0	0	0
Colusa	4	9	13
Plumas	0	0	0
Shasta	1	0	1
Siskiyou	0	0	0
Napa	3	3	6
Mendocino	7	6	12
Contra Costa	1	1	2
Tehama	1	0	1
Trinity	1	0	1
El Dorado	0	0	0
Amador	0	0	0

	Brick, Wood & Others	Concrete & Steel	Total
Santa Cruz	0	0	0
Sierra	0	0	0
Lake	84	62	146
Modoc	0	0	0
Sacramento	5	4	9
Yolo	4	5	9
Calaveras	0	0	0
Yuba	1	1	1
Glenn	2	5	7
Stanislaus	0	0	0
Sonoma	7	9	16
Santa Clara	0	0	0
San Francisco	5	1	7
Merced	0	0	0
Placer	0	0	1
Marin	0	0	0
Lassen	0	0	0
Sutter	2	3	4
Total	141	120	261
Region Total	141	120	261

Totals only reflect data for those census tracts/blocks included in the user's study region and will reflect the entire county/state only if all of the census blocks for that county/states were selected at the time of study region creation.

Direct Economic Losses For Buildings

November 8, 2024

All values are in thousands of dollars

	Capital Stock Losses				Loss Ratio %	Income Losses				Total Loss
	Cost Structural Damage	Cost Non-struct. Damage	Cost Contents Damage	Inventory Loss		Relocation Loss	Capital Related Loss	Wages Losses	Rental Income Loss	
California										
Contra Costa	1,927	22,494	12,215	1,357	0.01	424	442	584	439	39,881
Mendocino	12,520	100,543	51,114	5,462	0.50	3,771	2,577	2,796	2,361	181,143
Napa	4,905	39,585	20,821	2,425	0.13	1,464	1,193	1,309	1,128	72,831
Siskiyou	0	39	28	3	0.00	0	0	0	0	69
Plumas	0	12	8	1	0.00	0	0	0	0	21
Colusa	10,460	41,601	20,274	3,345	1.22	4,096	4,762	5,125	2,700	92,363
Shasta	639	8,141	4,307	712	0.02	86	69	75	111	14,140
Trinity	1,169	7,665	3,646	516	0.24	381	50	47	147	13,622
Tehama	573	7,987	4,646	722	0.07	99	59	69	91	14,246

	Capital Stock Losses				Loss Ratio %	Income Losses				Total Loss
	Cost Structural Damage	Cost Non-struct. Damage	Cost Contents Damage	Inventory Loss		Relocation Loss	Capital Related Loss	Wages Losses	Rental Income Loss	
Alameda	3,506	26,457	15,026	1,429	0.01	764	846	1,174	1,114	50,316
Humboldt	5,637	39,313	20,081	1,720	0.16	1,729	1,338	1,470	1,332	72,620
Del Norte	0	2	1	0	0.00	0	0	0	0	3
Nevada	10	363	222	18	0.00	1	1	2	2	618
San Joaquin	1,184	9,298	5,422	647	0.01	270	107	152	211	17,292
Butte	4,317	28,246	16,623	2,157	0.08	1,457	597	756	708	54,861
Solano	3,992	47,143	24,837	2,597	0.06	660	710	973	774	81,685
San Mateo	488	5,464	2,867	252	0.00	52	87	99	254	9,563
Yolo	9,124	77,166	42,911	4,976	0.20	2,210	2,848	3,069	2,080	144,383
Glenn	7,608	22,735	13,148	3,749	0.47	1,854	1,126	1,197	868	52,286
Lassen	0	0	0	0	0.00	0	0	0	0	1
San Francisco	4,906	12,602	6,785	449	0.01	853	777	836	1,923	29,131
Stanislaus	47	1,730	1,158	159	0.00	5	7	6	14	3,125
Sutter	5,320	29,813	15,290	3,048	0.21	929	582	614	615	56,210
Santa Clara	168	4,562	3,012	292	0.00	15	32	39	53	8,173
Sonoma	14,501	111,611	56,545	6,807	0.12	3,815	4,109	4,779	3,195	205,363
Calaveras	0	13	10	3	0.00	0	0	0	0	27
Yuba	1,112	11,097	5,800	663	0.10	276	309	354	253	19,866

	Capital Stock Losses				Loss Ratio %	Income Losses				Total Loss
	Cost Structural Damage	Cost Non-struct. Damage	Cost Contents Damage	Inventory Loss		Relocation Loss	Capital Related Loss	Wages Losses	Rental Income Loss	
Merced	0	0	0	0	0.00	0	0	0	0	0
Placer	541	8,867	4,631	434	0.01	40	49	60	73	14,694
Marin	492	6,675	3,588	315	0.01	64	74	80	104	11,393
El Dorado	1	288	192	9	0.00	0	0	0	0	491
Lake	83,932	359,431	119,098	7,954	3.12	43,581	16,389	19,665	20,748	670,799
Sierra	0	1	1	0	0.00	0	0	0	0	2
Santa Cruz	0	0	0	0	0.00	0	0	0	0	0
Amador	0	36	26	3	0.00	0	0	0	0	66
Sacramento	8,636	83,471	45,272	4,165	0.03	2,614	2,705	3,669	2,991	153,524
Modoc	0	0	0	0	0.00	0	0	0	0	0
Total	187,715	1,114,452	519,606	56,387	0.18	71,511	41,846	48,998	44,291	2,084,806
Region Total	187,715	1,114,452	519,606	56,387	0.18	71,511	41,846	48,998	44,291	2,084,806

Totals only reflect data for those census tracts/blocks included in the user's study region and will reflect the entire county/state only if all of the census blocks for that county/states were selected at the time of study region creation.

Direct Economic Loss For Transportation

November 08, 2024

All values are in thousands of dollars

	Highway	Railway	Light Rail	Bus Facility	Ports	Ferries	Airport	Total
California								
Alameda								
Segments	0	0	0					0
Bridges	126	0	0					126
Tunnels	0	0	0					0
Facilities		436	0	22	1,725	38	3,593	5,815
Total	126	436	0	22	1,725	38	3,593	5,941
Amador								
Segments	0	0	0					0
Bridges	0	0	0					0
Tunnels	0	0	0					0
Facilities		0	0	0	0	0	51	51
Total	0	0	0	0	0	0	51	51
Butte								
Segments	0	0	0					0
Bridges	125	4	0					129
Tunnels	0	0	0					0
Facilities		109	0	0	0	0	650	759

	Highway	Railway	Light Rail	Bus Facility	Ports	Ferries	Airport	Total
Total	125	113	0	0	0	0	650	888
Calaveras								
Segments	0	0	0					0
Bridges	0	0	0					0
Tunnels	0	0	0					0
Facilities		0	0	0	0	0	11	11
Total	0	0	0	0	0	0	11	11
Colusa								
Segments	0	0	0					0
Bridges	1,355	329	0					1,684
Tunnels	0	0	0					0
Facilities		0	0	0	0	0	400	400
Total	1,355	329	0	0	0	0	400	2,084
Contra Costa								
Segments	0	0	0					0
Bridges	264	5	0					269
Tunnels	0	0	0					0
Facilities		256	165	0	4,621	51	231	5,325
Total	264	261	165	0	4,621	51	231	5,594
Del Norte								
Segments	0	0	0					0
Bridges	0	0	0					0
Tunnels	0	0	0					0
Facilities		0	0	2	4	0	62	69

	Highway	Railway	Light Rail	Bus Facility	Ports	Ferries	Airport	Total
Total	0	0	0	2	4	0	62	69
El Dorado								
Segments	0	0	0					0
Bridges	0	0	0					0
Tunnels	0	0	0					0
Facilities		0	0	26	0	0	236	262
Total	0	0	0	26	0	0	236	263
Glenn								
Segments	0	0	0					0
Bridges	469	53	0					522
Tunnels	0	0	0					0
Facilities		0	0	0	288	0	617	905
Total	469	53	0	0	288	0	617	1,427
Humboldt								
Segments	0	0	0					0
Bridges	1,268	0	0					1,269
Tunnels	0	0	0					0
Facilities		0	0	186	3,440	0	2,574	6,200
Total	1,268	0	0	186	3,440	0	2,574	7,469
Lake								
Segments	0	0	0					0
Bridges	4,106	0	0					4,106
Tunnels	0	0	0					0
Facilities		0	0	0	0	0	2,991	2,991

	Highway	Railway	Light Rail	Bus Facility	Ports	Ferries	Airport	Total
Total	4,106	0	0	0	0	0	2,991	7,097
Lassen								
Segments	0	0	0					0
Bridges	0	0	0					0
Tunnels	0	0	0					0
Facilities		0	0	0	0	0	34	34
Total	0	0	0	0	0	0	34	34
Marin								
Segments	0	0	0					0
Bridges	291	0	0					291
Tunnels	0	0	0					0
Facilities		0	0	167	1,479	64	217	1,928
Total	291	0	0	167	1,479	64	217	2,219
Mendocino								
Segments	0	0	0					0
Bridges	3,344	219	0					3,563
Tunnels	0	0	0					0
Facilities		0	0	778	156	0	3,893	4,828
Total	3,344	219	0	778	156	0	3,893	8,391
Merced								
Segments	0	0	0					0
Bridges	1	0	0					1
Tunnels	0	0	0					0
Facilities		6	0	2	0	0	46	54

	Highway	Railway	Light Rail	Bus Facility	Ports	Ferries	Airport	Total
Total	1	6	0	2	0	0	46	55
Modoc								
Segments	0	0	0					0
Bridges	0	0	0					0
Tunnels	0	0	0					0
Facilities		0	0	0	0	0	34	34
Total	0	0	0	0	0	0	34	34
Napa								
Segments	0	0	0					0
Bridges	118	15	0					133
Tunnels	0	0	0					0
Facilities		0	0	93	469	0	948	1,510
Total	118	15	0	93	469	0	948	1,643
Nevada								
Segments	0	0	0					0
Bridges	0	0	0					0
Tunnels	0	0	0					0
Facilities		3	0	0	0	0	57	60
Total	0	3	0	0	0	0	57	60
Placer								
Segments	0	0	0					0
Bridges	9	0	0					9
Tunnels	0	0	0					0
Facilities		103	0	21	0	0	371	494

	Highway	Railway	Light Rail	Bus Facility	Ports	Ferries	Airport	Total
Total	9	103	0	21	0	0	371	504
Plumas								
Segments	0	0	0					0
Bridges	0	0	0					0
Tunnels	0	0	0					0
Facilities		0	0	0	0	0	312	312
Total	0	0	0	0	0	0	312	312
Sacramento								
Segments	0	0	0					0
Bridges	1,591	2	0					1,594
Tunnels	0	0	0					0
Facilities		109	7,326	181	2,180	55	17,128	26,979
Total	1,591	111	7,326	181	2,180	55	17,128	28,572
San Francisco								
Segments	0	0	0					0
Bridges	408	0	0					408
Tunnels	0	0	0					0
Facilities		0	31,375	49	2,019	51	308	33,802
Total	408	0	31,375	49	2,019	51	308	34,210
San Joaquin								
Segments	0	0	0					0
Bridges	199	0	0					199
Tunnels	0	0	0					0
Facilities		410	0	21	1,578	51	418	2,479

	Highway	Railway	Light Rail	Bus Facility	Ports	Ferries	Airport	Total
Total	199	411	0	21	1,578	51	418	2,678
San Mateo								
Segments	0	0	0					0
Bridges	323	0	0					323
Tunnels	0	0	0					0
Facilities		0	0	0	661	0	8,789	9,450
Total	323	0	0	0	661	0	8,789	9,772
Santa Clara								
Segments	0	0	0					0
Bridges	15	0	0					15
Tunnels	0	0	0					0
Facilities		103	4,829	26	184	0	3,479	8,619
Total	15	103	4,829	26	184	0	3,479	8,634
Santa Cruz								
Segments	0	0	0					0
Bridges	0	0	0					0
Tunnels	0	0	0					0
Facilities		0	0	5	4	0	29	38
Total	0	0	0	5	4	0	29	38
Shasta								
Segments	0	0	0					0
Bridges	16	0	0					16
Tunnels	0	0	0					0
Facilities		26	0	22	0	0	229	277

	Highway	Railway	Light Rail	Bus Facility	Ports	Ferries	Airport	Total
Total	16	26	0	22	0	0	229	293
Sierra								
Segments	0	0	0					0
Bridges	0	0	0					0
Tunnels	0	0	0					0
Facilities		0	0	0	0	0	51	51
Total	0	0	0	0	0	0	51	51
Siskiyou								
Segments	0	0	0					0
Bridges	1	0	0					1
Tunnels	0	0	0					0
Facilities		26	0	22	0	0	312	360
Total	1	26	0	22	0	0	312	360
Solano								
Segments	0	0	0					0
Bridges	450	39	0					489
Tunnels	0	0	0					0
Facilities		244	0	136	4,718	177	816	6,091
Total	450	283	0	136	4,718	177	816	6,580
Sonoma								
Segments	0	0	0					0
Bridges	443	27	0					469
Tunnels	0	0	0					0
Facilities		0	0	97	1,095	0	2,127	3,318

	Highway	Railway	Light Rail	Bus Facility	Ports	Ferries	Airport	Total
Total	443	27	0	97	1,095	0	2,127	3,787
Stanislaus								
Segments	0	0	0					0
Bridges	24	0	0					24
Tunnels	0	0	0					0
Facilities		131	0	24	0	0	140	295
Total	24	131	0	24	0	0	140	319
Sutter								
Segments	0	0	0					0
Bridges	388	3	0					390
Tunnels	0	0	0					0
Facilities		0	0	0	0	0	548	548
Total	388	3	0	0	0	0	548	938
Tehama								
Segments	0	0	0					0
Bridges	184	4	0					188
Tunnels	0	0	0					0
Facilities		0	0	0	0	0	435	435
Total	184	4	0	0	0	0	435	623
Trinity								
Segments	0	0	0					0
Bridges	280	0	0					280
Tunnels	0	0	0					0
Facilities		0	0	0	0	0	2,268	2,268

	Highway	Railway	Light Rail	Bus Facility	Ports	Ferries	Airport	Total
Total	280	0	0	0	0	0	2,268	2,547
Yolo								
Segments	0	0	0					0
Bridges	2,081	21	0					2,103
Tunnels	0	0	0					0
Facilities		546	0	0	2,538	0	652	3,737
Total	2,081	568	0	0	2,538	0	652	5,839
Yuba								
Segments	0	0	0					0
Bridges	18	4	0					22
Tunnels	0	0	0					0
Facilities		0	0	92	0	0	435	527
Total	18	4	0	92	0	0	435	548
Total	17,897	3,234	43,695	1,973	27,159	488	55,491	149,937
Region Total	17,897	3,234	43,695	1,973	27,159	488	55,491	149,937

Totals only reflect data for those census tracts/blocks included in the user's study region and will reflect the entire county/state only if all of the census blocks for that county/states were selected at the time of study region creation.

Direct Economic Loss For Utilities

November 08, 2024

All values are in thousands of dollars

	Potable Water	Waste Water	Oil Systems	Natural Gas	Electric Power	Communication	Total
California							
Alameda							
Facilities	84	1,844	0	0	14,913	4	16,845
Pipelines	148	74	0	0			222
Total	232	1,919	0	0	14,913	4	17,067
Amador							
Facilities	0	3	0	0	1,249	0	1,252
Pipelines	23	12	0	0			35
Total	23	14	0	0	1,249	0	1,286
Butte							
Facilities	28	6,097	1	0	51,692	5	57,824
Pipelines	200	101	0	0			301
Total	228	6,198	1	0	51,692	5	58,125
Calaveras							
Facilities	1	10	0	0	1,359	0	1,370

	Potable Water	Waste Water	Oil Systems	Natural Gas	Electric Power	Communication	Total
<i>Pipelines</i>	35	18	0	0			53
Total	36	28	0	0	1,359	0	1,423
Colusa							
<i>Facilities</i>	0	21,024	0	1,590	125,473	14	148,100
<i>Pipelines</i>	892	448	0	0			1,340
Total	892	21,472	0	1,590	125,473	14	149,441
Contra Costa							
<i>Facilities</i>	169	4,524	2	0	59,978	2	64,674
<i>Pipelines</i>	177	89	0	0			266
Total	346	4,613	2	0	59,978	2	64,941
Del Norte							
<i>Facilities</i>	0	3	0	0	0	0	3
<i>Pipelines</i>	34	17	0	0			51
Total	34	20	0	0	0	0	54
El Dorado							
<i>Facilities</i>	28	492	0	0	13,707	1	14,228
<i>Pipelines</i>	78	39	0	0			117
Total	106	531	0	0	13,707	1	14,345
Glenn							
<i>Facilities</i>	0	4,415	0	0	5,099	7	9,521
<i>Pipelines</i>	412	207	0	0			619

	Potable Water	Waste Water	Oil Systems	Natural Gas	Electric Power	Communication	Total
Total	412	4,622	0	0	5,099	7	10,140
Humboldt							
<i>Facilities</i>	0	26,438	0	0	26,486	96	53,020
<i>Pipelines</i>	779	391	0	0			1,170
Total	779	26,830	0	0	26,486	96	54,191
Lake							
<i>Facilities</i>	13,729	0	0	0	124,072	150	137,951
<i>Pipelines</i>	5,042	2,533	0	0			7,575
Total	18,770	2,533	0	0	124,072	150	145,525
Lassen							
<i>Facilities</i>	0	3	0	0	25	0	28
<i>Pipelines</i>	56	28	0	0			84
Total	56	31	0	0	25	0	112
Marin							
<i>Facilities</i>	28	5,188	0	0	770	4	5,989
<i>Pipelines</i>	54	27	0	0			81
Total	82	5,215	0	0	770	4	6,071
Mendocino							
<i>Facilities</i>	0	84,096	0	0	33,554	129	117,780
<i>Pipelines</i>	2,684	1,348	0	0			4,033
Total	2,684	85,445	0	0	33,554	129	121,813

	Potable Water	Waste Water	Oil Systems	Natural Gas	Electric Power	Communication	Total
Merced							
<i>Facilities</i>	0	13	0	0	1,143	0	1,156
<i>Pipelines</i>	76	38	0	0			114
Total	76	51	0	0	1,143	0	1,270
Modoc							
<i>Facilities</i>	0	3	0	3	0	0	5
<i>Pipelines</i>	32	16	0	0			48
Total	32	19	0	3	0	0	53
Napa							
<i>Facilities</i>	0	8,988	0	0	4,314	19	13,321
<i>Pipelines</i>	107	54	0	0			161
Total	107	9,042	0	0	4,314	19	13,482
Nevada							
<i>Facilities</i>	0	740	0	0	2,927	1	3,668
<i>Pipelines</i>	69	35	0	0			104
Total	69	775	0	0	2,927	1	3,772
Placer							
<i>Facilities</i>	0	4,032	0	0	23,828	1	27,861
<i>Pipelines</i>	130	65	0	0			195
Total	130	4,097	0	0	23,828	1	28,056
Plumas							

	Potable Water	Waste Water	Oil Systems	Natural Gas	Electric Power	Communication	Total
<i>Facilities</i>	1	371	0	0	21,286	1	21,659
<i>Pipelines</i>	95	48	0	0			142
Total	95	419	0	0	21,286	1	21,801
Sacramento							
<i>Facilities</i>	0	2,631	0	0	20,638	43	23,312
<i>Pipelines</i>	351	176	0	0			528
Total	351	2,807	0	0	20,638	43	23,839
San Francisco							
<i>Facilities</i>	0	861	0	0	108	4	972
<i>Pipelines</i>	24	12	0	0			36
Total	24	873	0	0	108	4	1,008
San Joaquin							
<i>Facilities</i>	140	861	0	0	9,393	2	10,396
<i>Pipelines</i>	100	50	0	0			150
Total	241	911	0	0	9,393	2	10,547
San Mateo							
<i>Facilities</i>	0	1,598	0	0	362	3	1,963
<i>Pipelines</i>	68	34	0	0			103
Total	68	1,633	0	0	362	3	2,066
Santa Clara							
<i>Facilities</i>	56	369	0	0	6,781	2	7,208

	Potable Water	Waste Water	Oil Systems	Natural Gas	Electric Power	Communication	Total
<i>Pipelines</i>	124	62	0	0			186
Total	180	431	0	0	6,781	2	7,394
Santa Cruz							
<i>Facilities</i>	0	10	0	0	1	0	11
<i>Pipelines</i>	40	20	0	0			61
Total	40	31	0	0	1	0	72
Shasta							
<i>Facilities</i>	56	2,385	0	3	95,959	8	98,411
<i>Pipelines</i>	227	114	0	0			341
Total	283	2,499	0	3	95,959	8	98,752
Sierra							
<i>Facilities</i>	0	0	0	0	10	0	10
<i>Pipelines</i>	35	17	0	0			52
Total	35	17	0	0	10	0	62
Siskiyou							
<i>Facilities</i>	0	126	0	0	350	1	476
<i>Pipelines</i>	167	84	0	0			252
Total	167	210	0	0	350	1	728
Solano							
<i>Facilities</i>	0	6,466	0	0	112,412	5	118,884
<i>Pipelines</i>	331	166	0	0			498

	Potable Water	Waste Water	Oil Systems	Natural Gas	Electric Power	Communication	Total
Total	331	6,633	0	0	112,412	5	119,381
Sonoma							
<i>Facilities</i>	0	28,330	0	0	681,031	70	709,431
<i>Pipelines</i>	429	216	0	0			645
Total	429	28,546	0	0	681,031	70	710,076
Stanislaus							
<i>Facilities</i>	0	251	0	0	5,313	2	5,566
<i>Pipelines</i>	62	31	0	0			93
Total	62	282	0	0	5,313	2	5,659
Sutter							
<i>Facilities</i>	0	3,049	0	0	56,980	19	60,048
<i>Pipelines</i>	221	111	0	0			333
Total	221	3,160	0	0	56,980	19	60,380
Tehama							
<i>Facilities</i>	0	3,172	0	658	5,993	10	9,833
<i>Pipelines</i>	316	159	0	0			475
Total	316	3,330	0	658	5,993	10	10,307
Trinity							
<i>Facilities</i>	0	0	0	0	30,133	0	30,133
<i>Pipelines</i>	872	438	0	0			1,310
Total	872	438	0	0	30,133	0	31,443

	Potable Water	Waste Water	Oil Systems	Natural Gas	Electric Power	Communication	Total
Yolo							
<i>Facilities</i>	0	6,097	0	0	6,937	22	13,056
<i>Pipelines</i>	287	144	0	0			432
Total	287	6,242	0	0	6,937	22	13,488
Yuba							
<i>Facilities</i>	0	4,696	0	0	16,157	2	20,856
<i>Pipelines</i>	91	46	0	0			137
Total	91	4,742	0	0	16,157	2	20,992
Total	29,190	236,655	3	2,253	1,560,433	625	1,829,161
Region Total	29,190	236,655	3	2,253	1,560,433	625	1,829,161

Totals only reflect data for those census tracts/blocks included in the user's study region and will reflect the entire county/state only if all of the census blocks for that county/states were selected at the time of study region creation.

Hazus Quick Assessment Report

Estimated Economic Loss (\$ Billions)

Category	Description	Range
General Building Stock	Building Damage	0.70 - 2.60
	Building Contents	0.10 - 0.40
	Business Interruption	0.10 - 0.40
Infrastructure	Lifelines Damage	
Total		1.00 - 4.20

Preliminary Damage Assessment (PDA) Estimates

Description	Residential	Commercial	Other	Total
Affected	27,800	3,100	1,600	32,500
Minor	7,700	720	390	8,810
Major	2,500	70	40	2,610
Destroyed	180	< 10	< 10	180
Total	38,180	3,890	2,030	44,100

Estimated Casualties : Night Time

Severity Level	Description	# Persons
Level 1	Medical Aid	70 - 300
Level 2	Hospital Care	10 - 30
Level 3	Life-threatening	< 10
Level 4	Fatalities	< 10

Estimated Shelter Needs

Type	Households	People
Displaced Households	80 - 300	200 - 750
Public Shelter	40	100

Comments :

**Hazus damage estimates are presented using FEMA Preliminary Damage Assessment (PDA) categories. These estimates should be used for planning purposes and may not reflect actual observed damages from the PDA process.*

Disclaimer:

The estimates of social and economic impacts contained in this report were produced using HAZUS loss estimation methodology software which is based on current scientific and engineering knowledge. There are uncertainties inherent in any loss estimation technique. Therefore, there may be significant differences between the modeled results contained in this report and the actual social and economic losses following a specific earthquake. These results can be improved by using enhanced inventory, geotechnical, and observed ground motion data.

Earthquake Information

Location :

Origin Time:

Magnitude : 7.54

Epicenter Latitude/Longitude :
/

Depth & Type : /U

Name :
NA

Ground Motion /Attenuation :

Maximum PGA: 0.00

Information Sources:

Comments :

Population and Building Exposure

Population: 13,375,397

Building Exposure : (\$ Millions)

Residential	1,737,466
Commercial	462,285
Other	401,757
Total	2,601,508

Counties : See Appendix

Major Metro Area :

Hazus Quick Assessment Report

Estimated Economic Loss (\$ Billions)

Category	Description	Range
General Building Stock	Building Damage	0.70 - 2.60
	Building Contents	0.10 - 0.40
	Business Interruption	0.10 - 0.40
Infrastructure	Lifelines Damage	
Total		1.00 - 4.20

Preliminary Damage Assessment (PDA) Estimates

Description	Residential	Commercial	Other	Total
Affected	27,800	3,100	1,600	32,500
Minor	7,700	720	390	8,810
Major	2,500	70	40	2,610
Destroyed	180	< 10	< 10	180
Total	38,180	3,890	2,030	44,100

Estimated Casualties : Day Time

Severity Level	Description	# Persons
Level 1	Medical Aid	70 - 300
Level 2	Hospital Care	10 - 30
Level 3	Life-threatening	< 10
Level 4	Fatalities	< 10

Estimated Shelter Needs

Type	Households	People
Displaced Households	80 - 300	200 - 750
Public Shelter	40	100

Comments :

*Hazus damage estimates are presented using FEMA Preliminary Damage Assessment (PDA) categories. These estimates should be used for planning purposes and may not reflect actual observed damages from the PDA process.

Disclaimer:

The estimates of social and economic impacts contained in this report were produced using HAZUS loss estimation methodology software which is based on current scientific and engineering knowledge. There are uncertainties inherent in any loss estimation technique. Therefore, there may be significant differences between the modeled results contained in this report and the actual social and economic losses following a specific earthquake. These results can be improved by using enhanced inventory, geotechnical, and observed ground motion data.

Earthquake Information

Location :

Origin Time:

Magnitude : 7.54

Epicenter Latitude/Longitude :
/

Depth & Type : /U

Name :
NA

Ground Motion /Attenuation :

Maximum PGA: 0.00

Information Sources:

Comments :

Population and Building Exposure

Population: 13,375,397

Building Exposure : (\$ Millions)

Residential	1,737,466
Commercial	462,285
Other	401,757
Total	2,601,508

Counties : See Appendix

Major Metro Area :

Hazus Quick Assessment Report

Estimated Economic Loss (\$ Billions)

Category	Description	Range
General Building Stock	Building Damage	0.70 - 2.60
	Building Contents	0.10 - 0.40
	Business Interruption	0.10 - 0.40
Infrastructure	Lifelines Damage	
Total		1.00 - 4.20

Preliminary Damage Assessment (PDA) Estimates

Description	Residential	Commercial	Other	Total
Affected	27,800	3,100	1,600	32,500
Minor	7,700	720	390	8,810
Major	2,500	70	40	2,610
Destroyed	180	< 10	< 10	180
Total	38,180	3,890	2,030	44,100

Estimated Casualties : Commute Time

Severity Level	Description	# Persons
Level 1	Medical Aid	50 - 200
Level 2	Hospital Care	10 - 20
Level 3	Life-threatening	< 10
Level 4	Fatalities	< 10

Estimated Shelter Needs

Type	Households	People
Displaced Households	80 - 300	200 - 750
Public Shelter	40	100

Comments :

**Hazus damage estimates are presented using FEMA Preliminary Damage Assessment (PDA) categories. These estimates should be used for planning purposes and may not reflect actual observed damages from the PDA process.*

Disclaimer:

The estimates of social and economic impacts contained in this report were produced using HAZUS loss estimation methodology software which is based on current scientific and engineering knowledge. There are uncertainties inherent in any loss estimation technique. Therefore, there may be significant differences between the modeled results contained in this report and the actual social and economic losses following a specific earthquake. These results can be improved by using enhanced inventory, geotechnical, and observed ground motion data.

Earthquake Information

Location :

Origin Time:

Magnitude : 7.54

Epicenter Latitude/Longitude :
/

Depth & Type : /U

Name :
NA

Ground Motion /Attenuation :

Maximum PGA: 0.00

Information Sources:

Comments :

Population and Building Exposure

Population: 13,375,397

Building Exposure : (\$ Millions)

Residential	1,737,466
Commercial	462,285
Other	401,757
Total	2,601,508

Counties : See Appendix

Major Metro Area :

Shelter Summary Report

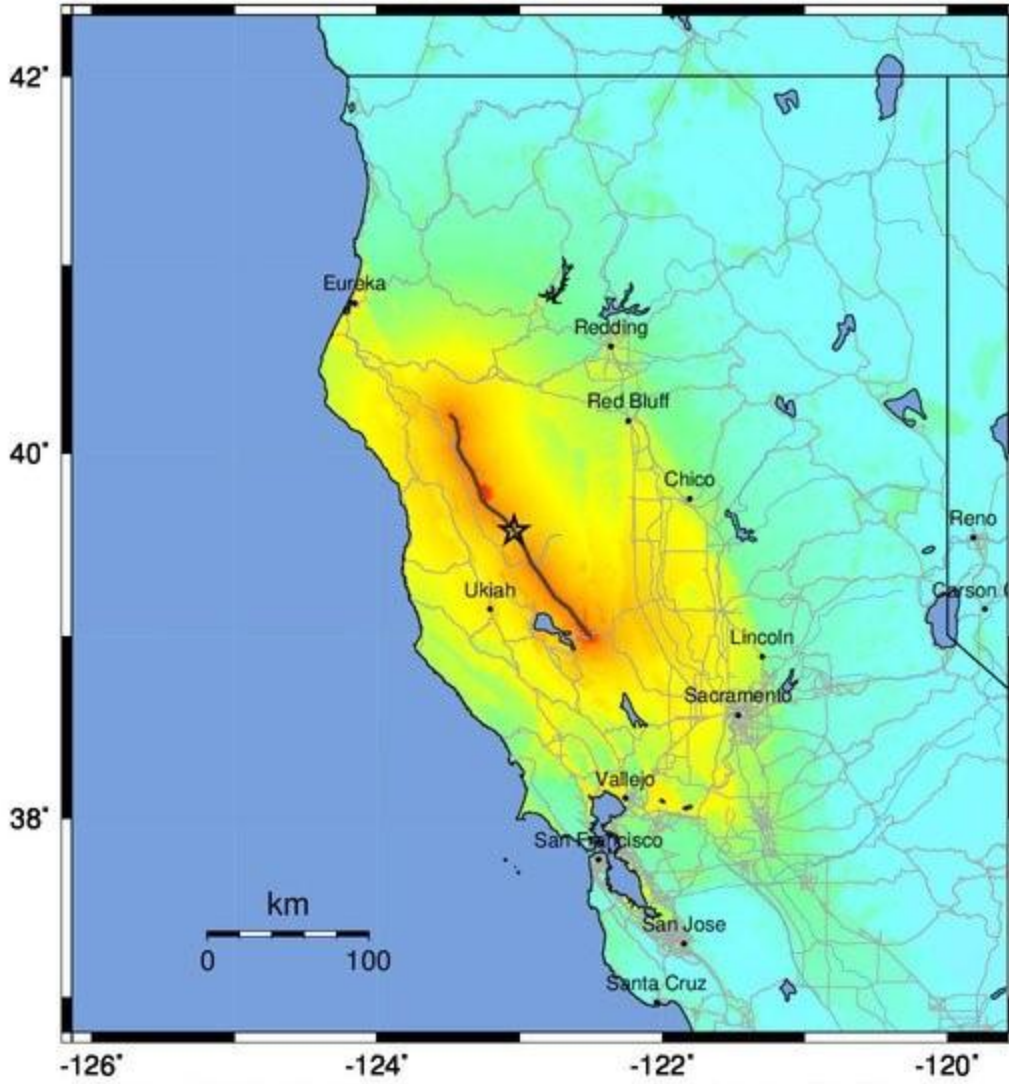
November 08, 2024

	# of Displaced Households	# of People Needing Short Term Shelter
California		
Butte	1	0
Alameda	1	0
Humboldt	3	2
Del Norte	0	0
Solano	0	0
San Mateo	0	0
San Joaquin	0	0
Nevada	0	0
Colusa	9	6
Plumas	0	0
Shasta	0	0
Siskiyou	0	0
Napa	2	1
Mendocino	1	0
Contra Costa	0	0
Tehama	0	0
Trinity	0	0
El Dorado	0	0
Amador	0	0
Santa Cruz	0	0
Sierra	0	0
Lake	133	78
Modoc	0	0
Sacramento	2	1
Yolo	3	1
Calaveras	0	0
Yuba	0	0
Glenn	5	3
Stanislaus	0	0
Sonoma	5	2
Santa Clara	0	0
San Francisco	2	1

	# of Displaced Households	# of People Needing Short Term Shelter
Merced	0	0
Placer	0	0
Marin	0	0
Lassen	0	0
Sutter	0	0
Total	166	96
Region Total	166	96

Totals only reflect data for those census tracts/blocks included in the user's study region and will reflect the entire county/state only if all of the census blocks for that county/states were selected at the time of study region creation.

-- Earthquake Planning Scenario --
ShakeMap for Bartlett Springs - Median ground motions Scenario
 Scenario Date: May 16, 2017 08:32:07 AM MDT M 7.5 N39.58 W123.04 Depth: 13.9km



-126° -124° -122° -120°
 PLANNING SCENARIO ONLY -- Map Version 14 Processed 2017-05-16 01:15:05 PM MDT

PERCEIVED SHAKING	Not felt	Weak	Light	Moderate	Strong	Very strong	Severe	Violent	Extreme
POTENTIAL DAMAGE	none	none	none	Very light	Light	Moderate	Mod./Heavy	Heavy	Very Heavy
PEAK ACC. (%g)	<0.05	0.3	2.8	6.2	12	22	40	75	>139
PEAK VEL. (cm/s)	<0.02	0.1	1.4	4.7	9.6	20	41	86	>178
INSTRUMENTAL INTENSITY	I	II-III	IV	V	VI	VII	VIII	IX	X+

Scale based upon Worden et al. (2012)