

---

## Hazus: Earthquake Global Risk Report

---

**Region Name:** CascadiaM9\_v2016

**Earthquake Scenario:** gllegacycasc9p0expanded\_peak\_se

**Print Date:** April 16, 2024

**Disclaimer:**

*Totals only reflect data for those census tracts/blocks included in the user's study region.*

*The estimates of social and economic impacts contained in this report were produced using Hazus loss estimation methodology software which is based on current scientific and engineering knowledge. There are uncertainties inherent in any loss estimation technique. Therefore, there may be significant differences between the modeled results contained in this report and the actual social and economic losses following a specific earthquake. These results can be improved by using enhanced inventory, geotechnical, and observed ground motion data.*

## Table of Contents

<b>Section</b>	<b>Page #</b>
<b>General Description of the Region</b>	<b>3</b>
<b>Building and Lifeline Inventory</b>	<b>4</b>
Building Inventory	
Critical Facility Inventory	
Transportation and Utility Lifeline Inventory	
<b>Earthquake Scenario Parameters</b>	<b>7</b>
<b>Direct Earthquake Damage</b>	<b>8</b>
Buildings Damage	
Essential Facilities Damage	
Transportation and Utility Lifeline Damage	
<b>Induced Earthquake Damage</b>	<b>14</b>
Fire Following Earthquake	
Debris Generation	
<b>Social Impact</b>	<b>15</b>
Shelter Requirements	
Casualties	
<b>Economic Loss</b>	<b>17</b>
Building Related Losses	
Transportation and Utility Lifeline Losses	
<b>Appendix A: County Listing for the Region</b>	
<b>Appendix B: Regional Population and Building Value Data</b>	

## General Description of the Region

Hazus-MH is a regional earthquake loss estimation model that was developed by the Federal Emergency Management Agency (FEMA) and the National Institute of Building Sciences. The primary purpose of Hazus is to provide a methodology and software application to develop multi-hazard losses at a regional scale. These loss estimates would be used primarily by local, state and regional officials to plan and stimulate efforts to reduce risks from multi-hazards and to prepare for emergency response and recovery.

The earthquake loss estimates provided in this report was based on a region that includes 40 county(ies) from the following state(s):

California

Note:

Appendix A contains a complete listing of the counties contained in the region.

The geographical size of the region is 72,221.73 square miles and contains 2,679 census tracts. There are over 4,104 thousand households in the region which has a total population of 11,411,682 people. The distribution of population by Total Region and County is provided in Appendix B.

There are an estimated 3,677 thousand buildings in the region with a total building replacement value (excluding contents) of (millions of dollars). Approximately 90.00 % of the buildings (and % of the building value) are associated with residential housing.

The replacement value of the transportation and utility lifeline systems is estimated to be 212,526 and 171,268 (millions of dollars) , respectively.

## Building and Lifeline Inventory

### Building Inventory

Hazus estimates that there are 3,677 thousand buildings in the region which have an aggregate total replacement value of (millions of dollars) . Appendix B provides a general distribution of the building value by Total Region and County.

In terms of building construction types found in the region, wood frame construction makes up 86% of the building inventory. The remaining percentage is distributed between the other general building types.

### Critical Facility Inventory

Hazus breaks critical facilities into two (2) groups: essential facilities and high potential loss facilities (HPL). Essential facilities include hospitals, medical clinics, schools, fire stations, police stations and emergency operations facilities. High potential loss facilities include dams, levees, military installations, nuclear power plants and hazardous material sites.

For essential facilities, there are 223 hospitals in the region with a total bed capacity of 28,912 beds. There are 4,479 schools, 1,492 fire stations, 442 police stations and 79 emergency operation facilities. With respect to high potential loss facilities (HPL), there are no dams identified within the inventory. The inventory also includes no hazardous material sites, no military installations and no nuclear power plants.

### Transportation and Utility Lifeline Inventory

Within Hazus, the lifeline inventory is divided between transportation and utility lifeline systems. There are seven (7) transportation systems that include highways, railways, light rail, bus, ports, ferry and airports. There are six (6) utility systems that include potable water, wastewater, natural gas, crude & refined oil, electric power and communications. The lifeline inventory data are provided in Tables 1 and 2.

The total value of the lifeline inventory is over 383,794.00 (millions of dollars). This inventory includes over 10,547.15 miles of highways, 11,098 bridges, 261,945.16 miles of pipes.

**Table 1: Transportation System Lifeline Inventory**

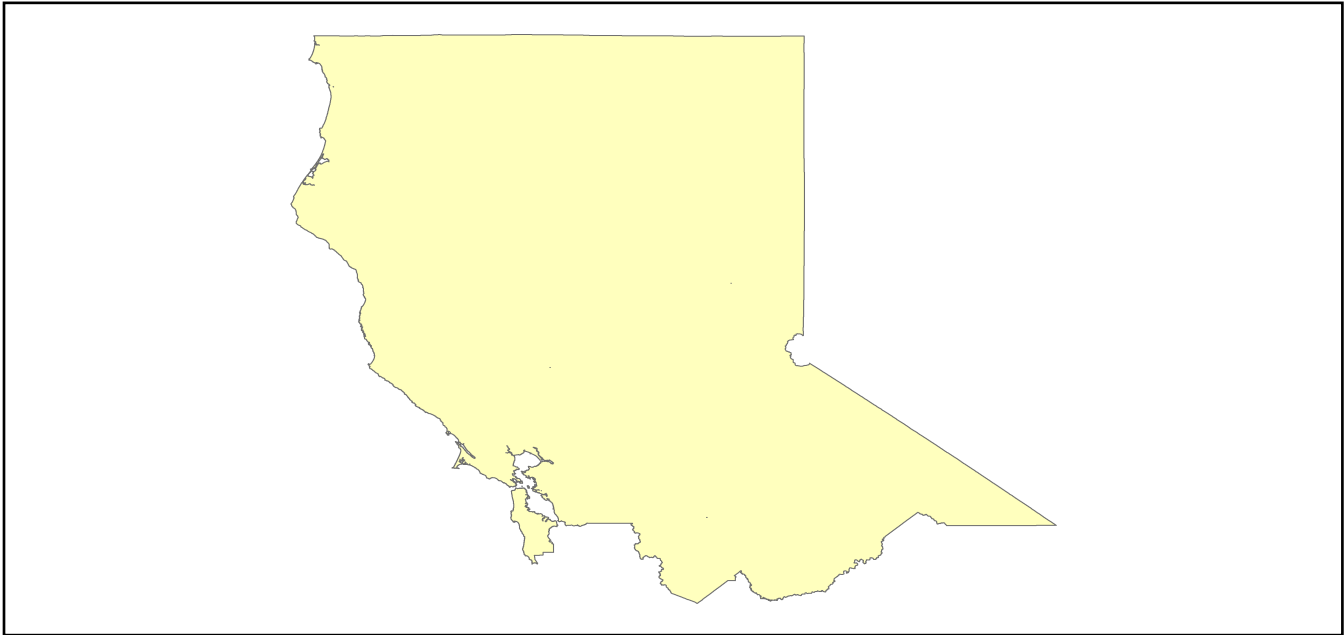
System	Component	# Locations/ # Segments	Replacement value (millions of dollars)
<b>Highway</b>	Bridges	11,098	52459.4338
	Segments	5,826	84909.4961
	Tunnels	47	987.3412
	<b>Subtotal</b>		<b>138356.2711</b>
<b>Railways</b>	Bridges	1,749	9951.8100
	Facilities	69	183.7470
	Segments	3,195	51229.5592
	Tunnels	3	1.8495
	<b>Subtotal</b>		<b>61366.9657</b>
<b>Light Rail</b>	Bridges	100	13.0980
	Facilities	194	3589.2500
	Segments	12	3867.6380
	Tunnels	0	0.0000
	<b>Subtotal</b>		<b>7469.9860</b>
<b>Bus</b>	Facilities	38	86.4088
	<b>Subtotal</b>		<b>86.4088</b>
<b>Ferry</b>	Facilities	25	33.2750
	<b>Subtotal</b>		<b>33.2750</b>
<b>Port</b>	Facilities	376	1433.2536
	<b>Subtotal</b>		<b>1433.2536</b>
<b>Airport</b>	Facilities	133	2506.4355
	Runways	168	1273.6476
	<b>Subtotal</b>		<b>3780.0831</b>
		<b>Total</b>	<b>212,526.20</b>

**Table 2: Utility System Lifeline Inventory**

System	Component	# Locations / Segments	Replacement value (millions of dollars)
<b>Potable Water</b>	Distribution Lines	NA	5217.5776
	Facilities	23	903.7620
	Pipelines	0	0.0000
		<b>Subtotal</b>	<b>6121.3396</b>
<b>Waste Water</b>	Distribution Lines	NA	3130.5466
	Facilities	192	33014.7456
	Pipelines	0	0.0000
		<b>Subtotal</b>	<b>36145.2922</b>
<b>Natural Gas</b>	Distribution Lines	NA	2087.0310
	Facilities	4	164.9741
	Pipelines	929	14632.9820
		<b>Subtotal</b>	<b>16884.9871</b>
<b>Oil Systems</b>	Facilities	16	1.8880
	Pipelines	0	0.0000
		<b>Subtotal</b>	<b>1.8880</b>
<b>Electrical Power</b>	Facilities	321	112071.8288
		<b>Subtotal</b>	<b>112071.8288</b>
<b>Communication</b>	Facilities	362	42.7160
		<b>Subtotal</b>	<b>42.7160</b>
	<b>Total</b>		<b>171,268.10</b>

## Earthquake Scenario

Hazus uses the following set of information to define the earthquake parameters used for the earthquake loss estimate provided in this report.



<b>Scenario Name</b>	gllegacycasc9p0expanded_peak_se
<b>Type of Earthquake</b>	User-defined
<b>Fault Name</b>	NA
<b>Historical Epicenter ID #</b>	NA
<b>Probabilistic Return Period</b>	NA
<b>Longitude of Epicenter</b>	NA
<b>Latitude of Epicenter</b>	NA
<b>Earthquake Magnitude</b>	9.00
<b>Depth (km)</b>	NA
<b>Rupture Length (Km)</b>	NA
<b>Rupture Orientation (degrees)</b>	NA
<b>Attenuation Function</b>	NA

## Direct Earthquake Damage

### Building Damage

Hazus estimates that about 24,102 buildings will be at least moderately damaged. This is over 1.00 % of the buildings in the region. There are an estimated 575 buildings that will be damaged beyond repair. The definition of the 'damage states' is provided in Volume 1: Chapter 5 of the Hazus technical manual. Table 3 below summarizes the expected damage by general occupancy for the buildings in the region. Table 4 below summarizes the expected damage by general building type.

### Damage Categories by General Occupancy Type

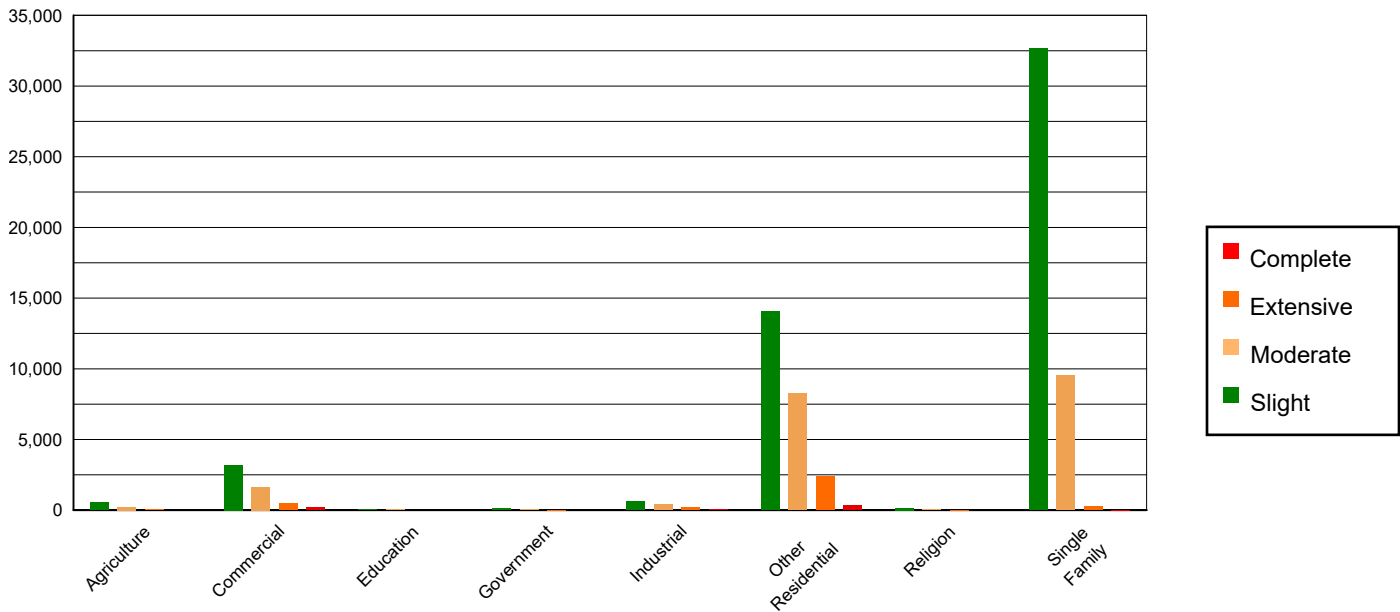


Table 3: Expected Building Damage by Occupancy

	None		Slight		Moderate		Extensive		Complete	
	Count	(%)	Count	(%)	Count	(%)	Count	(%)	Count	(%)
<b>Agriculture</b>	25595.47	0.71	524.16	1.02	214.28	1.06	41.87	1.26	2.21	0.38
<b>Commercial</b>	227829.06	6.32	3187.90	6.21	1648.02	8.16	460.00	13.81	174.02	30.23
<b>Education</b>	7372.82	0.20	73.69	0.14	30.75	0.15	3.71	0.11	1.03	0.18
<b>Government</b>	21229.28	0.59	108.85	0.21	48.34	0.24	12.86	0.39	4.65	0.81
<b>Industrial</b>	62993.78	1.75	604.53	1.18	385.52	1.91	167.83	5.04	73.33	12.74
<b>Other Residential</b>	461700.08	12.82	14023.18	27.34	8275.20	40.98	2363.76	70.97	308.78	53.64
<b>Religion</b>	13319.39	0.37	146.47	0.29	62.91	0.31	13.73	0.41	1.50	0.26
<b>Single Family</b>	2782452.26	77.24	32628.99	63.61	9530.68	47.19	266.99	8.02	10.09	1.75
<b>Total</b>	<b>3,602,492</b>		<b>51,298</b>		<b>20,196</b>		<b>3,331</b>		<b>576</b>	

**Table 4: Expected Building Damage by Building Type (All Design Levels)**

	None		Slight		Moderate		Extensive		Complete	
	Count	(%)	Count	(%)	Count	(%)	Count	(%)	Count	(%)
<b>Wood</b>	3109308.79	86.31	38706.79	75.46	12051.58	59.67	381.69	11.46	20.47	3.56
<b>Steel</b>	82211.95	2.28	1533.93	2.99	873.14	4.32	306.95	9.22	98.68	17.14
<b>Concrete</b>	91614.24	2.54	1191.26	2.32	803.34	3.98	272.23	8.17	154.58	26.86
<b>Precast</b>	46824.90	1.30	610.43	1.19	401.99	1.99	130.55	3.92	14.87	2.58
<b>RM</b>	143084.63	3.97	845.58	1.65	763.34	3.78	233.91	7.02	7.31	1.27
<b>URM</b>	41460.31	1.15	1155.70	2.25	127.32	0.63	61.08	1.83	101.10	17.56
<b>MH</b>	87987.32	2.44	7254.10	14.14	5174.98	25.62	1944.35	58.38	178.60	31.03
<b>Total</b>	<b>3,602,492</b>		<b>51,298</b>		<b>20,196</b>		<b>3,331</b>		<b>576</b>	

\*Note:

- RM Reinforced Masonry
- URM Unreinforced Masonry
- MH Manufactured Housing

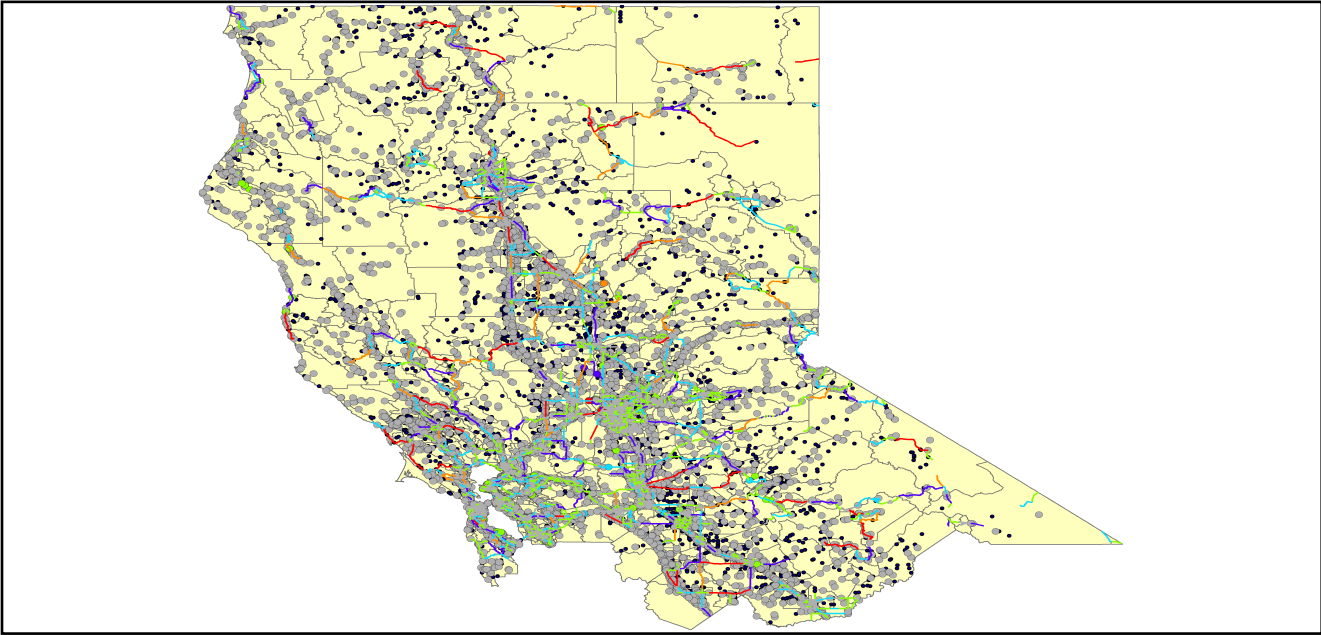
## Essential Facility Damage

Before the earthquake, the region had 28,912 hospital beds available for use. On the day of the earthquake, the model estimates that only 27,056 hospital beds (94.00%) are available for use by patients already in the hospital and those injured by the earthquake. After one week, 96.00% of the beds will be back in service. By 30 days, 99.00% will be operational.

**Table 5: Expected Damage to Essential Facilities**

Classification	Total	# Facilities		
		At Least Moderate Damage > 50%	Complete Damage > 50%	With Functionality > 50% on day 1
Hospitals	223	8	0	212
Schools	4,479	101	0	4,308
EOCs	79	1	0	77
PoliceStations	442	12	0	418
FireStations	1,492	30	0	1,419

Transportation Lifeline Damage



**Table 6: Expected Damage to the Transportation Systems**

System	Component	Number of Locations_				
		Locations/ Segments	With at Least Mod. Damage	With Complete Damage	With Functionality > 50 %	
					After Day 1	After Day 7
Highway	Segments	5,826	0	0	5,826	5,826
	Bridges	11,098	5	0	11,091	11,097
	Tunnels	47	0	0	47	47
Railways	Segments	3,195	0	0	3,195	3,195
	Bridges	1,749	0	0	1,749	1,749
	Tunnels	3	0	0	3	3
	Facilities	69	0	0	69	69
Light Rail	Segments	12	0	0	12	12
	Bridges	100	0	0	100	100
	Tunnels	0	0	0	0	0
	Facilities	194	0	0	194	194
Bus	Facilities	38	2	0	38	38
Ferry	Facilities	25	0	0	25	25
Port	Facilities	376	22	0	376	376
Airport	Facilities	133	4	0	133	133
	Runways	168	0	0	168	168

Table 6 provides damage estimates for the transportation system.

Note: Roadway segments, railroad tracks and light rail tracks are assumed to be damaged by ground failure only. If ground failure maps are not provided, damage estimates to these components will not be computed.

Tables 7-9 provide information on the damage to the utility lifeline systems. Table 7 provides damage to the utility system facilities. Table 8 provides estimates on the number of leaks and breaks by the pipelines of the utility systems. For electric power and potable water, Hazus performs a simplified system performance analysis. Table 9 provides a summary of the system performance information.

**Table 7 : Expected Utility System Facility Damage**

System	# of Locations				
	Total #	With at Least Moderate Damage	With Complete Damage	with Functionality > 50 %	
				After Day 1	After Day 7
Potable Water	23	0	0	23	23
Waste Water	192	12	0	178	192
Natural Gas	4	0	0	4	4
Oil Systems	16	0	0	16	16
Electrical Power	321	7	0	314	317
Communication	362	31	0	350	362

**Table 8 : Expected Utility System Pipeline Damage (Site Specific)**

System	Total Pipelines Length (miles)	Number of Leaks	Number of Breaks
Potable Water	162,103	5618	1404
Waste Water	97,262	2822	706
Natural Gas	2,582	0	0
Oil	0	0	0

**Table 9: Expected Potable Water and Electric Power System Performance**

	Total # of Households	Number of Households without Service				
		At Day 1	At Day 3	At Day 7	At Day 30	At Day 90
Potable Water	4,104,568	9,916	7,959	5,032	0	0
Electric Power		50,858	35,495	16,459	1,854	64

## Induced Earthquake Damage

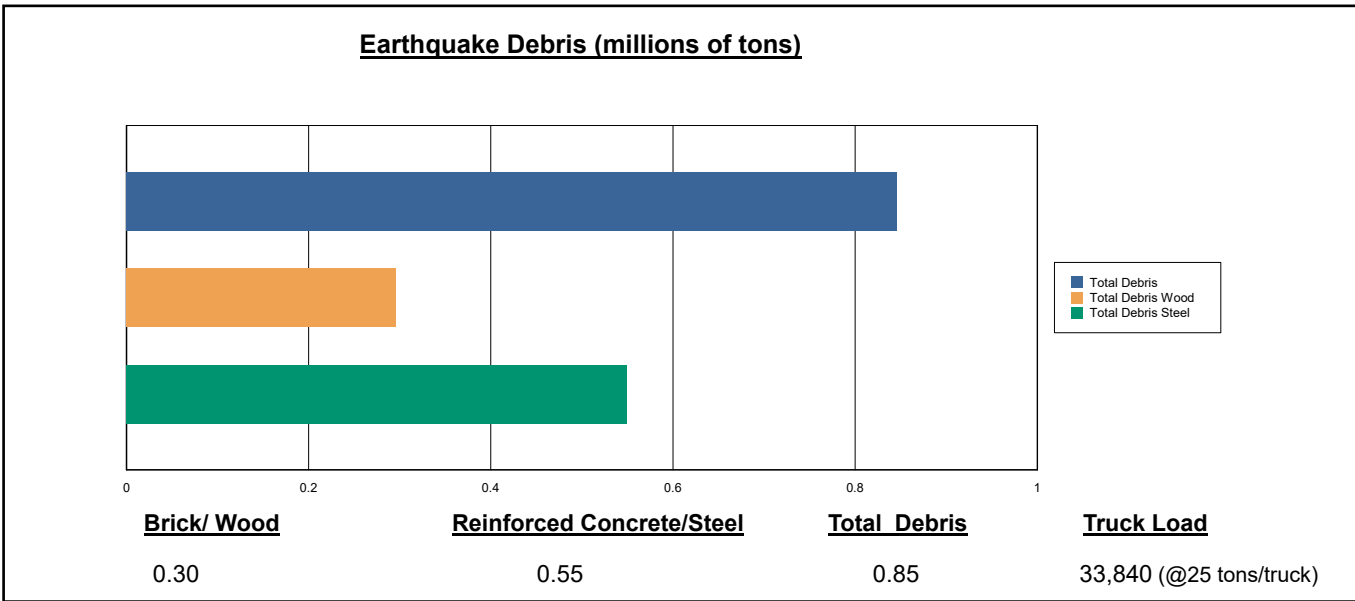
### Fire Following Earthquake

Fires often occur after an earthquake. Because of the number of fires and the lack of water to fight the fires, they can often burn out of control. Hazus uses a Monte Carlo simulation model to estimate the number of ignitions and the amount of burnt area. For this scenario, the model estimates that there will be 3 ignitions that will burn about 0.00 sq. mi (0.00 % of the region's total area.) The model also estimates that the fires will displace about 19 people and burn about 2 (millions of dollars) of building value.

### Debris Generation

Hazus estimates the amount of debris that will be generated by the earthquake. The model breaks the debris into two general categories: a) Brick/Wood and b) Reinforced Concrete/Steel. This distinction is made because of the different types of material handling equipment required to handle the debris.

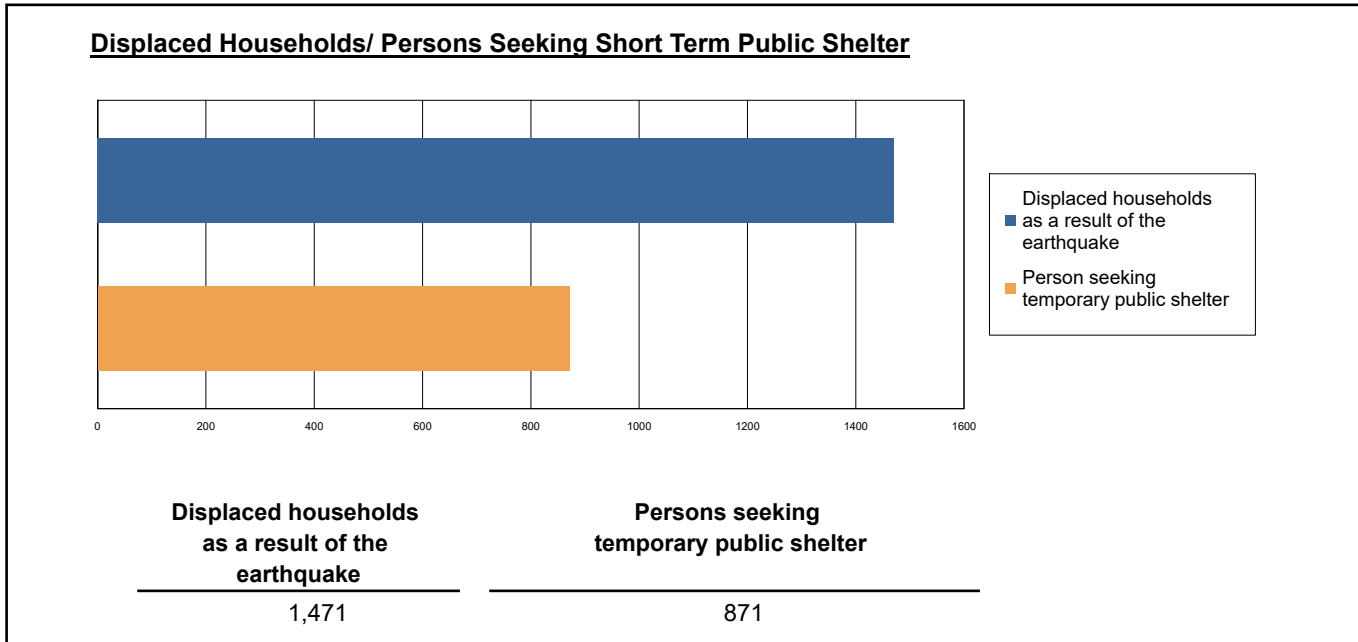
The model estimates that a total of 846,000 tons of debris will be generated. Of the total amount, Brick/Wood comprises 35.00% of the total, with the remainder being Reinforced Concrete/Steel. If the debris tonnage is converted to an estimated number of truckloads, it will require 33,840 truckloads (@25 tons/truck) to remove the debris generated by the earthquake.



## Social Impact

### Shelter Requirement

Hazus estimates the number of households that are expected to be displaced from their homes due to the earthquake and the number of displaced people that will require accommodations in temporary public shelters. The model estimates 1,471 households to be displaced due to the earthquake. Of these, 871 people (out of a total population of 11,411,682) will seek temporary shelter in public shelters.



### Casualties

Hazus estimates the number of people that will be injured and killed by the earthquake. The casualties are broken down into four (4) severity levels that describe the extent of the injuries. The levels are described as follows;

- Severity Level 1: Injuries will require medical attention but hospitalization is not needed.
- Severity Level 2: Injuries will require hospitalization but are not considered life-threatening
- Severity Level 3: Injuries will require hospitalization and can become life threatening if not promptly treated.
- Severity Level 4: Victims are killed by the earthquake.

The casualty estimates are provided for three (3) times of day: 2:00 AM, 2:00 PM and 5:00 PM. These times represent the periods of the day that different sectors of the community are at their peak occupancy loads. The 2:00 AM estimate considers that the residential occupancy load is maximum, the 2:00 PM estimate considers that the educational, commercial and industrial sector loads are maximum and 5:00 PM represents peak commute time.

Table 10 provides a summary of the casualties estimated for this earthquake

**Table 10: Casualty Estimates**

		Level 1	Level 2	Level 3	Level 4
<b>2 AM</b>	Commercial	3.64	0.82	0.12	0.24
	Commuting	0.03	0.04	0.07	0.01
	Educational	0.00	0.00	0.00	0.00
	Hotels	0.24	0.04	0.00	0.01
	Industrial	3.87	0.92	0.13	0.26
	Other-Residential	191.86	33.03	3.34	6.45
	Single Family	107.05	8.36	0.08	0.14
	<b>Total</b>	<b>307</b>	<b>43</b>	<b>4</b>	<b>7</b>
<b>2 PM</b>	Commercial	272.34	59.47	8.34	16.29
	Commuting	0.28	0.37	0.62	0.12
	Educational	101.76	17.07	1.74	3.34
	Hotels	0.05	0.01	0.00	0.00
	Industrial	28.49	6.77	0.96	1.87
	Other-Residential	67.63	11.88	1.26	2.35
	Single Family	36.90	2.94	0.03	0.05
	<b>Total</b>	<b>507</b>	<b>99</b>	<b>13</b>	<b>24</b>
<b>5 PM</b>	Commercial	184.91	39.95	5.56	10.73
	Commuting	4.78	6.51	10.83	2.11
	Educational	24.53	3.80	0.34	0.64
	Hotels	0.07	0.01	0.00	0.00
	Industrial	17.81	4.23	0.60	1.17
	Other-Residential	71.48	12.58	1.34	2.50
	Single Family	40.11	3.20	0.04	0.06
	<b>Total</b>	<b>344</b>	<b>70</b>	<b>19</b>	<b>17</b>

## Economic Loss

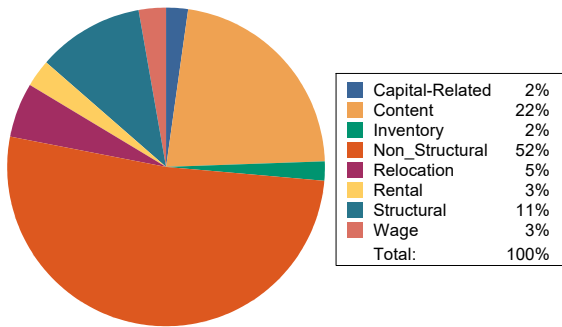
The total economic loss estimated for the earthquake is 9,889.34 (millions of dollars), which includes building and lifeline related losses based on the region's available inventory. The following three sections provide more detailed information about these losses.

## Building-Related Losses

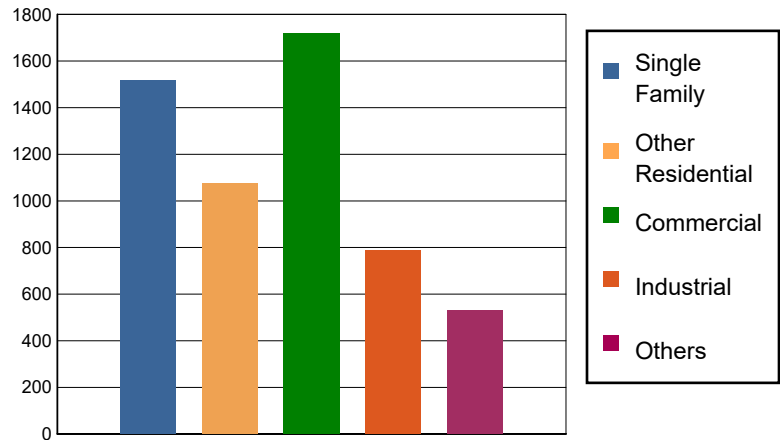
The building losses are broken into two categories: direct building losses and business interruption losses. The direct building losses are the estimated costs to repair or replace the damage caused to the building and its contents. The business interruption losses are the losses associated with inability to operate a business because of the damage sustained during the earthquake. Business interruption losses also include the temporary living expenses for those people displaced from their homes because of the earthquake.

The total building-related losses were 5,630.09 (millions of dollars); 13 % of the estimated losses were related to the business interruption of the region. By far, the largest loss was sustained by the residential occupancies which made up over 46 % of the total loss. Table 11 below provides a summary of the losses associated with the building damage.

Earthquake Losses by Loss Type (\$ millions)



Earthquake Losses by Occupancy Type (\$ millions)



**Table 11: Building-Related Economic Loss Estimates**  
(Millions of dollars)

Category	Area	Single Family	Other Residential	Commercial	Industrial	Others	Total
<b>Income Losses</b>							
	Wage	0.0000	20.8481	104.6617	10.5997	14.1760	150.2855
	Capital-Related	0.0000	8.8627	110.6002	6.5694	3.7513	129.7836
	Rental	23.2825	54.3987	70.6633	4.6841	7.3445	160.3731
	Relocation	85.6885	51.6284	96.5664	20.8108	52.8057	307.4998
	<b>Subtotal</b>	<b>108.9710</b>	<b>135.7379</b>	<b>382.4916</b>	<b>42.6640</b>	<b>78.0775</b>	<b>747.9420</b>
<b>Capital Stock Losses</b>							
	Structural	152.1955	117.9564	192.2480	93.3170	62.4288	618.1457
	Non_Structural	915.1485	660.3877	707.8457	364.8967	252.0242	2,900.3028
	Content	341.9170	162.6585	375.2450	252.6715	116.3364	1,248.8284
	Inventory	0.0000	0.0000	59.9432	35.7146	19.2110	114.8688
	<b>Subtotal</b>	<b>1409.2610</b>	<b>941.0026</b>	<b>1335.2819</b>	<b>746.5998</b>	<b>450.0004</b>	<b>4882.1457</b>
	<b>Total</b>	<b>1518.23</b>	<b>1076.74</b>	<b>1717.77</b>	<b>789.26</b>	<b>528.08</b>	<b>5630.09</b>

### Transportation and Utility Lifeline Losses

For the transportation and utility lifeline systems, Hazus computes the direct repair cost for each component only. There are no losses computed by Hazus for business interruption due to lifeline outages. Tables 12 & 13 provide a detailed breakdown in the expected lifeline losses.

**Table 12: Transportation System Economic Losses**  
(Millions of dollars)

System	Component	Inventory Value	Economic Loss	Loss Ratio (%)
Highway	Segments	84909.4961	0.0000	0.00
	Bridges	52459.4338	76.7112	0.15
	Tunnels	987.3412	0.2937	0.03
	<b>Subtotal</b>	<b>138356.2711</b>	<b>77.0049</b>	
Railways	Segments	51229.5592	0.0000	0.00
	Bridges	9951.8100	0.8394	0.01
	Tunnels	1.8495	0.0000	0.00
	Facilities	183.7470	2.6047	1.42
	<b>Subtotal</b>	<b>61366.9657</b>	<b>3.4441</b>	
Light Rail	Segments	3867.6380	0.0000	0.00
	Bridges	13.0980	0.0000	0.00
	Tunnels	0.0000	0.0000	0.00
	Facilities	3589.2500	34.5645	0.96
	<b>Subtotal</b>	<b>7469.9860</b>	<b>34.5645</b>	
Bus	Facilities	86.4088	4.2525	4.92
	<b>Subtotal</b>	<b>86.4088</b>	<b>4.2525</b>	
Ferry	Facilities	33.2750	0.4458	1.34
	<b>Subtotal</b>	<b>33.2750</b>	<b>0.4458</b>	
Port	Facilities	1433.2536	54.7038	3.82
	<b>Subtotal</b>	<b>1433.2536</b>	<b>54.7038</b>	
Airport	Facilities	2506.4355	77.0889	3.08
	Runways	1273.6476	0.0000	0.00
	<b>Subtotal</b>	<b>3780.0831</b>	<b>77.0889</b>	
<b>Total</b>		<b>212,526.24</b>	<b>251.50</b>	

**Table 13: Utility System Economic Losses**

(Millions of dollars)

System	Component	Inventory Value	Economic Loss	Loss Ratio (%)
Potable Water	Pipelines	0.0000	0.0000	0.00
	Facilities	903.7620	4.7776	0.53
	Distribution Lines	5217.5776	25.2809	0.48
	<b>Subtotal</b>	<b>6121.3396</b>	<b>30.0585</b>	
Waste Water	Pipelines	0.0000	0.0000	0.00
	Facilities	33014.7456	763.6457	2.31
	Distribution Lines	3130.5466	12.6993	0.41
	<b>Subtotal</b>	<b>36145.2922</b>	<b>776.3450</b>	
Natural Gas	Pipelines	14632.9820	0.0000	0.00
	Facilities	164.9741	3.9128	2.37
	Distribution Lines	2087.0310	4.3507	0.21
	<b>Subtotal</b>	<b>16884.9871</b>	<b>8.2635</b>	
Oil Systems	Pipelines	0.0000	0.0000	0.00
	Facilities	1.8880	0.0042	0.22
	<b>Subtotal</b>	<b>1.8880</b>	<b>0.0042</b>	
Electrical Power	Facilities	112071.8288	3190.7208	2.85
	<b>Subtotal</b>	<b>112071.8288</b>	<b>3190.7208</b>	
Communication	Facilities	42.7160	2.3525	5.51
	<b>Subtotal</b>	<b>42.7160</b>	<b>2.3525</b>	
	<b>Total</b>	<b>171,268.05</b>	<b>4,007.74</b>	

---

## Appendix A: County Listing for the Region

Alameda,CA

Alpine,CA

Amador,CA

Butte,CA

Calaveras,CA

Colusa,CA

Contra Costa,CA

Del Norte,CA

El Dorado,CA

Glenn,CA

Humboldt,CA

Lake,CA

Lassen,CA

Madera,CA

Marin,CA

Mariposa,CA

Mendocino,CA

Merced,CA

Modoc,CA

Mono,CA

Napa,CA

Nevada,CA

Placer,CA

Plumas,CA

Sacramento,CA

San Francisco,CA

San Joaquin,CA

San Mateo,CA

Shasta,CA

---

Sierra,CA

Siskiyou,CA

Solano,CA

Sonoma,CA

Stanislaus,CA

Sutter,CA

Tehama,CA

Trinity,CA

Tuolumne,CA

Yolo,CA

Yuba,CA

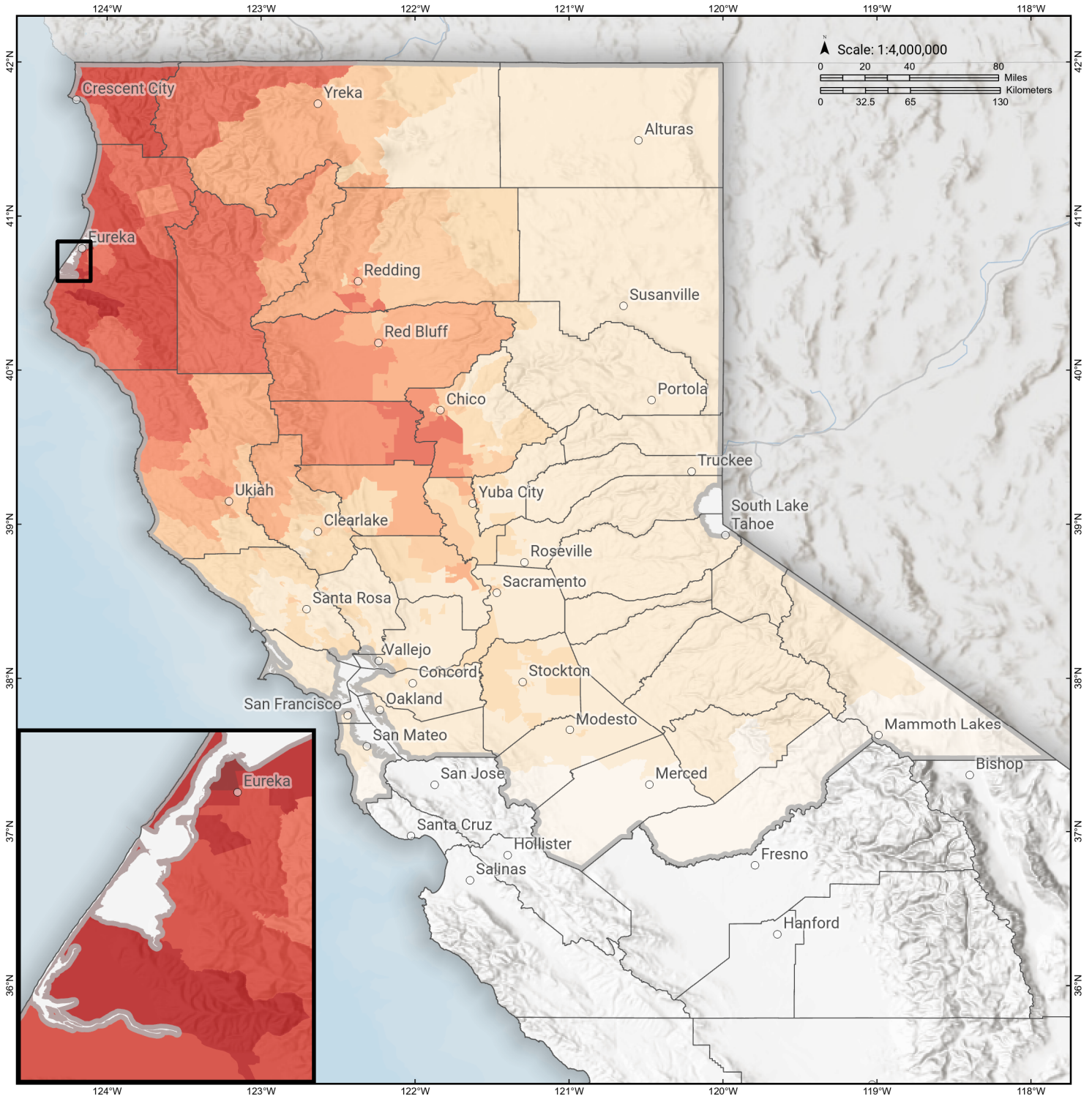
## Appendix B: Regional Population and Building Value Data

State	County Name	Population	Building Value (millions of dollars)		
			Residential	Non-Residential	Total
California	Alameda	1,682,353	209,951	122,639	332,590
	Alpine	1,204	721	139	861
	Amador	40,474	5,608	2,517	8,125
	Butte	211,632	25,875	16,639	42,514
	Calaveras	45,292	8,305	4,893	13,199
	Colusa	21,839	2,244	2,024	4,268
	Contra Costa	1,165,927	158,118	60,339	218,458
	Del Norte	27,743	5,004	1,876	6,881
	El Dorado	191,185	34,907	9,704	44,611
	Glenn	28,917	2,791	3,717	6,508
	Humboldt	136,463	19,361	8,683	28,044
	Lake	68,163	9,699	4,530	14,229
	Lassen	32,730	4,033	2,008	6,042
	Madera	156,255	18,025	9,641	27,667
	Marin	262,321	47,738	15,030	62,769
	Mariposa	17,131	3,299	1,141	4,441
	Mendocino	91,601	14,237	8,510	22,748
	Merced	281,202	25,194	26,098	51,292
	Modoc	8,700	1,435	1,468	2,904
	Mono	13,195	3,293	1,083	4,377
	Napa	138,019	20,517	13,045	33,563
	Nevada	102,241	17,908	6,108	24,016
	Placer	404,739	69,985	24,193	94,179
	Plumas	19,790	6,128	2,276	8,405
	Sacramento	1,585,055	179,811	83,911	263,723
	San Francisco	873,965	108,848	46,020	154,869
	San Joaquin	779,233	82,706	56,882	139,589
	San Mateo	764,442	110,372	44,995	155,368
	Shasta	182,155	21,572	15,715	37,288
	Sierra	3,236	596	419	1,015
	Siskiyou	44,076	6,856	4,758	11,615
	Solano	453,491	55,802	26,393	82,195
	Sonoma	488,863	68,827	35,781	104,609
	Stanislaus	552,878	62,937	37,511	100,449
	Sutter	99,633	10,618	6,448	17,066
	Tehama	65,829	7,705	5,113	12,818
	Trinity	16,112	2,209	1,485	3,694
	Tuolumne	55,620	8,964	3,507	12,471
	Yolo	216,403	24,130	18,343	42,473

---

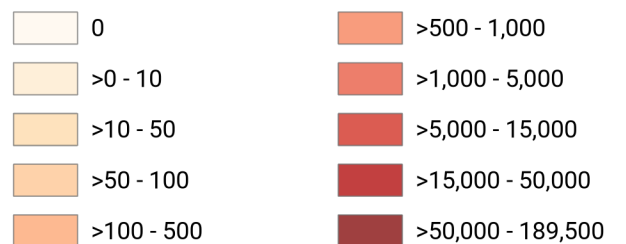
	Yuba	81,575	8,161	4,677	12,839
<b>Total Region</b>		<b>11,411,682</b>	<b>1,474,490</b>	<b>740,259</b>	<b>2,214,772</b>

# 2016 Cascadia M 9 scenario Debris Generated by Census Tract



**Study Region:** 2016 Cascadia M 9 scenario  
**Scenario:** gllegacycasc9p0expanded\_peak\_se

### Debris Generated (in tons)



# 2016 Cascadia M 9 scenario

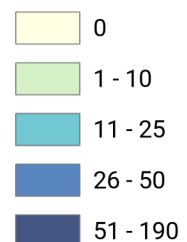
## Displaced Households by Census Tract



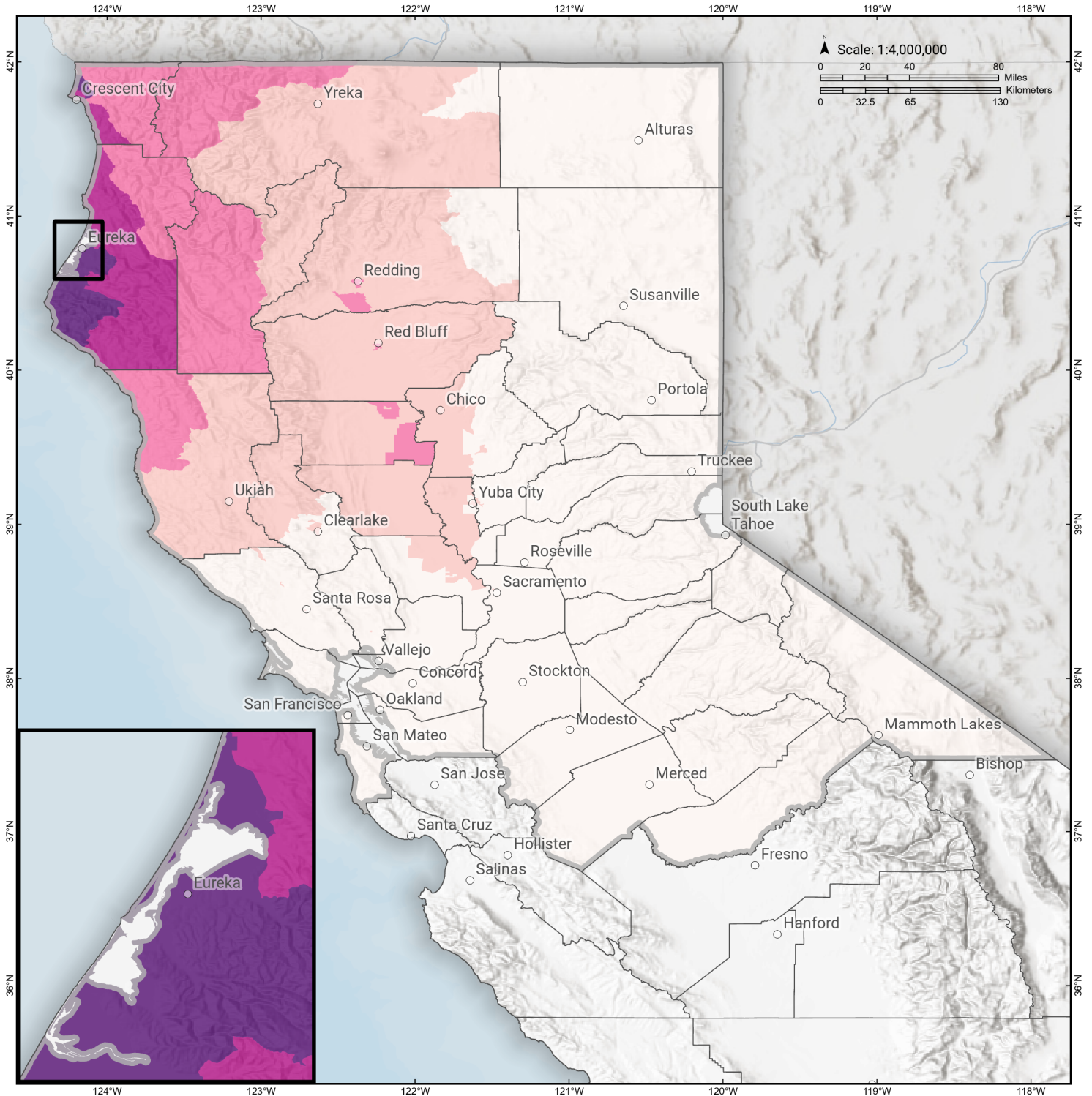
**Study Region:** 2016 Cascadia M 9 scenario  
**Scenario:** gllegacycasc9p0expanded\_peak\_se



### Displaced Households



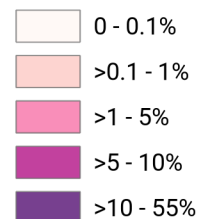
# 2016 Cascadia M 9 scenario Loss Ratio by Census Tract



**Study Region:** 2016 Cascadia M 9 scenario  
**Scenario:** gllegacycasc9p0expanded\_peak\_se

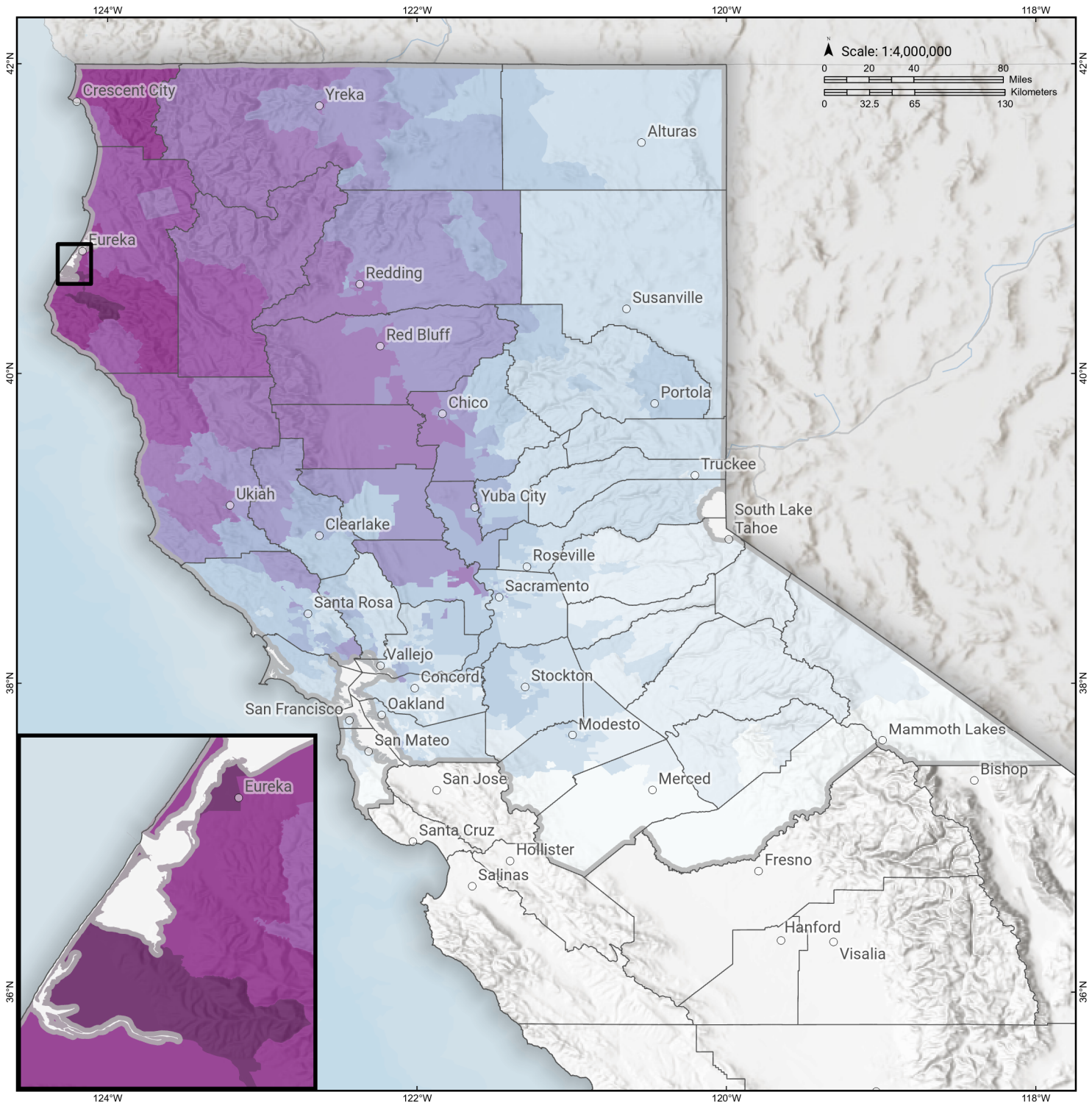


**Loss Ratio** (ratio of building related economic loss to exposed value of buildings)



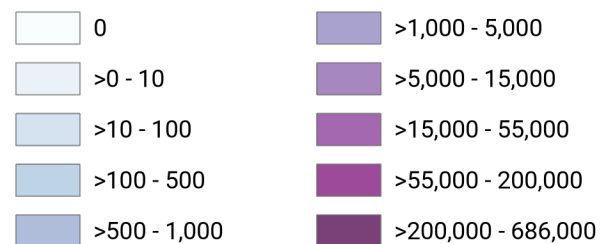
# 2016 Cascadia M 9 scenario

## Total Building Related Economic Loss by Census Tract



**Study Region:** 2016 Cascadia M 9 scenario  
**Scenario:** gllegacycasc9p0expanded\_peak\_se

**Economic Loss** (in thousands of USD \$)



## Building Damage by Count by General Occupancy

April 16, 2024

	# of Buildings					Total
	None	Slight	Moderate	Extensive	Complete	
<b>California</b>						
<b>Alameda</b>						
<i>Government</i>	10,517	10	1	0	0	10,528
<i>Agriculture</i>	421	1	0	0	0	422
<i>Commercial</i>	31,911	72	5	0	0	31,989
<i>Religion</i>	1,980	5	0	0	0	1,986
<i>Single Family</i>	344,163	10	0	0	0	344,173
<i>Other Residential</i>	61,335	58	3	0	0	61,396
<i>Education</i>	1,115	1	0	0	0	1,117
<i>Industrial</i>	10,188	16	1	0	0	10,205
<b>Alpine</b>						
<i>Education</i>	5	0	0	0	0	5
<i>Commercial</i>	48	0	0	0	0	48
<i>Government</i>	4	0	0	0	0	4
<i>Agriculture</i>	0	0	0	0	0	0
<i>Religion</i>	1	0	0	0	0	1
<i>Industrial</i>	14	0	0	0	0	14
<i>Single Family</i>	842	0	0	0	0	842
<i>Other Residential</i>	97	0	0	0	0	97
<b>Amador</b>						

	# of Buildings					Total
	None	Slight	Moderate	Extensive	Complete	
<i>Industrial</i>	235	0	0	0	0	235
<i>Single Family</i>	14,962	0	0	0	0	14,962
<i>Other Residential</i>	1,037	0	0	0	0	1,037
<i>Education</i>	23	0	0	0	0	23
<i>Government</i>	32	0	0	0	0	32
<i>Agriculture</i>	44	0	0	0	0	44
<i>Religion</i>	45	0	0	0	0	45
<i>Commercial</i>	1,368	0	0	0	0	1,368
<b>Butte</b>						
<i>Government</i>	138	6	2	0	0	147
<i>Religion</i>	507	20	4	0	0	531
<i>Agriculture</i>	472	25	12	2	0	510
<i>Commercial</i>	6,185	171	27	1	0	6,385
<i>Industrial</i>	1,442	62	16	1	0	1,522
<i>Single Family</i>	49,857	425	1	0	0	50,283
<i>Other Residential</i>	20,744	600	147	7	0	21,498
<i>Education</i>	171	1	0	0	0	172
<b>Calaveras</b>						
<i>Government</i>	84	0	0	0	0	84
<i>Other Residential</i>	2,559	0	0	0	0	2,559
<i>Education</i>	35	0	0	0	0	35
<i>Religion</i>	130	0	0	0	0	130
<i>Agriculture</i>	2,207	0	0	0	0	2,207
<i>Commercial</i>	1,413	0	0	0	0	1,413
<i>Industrial</i>	466	0	0	0	0	466

	# of Buildings					Total
	None	Slight	Moderate	Extensive	Complete	
<b>Colusa</b>						
Single Family	22,148	0	0	0	0	22,148
Agriculture	138	4	0	0	0	142
Religion	56	2	0	0	0	58
Commercial	757	32	5	0	0	794
Industrial	109	4	1	0	0	113
Other Residential	917	33	4	0	0	954
Single Family	5,877	77	0	0	0	5,954
Government	31	1	0	0	0	32
Education	32	1	0	0	0	33
<b>Contra Costa</b>						
Commercial	17,975	15	1	0	0	17,991
Agriculture	748	1	0	0	0	749
Religion	1,224	2	0	0	0	1,226
Single Family	281,919	16	0	0	0	281,935
Other Residential	29,100	23	1	0	0	29,124
Industrial	4,743	5	0	0	0	4,749
Government	5,020	4	0	0	0	5,024
Education	653	0	0	0	0	653
<b>Del Norte</b>						
Commercial	189	291	223	26	0	729
Agriculture	42	51	36	5	0	134
Government	4	6	7	2	0	18
Religion	12	20	18	3	0	53
Other Residential	453	872	1,784	732	21	3,861

	# of Buildings					Total
	None	Slight	Moderate	Extensive	Complete	
<i>Education</i>	19	9	3	0	0	31
<i>Industrial</i>	12	23	22	3	0	61
<i>Single Family</i>	2,443	3,078	591	5	0	6,117
<b>El Dorado</b>						
<i>Other Residential</i>	10,417	3	0	0	0	10,420
<i>Industrial</i>	1,199	0	0	0	0	1,199
<i>Education</i>	128	0	0	0	0	128
<i>Single Family</i>	71,424	0	0	0	0	71,424
<i>Commercial</i>	4,768	0	0	0	0	4,768
<i>Government</i>	100	0	0	0	0	100
<i>Religion</i>	180	0	0	0	0	180
<i>Agriculture</i>	161	0	0	0	0	161
<b>Glenn</b>						
<i>Other Residential</i>	1,600	415	130	7	0	2,152
<i>Government</i>	90	7	2	0	0	99
<i>Education</i>	34	1	0	0	0	35
<i>Industrial</i>	222	22	9	1	0	254
<i>Single Family</i>	7,016	397	5	0	0	7,417
<i>Commercial</i>	754	93	35	3	0	885
<i>Agriculture</i>	1,148	137	66	14	0	1,365
<i>Religion</i>	74	10	4	0	0	89
<b>Humboldt</b>						
<i>Government</i>	13	26	32	11	5	87
<i>Agriculture</i>	27	54	51	16	2	150
<i>Religion</i>	7	16	26	10	1	61

		# of Buildings					
		None	Slight	Moderate	Extensive	Complete	Total
<b>Lake</b>	<i>Commercial</i>	405	962	1,152	425	174	3,118
	<i>Single Family</i>	8,135	21,134	8,818	261	10	38,359
	<i>Other Residential</i>	1,421	4,655	4,141	1,553	288	12,058
	<i>Education</i>	50	46	26	4	1	127
	<i>Industrial</i>	73	146	287	161	73	740
	<i>Agriculture</i>	158	3	1	0	0	161
	<i>Single Family</i>	21,529	104	0	0	0	21,633
	<i>Other Residential</i>	13,945	599	56	0	0	14,601
	<i>Education</i>	68	0	0	0	0	68
	<i>Industrial</i>	348	5	1	0	0	354
<b>Lassen</b>	<i>Commercial</i>	2,057	31	4	0	0	2,091
	<i>Religion</i>	138	2	0	0	0	140
	<i>Government</i>	77	1	0	0	0	78
	<i>Other Residential</i>	2,623	4	0	0	0	2,627
	<i>Education</i>	40	0	0	0	0	40
	<i>Government</i>	22	0	0	0	0	22
	<i>Industrial</i>	140	0	0	0	0	140
	<i>Commercial</i>	912	1	0	0	0	913
	<i>Religion</i>	71	0	0	0	0	71
	<i>Agriculture</i>	37	0	0	0	0	37
<b>Madera</b>	<i>Single Family</i>	9,561	1	0	0	0	9,562
	<i>Commercial</i>	2,905	0	0	0	0	2,905

	# of Buildings					Total
	None	Slight	Moderate	Extensive	Complete	
<i>Religion</i>	119	0	0	0	0	119
<i>Government</i>	111	0	0	0	0	111
<i>Agriculture</i>	634	0	0	0	0	634
<i>Other Residential</i>	6,635	0	0	0	0	6,635
<i>Single Family</i>	38,912	0	0	0	0	38,912
<i>Education</i>	115	0	0	0	0	115
<i>Industrial</i>	903	0	0	0	0	903
<b>Marin</b>						
<i>Other Residential</i>	7,883	7	0	0	0	7,890
<i>Government</i>	143	0	0	0	0	143
<i>Education</i>	274	0	0	0	0	274
<i>Commercial</i>	8,260	10	0	0	0	8,270
<i>Religion</i>	319	0	0	0	0	319
<i>Agriculture</i>	190	0	0	0	0	190
<i>Single Family</i>	76,718	6	0	0	0	76,724
<i>Industrial</i>	1,532	3	0	0	0	1,535
<b>Mariposa</b>						
<i>Single Family</i>	8,084	0	0	0	0	8,084
<i>Other Residential</i>	307	0	0	0	0	307
<i>Education</i>	27	0	0	0	0	27
<i>Industrial</i>	94	0	0	0	0	94
<i>Commercial</i>	689	0	0	0	0	689
<i>Agriculture</i>	29	0	0	0	0	29
<i>Religion</i>	36	0	0	0	0	36

	# of Buildings					Total
	None	Slight	Moderate	Extensive	Complete	
<i>Government</i>	33	0	0	0	0	33
<b>Mendocino</b>						
<i>Commercial</i>	3,138	261	36	0	0	3,436
<i>Religion</i>	197	17	2	0	0	216
<i>Agriculture</i>	171	12	1	0	0	184
<i>Single Family</i>	24,261	1,687	21	0	0	25,969
<i>Other Residential</i>	5,155	1,362	522	21	0	7,060
<i>Government</i>	77	5	1	0	0	83
<i>Education</i>	98	3	0	0	0	101
<i>Industrial</i>	782	75	13	0	0	869
<b>Merced</b>						
<i>Education</i>	163	0	0	0	0	163
<i>Government</i>	171	0	0	0	0	171
<i>Commercial</i>	4,754	0	0	0	0	4,754
<i>Agriculture</i>	7,653	0	0	0	0	7,653
<i>Religion</i>	345	0	0	0	0	345
<i>Industrial</i>	1,022	0	0	0	0	1,022
<i>Single Family</i>	63,598	0	0	0	0	63,598
<i>Other Residential</i>	10,787	0	0	0	0	10,787
<b>Modoc</b>						
<i>Single Family</i>	3,740	0	0	0	0	3,740
<i>Industrial</i>	76	0	0	0	0	76
<i>Other Residential</i>	1,990	4	0	0	0	1,994
<i>Education</i>	20	0	0	0	0	20
<i>Religion</i>	36	0	0	0	0	36

		# of Buildings					
		None	Slight	Moderate	Extensive	Complete	Total
<b>Mono</b>	<i>Agriculture</i>	449	0	0	0	0	449
	<i>Government</i>	16	0	0	0	0	16
	<i>Commercial</i>	532	0	0	0	0	532
	<i>Government</i>	18	0	0	0	0	18
	<i>Education</i>	21	0	0	0	0	21
	<i>Religion</i>	32	0	0	0	0	32
	<i>Agriculture</i>	145	0	0	0	0	145
	<i>Commercial</i>	654	0	0	0	0	654
	<i>Single Family</i>	7,704	0	0	0	0	7,704
	<i>Industrial</i>	108	0	0	0	0	108
<b>Napa</b>	<i>Other Residential</i>	1,759	0	0	0	0	1,759
	<i>Commercial</i>	4,007	13	1	0	0	4,021
	<i>Agriculture</i>	348	1	0	0	0	349
	<i>Religion</i>	148	0	0	0	0	148
	<i>Single Family</i>	38,741	20	0	0	0	38,761
	<i>Other Residential</i>	6,921	53	4	0	0	6,978
	<i>Government</i>	103	0	0	0	0	103
	<i>Education</i>	132	0	0	0	0	132
	<i>Industrial</i>	1,362	5	0	0	0	1,367
	<b>Nevada</b>	<i>Commercial</i>	2,834	1	0	0	0
<i>Religion</i>		189	0	0	0	0	189
<i>Government</i>		60	0	0	0	0	60

	# of Buildings					Total
	None	Slight	Moderate	Extensive	Complete	
<i>Agriculture</i>	132	0	0	0	0	132
<i>Single Family</i>	43,280	0	0	0	0	43,280
<i>Other Residential</i>	6,376	8	0	0	0	6,384
<i>Education</i>	108	0	0	0	0	108
<i>Industrial</i>	1,161	0	0	0	0	1,161
<b>Placer</b>						
<i>Education</i>	231	0	0	0	0	231
<i>Commercial</i>	8,534	4	0	0	0	8,538
<i>Government</i>	377	0	0	0	0	377
<i>Agriculture</i>	258	0	0	0	0	258
<i>Religion</i>	382	0	0	0	0	382
<i>Industrial</i>	2,701	2	0	0	0	2,703
<i>Other Residential</i>	14,834	9	0	0	0	14,843
<i>Single Family</i>	134,702	17	0	0	0	134,719
<b>Plumas</b>						
<i>Commercial</i>	1,213	2	0	0	0	1,215
<i>Religion</i>	30	0	0	0	0	30
<i>Agriculture</i>	84	0	0	0	0	84
<i>Other Residential</i>	5,027	5	0	0	0	5,032
<i>Single Family</i>	9,875	2	0	0	0	9,877
<i>Government</i>	45	0	0	0	0	45
<i>Education</i>	26	0	0	0	0	26
<i>Industrial</i>	184	0	0	0	0	184
<b>Sacramento</b>						
<i>Single Family</i>	386,776	63	1	0	0	386,840

	# of Buildings					Total
	None	Slight	Moderate	Extensive	Complete	
<i>Industrial</i>	6,749	6	0	0	0	6,756
<i>Other Residential</i>	56,367	45	2	0	0	56,413
<i>Education</i>	829	0	0	0	0	829
<i>Agriculture</i>	620	1	0	0	0	621
<i>Religion</i>	1,697	5	0	0	0	1,702
<i>Government</i>	611	7	1	0	0	619
<i>Commercial</i>	26,238	53	4	0	0	26,295
<b>San Francisco</b>						
<i>Single Family</i>	150,460	227	16	0	0	150,703
<i>Other Residential</i>	44,025	461	43	1	0	44,529
<i>Government</i>	278	10	1	0	0	289
<i>Education</i>	569	3	0	0	0	572
<i>Industrial</i>	3,826	31	3	0	0	3,860
<i>Commercial</i>	20,899	407	38	0	0	21,344
<i>Religion</i>	1,329	14	2	0	0	1,345
<i>Agriculture</i>	161	1	0	0	0	162
<b>San Joaquin</b>						
<i>Commercial</i>	12,856	8	0	0	0	12,864
<i>Agriculture</i>	752	1	0	0	0	753
<i>Religion</i>	876	1	0	0	0	877
<i>Government</i>	303	1	0	0	0	304
<i>Single Family</i>	188,761	153	8	0	0	188,922
<i>Other Residential</i>	21,781	23	1	0	0	21,805
<i>Education</i>	395	0	0	0	0	395
<i>Industrial</i>	4,925	3	0	0	0	4,928

	# of Buildings					Total
	None	Slight	Moderate	Extensive	Complete	
<b>San Mateo</b>						
<i>Religion</i>	736	0	0	0	0	736
<i>Agriculture</i>	539	0	0	0	0	539
<i>Government</i>	299	0	0	0	0	299
<i>Commercial</i>	14,389	6	0	0	0	14,395
<i>Industrial</i>	4,471	1	0	0	0	4,472
<i>Other Residential</i>	22,448	5	0	0	0	22,453
<i>Single Family</i>	159,931	0	0	0	0	159,931
<i>Education</i>	489	0	0	0	0	489
<b>Shasta</b>						
<i>Agriculture</i>	3,035	161	35	4	0	3,235
<i>Religion</i>	62	3	0	0	0	66
<i>Commercial</i>	4,849	343	60	2	0	5,254
<i>Single Family</i>	49,353	2,436	27	0	0	51,815
<i>Industrial</i>	949	74	14	1	0	1,038
<i>Other Residential</i>	13,473	2,756	708	12	0	16,949
<i>Education</i>	133	2	0	0	0	136
<i>Government</i>	83	3	0	0	0	87
<b>Sierra</b>						
<i>Single Family</i>	1,858	0	0	0	0	1,858
<i>Other Residential</i>	153	0	0	0	0	153
<i>Industrial</i>	66	0	0	0	0	66
<i>Education</i>	14	0	0	0	0	14
<i>Commercial</i>	141	0	0	0	0	141
<i>Religion</i>	12	0	0	0	0	12

	# of Buildings					Total
	None	Slight	Moderate	Extensive	Complete	
<i>Agriculture</i>	7	0	0	0	0	7
<i>Government</i>	16	0	0	0	0	16
<b>Siskiyou</b>						
<i>Commercial</i>	1,512	69	10	0	0	1,591
<i>Religion</i>	121	5	1	0	0	127
<i>Agriculture</i>	187	12	2	0	0	201
<i>Single Family</i>	17,295	494	6	0	0	17,794
<i>Industrial</i>	459	19	3	0	0	480
<i>Government</i>	230	12	2	0	0	244
<i>Other Residential</i>	4,271	617	201	6	0	5,095
<i>Education</i>	75	1	0	0	0	76
<b>Solano</b>						
<i>Religion</i>	453	1	0	0	0	454
<i>Agriculture</i>	244	1	0	0	0	245
<i>Government</i>	152	0	0	0	0	152
<i>Commercial</i>	7,256	11	1	0	0	7,268
<i>Single Family</i>	120,935	33	0	0	0	120,968
<i>Industrial</i>	2,097	4	0	0	0	2,101
<i>Other Residential</i>	12,292	24	1	0	0	12,317
<i>Education</i>	225	0	0	0	0	225
<b>Sonoma</b>						
<i>Other Residential</i>	24,913	113	7	0	0	25,033
<i>Government</i>	318	1	0	0	0	319
<i>Education</i>	367	0	0	0	0	367
<i>Religion</i>	574	2	0	0	0	576

	# of Buildings					Total
	None	Slight	Moderate	Extensive	Complete	
<i>Commercial</i>	12,063	44	3	0	0	12,110
<i>Agriculture</i>	1,294	9	1	0	0	1,304
<i>Single Family</i>	141,926	102	0	0	0	142,028
<i>Industrial</i>	3,807	16	1	0	0	3,825
<b>Stanislaus</b>						
<i>Other Residential</i>	19,563	6	0	0	0	19,569
<i>Single Family</i>	142,724	0	0	0	0	142,724
<i>Education</i>	307	0	0	0	0	307
<i>Government</i>	680	0	0	0	0	680
<i>Industrial</i>	3,474	1	0	0	0	3,475
<i>Commercial</i>	10,365	4	0	0	0	10,369
<i>Religion</i>	456	0	0	0	0	456
<i>Agriculture</i>	1,239	0	0	0	0	1,239
<b>Sutter</b>						
<i>Other Residential</i>	3,056	53	4	0	0	3,113
<i>Industrial</i>	628	8	1	0	0	636
<i>Education</i>	62	0	0	0	0	62
<i>Government</i>	76	1	0	0	0	77
<i>Single Family</i>	24,397	115	0	0	0	24,512
<i>Commercial</i>	2,031	19	2	0	0	2,052
<i>Agriculture</i>	1,093	25	7	0	0	1,125
<i>Religion</i>	153	1	0	0	0	154
<b>Tehama</b>						
<i>Religion</i>	96	11	3	0	0	110
<i>Agriculture</i>	275	22	3	0	0	299

	# of Buildings					Total
	None	Slight	Moderate	Extensive	Complete	
<i>Industrial</i>	491	51	10	0	0	552
<i>Other Residential</i>	3,108	692	187	4	0	3,991
<i>Single Family</i>	19,965	1,228	28	1	0	21,222
<i>Education</i>	56	1	0	0	0	57
<i>Commercial</i>	1,134	115	20	1	0	1,270
<i>Government</i>	47	3	0	0	0	50
<b>Trinity</b>						
<i>Religion</i>	38	6	1	0	0	45
<i>Commercial</i>	868	118	18	1	0	1,005
<i>Agriculture</i>	4	0	0	0	0	4
<i>Single Family</i>	5,562	722	10	0	0	6,294
<i>Industrial</i>	43	11	3	0	0	58
<i>Other Residential</i>	572	438	324	20	0	1,354
<i>Education</i>	24	2	0	0	0	26
<i>Government</i>	7	0	0	0	0	8
<b>Tuolumne</b>						
<i>Education</i>	57	0	0	0	0	57
<i>Government</i>	143	0	0	0	0	143
<i>Commercial</i>	1,576	0	0	0	0	1,576
<i>Religion</i>	121	0	0	0	0	121
<i>Agriculture</i>	82	0	0	0	0	82
<i>Industrial</i>	383	0	0	0	0	383
<i>Other Residential</i>	4,962	0	0	0	0	4,962
<i>Single Family</i>	21,645	0	0	0	0	21,645
<b>Yolo</b>						

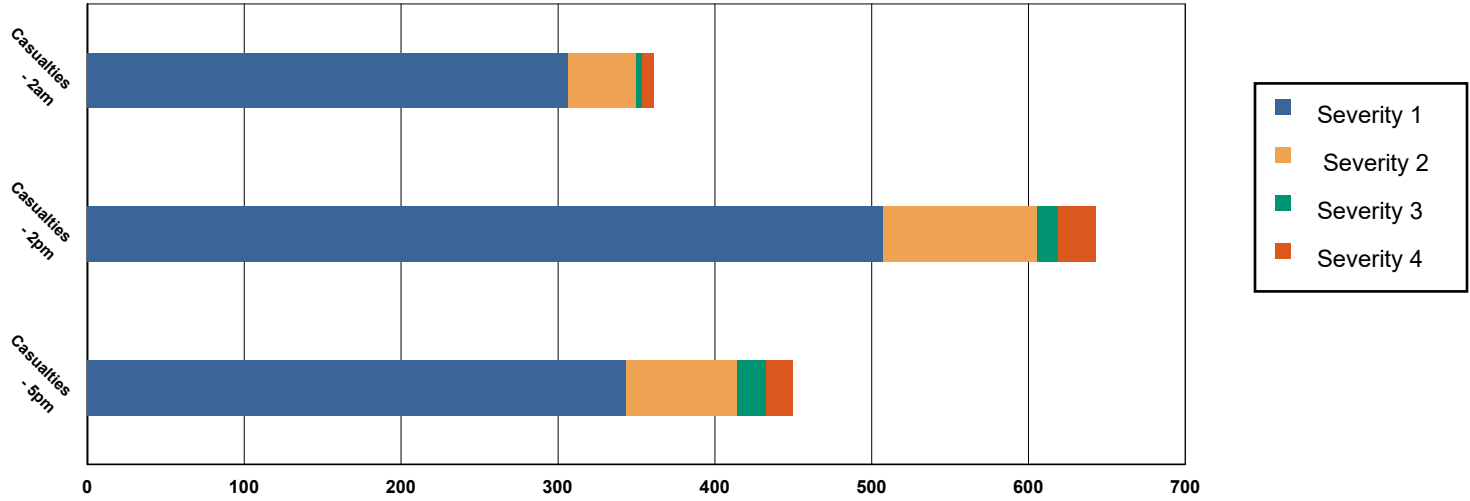
	# of Buildings					Total
	None	Slight	Moderate	Extensive	Complete	
<i>Industrial</i>	1,110	7	0	0	0	1,117
<i>Other Residential</i>	9,822	37	2	0	0	9,861
<i>Education</i>	131	0	0	0	0	131
<i>Government</i>	110	1	0	0	0	111
<i>Single Family</i>	42,529	60	0	0	0	42,589
<i>Commercial</i>	4,201	22	2	0	0	4,225
<i>Agriculture</i>	279	2	0	0	0	281
<i>Religion</i>	241	1	0	0	0	242
<b>Yuba</b>						
<i>Government</i>	590	1	0	0	0	591
<i>Education</i>	54	0	0	0	0	54
<i>Other Residential</i>	6,972	47	2	0	0	7,021
<i>Religion</i>	98	0	0	0	0	98
<i>Commercial</i>	1,189	9	1	0	0	1,199
<i>Agriculture</i>	91	1	0	0	0	92
<i>Single Family</i>	18,844	23	0	0	0	18,867
<i>Industrial</i>	401	3	0	0	0	404
<b>Total</b>	<b>3,602,492</b>	<b>51,298</b>	<b>20,196</b>	<b>3,331</b>	<b>576</b>	<b>3,677,892</b>
<b>Region Total</b>	<b>3,602,492</b>	<b>51,298</b>	<b>20,196</b>	<b>3,331</b>	<b>576</b>	<b>3,677,892</b>

Totals only reflect data for those census tracts/blocks included in the user's study region and will reflect the entire county/state only if all of the census blocks for that county/states were selected at the time of study region creation.

## Casualties Summary Report

April 16, 2024

### Region Total Casualties



### Injury Severity Level

Severity 1	Severity 2	Severity 3	Severity 4	Total
------------	------------	------------	------------	-------

#### California

##### Alameda

##### Casualties - 2am

	Severity 1	Severity 2	Severity 3	Severity 4	Total
Single Family	0	0	0	0	0
Hotels	0	0	0	0	0
Commuting	0	0	0	0	0
Educational	0	0	0	0	0
Industrial	0	0	0	0	0
Commercial	0	0	0	0	0
Other-Residential	1	0	0	0	1
<b>Total Casualties - 2am</b>	<b>1</b>	<b>0</b>	<b>0</b>	<b>0</b>	<b>1</b>

##### Casualties - 2pm

Industrial	0	0	0	0	0
Educational	0	0	0	0	0
Other-Residential	0	0	0	0	0
Single Family	0	0	0	0	0
Hotels	0	0	0	0	0
Commuting	0	0	0	0	0
Commercial	2	0	0	0	2

	Injury Severity Level				Total
	Severity 1	Severity 2	Severity 3	Severity 4	
<b>California</b>					
<b>Alameda</b>					
<b>Total Casualties - 2pm</b>	<b>2</b>	<b>0</b>	<b>0</b>	<b>0</b>	<b>2</b>
<b>Casualties - 5pm</b>					
<i>Commuting</i>	0	0	0	0	0
<i>Single Family</i>	0	0	0	0	0
<i>Commercial</i>	1	0	0	0	1
<i>Hotels</i>	0	0	0	0	0
<i>Educational</i>	0	0	0	0	0
<i>Industrial</i>	0	0	0	0	0
<i>Other-Residential</i>	0	0	0	0	0
<b>Total Casualties - 5pm</b>	<b>1</b>	<b>0</b>	<b>0</b>	<b>0</b>	<b>1</b>
<b>Alpine</b>					
<b>Casualties - 2am</b>					
<i>Industrial</i>	0	0	0	0	0
<i>Single Family</i>	0	0	0	0	0
<i>Commercial</i>	0	0	0	0	0
<i>Other-Residential</i>	0	0	0	0	0
<i>Hotels</i>	0	0	0	0	0
<i>Commuting</i>	0	0	0	0	0
<i>Educational</i>	0	0	0	0	0
<b>Total Casualties - 2am</b>	<b>0</b>	<b>0</b>	<b>0</b>	<b>0</b>	<b>0</b>
<b>Casualties - 2pm</b>					
<i>Educational</i>	0	0	0	0	0
<i>Other-Residential</i>	0	0	0	0	0
<i>Single Family</i>	0	0	0	0	0
<i>Hotels</i>	0	0	0	0	0
<i>Commercial</i>	0	0	0	0	0
<i>Commuting</i>	0	0	0	0	0
<i>Industrial</i>	0	0	0	0	0
<b>Total Casualties - 2pm</b>	<b>0</b>	<b>0</b>	<b>0</b>	<b>0</b>	<b>0</b>
<b>Casualties - 5pm</b>					
<i>Industrial</i>	0	0	0	0	0
<i>Other-Residential</i>	0	0	0	0	0
<i>Commuting</i>	0	0	0	0	0
<i>Commercial</i>	0	0	0	0	0
<i>Single Family</i>	0	0	0	0	0
<i>Educational</i>	0	0	0	0	0
<i>Hotels</i>	0	0	0	0	0
<b>Total Casualties - 5pm</b>	<b>0</b>	<b>0</b>	<b>0</b>	<b>0</b>	<b>0</b>
<b>Amador</b>					
<b>Casualties - 2am</b>					
<i>Commercial</i>	0	0	0	0	0

	Injury Severity Level				Total
	Severity 1	Severity 2	Severity 3	Severity 4	
<b>California</b>					
<b>Amador</b>					
<b>Casualties - 2am</b>					
<i>Other-Residential</i>	0	0	0	0	0
<i>Commuting</i>	0	0	0	0	0
<i>Educational</i>	0	0	0	0	0
<i>Single Family</i>	0	0	0	0	0
<i>Hotels</i>	0	0	0	0	0
<i>Industrial</i>	0	0	0	0	0
<b>Total Casualties - 2am</b>	<b>0</b>	<b>0</b>	<b>0</b>	<b>0</b>	<b>0</b>
<b>Casualties - 2pm</b>					
<i>Single Family</i>	0	0	0	0	0
<i>Hotels</i>	0	0	0	0	0
<i>Educational</i>	0	0	0	0	0
<i>Commuting</i>	0	0	0	0	0
<i>Commercial</i>	0	0	0	0	0
<i>Other-Residential</i>	0	0	0	0	0
<i>Industrial</i>	0	0	0	0	0
<b>Total Casualties - 2pm</b>	<b>0</b>	<b>0</b>	<b>0</b>	<b>0</b>	<b>0</b>
<b>Casualties - 5pm</b>					
<i>Commercial</i>	0	0	0	0	0
<i>Commuting</i>	0	0	0	0	0
<i>Other-Residential</i>	0	0	0	0	0
<i>Single Family</i>	0	0	0	0	0
<i>Educational</i>	0	0	0	0	0
<i>Hotels</i>	0	0	0	0	0
<i>Industrial</i>	0	0	0	0	0
<b>Total Casualties - 5pm</b>	<b>0</b>	<b>0</b>	<b>0</b>	<b>0</b>	<b>0</b>
<b>Butte</b>					
<b>Casualties - 2am</b>					
<i>Industrial</i>	0	0	0	0	0
<i>Commercial</i>	0	0	0	0	0
<i>Other-Residential</i>	2	0	0	0	2
<i>Single Family</i>	1	0	0	0	1
<i>Commuting</i>	0	0	0	0	0
<i>Educational</i>	0	0	0	0	0
<i>Hotels</i>	0	0	0	0	0
<b>Total Casualties - 2am</b>	<b>3</b>	<b>0</b>	<b>0</b>	<b>0</b>	<b>3</b>
<b>Casualties - 2pm</b>					
<i>Single Family</i>	0	0	0	0	0
<i>Educational</i>	1	0	0	0	1
<i>Commuting</i>	0	0	0	0	0
<i>Other-Residential</i>	1	0	0	0	1
<i>Hotels</i>	0	0	0	0	0

	Injury Severity Level				Total
	Severity 1	Severity 2	Severity 3	Severity 4	
<b>California</b>					
<b>Butte</b>					
<b>Casualties - 2pm</b>					
<i>Commercial</i>	3	0	0	0	3
<i>Industrial</i>	1	0	0	0	1
<b>Total Casualties - 2pm</b>	<b>5</b>	<b>0</b>	<b>0</b>	<b>0</b>	<b>5</b>
<b>Casualties - 5pm</b>					
<i>Industrial</i>	0	0	0	0	0
<i>Other-Residential</i>	1	0	0	0	1
<i>Single Family</i>	0	0	0	0	0
<i>Commercial</i>	2	0	0	0	2
<i>Commuting</i>	0	0	0	0	0
<i>Hotels</i>	0	0	0	0	0
<i>Educational</i>	0	0	0	0	0
<b>Total Casualties - 5pm</b>	<b>3</b>	<b>0</b>	<b>0</b>	<b>0</b>	<b>4</b>
<b>Calaveras</b>					
<b>Casualties - 2am</b>					
<i>Other-Residential</i>	0	0	0	0	0
<i>Commuting</i>	0	0	0	0	0
<i>Commercial</i>	0	0	0	0	0
<i>Single Family</i>	0	0	0	0	0
<i>Hotels</i>	0	0	0	0	0
<i>Educational</i>	0	0	0	0	0
<i>Industrial</i>	0	0	0	0	0
<b>Total Casualties - 2am</b>	<b>0</b>	<b>0</b>	<b>0</b>	<b>0</b>	<b>0</b>
<b>Casualties - 2pm</b>					
<i>Hotels</i>	0	0	0	0	0
<i>Single Family</i>	0	0	0	0	0
<i>Educational</i>	0	0	0	0	0
<i>Commuting</i>	0	0	0	0	0
<i>Commercial</i>	0	0	0	0	0
<i>Industrial</i>	0	0	0	0	0
<i>Other-Residential</i>	0	0	0	0	0
<b>Total Casualties - 2pm</b>	<b>0</b>	<b>0</b>	<b>0</b>	<b>0</b>	<b>0</b>
<b>Casualties - 5pm</b>					
<i>Industrial</i>	0	0	0	0	0
<i>Commercial</i>	0	0	0	0	0
<i>Other-Residential</i>	0	0	0	0	0
<i>Educational</i>	0	0	0	0	0
<i>Hotels</i>	0	0	0	0	0
<i>Commuting</i>	0	0	0	0	0
<i>Single Family</i>	0	0	0	0	0
<b>Total Casualties - 5pm</b>	<b>0</b>	<b>0</b>	<b>0</b>	<b>0</b>	<b>0</b>

	Injury Severity Level				Total
	Severity 1	Severity 2	Severity 3	Severity 4	
<b>California</b>					
<b>Colusa</b>					
<b>Casualties - 2am</b>					
<i>Other-Residential</i>	0	0	0	0	0
<i>Industrial</i>	0	0	0	0	0
<i>Single Family</i>	0	0	0	0	0
<i>Commercial</i>	0	0	0	0	0
<i>Educational</i>	0	0	0	0	0
<i>Commuting</i>	0	0	0	0	0
<i>Hotels</i>	0	0	0	0	0
<b>Total Casualties - 2am</b>	<b>0</b>	<b>0</b>	<b>0</b>	<b>0</b>	<b>0</b>
<b>Casualties - 2pm</b>					
<i>Hotels</i>	0	0	0	0	0
<i>Single Family</i>	0	0	0	0	0
<i>Educational</i>	0	0	0	0	0
<i>Commercial</i>	0	0	0	0	0
<i>Commuting</i>	0	0	0	0	0
<i>Other-Residential</i>	0	0	0	0	0
<i>Industrial</i>	0	0	0	0	0
<b>Total Casualties - 2pm</b>	<b>1</b>	<b>0</b>	<b>0</b>	<b>0</b>	<b>1</b>
<b>Casualties - 5pm</b>					
<i>Industrial</i>	0	0	0	0	0
<i>Commercial</i>	0	0	0	0	0
<i>Other-Residential</i>	0	0	0	0	0
<i>Commuting</i>	0	0	0	0	0
<i>Single Family</i>	0	0	0	0	0
<i>Educational</i>	0	0	0	0	0
<i>Hotels</i>	0	0	0	0	0
<b>Total Casualties - 5pm</b>	<b>0</b>	<b>0</b>	<b>0</b>	<b>0</b>	<b>0</b>
<b>Contra Costa</b>					
<b>Casualties - 2am</b>					
<i>Educational</i>	0	0	0	0	0
<i>Hotels</i>	0	0	0	0	0
<i>Industrial</i>	0	0	0	0	0
<i>Other-Residential</i>	0	0	0	0	0
<i>Single Family</i>	0	0	0	0	0
<i>Commercial</i>	0	0	0	0	0
<i>Commuting</i>	0	0	0	0	0
<b>Total Casualties - 2am</b>	<b>0</b>	<b>0</b>	<b>0</b>	<b>0</b>	<b>0</b>
<b>Casualties - 2pm</b>					
<i>Other-Residential</i>	0	0	0	0	0
<i>Industrial</i>	0	0	0	0	0
<i>Hotels</i>	0	0	0	0	0
<i>Single Family</i>	0	0	0	0	0

	Injury Severity Level				Total
	Severity 1	Severity 2	Severity 3	Severity 4	
<b>California</b>					
<b>Contra Costa</b>					
<b>Casualties - 2pm</b>					
<i>Educational</i>	0	0	0	0	0
<i>Commuting</i>	0	0	0	0	0
<i>Commercial</i>	0	0	0	0	0
<b>Total Casualties - 2pm</b>	<b>0</b>	<b>0</b>	<b>0</b>	<b>0</b>	<b>0</b>
<b>Casualties - 5pm</b>					
<i>Educational</i>	0	0	0	0	0
<i>Commuting</i>	0	0	0	0	0
<i>Single Family</i>	0	0	0	0	0
<i>Hotels</i>	0	0	0	0	0
<i>Industrial</i>	0	0	0	0	0
<i>Other-Residential</i>	0	0	0	0	0
<i>Commercial</i>	0	0	0	0	0
<b>Total Casualties - 5pm</b>	<b>0</b>	<b>0</b>	<b>0</b>	<b>0</b>	<b>0</b>
<b>Del Norte</b>					
<b>Casualties - 2am</b>					
<i>Hotels</i>	0	0	0	0	0
<i>Industrial</i>	0	0	0	0	0
<i>Commercial</i>	0	0	0	0	0
<i>Single Family</i>	7	0	0	0	8
<i>Other-Residential</i>	22	3	0	0	25
<i>Educational</i>	0	0	0	0	0
<i>Commuting</i>	0	0	0	0	0
<b>Total Casualties - 2am</b>	<b>30</b>	<b>3</b>	<b>0</b>	<b>0</b>	<b>33</b>
<b>Casualties - 2pm</b>					
<i>Commercial</i>	25	3	0	0	28
<i>Industrial</i>	0	0	0	0	0
<i>Other-Residential</i>	8	1	0	0	9
<i>Single Family</i>	3	0	0	0	3
<i>Educational</i>	4	0	0	0	4
<i>Commuting</i>	0	0	0	0	0
<i>Hotels</i>	0	0	0	0	0
<b>Total Casualties - 2pm</b>	<b>41</b>	<b>4</b>	<b>0</b>	<b>0</b>	<b>45</b>
<b>Casualties - 5pm</b>					
<i>Hotels</i>	0	0	0	0	0
<i>Educational</i>	0	0	0	0	0
<i>Industrial</i>	0	0	0	0	0
<i>Single Family</i>	3	0	0	0	3
<i>Other-Residential</i>	8	1	0	0	9
<i>Commuting</i>	0	0	0	0	1
<i>Commercial</i>	16	2	0	0	18

	Injury Severity Level				Total
	Severity 1	Severity 2	Severity 3	Severity 4	
<b>California</b>					
<b>Del Norte</b>					
<b>Total Casualties - 5pm</b>	<b>28</b>	<b>3</b>	<b>0</b>	<b>0</b>	<b>31</b>
<b>El Dorado</b>					
<b>Casualties - 2am</b>					
<i>Commuting</i>	0	0	0	0	0
<i>Educational</i>	0	0	0	0	0
<i>Single Family</i>	0	0	0	0	0
<i>Hotels</i>	0	0	0	0	0
<i>Other-Residential</i>	0	0	0	0	0
<i>Industrial</i>	0	0	0	0	0
<i>Commercial</i>	0	0	0	0	0
<b>Total Casualties - 2am</b>	<b>0</b>	<b>0</b>	<b>0</b>	<b>0</b>	<b>0</b>
<b>Casualties - 2pm</b>					
<i>Industrial</i>	0	0	0	0	0
<i>Other-Residential</i>	0	0	0	0	0
<i>Single Family</i>	0	0	0	0	0
<i>Hotels</i>	0	0	0	0	0
<i>Educational</i>	0	0	0	0	0
<i>Commuting</i>	0	0	0	0	0
<i>Commercial</i>	0	0	0	0	0
<b>Total Casualties - 2pm</b>	<b>0</b>	<b>0</b>	<b>0</b>	<b>0</b>	<b>0</b>
<b>Casualties - 5pm</b>					
<i>Commercial</i>	0	0	0	0	0
<i>Commuting</i>	0	0	0	0	0
<i>Single Family</i>	0	0	0	0	0
<i>Educational</i>	0	0	0	0	0
<i>Hotels</i>	0	0	0	0	0
<i>Industrial</i>	0	0	0	0	0
<i>Other-Residential</i>	0	0	0	0	0
<b>Total Casualties - 5pm</b>	<b>0</b>	<b>0</b>	<b>0</b>	<b>0</b>	<b>0</b>
<b>Glenn</b>					
<b>Casualties - 2am</b>					
<i>Hotels</i>	0	0	0	0	0
<i>Educational</i>	0	0	0	0	0
<i>Industrial</i>	0	0	0	0	0
<i>Other-Residential</i>	2	0	0	0	2
<i>Commercial</i>	0	0	0	0	0
<i>Commuting</i>	0	0	0	0	0
<i>Single Family</i>	1	0	0	0	1
<b>Total Casualties - 2am</b>	<b>2</b>	<b>0</b>	<b>0</b>	<b>0</b>	<b>3</b>
<b>Casualties - 2pm</b>					
<i>Industrial</i>	0	0	0	0	0

	Injury Severity Level				Total
	Severity 1	Severity 2	Severity 3	Severity 4	
<b>California</b>					
<b>Glenn</b>					
<b>Casualties - 2pm</b>					
<i>Other-Residential</i>	0	0	0	0	1
<i>Commuting</i>	0	0	0	0	0
<i>Commercial</i>	5	0	0	0	6
<i>Hotels</i>	0	0	0	0	0
<i>Single Family</i>	0	0	0	0	0
<i>Educational</i>	0	0	0	0	0
<b>Total Casualties - 2pm</b>	<b>7</b>	<b>1</b>	<b>0</b>	<b>0</b>	<b>7</b>
<b>Casualties - 5pm</b>					
<i>Educational</i>	0	0	0	0	0
<i>Commuting</i>	0	0	0	0	0
<i>Hotels</i>	0	0	0	0	0
<i>Single Family</i>	0	0	0	0	0
<i>Industrial</i>	0	0	0	0	0
<i>Commercial</i>	4	0	0	0	4
<i>Other-Residential</i>	1	0	0	0	1
<b>Total Casualties - 5pm</b>	<b>5</b>	<b>0</b>	<b>0</b>	<b>0</b>	<b>5</b>
<b>Humboldt</b>					
<b>Casualties - 2am</b>					
<i>Single Family</i>	89	8	0	0	97
<i>Commercial</i>	3	1	0	0	4
<i>Commuting</i>	0	0	0	0	0
<i>Hotels</i>	0	0	0	0	0
<i>Educational</i>	0	0	0	0	0
<i>Industrial</i>	3	1	0	0	5
<i>Other-Residential</i>	140	29	3	6	178
<b>Total Casualties - 2am</b>	<b>235</b>	<b>38</b>	<b>4</b>	<b>7</b>	<b>284</b>
<b>Casualties - 2pm</b>					
<i>Industrial</i>	26	7	1	2	35
<i>Hotels</i>	0	0	0	0	0
<i>Commercial</i>	213	55	8	16	292
<i>Other-Residential</i>	49	10	1	2	63
<i>Single Family</i>	31	3	0	0	34
<i>Educational</i>	93	16	2	3	114
<i>Commuting</i>	0	0	1	0	1
<b>Total Casualties - 2pm</b>	<b>412</b>	<b>91</b>	<b>13</b>	<b>24</b>	<b>540</b>
<b>Casualties - 5pm</b>					
<i>Commercial</i>	147	37	6	11	200
<i>Other-Residential</i>	53	11	1	2	67
<i>Commuting</i>	4	6	10	2	23
<i>Hotels</i>	0	0	0	0	0
<i>Single Family</i>	34	3	0	0	37

	Injury Severity Level				Total
	Severity 1	Severity 2	Severity 3	Severity 4	
<b>California</b>					
<b>Humboldt</b>					
<b>Casualties - 5pm</b>					
<i>Educational</i>	24	4	0	1	28
<i>Industrial</i>	16	4	1	1	22
<b>Total Casualties - 5pm</b>	<b>278</b>	<b>65</b>	<b>18</b>	<b>17</b>	<b>377</b>
<b>Lake</b>					
<b>Casualties - 2am</b>					
<i>Hotels</i>	0	0	0	0	0
<i>Industrial</i>	0	0	0	0	0
<i>Other-Residential</i>	1	0	0	0	1
<i>Commuting</i>	0	0	0	0	0
<i>Educational</i>	0	0	0	0	0
<i>Single Family</i>	0	0	0	0	0
<i>Commercial</i>	0	0	0	0	0
<b>Total Casualties - 2am</b>	<b>1</b>	<b>0</b>	<b>0</b>	<b>0</b>	<b>1</b>
<b>Casualties - 2pm</b>					
<i>Industrial</i>	0	0	0	0	0
<i>Single Family</i>	0	0	0	0	0
<i>Commercial</i>	0	0	0	0	0
<i>Other-Residential</i>	0	0	0	0	0
<i>Hotels</i>	0	0	0	0	0
<i>Educational</i>	0	0	0	0	0
<i>Commuting</i>	0	0	0	0	0
<b>Total Casualties - 2pm</b>	<b>1</b>	<b>0</b>	<b>0</b>	<b>0</b>	<b>1</b>
<b>Casualties - 5pm</b>					
<i>Other-Residential</i>	0	0	0	0	0
<i>Industrial</i>	0	0	0	0	0
<i>Commercial</i>	0	0	0	0	0
<i>Educational</i>	0	0	0	0	0
<i>Commuting</i>	0	0	0	0	0
<i>Single Family</i>	0	0	0	0	0
<i>Hotels</i>	0	0	0	0	0
<b>Total Casualties - 5pm</b>	<b>0</b>	<b>0</b>	<b>0</b>	<b>0</b>	<b>1</b>
<b>Lassen</b>					
<b>Casualties - 2am</b>					
<i>Hotels</i>	0	0	0	0	0
<i>Industrial</i>	0	0	0	0	0
<i>Educational</i>	0	0	0	0	0
<i>Single Family</i>	0	0	0	0	0
<i>Commercial</i>	0	0	0	0	0
<i>Commuting</i>	0	0	0	0	0
<i>Other-Residential</i>	0	0	0	0	0

	Injury Severity Level				Total
	Severity 1	Severity 2	Severity 3	Severity 4	
<b>California</b>					
<b>Lassen</b>					
<b>Total Casualties - 2am</b>	<b>0</b>	<b>0</b>	<b>0</b>	<b>0</b>	<b>0</b>
<b>Casualties - 2pm</b>					
<i>Industrial</i>	0	0	0	0	0
<i>Other-Residential</i>	0	0	0	0	0
<i>Commercial</i>	0	0	0	0	0
<i>Commuting</i>	0	0	0	0	0
<i>Single Family</i>	0	0	0	0	0
<i>Hotels</i>	0	0	0	0	0
<i>Educational</i>	0	0	0	0	0
<b>Total Casualties - 2pm</b>	<b>0</b>	<b>0</b>	<b>0</b>	<b>0</b>	<b>0</b>
<b>Casualties - 5pm</b>					
<i>Industrial</i>	0	0	0	0	0
<i>Single Family</i>	0	0	0	0	0
<i>Commercial</i>	0	0	0	0	0
<i>Hotels</i>	0	0	0	0	0
<i>Other-Residential</i>	0	0	0	0	0
<i>Commuting</i>	0	0	0	0	0
<i>Educational</i>	0	0	0	0	0
<b>Total Casualties - 5pm</b>	<b>0</b>	<b>0</b>	<b>0</b>	<b>0</b>	<b>0</b>
<b>Madera</b>					
<b>Casualties - 2am</b>					
<i>Hotels</i>	0	0	0	0	0
<i>Educational</i>	0	0	0	0	0
<i>Single Family</i>	0	0	0	0	0
<i>Commuting</i>	0	0	0	0	0
<i>Industrial</i>	0	0	0	0	0
<i>Commercial</i>	0	0	0	0	0
<i>Other-Residential</i>	0	0	0	0	0
<b>Total Casualties - 2am</b>	<b>0</b>	<b>0</b>	<b>0</b>	<b>0</b>	<b>0</b>
<b>Casualties - 2pm</b>					
<i>Industrial</i>	0	0	0	0	0
<i>Commercial</i>	0	0	0	0	0
<i>Other-Residential</i>	0	0	0	0	0
<i>Commuting</i>	0	0	0	0	0
<i>Single Family</i>	0	0	0	0	0
<i>Hotels</i>	0	0	0	0	0
<i>Educational</i>	0	0	0	0	0
<b>Total Casualties - 2pm</b>	<b>0</b>	<b>0</b>	<b>0</b>	<b>0</b>	<b>0</b>
<b>Casualties - 5pm</b>					
<i>Industrial</i>	0	0	0	0	0
<i>Commercial</i>	0	0	0	0	0

	Injury Severity Level				Total
	Severity 1	Severity 2	Severity 3	Severity 4	
<b>California</b>					
<b>Madera</b>					
<b>Casualties - 5pm</b>					
Single Family	0	0	0	0	0
Educational	0	0	0	0	0
Other-Residential	0	0	0	0	0
Commuting	0	0	0	0	0
Hotels	0	0	0	0	0
<b>Total Casualties - 5pm</b>	<b>0</b>	<b>0</b>	<b>0</b>	<b>0</b>	<b>0</b>
<b>Marin</b>					
<b>Casualties - 2am</b>					
Commercial	0	0	0	0	0
Commuting	0	0	0	0	0
Other-Residential	0	0	0	0	0
Educational	0	0	0	0	0
Single Family	0	0	0	0	0
Hotels	0	0	0	0	0
Industrial	0	0	0	0	0
<b>Total Casualties - 2am</b>	<b>0</b>	<b>0</b>	<b>0</b>	<b>0</b>	<b>0</b>
<b>Casualties - 2pm</b>					
Hotels	0	0	0	0	0
Commuting	0	0	0	0	0
Educational	0	0	0	0	0
Industrial	0	0	0	0	0
Other-Residential	0	0	0	0	0
Commercial	0	0	0	0	0
Single Family	0	0	0	0	0
<b>Total Casualties - 2pm</b>	<b>0</b>	<b>0</b>	<b>0</b>	<b>0</b>	<b>0</b>
<b>Casualties - 5pm</b>					
Commuting	0	0	0	0	0
Commercial	0	0	0	0	0
Other-Residential	0	0	0	0	0
Single Family	0	0	0	0	0
Industrial	0	0	0	0	0
Educational	0	0	0	0	0
Hotels	0	0	0	0	0
<b>Total Casualties - 5pm</b>	<b>0</b>	<b>0</b>	<b>0</b>	<b>0</b>	<b>0</b>
<b>Mariposa</b>					
<b>Casualties - 2am</b>					
Commuting	0	0	0	0	0
Single Family	0	0	0	0	0
Commercial	0	0	0	0	0
Hotels	0	0	0	0	0
Educational	0	0	0	0	0

	Injury Severity Level				Total
	Severity 1	Severity 2	Severity 3	Severity 4	
<b>California</b>					
<b>Mariposa</b>					
<b>Casualties - 2am</b>					
<i>Industrial</i>	0	0	0	0	0
<i>Other-Residential</i>	0	0	0	0	0
<b>Total Casualties - 2am</b>	<b>0</b>	<b>0</b>	<b>0</b>	<b>0</b>	<b>0</b>
<b>Casualties - 2pm</b>					
<i>Hotels</i>	0	0	0	0	0
<i>Industrial</i>	0	0	0	0	0
<i>Commercial</i>	0	0	0	0	0
<i>Other-Residential</i>	0	0	0	0	0
<i>Educational</i>	0	0	0	0	0
<i>Commuting</i>	0	0	0	0	0
<i>Single Family</i>	0	0	0	0	0
<b>Total Casualties - 2pm</b>	<b>0</b>	<b>0</b>	<b>0</b>	<b>0</b>	<b>0</b>
<b>Casualties - 5pm</b>					
<i>Other-Residential</i>	0	0	0	0	0
<i>Educational</i>	0	0	0	0	0
<i>Commuting</i>	0	0	0	0	0
<i>Hotels</i>	0	0	0	0	0
<i>Single Family</i>	0	0	0	0	0
<i>Commercial</i>	0	0	0	0	0
<i>Industrial</i>	0	0	0	0	0
<b>Total Casualties - 5pm</b>	<b>0</b>	<b>0</b>	<b>0</b>	<b>0</b>	<b>0</b>
<b>Mendocino</b>					
<b>Casualties - 2am</b>					
<i>Educational</i>	0	0	0	0	0
<i>Hotels</i>	0	0	0	0	0
<i>Commuting</i>	0	0	0	0	0
<i>Industrial</i>	0	0	0	0	0
<i>Other-Residential</i>	4	0	0	0	5
<i>Single Family</i>	2	0	0	0	2
<i>Commercial</i>	0	0	0	0	0
<b>Total Casualties - 2am</b>	<b>6</b>	<b>0</b>	<b>0</b>	<b>0</b>	<b>7</b>
<b>Casualties - 2pm</b>					
<i>Industrial</i>	0	0	0	0	0
<i>Other-Residential</i>	1	0	0	0	2
<i>Commercial</i>	2	0	0	0	2
<i>Single Family</i>	1	0	0	0	1
<i>Commuting</i>	0	0	0	0	0
<i>Hotels</i>	0	0	0	0	0
<i>Educational</i>	1	0	0	0	1
<b>Total Casualties - 2pm</b>	<b>5</b>	<b>0</b>	<b>0</b>	<b>0</b>	<b>5</b>

## Injury Severity Level

Severity 1      Severity 2      Severity 3      Severity 4      Total

### California

#### Mendocino

##### Casualties - 5pm

	Severity 1	Severity 2	Severity 3	Severity 4	Total
<i>Hotels</i>	0	0	0	0	0
<i>Single Family</i>	1	0	0	0	1
<i>Educational</i>	0	0	0	0	0
<i>Commuting</i>	0	0	0	0	0
<i>Commercial</i>	1	0	0	0	1
<i>Other-Residential</i>	1	0	0	0	2
<i>Industrial</i>	0	0	0	0	0
<b>Total Casualties - 5pm</b>	<b>4</b>	<b>0</b>	<b>0</b>	<b>0</b>	<b>4</b>

#### Merced

##### Casualties - 2am

<i>Hotels</i>	0	0	0	0	0
<i>Industrial</i>	0	0	0	0	0
<i>Commercial</i>	0	0	0	0	0
<i>Single Family</i>	0	0	0	0	0
<i>Other-Residential</i>	0	0	0	0	0
<i>Educational</i>	0	0	0	0	0
<i>Commuting</i>	0	0	0	0	0
<b>Total Casualties - 2am</b>	<b>0</b>	<b>0</b>	<b>0</b>	<b>0</b>	<b>0</b>

##### Casualties - 2pm

<i>Other-Residential</i>	0	0	0	0	0
<i>Industrial</i>	0	0	0	0	0
<i>Commercial</i>	0	0	0	0	0
<i>Commuting</i>	0	0	0	0	0
<i>Hotels</i>	0	0	0	0	0
<i>Educational</i>	0	0	0	0	0
<i>Single Family</i>	0	0	0	0	0
<b>Total Casualties - 2pm</b>	<b>0</b>	<b>0</b>	<b>0</b>	<b>0</b>	<b>0</b>

##### Casualties - 5pm

<i>Industrial</i>	0	0	0	0	0
<i>Hotels</i>	0	0	0	0	0
<i>Educational</i>	0	0	0	0	0
<i>Commuting</i>	0	0	0	0	0
<i>Single Family</i>	0	0	0	0	0
<i>Commercial</i>	0	0	0	0	0
<i>Other-Residential</i>	0	0	0	0	0
<b>Total Casualties - 5pm</b>	<b>0</b>	<b>0</b>	<b>0</b>	<b>0</b>	<b>0</b>

#### Modoc

##### Casualties - 2am

<i>Industrial</i>	0	0	0	0	0
<i>Other-Residential</i>	0	0	0	0	0
<i>Commuting</i>	0	0	0	0	0

	Injury Severity Level				Total
	Severity 1	Severity 2	Severity 3	Severity 4	
<b>California</b>					
<b>Modoc</b>					
<b>Casualties - 2am</b>					
Commercial	0	0	0	0	0
Single Family	0	0	0	0	0
Hotels	0	0	0	0	0
Educational	0	0	0	0	0
<b>Total Casualties - 2am</b>	<b>0</b>	<b>0</b>	<b>0</b>	<b>0</b>	<b>0</b>
<b>Casualties - 2pm</b>					
Commercial	0	0	0	0	0
Commuting	0	0	0	0	0
Educational	0	0	0	0	0
Single Family	0	0	0	0	0
Other-Residential	0	0	0	0	0
Hotels	0	0	0	0	0
Industrial	0	0	0	0	0
<b>Total Casualties - 2pm</b>	<b>0</b>	<b>0</b>	<b>0</b>	<b>0</b>	<b>0</b>
<b>Casualties - 5pm</b>					
Industrial	0	0	0	0	0
Educational	0	0	0	0	0
Commuting	0	0	0	0	0
Other-Residential	0	0	0	0	0
Hotels	0	0	0	0	0
Single Family	0	0	0	0	0
Commercial	0	0	0	0	0
<b>Total Casualties - 5pm</b>	<b>0</b>	<b>0</b>	<b>0</b>	<b>0</b>	<b>0</b>
<b>Mono</b>					
<b>Casualties - 2am</b>					
Other-Residential	0	0	0	0	0
Industrial	0	0	0	0	0
Commercial	0	0	0	0	0
Single Family	0	0	0	0	0
Educational	0	0	0	0	0
Commuting	0	0	0	0	0
Hotels	0	0	0	0	0
<b>Total Casualties - 2am</b>	<b>0</b>	<b>0</b>	<b>0</b>	<b>0</b>	<b>0</b>
<b>Casualties - 2pm</b>					
Commercial	0	0	0	0	0
Commuting	0	0	0	0	0
Other-Residential	0	0	0	0	0
Educational	0	0	0	0	0
Single Family	0	0	0	0	0
Hotels	0	0	0	0	0
Industrial	0	0	0	0	0

	Injury Severity Level				Total
	Severity 1	Severity 2	Severity 3	Severity 4	
<b>California</b>					
<b>Mono</b>					
<b>Total Casualties - 2pm</b>	<b>0</b>	<b>0</b>	<b>0</b>	<b>0</b>	<b>0</b>
<b>Casualties - 5pm</b>					
<i>Industrial</i>	0	0	0	0	0
<i>Commuting</i>	0	0	0	0	0
<i>Hotels</i>	0	0	0	0	0
<i>Other-Residential</i>	0	0	0	0	0
<i>Educational</i>	0	0	0	0	0
<i>Single Family</i>	0	0	0	0	0
<i>Commercial</i>	0	0	0	0	0
<b>Total Casualties - 5pm</b>	<b>0</b>	<b>0</b>	<b>0</b>	<b>0</b>	<b>0</b>
<b>Napa</b>					
<b>Casualties - 2am</b>					
<i>Commercial</i>	0	0	0	0	0
<i>Other-Residential</i>	0	0	0	0	0
<i>Educational</i>	0	0	0	0	0
<i>Single Family</i>	0	0	0	0	0
<i>Commuting</i>	0	0	0	0	0
<i>Hotels</i>	0	0	0	0	0
<i>Industrial</i>	0	0	0	0	0
<b>Total Casualties - 2am</b>	<b>0</b>	<b>0</b>	<b>0</b>	<b>0</b>	<b>0</b>
<b>Casualties - 2pm</b>					
<i>Educational</i>	0	0	0	0	0
<i>Hotels</i>	0	0	0	0	0
<i>Commuting</i>	0	0	0	0	0
<i>Industrial</i>	0	0	0	0	0
<i>Other-Residential</i>	0	0	0	0	0
<i>Single Family</i>	0	0	0	0	0
<i>Commercial</i>	0	0	0	0	0
<b>Total Casualties - 2pm</b>	<b>0</b>	<b>0</b>	<b>0</b>	<b>0</b>	<b>0</b>
<b>Casualties - 5pm</b>					
<i>Commercial</i>	0	0	0	0	0
<i>Single Family</i>	0	0	0	0	0
<i>Other-Residential</i>	0	0	0	0	0
<i>Commuting</i>	0	0	0	0	0
<i>Industrial</i>	0	0	0	0	0
<i>Educational</i>	0	0	0	0	0
<i>Hotels</i>	0	0	0	0	0
<b>Total Casualties - 5pm</b>	<b>0</b>	<b>0</b>	<b>0</b>	<b>0</b>	<b>0</b>
<b>Nevada</b>					
<b>Casualties - 2am</b>					
<i>Single Family</i>	0	0	0	0	0

	Injury Severity Level				Total
	Severity 1	Severity 2	Severity 3	Severity 4	
<b>California</b>					
<b>Nevada</b>					
<b>Casualties - 2am</b>					
Commercial	0	0	0	0	0
Commuting	0	0	0	0	0
Hotels	0	0	0	0	0
Educational	0	0	0	0	0
Industrial	0	0	0	0	0
Other-Residential	0	0	0	0	0
<b>Total Casualties - 2am</b>	<b>0</b>	<b>0</b>	<b>0</b>	<b>0</b>	<b>0</b>
<b>Casualties - 2pm</b>					
Hotels	0	0	0	0	0
Industrial	0	0	0	0	0
Commercial	0	0	0	0	0
Single Family	0	0	0	0	0
Other-Residential	0	0	0	0	0
Educational	0	0	0	0	0
Commuting	0	0	0	0	0
<b>Total Casualties - 2pm</b>	<b>0</b>	<b>0</b>	<b>0</b>	<b>0</b>	<b>0</b>
<b>Casualties - 5pm</b>					
Commuting	0	0	0	0	0
Hotels	0	0	0	0	0
Other-Residential	0	0	0	0	0
Educational	0	0	0	0	0
Single Family	0	0	0	0	0
Commercial	0	0	0	0	0
Industrial	0	0	0	0	0
<b>Total Casualties - 5pm</b>	<b>0</b>	<b>0</b>	<b>0</b>	<b>0</b>	<b>0</b>
<b>Placer</b>					
<b>Casualties - 2am</b>					
Hotels	0	0	0	0	0
Educational	0	0	0	0	0
Industrial	0	0	0	0	0
Other-Residential	0	0	0	0	0
Commercial	0	0	0	0	0
Single Family	0	0	0	0	0
Commuting	0	0	0	0	0
<b>Total Casualties - 2am</b>	<b>0</b>	<b>0</b>	<b>0</b>	<b>0</b>	<b>0</b>
<b>Casualties - 2pm</b>					
Other-Residential	0	0	0	0	0
Industrial	0	0	0	0	0
Commercial	0	0	0	0	0
Single Family	0	0	0	0	0
Educational	0	0	0	0	0

	Injury Severity Level				Total
	Severity 1	Severity 2	Severity 3	Severity 4	
<b>California</b>					
<b>Placer</b>					
<b>Casualties - 2pm</b>					
<i>Commuting</i>	0	0	0	0	0
<i>Hotels</i>	0	0	0	0	0
<b>Total Casualties - 2pm</b>	<b>0</b>	<b>0</b>	<b>0</b>	<b>0</b>	<b>0</b>
<b>Casualties - 5pm</b>					
<i>Single Family</i>	0	0	0	0	0
<i>Hotels</i>	0	0	0	0	0
<i>Commuting</i>	0	0	0	0	0
<i>Educational</i>	0	0	0	0	0
<i>Commercial</i>	0	0	0	0	0
<i>Industrial</i>	0	0	0	0	0
<i>Other-Residential</i>	0	0	0	0	0
<b>Total Casualties - 5pm</b>	<b>0</b>	<b>0</b>	<b>0</b>	<b>0</b>	<b>0</b>
<b>Plumas</b>					
<b>Casualties - 2am</b>					
<i>Educational</i>	0	0	0	0	0
<i>Single Family</i>	0	0	0	0	0
<i>Commuting</i>	0	0	0	0	0
<i>Hotels</i>	0	0	0	0	0
<i>Industrial</i>	0	0	0	0	0
<i>Other-Residential</i>	0	0	0	0	0
<i>Commercial</i>	0	0	0	0	0
<b>Total Casualties - 2am</b>	<b>0</b>	<b>0</b>	<b>0</b>	<b>0</b>	<b>0</b>
<b>Casualties - 2pm</b>					
<i>Industrial</i>	0	0	0	0	0
<i>Single Family</i>	0	0	0	0	0
<i>Commercial</i>	0	0	0	0	0
<i>Other-Residential</i>	0	0	0	0	0
<i>Hotels</i>	0	0	0	0	0
<i>Educational</i>	0	0	0	0	0
<i>Commuting</i>	0	0	0	0	0
<b>Total Casualties - 2pm</b>	<b>0</b>	<b>0</b>	<b>0</b>	<b>0</b>	<b>0</b>
<b>Casualties - 5pm</b>					
<i>Other-Residential</i>	0	0	0	0	0
<i>Single Family</i>	0	0	0	0	0
<i>Educational</i>	0	0	0	0	0
<i>Hotels</i>	0	0	0	0	0
<i>Commuting</i>	0	0	0	0	0
<i>Commercial</i>	0	0	0	0	0
<i>Industrial</i>	0	0	0	0	0
<b>Total Casualties - 5pm</b>	<b>0</b>	<b>0</b>	<b>0</b>	<b>0</b>	<b>0</b>

	Injury Severity Level				Total
	Severity 1	Severity 2	Severity 3	Severity 4	
<b>California</b>					
<b>Sacramento</b>					
<b>Casualties - 2am</b>					
<i>Industrial</i>	0	0	0	0	0
<i>Other-Residential</i>	0	0	0	0	0
<i>Commercial</i>	0	0	0	0	0
<i>Single Family</i>	0	0	0	0	0
<i>Hotels</i>	0	0	0	0	0
<i>Commuting</i>	0	0	0	0	0
<i>Educational</i>	0	0	0	0	0
<b>Total Casualties - 2am</b>	<b>0</b>	<b>0</b>	<b>0</b>	<b>0</b>	<b>0</b>
<b>Casualties - 2pm</b>					
<i>Other-Residential</i>	0	0	0	0	0
<i>Commuting</i>	0	0	0	0	0
<i>Single Family</i>	0	0	0	0	0
<i>Commercial</i>	3	0	0	0	3
<i>Hotels</i>	0	0	0	0	0
<i>Educational</i>	0	0	0	0	0
<i>Industrial</i>	0	0	0	0	0
<b>Total Casualties - 2pm</b>	<b>3</b>	<b>0</b>	<b>0</b>	<b>0</b>	<b>3</b>
<b>Casualties - 5pm</b>					
<i>Industrial</i>	0	0	0	0	0
<i>Educational</i>	0	0	0	0	0
<i>Hotels</i>	0	0	0	0	0
<i>Commercial</i>	1	0	0	0	2
<i>Commuting</i>	0	0	0	0	0
<i>Other-Residential</i>	0	0	0	0	0
<i>Single Family</i>	0	0	0	0	0
<b>Total Casualties - 5pm</b>	<b>2</b>	<b>0</b>	<b>0</b>	<b>0</b>	<b>2</b>
<b>San Francisco</b>					
<b>Casualties - 2am</b>					
<i>Industrial</i>	0	0	0	0	0
<i>Hotels</i>	0	0	0	0	0
<i>Commercial</i>	0	0	0	0	0
<i>Other-Residential</i>	6	0	0	0	6
<i>Commuting</i>	0	0	0	0	0
<i>Educational</i>	0	0	0	0	0
<i>Single Family</i>	0	0	0	0	0
<b>Total Casualties - 2am</b>	<b>7</b>	<b>0</b>	<b>0</b>	<b>0</b>	<b>7</b>
<b>Casualties - 2pm</b>					
<i>Commercial</i>	9	0	0	0	10
<i>Industrial</i>	0	0	0	0	0
<i>Other-Residential</i>	2	0	0	0	2
<i>Single Family</i>	0	0	0	0	0

	Injury Severity Level				Total
	Severity 1	Severity 2	Severity 3	Severity 4	
<b>California</b>					
<b>San Francisco</b>					
<b>Casualties - 2pm</b>					
<i>Hotels</i>	0	0	0	0	0
<i>Commuting</i>	0	0	0	0	0
<i>Educational</i>	1	0	0	0	1
<b>Total Casualties - 2pm</b>	<b>12</b>	<b>0</b>	<b>0</b>	<b>0</b>	<b>13</b>
<b>Casualties - 5pm</b>					
<i>Educational</i>	0	0	0	0	0
<i>Hotels</i>	0	0	0	0	0
<i>Industrial</i>	0	0	0	0	0
<i>Commuting</i>	0	0	0	0	0
<i>Commercial</i>	5	0	0	0	5
<i>Other-Residential</i>	2	0	0	0	2
<i>Single Family</i>	0	0	0	0	0
<b>Total Casualties - 5pm</b>	<b>8</b>	<b>0</b>	<b>0</b>	<b>0</b>	<b>8</b>
<b>San Joaquin</b>					
<b>Casualties - 2am</b>					
<i>Educational</i>	0	0	0	0	0
<i>Commuting</i>	0	0	0	0	0
<i>Hotels</i>	0	0	0	0	0
<i>Commercial</i>	0	0	0	0	0
<i>Single Family</i>	0	0	0	0	0
<i>Industrial</i>	0	0	0	0	0
<i>Other-Residential</i>	0	0	0	0	0
<b>Total Casualties - 2am</b>	<b>0</b>	<b>0</b>	<b>0</b>	<b>0</b>	<b>0</b>
<b>Casualties - 2pm</b>					
<i>Industrial</i>	0	0	0	0	0
<i>Other-Residential</i>	0	0	0	0	0
<i>Educational</i>	0	0	0	0	0
<i>Single Family</i>	0	0	0	0	0
<i>Hotels</i>	0	0	0	0	0
<i>Commuting</i>	0	0	0	0	0
<i>Commercial</i>	0	0	0	0	0
<b>Total Casualties - 2pm</b>	<b>0</b>	<b>0</b>	<b>0</b>	<b>0</b>	<b>0</b>
<b>Casualties - 5pm</b>					
<i>Commuting</i>	0	0	0	0	0
<i>Single Family</i>	0	0	0	0	0
<i>Educational</i>	0	0	0	0	0
<i>Hotels</i>	0	0	0	0	0
<i>Industrial</i>	0	0	0	0	0
<i>Commercial</i>	0	0	0	0	0
<i>Other-Residential</i>	0	0	0	0	0

	Injury Severity Level				Total
	Severity 1	Severity 2	Severity 3	Severity 4	
<b>California</b>					
<b>San Joaquin</b>					
<b>Total Casualties - 5pm</b>	<b>0</b>	<b>0</b>	<b>0</b>	<b>0</b>	<b>0</b>
<b>San Mateo</b>					
<b>Casualties - 2am</b>					
<i>Industrial</i>	0	0	0	0	0
<i>Other-Residential</i>	0	0	0	0	0
<i>Single Family</i>	0	0	0	0	0
<i>Commercial</i>	0	0	0	0	0
<i>Educational</i>	0	0	0	0	0
<i>Commuting</i>	0	0	0	0	0
<i>Hotels</i>	0	0	0	0	0
<b>Total Casualties - 2am</b>	<b>0</b>	<b>0</b>	<b>0</b>	<b>0</b>	<b>0</b>
<b>Casualties - 2pm</b>					
<i>Other-Residential</i>	0	0	0	0	0
<i>Single Family</i>	0	0	0	0	0
<i>Commuting</i>	0	0	0	0	0
<i>Commercial</i>	0	0	0	0	0
<i>Educational</i>	0	0	0	0	0
<i>Hotels</i>	0	0	0	0	0
<i>Industrial</i>	0	0	0	0	0
<b>Total Casualties - 2pm</b>	<b>0</b>	<b>0</b>	<b>0</b>	<b>0</b>	<b>0</b>
<b>Casualties - 5pm</b>					
<i>Commercial</i>	0	0	0	0	0
<i>Industrial</i>	0	0	0	0	0
<i>Other-Residential</i>	0	0	0	0	0
<i>Single Family</i>	0	0	0	0	0
<i>Educational</i>	0	0	0	0	0
<i>Commuting</i>	0	0	0	0	0
<i>Hotels</i>	0	0	0	0	0
<b>Total Casualties - 5pm</b>	<b>0</b>	<b>0</b>	<b>0</b>	<b>0</b>	<b>0</b>
<b>Shasta</b>					
<b>Casualties - 2am</b>					
<i>Other-Residential</i>	7	0	0	0	8
<i>Single Family</i>	3	0	0	0	3
<i>Commuting</i>	0	0	0	0	0
<i>Commercial</i>	0	0	0	0	0
<i>Hotels</i>	0	0	0	0	0
<i>Educational</i>	0	0	0	0	0
<i>Industrial</i>	0	0	0	0	0
<b>Total Casualties - 2am</b>	<b>11</b>	<b>1</b>	<b>0</b>	<b>0</b>	<b>11</b>
<b>Casualties - 2pm</b>					
<i>Commuting</i>	0	0	0	0	0

	Injury Severity Level				Total
	Severity 1	Severity 2	Severity 3	Severity 4	
<b>California</b>					
<b>Shasta</b>					
<b>Casualties - 2pm</b>					
<i>Educational</i>	1	0	0	0	1
<i>Single Family</i>	1	0	0	0	1
<i>Hotels</i>	0	0	0	0	0
<i>Other-Residential</i>	2	0	0	0	3
<i>Industrial</i>	0	0	0	0	0
<i>Commercial</i>	4	0	0	0	5
<b>Total Casualties - 2pm</b>	<b>9</b>	<b>1</b>	<b>0</b>	<b>0</b>	<b>10</b>
<b>Casualties - 5pm</b>					
<i>Hotels</i>	0	0	0	0	0
<i>Commercial</i>	3	0	0	0	3
<i>Commuting</i>	0	0	0	0	0
<i>Single Family</i>	1	0	0	0	1
<i>Educational</i>	0	0	0	0	0
<i>Industrial</i>	0	0	0	0	0
<i>Other-Residential</i>	3	0	0	0	3
<b>Total Casualties - 5pm</b>	<b>7</b>	<b>0</b>	<b>0</b>	<b>0</b>	<b>8</b>
<b>Sierra</b>					
<b>Casualties - 2am</b>					
<i>Other-Residential</i>	0	0	0	0	0
<i>Commercial</i>	0	0	0	0	0
<i>Commuting</i>	0	0	0	0	0
<i>Hotels</i>	0	0	0	0	0
<i>Single Family</i>	0	0	0	0	0
<i>Educational</i>	0	0	0	0	0
<i>Industrial</i>	0	0	0	0	0
<b>Total Casualties - 2am</b>	<b>0</b>	<b>0</b>	<b>0</b>	<b>0</b>	<b>0</b>
<b>Casualties - 2pm</b>					
<i>Hotels</i>	0	0	0	0	0
<i>Educational</i>	0	0	0	0	0
<i>Industrial</i>	0	0	0	0	0
<i>Other-Residential</i>	0	0	0	0	0
<i>Commuting</i>	0	0	0	0	0
<i>Single Family</i>	0	0	0	0	0
<i>Commercial</i>	0	0	0	0	0
<b>Total Casualties - 2pm</b>	<b>0</b>	<b>0</b>	<b>0</b>	<b>0</b>	<b>0</b>
<b>Casualties - 5pm</b>					
<i>Educational</i>	0	0	0	0	0
<i>Hotels</i>	0	0	0	0	0
<i>Commuting</i>	0	0	0	0	0
<i>Industrial</i>	0	0	0	0	0
<i>Other-Residential</i>	0	0	0	0	0

	Injury Severity Level				Total
	Severity 1	Severity 2	Severity 3	Severity 4	
<b>California</b>					
<b>Sierra</b>					
<b>Casualties - 5pm</b>					
Commercial	0	0	0	0	0
Single Family	0	0	0	0	0
<b>Total Casualties - 5pm</b>	<b>0</b>	<b>0</b>	<b>0</b>	<b>0</b>	<b>0</b>
<b>Siskiyou</b>					
<b>Casualties - 2am</b>					
Commuting	0	0	0	0	0
Educational	0	0	0	0	0
Hotels	0	0	0	0	0
Single Family	0	0	0	0	0
Industrial	0	0	0	0	0
Other-Residential	1	0	0	0	2
Commercial	0	0	0	0	0
<b>Total Casualties - 2am</b>	<b>2</b>	<b>0</b>	<b>0</b>	<b>0</b>	<b>2</b>
<b>Casualties - 2pm</b>					
Industrial	0	0	0	0	0
Single Family	0	0	0	0	0
Other-Residential	1	0	0	0	1
Commercial	1	0	0	0	1
Educational	0	0	0	0	0
Commuting	0	0	0	0	0
Hotels	0	0	0	0	0
<b>Total Casualties - 2pm</b>	<b>2</b>	<b>0</b>	<b>0</b>	<b>0</b>	<b>2</b>
<b>Casualties - 5pm</b>					
Hotels	0	0	0	0	0
Industrial	0	0	0	0	0
Commercial	0	0	0	0	0
Other-Residential	1	0	0	0	1
Single Family	0	0	0	0	0
Educational	0	0	0	0	0
Commuting	0	0	0	0	0
<b>Total Casualties - 5pm</b>	<b>1</b>	<b>0</b>	<b>0</b>	<b>0</b>	<b>1</b>
<b>Solano</b>					
<b>Casualties - 2am</b>					
Industrial	0	0	0	0	0
Other-Residential	0	0	0	0	0
Commercial	0	0	0	0	0
Educational	0	0	0	0	0
Commuting	0	0	0	0	0
Single Family	0	0	0	0	0
Hotels	0	0	0	0	0

	Injury Severity Level				Total
	Severity 1	Severity 2	Severity 3	Severity 4	
<b>California</b>					
<b>Solano</b>					
<b>Total Casualties - 2am</b>	<b>0</b>	<b>0</b>	<b>0</b>	<b>0</b>	<b>0</b>
<b>Casualties - 2pm</b>					
Single Family	0	0	0	0	0
Other-Residential	0	0	0	0	0
Commercial	0	0	0	0	0
Educational	0	0	0	0	0
Commuting	0	0	0	0	0
Hotels	0	0	0	0	0
Industrial	0	0	0	0	0
<b>Total Casualties - 2pm</b>	<b>0</b>	<b>0</b>	<b>0</b>	<b>0</b>	<b>0</b>
<b>Casualties - 5pm</b>					
Commercial	0	0	0	0	0
Other-Residential	0	0	0	0	0
Single Family	0	0	0	0	0
Educational	0	0	0	0	0
Commuting	0	0	0	0	0
Hotels	0	0	0	0	0
Industrial	0	0	0	0	0
<b>Total Casualties - 5pm</b>	<b>0</b>	<b>0</b>	<b>0</b>	<b>0</b>	<b>0</b>
<b>Sonoma</b>					
<b>Casualties - 2am</b>					
Single Family	0	0	0	0	0
Other-Residential	0	0	0	0	0
Commercial	0	0	0	0	0
Commuting	0	0	0	0	0
Hotels	0	0	0	0	0
Educational	0	0	0	0	0
Industrial	0	0	0	0	0
<b>Total Casualties - 2am</b>	<b>0</b>	<b>0</b>	<b>0</b>	<b>0</b>	<b>0</b>
<b>Casualties - 2pm</b>					
Single Family	0	0	0	0	0
Commuting	0	0	0	0	0
Educational	0	0	0	0	0
Hotels	0	0	0	0	0
Industrial	0	0	0	0	0
Other-Residential	0	0	0	0	0
Commercial	0	0	0	0	0
<b>Total Casualties - 2pm</b>	<b>1</b>	<b>0</b>	<b>0</b>	<b>0</b>	<b>1</b>
<b>Casualties - 5pm</b>					
Single Family	0	0	0	0	0
Commercial	0	0	0	0	0

	Injury Severity Level				Total
	Severity 1	Severity 2	Severity 3	Severity 4	
<b>California</b>					
<b>Sonoma</b>					
<b>Casualties - 5pm</b>					
<i>Commuting</i>	0	0	0	0	0
<i>Hotels</i>	0	0	0	0	0
<i>Educational</i>	0	0	0	0	0
<i>Industrial</i>	0	0	0	0	0
<i>Other-Residential</i>	0	0	0	0	0
<b>Total Casualties - 5pm</b>	<b>1</b>	<b>0</b>	<b>0</b>	<b>0</b>	<b>1</b>
<b>Stanislaus</b>					
<b>Casualties - 2am</b>					
<i>Hotels</i>	0	0	0	0	0
<i>Industrial</i>	0	0	0	0	0
<i>Commercial</i>	0	0	0	0	0
<i>Single Family</i>	0	0	0	0	0
<i>Other-Residential</i>	0	0	0	0	0
<i>Commuting</i>	0	0	0	0	0
<i>Educational</i>	0	0	0	0	0
<b>Total Casualties - 2am</b>	<b>0</b>	<b>0</b>	<b>0</b>	<b>0</b>	<b>0</b>
<b>Casualties - 2pm</b>					
<i>Industrial</i>	0	0	0	0	0
<i>Other-Residential</i>	0	0	0	0	0
<i>Commercial</i>	0	0	0	0	0
<i>Commuting</i>	0	0	0	0	0
<i>Educational</i>	0	0	0	0	0
<i>Single Family</i>	0	0	0	0	0
<i>Hotels</i>	0	0	0	0	0
<b>Total Casualties - 2pm</b>	<b>0</b>	<b>0</b>	<b>0</b>	<b>0</b>	<b>0</b>
<b>Casualties - 5pm</b>					
<i>Industrial</i>	0	0	0	0	0
<i>Other-Residential</i>	0	0	0	0	0
<i>Commuting</i>	0	0	0	0	0
<i>Single Family</i>	0	0	0	0	0
<i>Commercial</i>	0	0	0	0	0
<i>Hotels</i>	0	0	0	0	0
<i>Educational</i>	0	0	0	0	0
<b>Total Casualties - 5pm</b>	<b>0</b>	<b>0</b>	<b>0</b>	<b>0</b>	<b>0</b>
<b>Sutter</b>					
<b>Casualties - 2am</b>					
<i>Educational</i>	0	0	0	0	0
<i>Commuting</i>	0	0	0	0	0
<i>Hotels</i>	0	0	0	0	0
<i>Industrial</i>	0	0	0	0	0
<i>Other-Residential</i>	0	0	0	0	0

	Injury Severity Level				Total
	Severity 1	Severity 2	Severity 3	Severity 4	
<b>California</b>					
<b>Sutter</b>					
<b>Casualties - 2am</b>					
Single Family	0	0	0	0	0
Commercial	0	0	0	0	0
<b>Total Casualties - 2am</b>	<b>0</b>	<b>0</b>	<b>0</b>	<b>0</b>	<b>0</b>
<b>Casualties - 2pm</b>					
Industrial	0	0	0	0	0
Commuting	0	0	0	0	0
Other-Residential	0	0	0	0	0
Single Family	0	0	0	0	0
Commercial	0	0	0	0	0
Hotels	0	0	0	0	0
Educational	0	0	0	0	0
<b>Total Casualties - 2pm</b>	<b>1</b>	<b>0</b>	<b>0</b>	<b>0</b>	<b>1</b>
<b>Casualties - 5pm</b>					
Commuting	0	0	0	0	0
Commercial	0	0	0	0	0
Educational	0	0	0	0	0
Single Family	0	0	0	0	0
Hotels	0	0	0	0	0
Industrial	0	0	0	0	0
Other-Residential	0	0	0	0	0
<b>Total Casualties - 5pm</b>	<b>1</b>	<b>0</b>	<b>0</b>	<b>0</b>	<b>1</b>
<b>Tehama</b>					
<b>Casualties - 2am</b>					
Hotels	0	0	0	0	0
Industrial	0	0	0	0	0
Commercial	0	0	0	0	0
Other-Residential	2	0	0	0	2
Educational	0	0	0	0	0
Commuting	0	0	0	0	0
Single Family	2	0	0	0	2
<b>Total Casualties - 2am</b>	<b>4</b>	<b>0</b>	<b>0</b>	<b>0</b>	<b>4</b>
<b>Casualties - 2pm</b>					
Other-Residential	1	0	0	0	1
Commercial	2	0	0	0	2
Industrial	0	0	0	0	0
Single Family	0	0	0	0	0
Educational	0	0	0	0	0
Commuting	0	0	0	0	0
Hotels	0	0	0	0	0
<b>Total Casualties - 2pm</b>	<b>3</b>	<b>0</b>	<b>0</b>	<b>0</b>	<b>4</b>

	Injury Severity Level				Total
	Severity 1	Severity 2	Severity 3	Severity 4	
<b>California</b>					
<b>Tehama</b>					
<b>Casualties - 5pm</b>					
<i>Hotels</i>	0	0	0	0	0
<i>Educational</i>	0	0	0	0	0
<i>Industrial</i>	0	0	0	0	0
<i>Single Family</i>	1	0	0	0	1
<i>Commercial</i>	1	0	0	0	1
<i>Commuting</i>	0	0	0	0	0
<i>Other-Residential</i>	1	0	0	0	1
<b>Total Casualties - 5pm</b>	<b>3</b>	<b>0</b>	<b>0</b>	<b>0</b>	<b>3</b>
<b>Trinity</b>					
<b>Casualties - 2am</b>					
<i>Commercial</i>	0	0	0	0	0
<i>Educational</i>	0	0	0	0	0
<i>Other-Residential</i>	2	0	0	0	2
<i>Single Family</i>	1	0	0	0	1
<i>Commuting</i>	0	0	0	0	0
<i>Hotels</i>	0	0	0	0	0
<i>Industrial</i>	0	0	0	0	0
<b>Total Casualties - 2am</b>	<b>3</b>	<b>0</b>	<b>0</b>	<b>0</b>	<b>3</b>
<b>Casualties - 2pm</b>					
<i>Educational</i>	0	0	0	0	0
<i>Commuting</i>	0	0	0	0	0
<i>Hotels</i>	0	0	0	0	0
<i>Single Family</i>	0	0	0	0	0
<i>Commercial</i>	1	0	0	0	1
<i>Industrial</i>	0	0	0	0	0
<i>Other-Residential</i>	1	0	0	0	1
<b>Total Casualties - 2pm</b>	<b>2</b>	<b>0</b>	<b>0</b>	<b>0</b>	<b>2</b>
<b>Casualties - 5pm</b>					
<i>Single Family</i>	0	0	0	0	0
<i>Commercial</i>	0	0	0	0	0
<i>Other-Residential</i>	1	0	0	0	1
<i>Commuting</i>	0	0	0	0	0
<i>Hotels</i>	0	0	0	0	0
<i>Educational</i>	0	0	0	0	0
<i>Industrial</i>	0	0	0	0	0
<b>Total Casualties - 5pm</b>	<b>1</b>	<b>0</b>	<b>0</b>	<b>0</b>	<b>1</b>
<b>Tuolumne</b>					
<b>Casualties - 2am</b>					
<i>Other-Residential</i>	0	0	0	0	0
<i>Industrial</i>	0	0	0	0	0
<i>Commercial</i>	0	0	0	0	0

	Injury Severity Level				Total
	Severity 1	Severity 2	Severity 3	Severity 4	
<b>California</b>					
<b>Tuolumne</b>					
<b>Casualties - 2am</b>					
<i>Commuting</i>	0	0	0	0	0
<i>Single Family</i>	0	0	0	0	0
<i>Educational</i>	0	0	0	0	0
<i>Hotels</i>	0	0	0	0	0
<b>Total Casualties - 2am</b>	<b>0</b>	<b>0</b>	<b>0</b>	<b>0</b>	<b>0</b>
<b>Casualties - 2pm</b>					
<i>Other-Residential</i>	0	0	0	0	0
<i>Commercial</i>	0	0	0	0	0
<i>Single Family</i>	0	0	0	0	0
<i>Educational</i>	0	0	0	0	0
<i>Commuting</i>	0	0	0	0	0
<i>Industrial</i>	0	0	0	0	0
<i>Hotels</i>	0	0	0	0	0
<b>Total Casualties - 2pm</b>	<b>0</b>	<b>0</b>	<b>0</b>	<b>0</b>	<b>0</b>
<b>Casualties - 5pm</b>					
<i>Industrial</i>	0	0	0	0	0
<i>Other-Residential</i>	0	0	0	0	0
<i>Commercial</i>	0	0	0	0	0
<i>Hotels</i>	0	0	0	0	0
<i>Commuting</i>	0	0	0	0	0
<i>Educational</i>	0	0	0	0	0
<i>Single Family</i>	0	0	0	0	0
<b>Total Casualties - 5pm</b>	<b>0</b>	<b>0</b>	<b>0</b>	<b>0</b>	<b>0</b>
<b>Yolo</b>					
<b>Casualties - 2am</b>					
<i>Single Family</i>	0	0	0	0	0
<i>Other-Residential</i>	0	0	0	0	0
<i>Commercial</i>	0	0	0	0	0
<i>Educational</i>	0	0	0	0	0
<i>Commuting</i>	0	0	0	0	0
<i>Hotels</i>	0	0	0	0	0
<i>Industrial</i>	0	0	0	0	0
<b>Total Casualties - 2am</b>	<b>0</b>	<b>0</b>	<b>0</b>	<b>0</b>	<b>0</b>
<b>Casualties - 2pm</b>					
<i>Industrial</i>	0	0	0	0	0
<i>Hotels</i>	0	0	0	0	0
<i>Educational</i>	0	0	0	0	0
<i>Commuting</i>	0	0	0	0	0
<i>Commercial</i>	0	0	0	0	0
<i>Other-Residential</i>	0	0	0	0	0
<i>Single Family</i>	0	0	0	0	0

	Injury Severity Level				Total
	Severity 1	Severity 2	Severity 3	Severity 4	
<b>California</b>					
<b>Yolo</b>					
<b>Total Casualties - 2pm</b>	<b>0</b>	<b>0</b>	<b>0</b>	<b>0</b>	<b>0</b>
<b>Casualties - 5pm</b>					
<i>Other-Residential</i>	0	0	0	0	0
<i>Single Family</i>	0	0	0	0	0
<i>Commuting</i>	0	0	0	0	0
<i>Commercial</i>	0	0	0	0	0
<i>Hotels</i>	0	0	0	0	0
<i>Educational</i>	0	0	0	0	0
<i>Industrial</i>	0	0	0	0	0
<b>Total Casualties - 5pm</b>	<b>0</b>	<b>0</b>	<b>0</b>	<b>0</b>	<b>0</b>
<b>Yuba</b>					
<b>Casualties - 2am</b>					
<i>Industrial</i>	0	0	0	0	0
<i>Other-Residential</i>	0	0	0	0	0
<i>Commercial</i>	0	0	0	0	0
<i>Educational</i>	0	0	0	0	0
<i>Single Family</i>	0	0	0	0	0
<i>Commuting</i>	0	0	0	0	0
<i>Hotels</i>	0	0	0	0	0
<b>Total Casualties - 2am</b>	<b>0</b>	<b>0</b>	<b>0</b>	<b>0</b>	<b>0</b>
<b>Casualties - 2pm</b>					
<i>Commercial</i>	0	0	0	0	0
<i>Commuting</i>	0	0	0	0	0
<i>Single Family</i>	0	0	0	0	0
<i>Other-Residential</i>	0	0	0	0	0
<i>Industrial</i>	0	0	0	0	0
<i>Hotels</i>	0	0	0	0	0
<i>Educational</i>	0	0	0	0	0
<b>Total Casualties - 2pm</b>	<b>0</b>	<b>0</b>	<b>0</b>	<b>0</b>	<b>0</b>
<b>Casualties - 5pm</b>					
<i>Hotels</i>	0	0	0	0	0
<i>Educational</i>	0	0	0	0	0
<i>Industrial</i>	0	0	0	0	0
<i>Other-Residential</i>	0	0	0	0	0
<i>Single Family</i>	0	0	0	0	0
<i>Commercial</i>	0	0	0	0	0
<i>Commuting</i>	0	0	0	0	0
<b>Total Casualties - 5pm</b>	<b>0</b>	<b>0</b>	<b>0</b>	<b>0</b>	<b>0</b>
<b>Region Total</b>	<b>NA</b>	<b>NA</b>	<b>NA</b>	<b>NA</b>	<b>NA</b>

---

---

### Injury Severity Level

---

Severity 1

Severity 2

Severity 3

Severity 4

Total

---

*Totals only reflect data for those census tracts/blocks included in the user's study region and will reflect the entire county/state only if all of the census blocks for that county/states were selected at the time of study region creation.*

---

## Debris Summary Report

April 16, 2024

All values are in thousands of tons.

	Brick, Wood & Others	Concrete & Steel	Total
<b>California</b>			
Butte	4	5	8
Alameda	1	0	2
Humboldt	212	473	685
Del Norte	35	43	78
Solano	0	0	0
San Mateo	0	0	0
Tuolumne	0	0	0
San Joaquin	1	0	1
Nevada	0	0	0
Madera	0	0	0
Colusa	0	1	1
Plumas	0	0	0
Shasta	9	8	18
Siskiyou	2	1	3
Napa	0	0	0
Mendocino	6	4	10
Contra Costa	0	0	0
Tehama	4	2	6
Trinity	3	2	4

	Brick, Wood & Others	Concrete & Steel	Total
El Dorado	0	0	0
Amador	0	0	0
Sierra	0	0	0
Lake	1	0	1
Modoc	0	0	0
Sacramento	1	0	1
Mariposa	0	0	0
Yolo	0	0	1
Calaveras	0	0	0
Yuba	0	0	0
Glenn	3	7	10
Alpine	0	0	0
Stanislaus	0	0	0
Sonoma	1	0	1
San Francisco	10	3	13
Merced	0	0	0
Placer	0	0	0
Mono	0	0	0
Marin	0	0	0
Lassen	0	0	0
Sutter	0	0	1
<b>Total</b>	<b>295</b>	<b>551</b>	<b>846</b>
<b>Region Total</b>	<b>295</b>	<b>551</b>	<b>846</b>

---

---

**Brick, Wood & Others**

**Concrete & Steel**

**Total**

---

*Totals only reflect data for those census tracts/blocks included in the user's study region and will reflect the entire county/state only if all of the census blocks for that county/states were selected at the time of study region creation.*

---

## Direct Economic Losses For Buildings

April 16, 2024

All values are in thousands of dollars

	Capital Stock Losses				Loss Ratio %	Income Losses				Total Loss
	Cost Structural Damage	Cost Non-struct. Damage	Cost Contents Damage	Inventory Loss		Relocation Loss	Capital Related Loss	Wages Losses	Rental Income Loss	
<b>California</b>										
Colusa	769	6,232	3,592	619	0.16	230	278	314	199	12,233
Contra Costa	312	7,272	4,506	477	0.00	50	63	97	85	12,862
Mendocino	9,900	91,885	47,511	4,660	0.45	2,627	2,264	2,231	1,836	162,914
Napa	279	6,174	3,805	433	0.02	51	80	86	69	10,978
Shasta	17,464	149,824	84,630	12,702	0.45	4,851	2,913	3,265	3,170	278,820
Siskiyou	3,024	32,698	18,705	1,811	0.31	944	266	358	574	58,380
Trinity	3,795	26,783	13,924	1,842	0.83	1,431	320	249	705	49,051
Tehama	6,174	53,432	29,511	3,843	0.46	1,729	880	1,202	1,094	97,865
Plumas	24	787	467	20	0.01	4	6	5	10	1,324

	Capital Stock Losses				Loss Ratio %	Income Losses				Total Loss
	Cost Structural Damage	Cost Non-struct. Damage	Cost Contents Damage	Inventory Loss		Relocation Loss	Capital Related Loss	Wages Losses	Rental Income Loss	
Alameda	1,749	12,677	7,391	657	0.00	409	367	552	592	24,394
Butte	6,907	50,344	29,072	3,497	0.13	2,283	1,790	1,863	1,388	97,146
Humboldt	477,806	2,032,572	814,784	68,238	8.95	253,836	107,902	125,658	126,127	4,006,924
Del Norte	61,634	274,982	101,453	3,235	4.89	32,505	7,472	8,488	16,312	506,081
Nevada	13	528	327	27	0.00	1	1	2	3	902
San Joaquin	460	4,369	2,873	379	0.00	100	44	81	86	8,391
Tuolumne	0	28	20	2	0.00	0	0	0	0	49
Solano	238	7,072	4,270	468	0.01	23	36	48	53	12,208
San Mateo	126	2,180	1,277	114	0.00	11	24	29	68	3,829
Madera	0	0	0	0	0.00	0	0	0	0	0
Yolo	652	15,365	10,177	1,291	0.04	112	219	226	156	28,198
Calaveras	1	71	55	16	0.00	0	0	0	0	143
Yuba	228	4,851	2,969	353	0.04	55	120	138	65	8,779
Glenn	10,722	27,872	15,718	4,464	0.59	2,721	1,714	1,780	1,196	66,188
Alpine	0	2	1	0	0.00	0	0	0	0	3
Lassen	11	320	184	12	0.01	2	2	1	4	537
San Francisco	11,257	20,472	9,529	597	0.02	2,672	2,172	2,486	5,423	54,608
Merced	0	9	7	4	0.00	0	0	0	0	20

	Capital Stock Losses				Loss Ratio %	Income Losses				Total Loss
	Cost Structural Damage	Cost Non-struct. Damage	Cost Contents Damage	Inventory Loss		Relocation Loss	Capital Related Loss	Wages Losses	Rental Income Loss	
Stanislaus	92	2,044	1,346	187	0.00	9	10	12	30	3,731
Sutter	971	10,966	6,575	1,328	0.07	128	72	81	101	20,223
Sonoma	1,038	23,778	14,684	1,832	0.02	144	218	250	219	42,163
Mono	0	0	0	0	0.00	0	0	0	0	1
Placer	116	3,283	1,940	192	0.00	8	13	16	17	5,585
Marin	103	3,267	2,048	177	0.01	13	26	26	31	5,691
El Dorado	3	456	294	15	0.00	0	0	0	1	770
Amador	0	51	37	4	0.00	0	0	0	0	93
Sacramento	1,243	15,418	9,086	854	0.01	304	331	563	508	28,307
Lake	1,022	12,054	5,936	486	0.09	245	178	179	248	20,346
Modoc	8	162	106	28	0.01	1	1	1	1	308
Sierra	0	25	17	2	0.00	0	0	0	0	44
Mariposa	0	1	1	0	0.00	0	0	0	0	2
<b>Total</b>	<b>618,146</b>	<b>2,900,303</b>	<b>1,248,829</b>	<b>114,869</b>	<b>0.44</b>	<b>307,500</b>	<b>129,784</b>	<b>150,286</b>	<b>160,373</b>	<b>5,630,090</b>
<b>Region Total</b>	<b>618,146</b>	<b>2,900,303</b>	<b>1,248,829</b>	<b>114,869</b>	<b>0.44</b>	<b>307,500</b>	<b>129,784</b>	<b>150,286</b>	<b>160,373</b>	<b>5,630,090</b>

Totals only reflect data for those census tracts/blocks included in the user's study region and will reflect the entire county/state only if all of the census blocks for that county/states were selected at the time of study region creation.

## Direct Economic Loss For Transportation

April 16, 2024

All values are in thousands of dollars

	Highway	Railway	Light Rail	Bus Facility	Ports	Ferries	Airport	Total
<b>California</b>								
<b>Alameda</b>								
Segments	0	0	0					0
Bridges	95	0	0					95
Tunnels	0	0	0					0
Facilities		410	0	22	1,725	38	3,593	5,789
<b>Total</b>	<b>95</b>	<b>411</b>	<b>0</b>	<b>22</b>	<b>1,725</b>	<b>38</b>	<b>3,593</b>	<b>5,885</b>
<b>Alpine</b>								
Segments	0	0	0					0
Bridges	0	0	0					0
Tunnels	0	0	0					0
Facilities		0	0	0	0	0	51	51
<b>Total</b>	<b>0</b>	<b>0</b>	<b>0</b>	<b>0</b>	<b>0</b>	<b>0</b>	<b>51</b>	<b>51</b>
<b>Amador</b>								
Segments	0	0	0					0
Bridges	0	0	0					0
Tunnels	0	0	0					0
Facilities		0	0	0	0	0	51	51

	Highway	Railway	Light Rail	Bus Facility	Ports	Ferries	Airport	Total
<b>Total</b>	<b>0</b>	<b>0</b>	<b>0</b>	<b>0</b>	<b>0</b>	<b>0</b>	<b>51</b>	<b>51</b>
<b>Butte</b>								
Segments	0	0	0					0
Bridges	294	12	0					306
Tunnels	0	0	0					0
Facilities		109	0	0	0	0	1,443	1,552
<b>Total</b>	<b>294</b>	<b>121</b>	<b>0</b>	<b>0</b>	<b>0</b>	<b>0</b>	<b>1,443</b>	<b>1,858</b>
<b>Calaveras</b>								
Segments	0	0	0					0
Bridges	0	0	0					0
Tunnels	0	0	0					0
Facilities		0	0	0	0	0	102	102
<b>Total</b>	<b>0</b>	<b>0</b>	<b>0</b>	<b>0</b>	<b>0</b>	<b>0</b>	<b>102</b>	<b>102</b>
<b>Colusa</b>								
Segments	0	0	0					0
Bridges	301	32	0					333
Tunnels	0	0	0					0
Facilities		0	0	0	0	0	217	217
<b>Total</b>	<b>301</b>	<b>32</b>	<b>0</b>	<b>0</b>	<b>0</b>	<b>0</b>	<b>217</b>	<b>550</b>
<b>Contra Costa</b>								
Segments	0	0	0					0
Bridges	569	10	0					579
Tunnels	0	0	0					0
Facilities		340	165	0	4,621	93	231	5,450

	Highway	Railway	Light Rail	Bus Facility	Ports	Ferries	Airport	Total
<b>Total</b>	<b>569</b>	<b>350</b>	<b>165</b>	<b>0</b>	<b>4,621</b>	<b>93</b>	<b>231</b>	<b>6,029</b>
<b>Del Norte</b>								
Segments	0	0	0					0
Bridges	4,683	0	0					4,683
Tunnels	293	0	0					293
Facilities		0	0	693	1,165	0	4,650	6,507
<b>Total</b>	<b>4,976</b>	<b>0</b>	<b>0</b>	<b>693</b>	<b>1,165</b>	<b>0</b>	<b>4,650</b>	<b>11,483</b>
<b>El Dorado</b>								
Segments	0	0	0					0
Bridges	0	0	0					0
Tunnels	0	0	0					0
Facilities		0	0	64	0	0	282	346
<b>Total</b>	<b>0</b>	<b>0</b>	<b>0</b>	<b>64</b>	<b>0</b>	<b>0</b>	<b>282</b>	<b>346</b>
<b>Glenn</b>								
Segments	0	0	0					0
Bridges	584	36	0					620
Tunnels	0	0	0					0
Facilities		0	0	0	288	0	800	1,088
<b>Total</b>	<b>584</b>	<b>36</b>	<b>0</b>	<b>0</b>	<b>288</b>	<b>0</b>	<b>800</b>	<b>1,708</b>
<b>Humboldt</b>								
Segments	0	0	0					0
Bridges	59,847	479	0					60,326
Tunnels	0	0	0					0
Facilities		0	0	1,888	34,652	0	17,172	53,711

	Highway	Railway	Light Rail	Bus Facility	Ports	Ferries	Airport	Total
<b>Total</b>	<b>59,847</b>	<b>479</b>	<b>0</b>	<b>1,888</b>	<b>34,652</b>	<b>0</b>	<b>17,172</b>	<b>114,038</b>
<b>Lake</b>								
<i>Segments</i>	0	0	0					0
<i>Bridges</i>	49	0	0					49
<i>Tunnels</i>	0	0	0					0
<i>Facilities</i>		0	0	0	0	0	800	800
<b>Total</b>	<b>49</b>	<b>0</b>	<b>0</b>	<b>0</b>	<b>0</b>	<b>0</b>	<b>800</b>	<b>849</b>
<b>Lassen</b>								
<i>Segments</i>	0	0	0					0
<i>Bridges</i>	1	0	0					1
<i>Tunnels</i>	0	0	0					0
<i>Facilities</i>		0	0	0	0	0	473	473
<b>Total</b>	<b>1</b>	<b>0</b>	<b>0</b>	<b>0</b>	<b>0</b>	<b>0</b>	<b>473</b>	<b>473</b>
<b>Madera</b>								
<i>Segments</i>	0	0	0					0
<i>Bridges</i>	0	0	0					0
<i>Tunnels</i>	0	0	0					0
<i>Facilities</i>		0	0	0	0	0	0	0
<b>Total</b>	<b>0</b>	<b>0</b>	<b>0</b>	<b>0</b>	<b>0</b>	<b>0</b>	<b>0</b>	<b>0</b>
<b>Marin</b>								
<i>Segments</i>	0	0	0					0
<i>Bridges</i>	983	2	0					986
<i>Tunnels</i>	0	0	0					0
<i>Facilities</i>		0	0	92	1,001	64	217	1,374

	Highway	Railway	Light Rail	Bus Facility	Ports	Ferries	Airport	Total
<b>Total</b>	<b>983</b>	<b>2</b>	<b>0</b>	<b>92</b>	<b>1,001</b>	<b>64</b>	<b>217</b>	<b>2,360</b>
<b>Mariposa</b>								
Segments	0	0	0					0
Bridges	0	0	0					0
Tunnels	0	0	0					0
Facilities		0	0	10	0	0	6	15
<b>Total</b>	<b>0</b>	<b>0</b>	<b>0</b>	<b>10</b>	<b>0</b>	<b>0</b>	<b>6</b>	<b>15</b>
<b>Mendocino</b>								
Segments	0	0	0					0
Bridges	1,759	88	0					1,846
Tunnels	0	0	0					0
Facilities		0	0	531	422	0	2,570	3,523
<b>Total</b>	<b>1,759</b>	<b>88</b>	<b>0</b>	<b>531</b>	<b>422</b>	<b>0</b>	<b>2,570</b>	<b>5,369</b>
<b>Merced</b>								
Segments	0	0	0					0
Bridges	0	0	0					0
Tunnels	0	0	0					0
Facilities		0	0	0	0	0	0	0
<b>Total</b>	<b>0</b>	<b>0</b>	<b>0</b>	<b>0</b>	<b>0</b>	<b>0</b>	<b>0</b>	<b>0</b>
<b>Modoc</b>								
Segments	0	0	0					0
Bridges	0	2	0					2
Tunnels	0	0	0					0
Facilities		0	0	0	0	0	473	473

	Highway	Railway	Light Rail	Bus Facility	Ports	Ferries	Airport	Total
<b>Total</b>	<b>0</b>	<b>2</b>	<b>0</b>	<b>0</b>	<b>0</b>	<b>0</b>	<b>473</b>	<b>475</b>
<b>Mono</b>								
Segments	0	0	0					0
Bridges	0	0	0					0
Tunnels	0	0	0					0
Facilities		0	0	5	0	0	164	169
<b>Total</b>	<b>0</b>	<b>0</b>	<b>0</b>	<b>5</b>	<b>0</b>	<b>0</b>	<b>164</b>	<b>169</b>
<b>Napa</b>								
Segments	0	0	0					0
Bridges	24	3	0					27
Tunnels	0	0	0					0
Facilities		0	0	93	469	0	346	908
<b>Total</b>	<b>24</b>	<b>3</b>	<b>0</b>	<b>93</b>	<b>469</b>	<b>0</b>	<b>346</b>	<b>935</b>
<b>Nevada</b>								
Segments	0	0	0					0
Bridges	1	0	0					1
Tunnels	0	0	0					0
Facilities		26	0	0	0	0	102	128
<b>Total</b>	<b>1</b>	<b>26</b>	<b>0</b>	<b>0</b>	<b>0</b>	<b>0</b>	<b>102</b>	<b>129</b>
<b>Placer</b>								
Segments	0	0	0					0
Bridges	12	0	0					12
Tunnels	0	0	0					0
Facilities		103	0	21	0	0	204	328

	Highway	Railway	Light Rail	Bus Facility	Ports	Ferries	Airport	Total
<b>Total</b>	<b>12</b>	<b>103</b>	<b>0</b>	<b>21</b>	<b>0</b>	<b>0</b>	<b>204</b>	<b>340</b>
<b>Plumas</b>								
Segments	0	0	0					0
Bridges	23	0	0					23
Tunnels	1	0	0					1
Facilities		0	0	0	0	0	856	856
<b>Total</b>	<b>24</b>	<b>0</b>	<b>0</b>	<b>0</b>	<b>0</b>	<b>0</b>	<b>856</b>	<b>880</b>
<b>Sacramento</b>								
Segments	0	0	0					0
Bridges	432	0	0					432
Tunnels	0	0	0					0
Facilities		26	3,024	43	863	55	17,128	21,139
<b>Total</b>	<b>432</b>	<b>26</b>	<b>3,024</b>	<b>43</b>	<b>863</b>	<b>55</b>	<b>17,128</b>	<b>21,570</b>
<b>San Francisco</b>								
Segments	0	0	0					0
Bridges	644	0	0					644
Tunnels	0	0	0					0
Facilities		0	31,375	49	2,019	51	308	33,802
<b>Total</b>	<b>644</b>	<b>0</b>	<b>31,375</b>	<b>49</b>	<b>2,019</b>	<b>51</b>	<b>308</b>	<b>34,446</b>
<b>San Joaquin</b>								
Segments	0	0	0					0
Bridges	220	0	0					220
Tunnels	0	0	0					0
Facilities		410	0	21	2,177	51	418	3,078

	Highway	Railway	Light Rail	Bus Facility	Ports	Ferries	Airport	Total
<b>Total</b>	<b>220</b>	<b>411</b>	<b>0</b>	<b>21</b>	<b>2,177</b>	<b>51</b>	<b>418</b>	<b>3,298</b>
<b>San Mateo</b>								
<i>Segments</i>	0	0	0					0
<i>Bridges</i>	40	0	0					40
<i>Tunnels</i>	0	0	0					0
<i>Facilities</i>		0	0	0	661	0	8,789	9,450
<b>Total</b>	<b>40</b>	<b>0</b>	<b>0</b>	<b>0</b>	<b>661</b>	<b>0</b>	<b>8,789</b>	<b>9,490</b>
<b>Shasta</b>								
<i>Segments</i>	0	0	0					0
<i>Bridges</i>	617	26	0					644
<i>Tunnels</i>	0	0	0					0
<i>Facilities</i>		295	0	253	0	0	2,264	2,812
<b>Total</b>	<b>617</b>	<b>321</b>	<b>0</b>	<b>253</b>	<b>0</b>	<b>0</b>	<b>2,264</b>	<b>3,455</b>
<b>Sierra</b>								
<i>Segments</i>	0	0	0					0
<i>Bridges</i>	0	0	0					0
<i>Tunnels</i>	0	0	0					0
<i>Facilities</i>		0	0	0	0	0	51	51
<b>Total</b>	<b>0</b>	<b>0</b>	<b>0</b>	<b>0</b>	<b>0</b>	<b>0</b>	<b>51</b>	<b>51</b>
<b>Siskiyou</b>								
<i>Segments</i>	0	0	0					0
<i>Bridges</i>	1,338	15	0					1,354
<i>Tunnels</i>	0	0	0					0
<i>Facilities</i>		109	0	172	0	0	3,392	3,674

	Highway	Railway	Light Rail	Bus Facility	Ports	Ferries	Airport	Total
<b>Total</b>	<b>1,338</b>	<b>124</b>	<b>0</b>	<b>172</b>	<b>0</b>	<b>0</b>	<b>3,392</b>	<b>5,027</b>
<b>Solano</b>								
Segments	0	0	0					0
Bridges	277	13	0					290
Tunnels	0	0	0					0
Facilities		244	0	65	2,923	93	650	3,975
<b>Total</b>	<b>277</b>	<b>257</b>	<b>0</b>	<b>65</b>	<b>2,923</b>	<b>93</b>	<b>650</b>	<b>4,266</b>
<b>Sonoma</b>								
Segments	0	0	0					0
Bridges	110	6	0					115
Tunnels	0	0	0					0
Facilities		0	0	97	1,095	0	1,762	2,953
<b>Total</b>	<b>110</b>	<b>6</b>	<b>0</b>	<b>97</b>	<b>1,095</b>	<b>0</b>	<b>1,762</b>	<b>3,068</b>
<b>Stanislaus</b>								
Segments	0	0	0					0
Bridges	32	0	0					32
Tunnels	0	0	0					0
Facilities		154	0	43	0	0	180	376
<b>Total</b>	<b>32</b>	<b>154</b>	<b>0</b>	<b>43</b>	<b>0</b>	<b>0</b>	<b>180</b>	<b>409</b>
<b>Sutter</b>								
Segments	0	0	0					0
Bridges	191	2	0					193
Tunnels	0	0	0					0
Facilities		0	0	0	0	0	548	548

	Highway	Railway	Light Rail	Bus Facility	Ports	Ferries	Airport	Total
<b>Total</b>	<b>191</b>	<b>2</b>	<b>0</b>	<b>0</b>	<b>0</b>	<b>0</b>	<b>548</b>	<b>741</b>
<b>Tehama</b>								
Segments	0	0	0					0
Bridges	1,843	109	0					1,952
Tunnels	0	0	0					0
Facilities		0	0	0	0	0	986	986
<b>Total</b>	<b>1,843</b>	<b>109</b>	<b>0</b>	<b>0</b>	<b>0</b>	<b>0</b>	<b>986</b>	<b>2,938</b>
<b>Trinity</b>								
Segments	0	0	0					0
Bridges	1,123	0	0					1,123
Tunnels	0	0	0					0
Facilities		0	0	0	0	0	4,782	4,782
<b>Total</b>	<b>1,123</b>	<b>0</b>	<b>0</b>	<b>0</b>	<b>0</b>	<b>0</b>	<b>4,782</b>	<b>5,905</b>
<b>Tuolumne</b>								
Segments	0	0	0					0
Bridges	0	0	0					0
Tunnels	0	0	0					0
Facilities		0	0	0	0	0	108	108
<b>Total</b>	<b>0</b>	<b>0</b>	<b>0</b>	<b>0</b>	<b>0</b>	<b>0</b>	<b>108</b>	<b>108</b>
<b>Yolo</b>								
Segments	0	0	0					0
Bridges	601	2	0					603
Tunnels	0	0	0					0
Facilities		379	0	0	624	0	486	1,489

	Highway	Railway	Light Rail	Bus Facility	Ports	Ferries	Airport	Total
<b>Total</b>	<b>601</b>	<b>381</b>	<b>0</b>	<b>0</b>	<b>624</b>	<b>0</b>	<b>486</b>	<b>2,091</b>
<b>Yuba</b>								
<i>Segments</i>	0	0	0					0
<i>Bridges</i>	17	2	0					20
<i>Tunnels</i>	0	0	0					0
<i>Facilities</i>		0	0	92	0	0	435	527
<b>Total</b>	<b>17</b>	<b>2</b>	<b>0</b>	<b>92</b>	<b>0</b>	<b>0</b>	<b>435</b>	<b>546</b>
<b>Total</b>	<b>77,005</b>	<b>3,444</b>	<b>34,564</b>	<b>4,253</b>	<b>54,704</b>	<b>446</b>	<b>77,089</b>	<b>251,505</b>
<b>Region Total</b>	<b>77,005</b>	<b>3,444</b>	<b>34,564</b>	<b>4,253</b>	<b>54,704</b>	<b>446</b>	<b>77,089</b>	<b>251,505</b>

Totals only reflect data for those census tracts/blocks included in the user's study region and will reflect the entire county/state only if all of the census blocks for that county/states were selected at the time of study region creation.

## Direct Economic Loss For Utilities

April 16, 2024

All values are in thousands of dollars

	Potable Water	Waste Water	Oil Systems	Natural Gas	Electric Power	Communication	Total
<b>California</b>							
<b>Alameda</b>							
<i>Facilities</i>	84	1,844	0	0	14,913	3	16,845
<i>Pipelines</i>	411	206	0	0			617
<b>Total</b>	495	2,051	0	0	14,913	3	17,462
<b>Alpine</b>							
<i>Facilities</i>	0	123	0	0	0	0	123
<i>Pipelines</i>	7	3	0	0			10
<b>Total</b>	7	126	0	0	0	0	133
<b>Amador</b>							
<i>Facilities</i>	0	123	0	0	8,504	0	8,627
<i>Pipelines</i>	31	16	0	0			46
<b>Total</b>	31	138	0	0	8,504	0	8,673
<b>Butte</b>							
<i>Facilities</i>	348	8,988	1	0	341,770	38	351,146

	Potable Water	Waste Water	Oil Systems	Natural Gas	Electric Power	Communication	Total
<i>Pipelines</i>	396	199	0	0			595
<b>Total</b>	<b>745</b>	<b>9,187</b>	<b>1</b>	<b>0</b>	<b>341,770</b>	<b>38</b>	<b>351,741</b>
<b>Calaveras</b>							
<i>Facilities</i>	28	492	0	0	25,137	1	25,658
<i>Pipelines</i>	55	28	0	0			83
<b>Total</b>	<b>83</b>	<b>519</b>	<b>0</b>	<b>0</b>	<b>25,137</b>	<b>1</b>	<b>25,741</b>
<b>Colusa</b>							
<i>Facilities</i>	0	7,464	0	1,590	105,903	2	114,959
<i>Pipelines</i>	166	83	0	0			249
<b>Total</b>	<b>166</b>	<b>7,547</b>	<b>0</b>	<b>1,590</b>	<b>105,903</b>	<b>2</b>	<b>115,208</b>
<b>Contra Costa</b>							
<i>Facilities</i>	169	3,123	3	0	52,392	2	55,688
<i>Pipelines</i>	522	262	0	0			784
<b>Total</b>	<b>690</b>	<b>3,385</b>	<b>3</b>	<b>0</b>	<b>52,392</b>	<b>2</b>	<b>56,472</b>
<b>Del Norte</b>							
<i>Facilities</i>	0	35,788	0	0	0	260	36,049
<i>Pipelines</i>	1,751	880	0	0			2,631
<b>Total</b>	<b>1,751</b>	<b>36,668</b>	<b>0</b>	<b>0</b>	<b>0</b>	<b>260</b>	<b>38,679</b>
<b>El Dorado</b>							
<i>Facilities</i>	28	492	0	0	31,299	1	31,820
<i>Pipelines</i>	94	47	0	0			142

	Potable Water	Waste Water	Oil Systems	Natural Gas	Electric Power	Communication	Total
<b>Total</b>	122	539	0	0	31,299	1	31,962
<b>Glenn</b>							
<i>Facilities</i>	0	4,415	0	0	5,099	7	9,521
<i>Pipelines</i>	449	225	0	0			674
<b>Total</b>	449	4,640	0	0	5,099	7	10,195
<b>Humboldt</b>							
<i>Facilities</i>	0	540,648	0	0	396,537	1,427	938,612
<i>Pipelines</i>	10,138	5,092	0	0			15,230
<b>Total</b>	10,138	545,741	0	0	396,537	1,427	953,843
<b>Lake</b>							
<i>Facilities</i>	697	0	0	0	42,369	24	43,090
<i>Pipelines</i>	353	177	0	0			530
<b>Total</b>	1,049	177	0	0	42,369	24	43,620
<b>Lassen</b>							
<i>Facilities</i>	0	123	0	0	13,745	3	13,871
<i>Pipelines</i>	450	226	0	0			676
<b>Total</b>	450	349	0	0	13,745	3	14,547
<b>Madera</b>							
<i>Facilities</i>	0	0	0	0	0	0	0
<i>Pipelines</i>	20	10	0	0			31
<b>Total</b>	20	10	0	0	0	0	31

	Potable Water	Waste Water	Oil Systems	Natural Gas	Electric Power	Communication	Total
<b>Marin</b>							
<i>Facilities</i>	348	3,786	0	0	770	4	4,908
<i>Pipelines</i>	131	66	0	0			197
<b>Total</b>	480	3,852	0	0	770	4	5,106
<b>Mariposa</b>							
<i>Facilities</i>	0	8	0	0	283	0	291
<i>Pipelines</i>	45	22	0	0			67
<b>Total</b>	45	30	0	0	283	0	357
<b>Mendocino</b>							
<i>Facilities</i>	0	44,517	0	0	13,155	186	57,857
<i>Pipelines</i>	1,604	806	0	0			2,409
<b>Total</b>	1,604	45,322	0	0	13,155	186	60,267
<b>Merced</b>							
<i>Facilities</i>	0	0	0	0	92	0	92
<i>Pipelines</i>	7	3	0	0			10
<b>Total</b>	7	3	0	0	92	0	102
<b>Modoc</b>							
<i>Facilities</i>	0	123	0	75	0	0	198
<i>Pipelines</i>	346	174	0	0			519
<b>Total</b>	346	297	0	75	0	0	717
<b>Mono</b>							

	Potable Water	Waste Water	Oil Systems	Natural Gas	Electric Power	Communication	Total
<i>Facilities</i>	0	0	0	0	54	0	54
<i>Pipelines</i>	56	28	0	0			84
<b>Total</b>	56	28	0	0	54	0	138
<b>Napa</b>							
<i>Facilities</i>	0	3,295	0	0	312	7	3,614
<i>Pipelines</i>	108	54	0	0			163
<b>Total</b>	108	3,349	0	0	312	7	3,777
<b>Nevada</b>							
<i>Facilities</i>	0	861	0	0	2,927	1	3,788
<i>Pipelines</i>	215	108	0	0			323
<b>Total</b>	215	969	0	0	2,927	1	4,111
<b>Placer</b>							
<i>Facilities</i>	0	1,229	0	0	15,806	1	17,036
<i>Pipelines</i>	229	115	0	0			343
<b>Total</b>	229	1,344	0	0	15,806	1	17,380
<b>Plumas</b>							
<i>Facilities</i>	28	1,893	0	0	81,925	1	83,847
<i>Pipelines</i>	426	214	0	0			639
<b>Total</b>	454	2,107	0	0	81,925	1	84,486
<b>Sacramento</b>							
<i>Facilities</i>	0	1,229	0	0	20,638	19	21,886

	Potable Water	Waste Water	Oil Systems	Natural Gas	Electric Power	Communication	Total
<i>Pipelines</i>	540	271	0	0			811
<b>Total</b>	540	1,501	0	0	20,638	19	22,697
<b>San Francisco</b>							
<i>Facilities</i>	0	861	0	0	108	4	972
<i>Pipelines</i>	96	48	0	0			145
<b>Total</b>	96	909	0	0	108	4	1,117
<b>San Joaquin</b>							
<i>Facilities</i>	140	861	0	0	9,393	2	10,396
<i>Pipelines</i>	384	193	0	0			576
<b>Total</b>	524	1,053	0	0	9,393	2	10,973
<b>San Mateo</b>							
<i>Facilities</i>	0	1,475	0	0	159	3	1,637
<i>Pipelines</i>	93	47	0	0			140
<b>Total</b>	93	1,522	0	0	159	3	1,777
<b>Shasta</b>							
<i>Facilities</i>	2,907	47,987	0	658	1,303,905	198	1,355,654
<i>Pipelines</i>	720	362	0	0			1,082
<b>Total</b>	3,627	48,348	0	658	1,303,905	198	1,356,736
<b>Sierra</b>							
<i>Facilities</i>	0	0	0	0	647	0	647
<i>Pipelines</i>	94	47	0	0			142

	Potable Water	Waste Water	Oil Systems	Natural Gas	Electric Power	Communication	Total
<b>Total</b>	94	47	0	0	647	0	789
<b>Siskiyou</b>							
<i>Facilities</i>	0	5,939	0	0	54,535	48	60,522
<i>Pipelines</i>	1,628	818	0	0			2,446
<b>Total</b>	1,628	6,757	0	0	54,535	48	62,969
<b>Solano</b>							
<i>Facilities</i>	0	2,262	0	0	28,160	5	30,428
<i>Pipelines</i>	367	185	0	0			552
<b>Total</b>	367	2,447	0	0	28,160	5	30,980
<b>Sonoma</b>							
<i>Facilities</i>	0	16,768	0	0	288,208	32	305,008
<i>Pipelines</i>	544	273	0	0			818
<b>Total</b>	544	17,041	0	0	288,208	32	305,825
<b>Stanislaus</b>							
<i>Facilities</i>	0	123	0	0	5,629	3	5,754
<i>Pipelines</i>	206	103	0	0			309
<b>Total</b>	206	226	0	0	5,629	3	6,064
<b>Sutter</b>							
<i>Facilities</i>	0	3,049	0	0	56,980	17	60,046
<i>Pipelines</i>	142	72	0	0			214
<b>Total</b>	142	3,120	0	0	56,980	17	60,259

	Potable Water	Waste Water	Oil Systems	Natural Gas	Electric Power	Communication	Total
<b>Tehama</b>							
<i>Facilities</i>	0	14,244	0	1,590	35,910	39	51,782
<i>Pipelines</i>	720	362	0	0			1,082
<b>Total</b>	720	14,606	0	1,590	35,910	39	52,865
<b>Trinity</b>							
<i>Facilities</i>	0	0	0	0	202,712	0	202,712
<i>Pipelines</i>	1,310	658	0	0			1,967
<b>Total</b>	1,310	658	0	0	202,712	0	204,680
<b>Tuolumne</b>							
<i>Facilities</i>	0	123	0	0	7,650	1	7,774
<i>Pipelines</i>	68	34	0	0			102
<b>Total</b>	68	157	0	0	7,650	1	7,876
<b>Yolo</b>							
<i>Facilities</i>	0	4,696	0	0	6,937	12	11,646
<i>Pipelines</i>	178	89	0	0			268
<b>Total</b>	178	4,785	0	0	6,937	12	11,913
<b>Yuba</b>							
<i>Facilities</i>	0	4,696	0	0	16,157	2	20,856
<i>Pipelines</i>	181	91	0	0			272
<b>Total</b>	181	4,787	0	0	16,157	2	21,128
<b>Total</b>	<b>30,058</b>	<b>776,345</b>	<b>4</b>	<b>3,913</b>	<b>3,190,721</b>	<b>2,352</b>	<b>4,003,394</b>

---

---

	Potable Water	Waste Water	Oil Systems	Natural Gas	Electric Power	Communication	Total
<b>Region Total</b>	30,058	776,345	4	3,913	3,190,721	2,352	4,003,394

---

---

*Totals only reflect data for those census tracts/blocks included in the user's study region and will reflect the entire county/state only if all of the census blocks for that county/states were selected at the time of study region creation.*

## Hazus Quick Assessment Report

### Estimated Economic Loss (\$ Billions)

Category	Description	Range
General Building Stock	Building Damage	1.80 - 7.00
	Building Contents	0.20 - 1.00
	Business Interruption	0.40 - 1.50
Infrastructure	Lifelines Damage	
<b>Total</b>		2.80 - 11.30

### Preliminary Damage Assessment (PDA) Estimates

Description	Residential	Commercial	Other	Total
Affected	46,700	3,200	1,400	51,300
Minor	17,800	1,600	670	20,070
Major	2,600	460	240	3,300
Destroyed	320	170	80	570
<b>Total</b>	67,420	5,430	2,390	75,240

### Estimated Casualties : Night Time

Severity Level	Description	# Persons
Level 1	Medical Aid	150 - 600
Level 2	Hospital Care	20 - 90
Level 3	Life-threatening	< 10
Level 4	Fatalities	< 10

### Estimated Shelter Needs

Type	Households	People
Displaced Households	700 - 3,000	1,750 - 7,500
Public Shelter	350	870

Comments :

\*Hazus damage estimates are presented using FEMA Preliminary Damage Assessment (PDA) categories. These estimates should be used for planning purposes and may not reflect actual observed damages from the PDA process.

#### Disclaimer:

The estimates of social and economic impacts contained in this report were produced using HAZUS loss estimation methodology software which is based on current scientific and engineering knowledge. There are uncertainties inherent in any loss estimation technique. Therefore, there may be significant differences between the modeled results contained in this report and the actual social and economic losses following a specific earthquake. These results can be improved by using enhanced inventory, geotechnical, and observed ground motion data.

### Earthquake Information

Location :

Origin Time:

Magnitude : 9.00

Epicenter Latitude/Longitude :

/

Depth & Type : /U

Name :

NA

Ground Motion /Attenuation :

Maximum PGA: 0.00

Information Sources:

Comments :

### Population and Building Exposure

Population: 11,411,682

### Building Exposure : (\$ Millions)

Residential	1,474,511
Commercial	391,512
Other	348,768
<b>Total</b>	<b>2,214,791</b>

Counties : See Appendix

Major Metro Area :

## Hazus Quick Assessment Report

### Estimated Economic Loss (\$ Billions)

Category	Description	Range
General Building Stock	Building Damage	1.80 - 7.00
	Building Contents	0.20 - 1.00
	Business Interruption	0.40 - 1.50
Infrastructure	Lifelines Damage	
<b>Total</b>		2.80 - 11.30

### Preliminary Damage Assessment (PDA) Estimates

Description	Residential	Commercial	Other	Total
Affected	46,700	3,200	1,400	51,300
Minor	17,800	1,600	670	20,070
Major	2,600	460	240	3,300
Destroyed	320	170	80	570
<b>Total</b>	67,420	5,430	2,390	75,240

### Estimated Casualties : Day Time

Severity Level	Description	# Persons
Level 1	Medical Aid	300 - 1,000
Level 2	Hospital Care	50 - 200
Level 3	Life-threatening	10 - 30
Level 4	Fatalities	10 - 50

### Estimated Shelter Needs

Type	Households	People
Displaced Households	700 - 3,000	1,750 - 7,500
Public Shelter	350	870

### Earthquake Information

Location :

Origin Time:

Magnitude : 9.00

Epicenter Latitude/Longitude :  
/

Depth & Type : /U

Name :  
NA

Ground Motion /Attenuation :

Maximum PGA: 0.00

Information Sources:

Comments :

### Population and Building Exposure

Population: 11,411,682

### Building Exposure : (\$ Millions)

Residential	1,474,511
Commercial	391,512
Other	348,768
<b>Total</b>	2,214,791

Counties : See Appendix

Major Metro Area :

Comments :

\*Hazus damage estimates are presented using FEMA Preliminary Damage Assessment (PDA) categories. These estimates should be used for planning purposes and may not reflect actual observed damages from the PDA process.

#### Disclaimer:

The estimates of social and economic impacts contained in this report were produced using HAZUS loss estimation methodology software which is based on current scientific and engineering knowledge. There are uncertainties inherent in any loss estimation technique. Therefore, there may be significant differences between the modeled results contained in this report and the actual social and economic losses following a specific earthquake. These results can be improved by using enhanced inventory, geotechnical, and observed ground motion data.

## Hazus Quick Assessment Report

### Estimated Economic Loss (\$ Billions)

Category	Description	Range
General Building Stock	Building Damage	1.80 - 7.00
	Building Contents	0.20 - 1.00
	Business Interruption	0.40 - 1.50
Infrastructure	Lifelines Damage	
<b>Total</b>		2.80 - 11.30

### Preliminary Damage Assessment (PDA) Estimates

Description	Residential	Commercial	Other	Total
Affected	46,700	3,200	1,400	51,300
Minor	17,800	1,600	670	20,070
Major	2,600	460	240	3,300
Destroyed	320	170	80	570
<b>Total</b>	67,420	5,430	2,390	75,240

### Estimated Casualties : Commute Time

Severity Level	Description	# Persons
Level 1	Medical Aid	170 - 700
Level 2	Hospital Care	40 - 140
Level 3	Life-threatening	10 - 40
Level 4	Fatalities	10 - 30

### Estimated Shelter Needs

Type	Households	People
Displaced Households	700 - 3,000	1,750 - 7,500
Public Shelter	350	870

### Earthquake Information

Location :

Origin Time:

Magnitude : 9.00

Epicenter Latitude/Longitude :  
/

Depth & Type : /U

Name :  
NA

Ground Motion /Attenuation :

Maximum PGA: 0.00

Information Sources:

Comments :

### Population and Building Exposure

Population: 11,411,682

### Building Exposure : (\$ Millions)

Residential	1,474,511
Commercial	391,512
Other	348,768
<b>Total</b>	2,214,791

Counties : See Appendix

Major Metro Area :

Comments :

\*Hazus damage estimates are presented using FEMA Preliminary Damage Assessment (PDA) categories. These estimates should be used for planning purposes and may not reflect actual observed damages from the PDA process.

#### Disclaimer:

The estimates of social and economic impacts contained in this report were produced using HAZUS loss estimation methodology software which is based on current scientific and engineering knowledge. There are uncertainties inherent in any loss estimation technique. Therefore, there may be significant differences between the modeled results contained in this report and the actual social and economic losses following a specific earthquake. These results can be improved by using enhanced inventory, geotechnical, and observed ground motion data.

## Shelter Summary Report

April 16, 2024

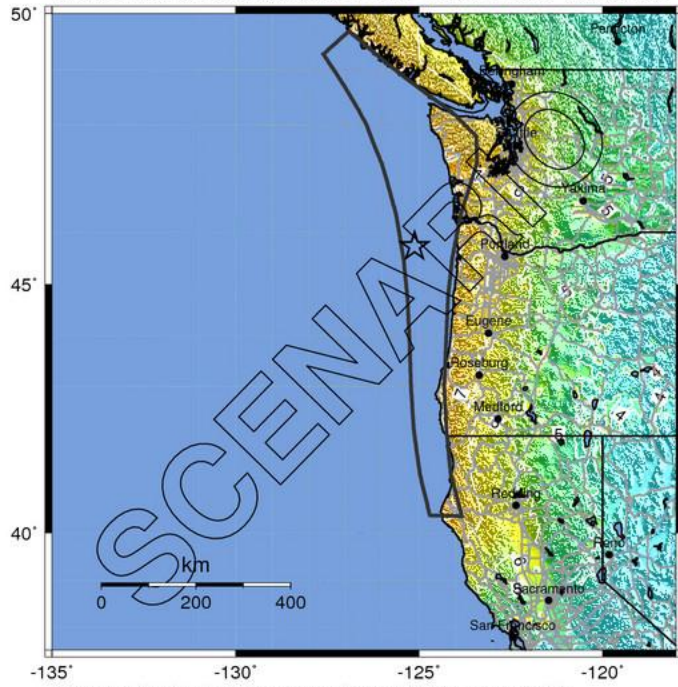
	# of Displaced Households	# of People Needing Short Term Shelter
<b>California</b>		
Butte	2	1
Alameda	1	0
Humboldt	1,372	808
Del Norte	72	48
Solano	0	0
San Mateo	0	0
Tuolumne	0	0
San Joaquin	0	0
Nevada	0	0
Madera	0	0
Colusa	0	0
Plumas	0	0
Shasta	8	5
Siskiyou	1	1
Napa	0	0
Mendocino	1	0
Contra Costa	0	0
Tehama	1	1
Trinity	0	0
El Dorado	0	0
Amador	0	0
Sierra	0	0
Lake	0	0
Modoc	0	0
Sacramento	0	0
Mariposa	0	0
Yolo	0	0
Calaveras	0	0
Yuba	0	0
Glenn	7	5
Alpine	0	0
Stanislaus	0	0

	# of Displaced Households	# of People Needing Short Term Shelter
Sonoma	0	0
San Francisco	6	2
Merced	0	0
Placer	0	0
Mono	0	0
Marin	0	0
Lassen	0	0
Sutter	0	0
<b>Total</b>	<b>1,471</b>	<b>871</b>
<b>Region Total</b>	<b>1,471</b>	<b>871</b>

*Totals only reflect data for those census tracts/blocks included in the user's study region and will reflect the entire county/state only if all of the census blocks for that county/states were selected at the time of study region creation.*

-- Earthquake Planning Scenario --  
 ShakeMap for casc9.0\_expanded\_peak Scenario

Scenario Date: Jun 7, 2016 15:00:00 UTC M 9.0 N45.73 W125.12 Depth: 20.0km



-135° -130° -125° -120°  
 PLANNING SCENARIO ONLY -- Map Version 6 Processed 2016-11-18 21:45:39 UTC

PERCEIVED SHAKING	Not felt	Weak	Light	Moderate	Strong	Very strong	Severe	Violent	Extreme
POTENTIAL DAMAGE	none	none	none	Very light	Light	Moderate	Mod./Heavy	Heavy	Very Heavy
PEAK ACC.(%g)	<0.05	0.3	2.8	6.2	12	22	40	75	>139
PEAK VEL.(cm/s)	<0.02	0.1	1.4	4.7	9.6	20	41	86	>178
INSTRUMENTAL INTENSITY	I	II-III	IV	V	VI	VII	VIII	IX	X+

Scale based upon Worden et al. (2012)