

## Why SEMS ?

In order to respond to frequent and multiple disasters occurring anytime and anywhere in the state, it is important that emergency response agencies operate within a clear and consistent organizational structure.

Public agencies are increasingly required to manage the costs of emergencies more effectively with fewer resources.

Many different agencies must work together effectively to protect lives, property and the environment during disasters.

SEMS facilitates priority setting, interagency cooperation, and the efficient flow of resources and information.

## The System

The Standardized Emergency Management System (SEMS) utilizes the Incident Command System (ICS). ICS was originally developed by the fire service for managing emergency response to wildland fires.

SEMS incorporates:

*Incident Command System* - A field-level emergency response system based on management by objectives.

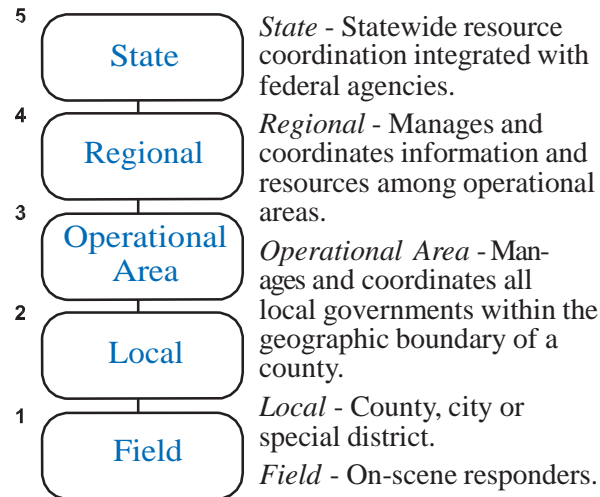
*Multi/inter-agency coordination* - Affected agencies working together to coordinate allocations of resources and emergency response activities.

*Mutual aid* - A system for obtaining additional emergency resources from non-affected jurisdictions.

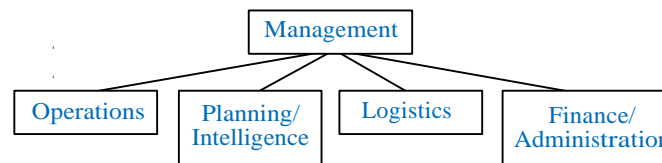
*Operational Area Concept* - County and its subdivisions to coordinate damage information, resource requests and emergency response.

## Organizational Levels & Functions

Five organizational levels:



Five functions:



*Management*- provides the overall direction and sets priorities for an emergency.

*Operations*- implements priorities established by management.

*Planning/Intelligence*- gathers and assesses information.

*Logistics*- obtains the resources to support the operations.

*Finance/Administration*- tracks all costs related to the operations.

## System Maintenance

Cal OES developed a SEMS Maintenance System to address the need for changes. The three-tiered system encompasses an Advisory Board, Technical Group, and Mutual Aid Regional Advisory Committees (MARACs).

Collectively, these multi-agency groups ensure changes are made to the system when necessary. They include representatives from all disciplines involved in emergency response.

## Compliance

All state government agencies must use SEMS when responding to multi-jurisdictional or multi-agency emergencies. All local government agencies must use SEMS in multi-jurisdictional or multi-agency emergency responses to be eligible for state reimbursement of response-related personnel costs.

Compliance regulations were completed in December 1995.

## Training

An Approved Course of Instruction (ACI) is available, consisting of four courses:

- *Introduction to SEMS*
- *Field Operations*
- *Emergency Operations Center Course*
- *Executive Course*

Each course contains modules that can be used either as a series or separately, depending on the training needs of the organization.

## Milestones

*October 1991* - Oakland Hills fire draws attention to the need for better coordination among the emergency services responders.

*January 1993* - Governor Wilson signs into law SB1841 (Petris) which is Government Code § 8607, requiring the development of a Standardized Emergency Management System (SEMS) by OES.

*February 1993* - SEMS Steering Committee is formed to direct development of SEMS regulations.

*March 1993* - SEMS Advisory Committee is formed representing agencies at all levels of government that will be using SEMS. Their task is to advise in regulation development.

*September 1994* - SEMS Regulations take effect after a series of public hearings.

*December 1994* - OES completes the coordinated development of the Approved Course of Instruction (ACI).

*December 1995* - Counties organized into Operational Areas (OAs).

*December 1, 1996* - All state and local government agencies must use SEMS when responding to multi-jurisdictional or multi-agency emergencies.

*December 1, 1996* - All local government agencies must use SEMS in multi-jurisdictional or multi-agency emergency responses to be eligible for state reimbursement of personnel response-related costs.

*September 2005* - California initiates the integration of SEMS with the National Incident Management System (NIMS).

*For more information on SEMS please contact any of the following offices of the Governor's Office of Emergency Services, Cal OES:*

### **Headquarters**

Preparedness and Training  
3650 Schriever Avenue  
Mather, CA 95655  
(916) 845-8787

### **Coastal Region**

1340 Treat Blvd, Suite 270  
Walnut Creek, CA  
94597  
(925) 953-1402

### **Inland Region**

630 Sequoia Pacific Blvd.  
Sacramento, CA  
95811  
(916) 657-9210

### **Southern Region**

4671 Liberty Ave, Bldg. 283  
Los Alamitos, CA 90720-5002  
(562) 795-2900

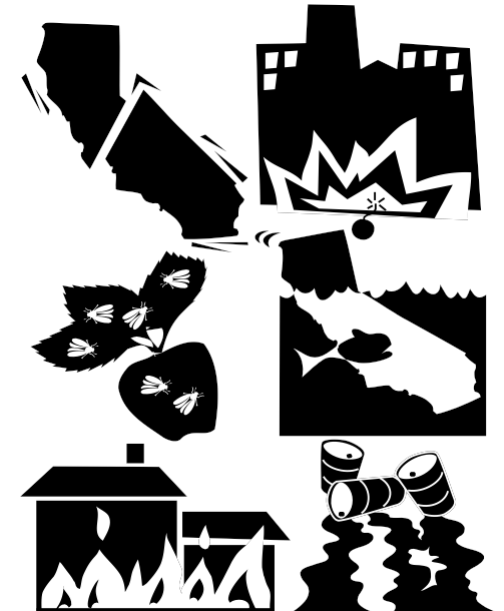
*For SEMS training contact:*

### **California Specialized Training Institute**

Camp San Luis Obispo  
10 Sonoma Ave, Bldg. 904  
San Luis Obispo, CA 93405-7605  
(805) 549-3599

# SEMS

## Standardized Emergency Management System



## Cal OES

GOVERNOR'S OFFICE  
OF EMERGENCY SERVICES